

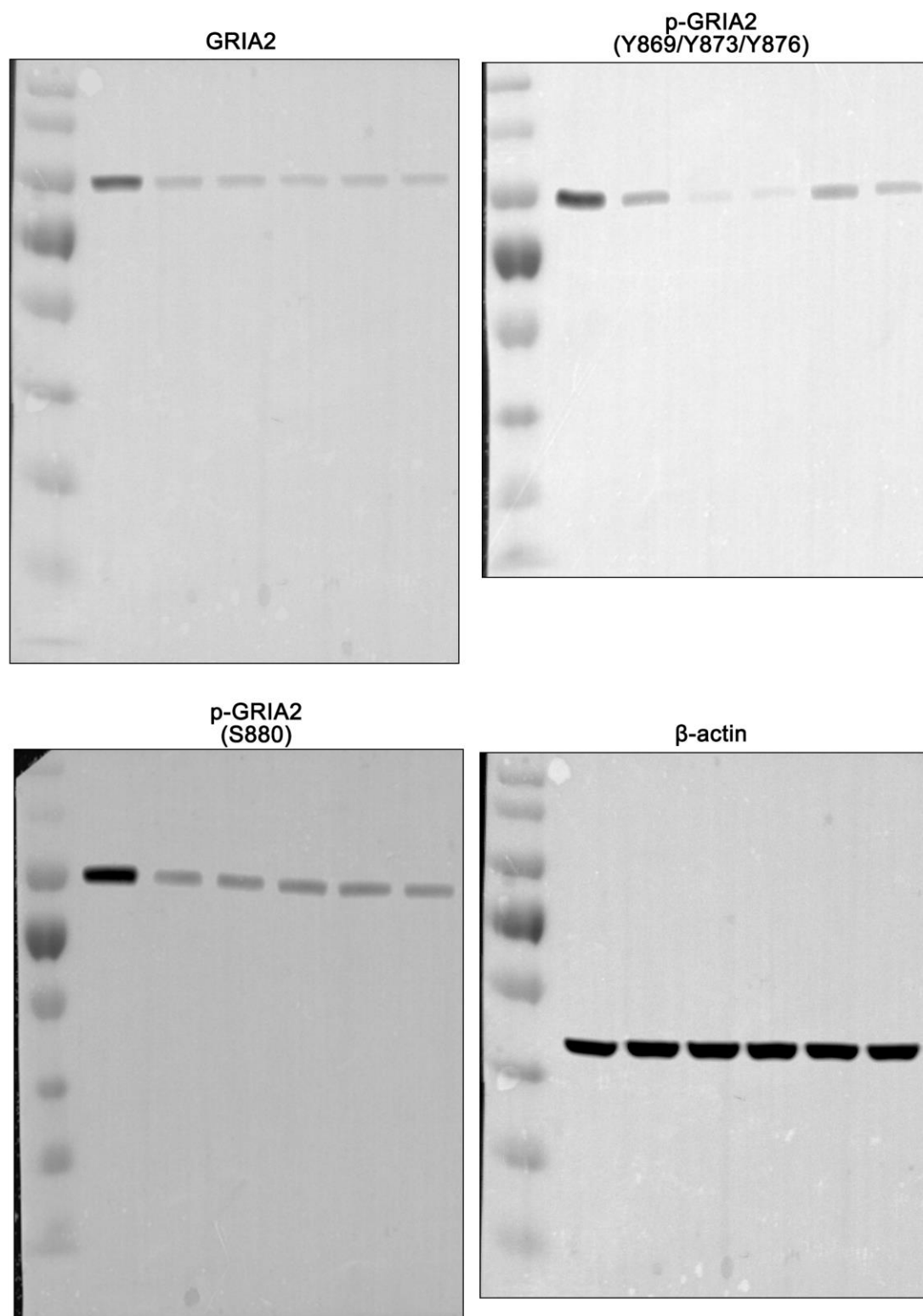
Supplementary information

Inhibition of AKT/GSK3 β /CREB pathway improves the responsiveness to AMPA receptor antagonists by regulating GRIA1 surface expression in chronic epilepsy rats

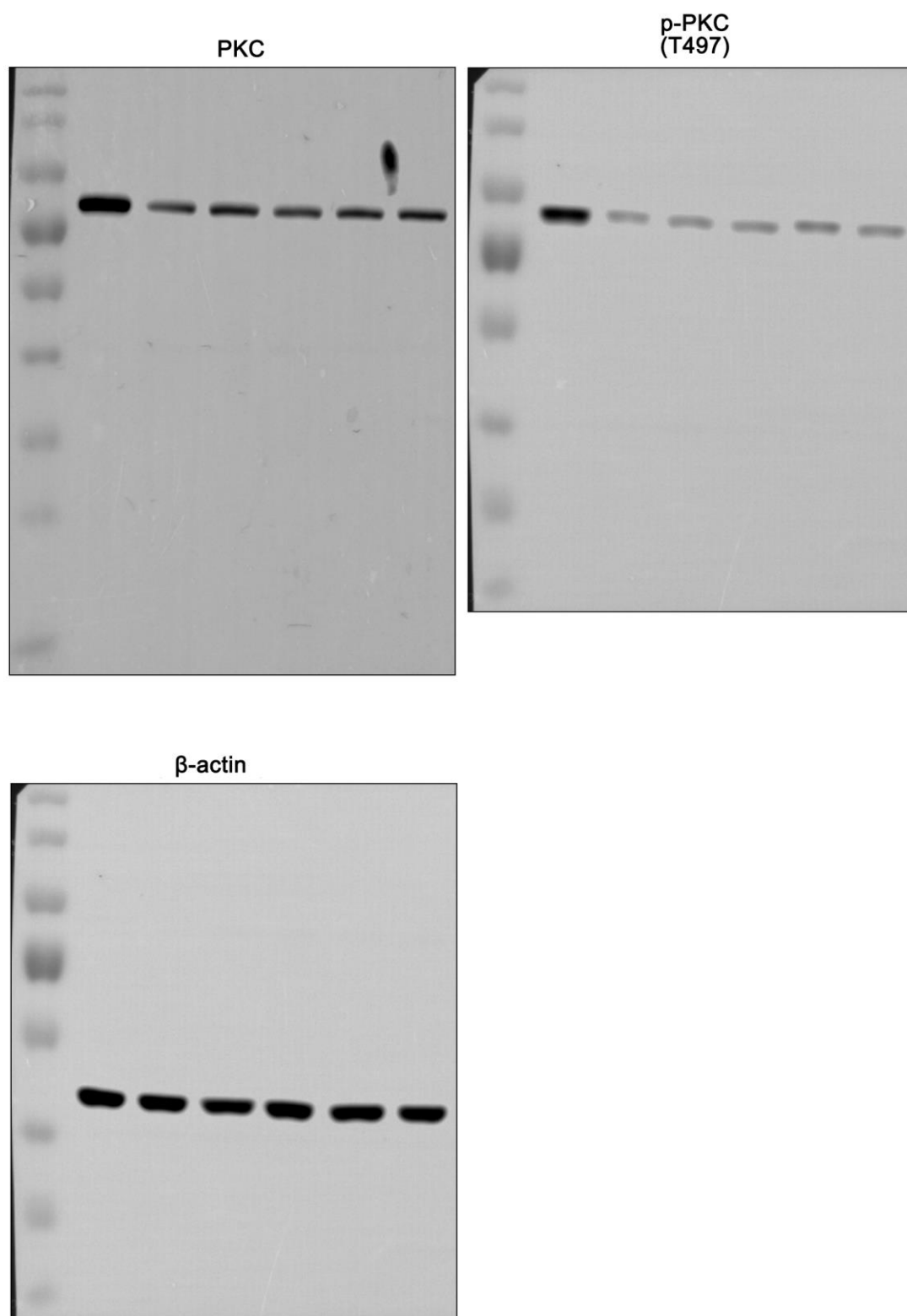
Ji-Eun Kim, Duk-Shin Lee, Hana Park, Tae-Hyun Kim, Tae-Cheon Kang*

Department of Anatomy and Neurobiology and Institute of Epilepsy Research, College of Medicine, Hallym University, Chuncheon 24252, Korea

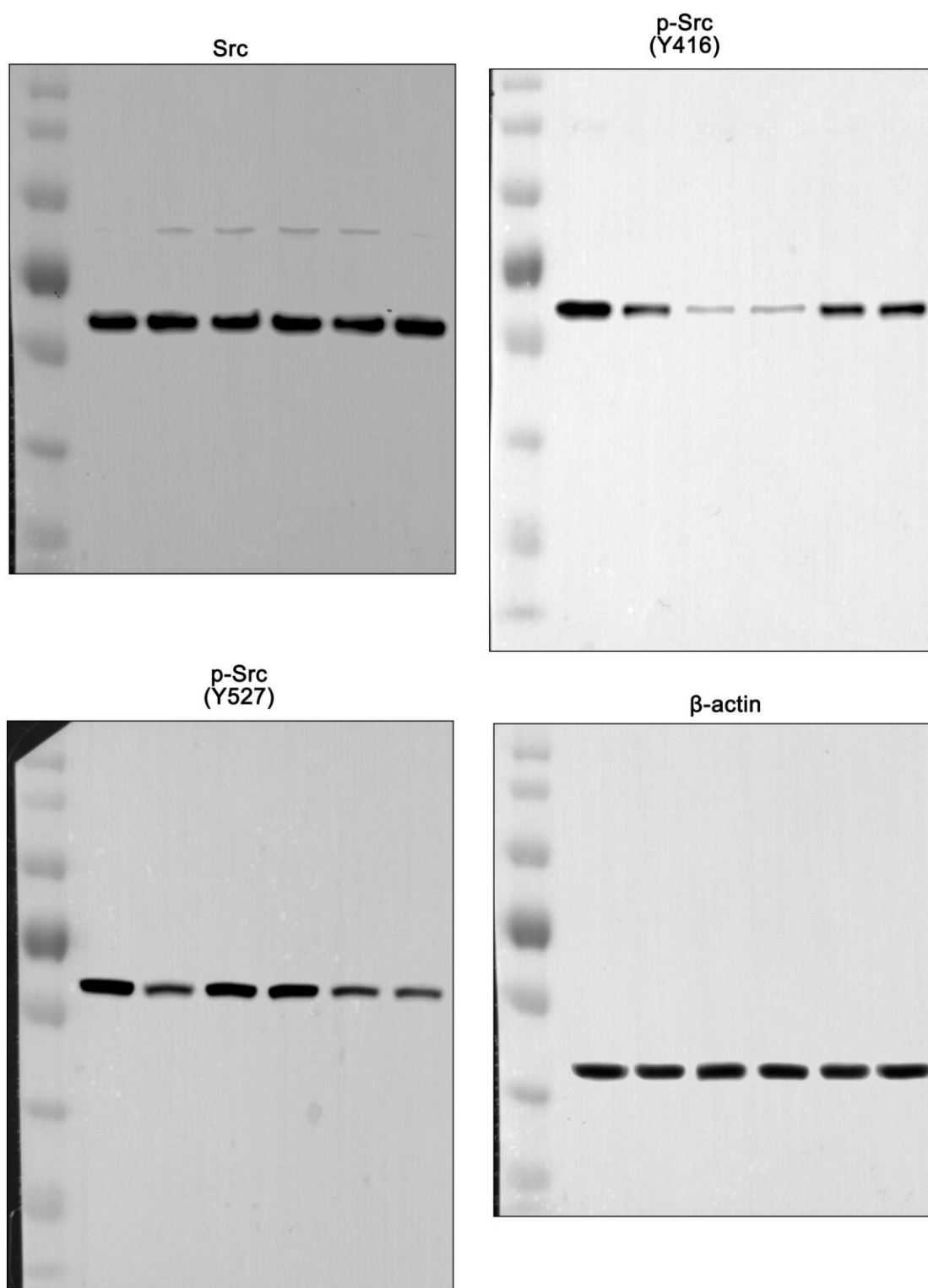
* Correspondence: Department of Anatomy and Neurobiology and Institute of Epilepsy Research, College of Medicine, Hallym University, Chuncheon 24252, Korea. E-mail: tckang@hallym.ac.kr; Tel.: +82-33-248-2524; Fax: +82-33-248-2525.



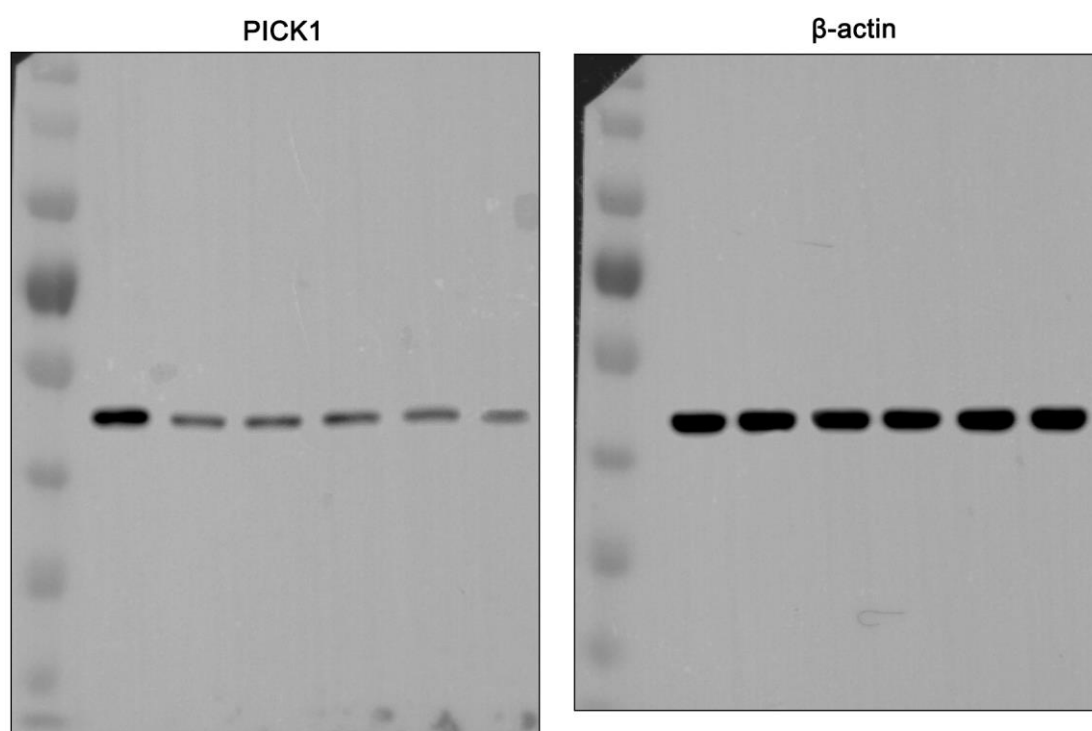
Supplementary Figure 1. Representative full-gel images of Western blots in Figure 3A.



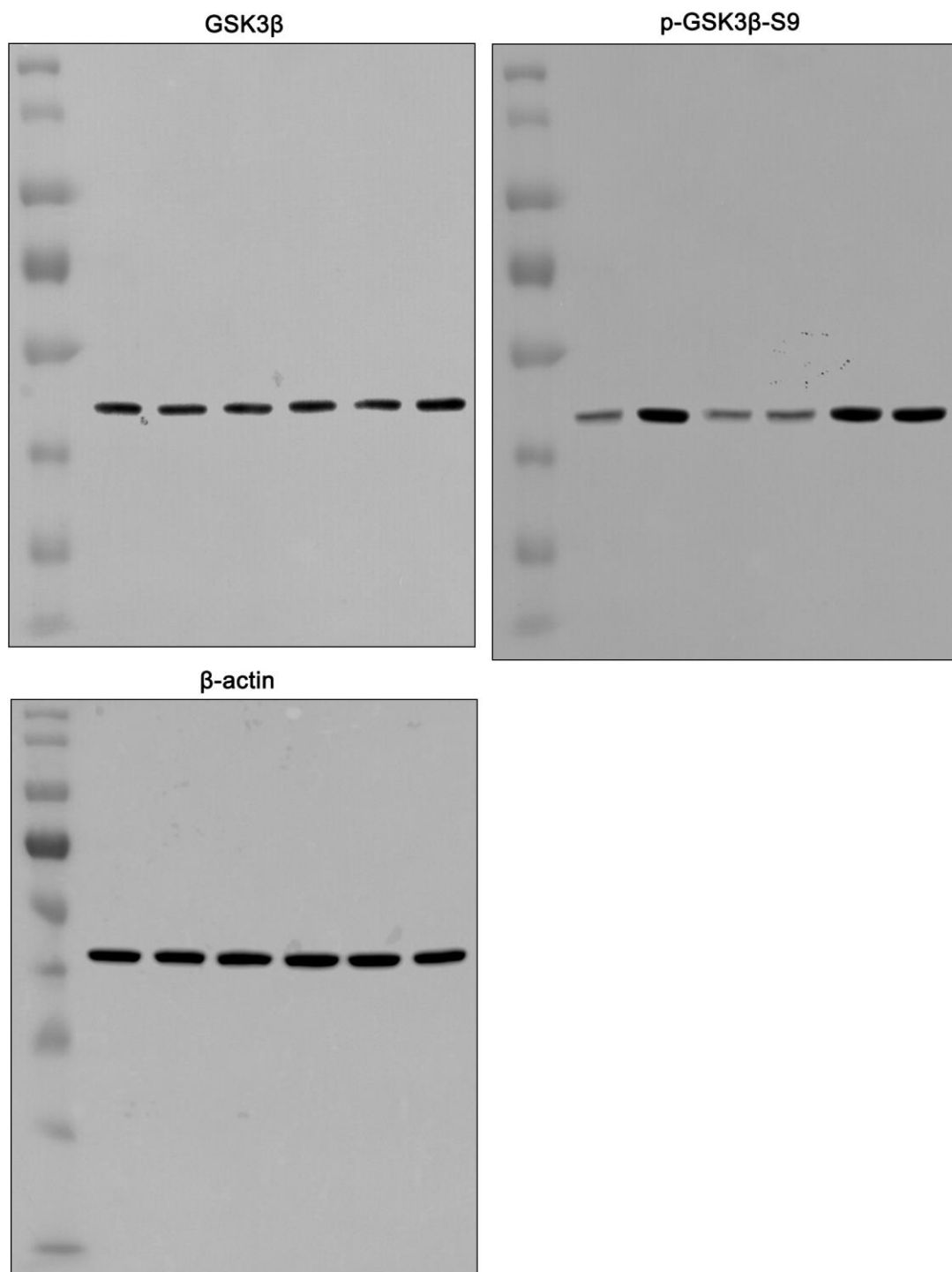
Supplementary Figure 2. Representative full-gel images of Western blots in Figure 4A.



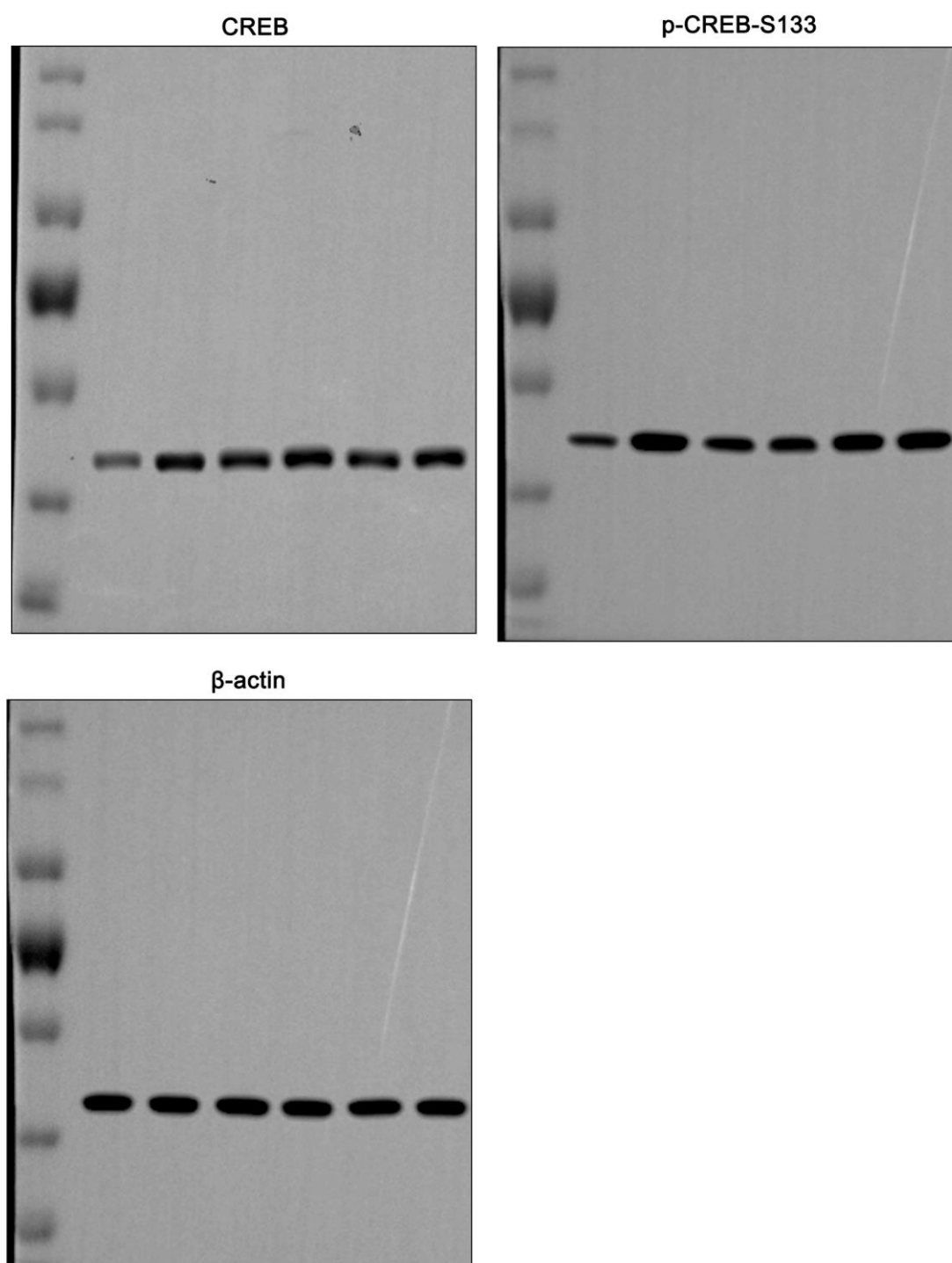
Supplementary Figure 3. Representative full-gel images of Western blots in Figure 5A.



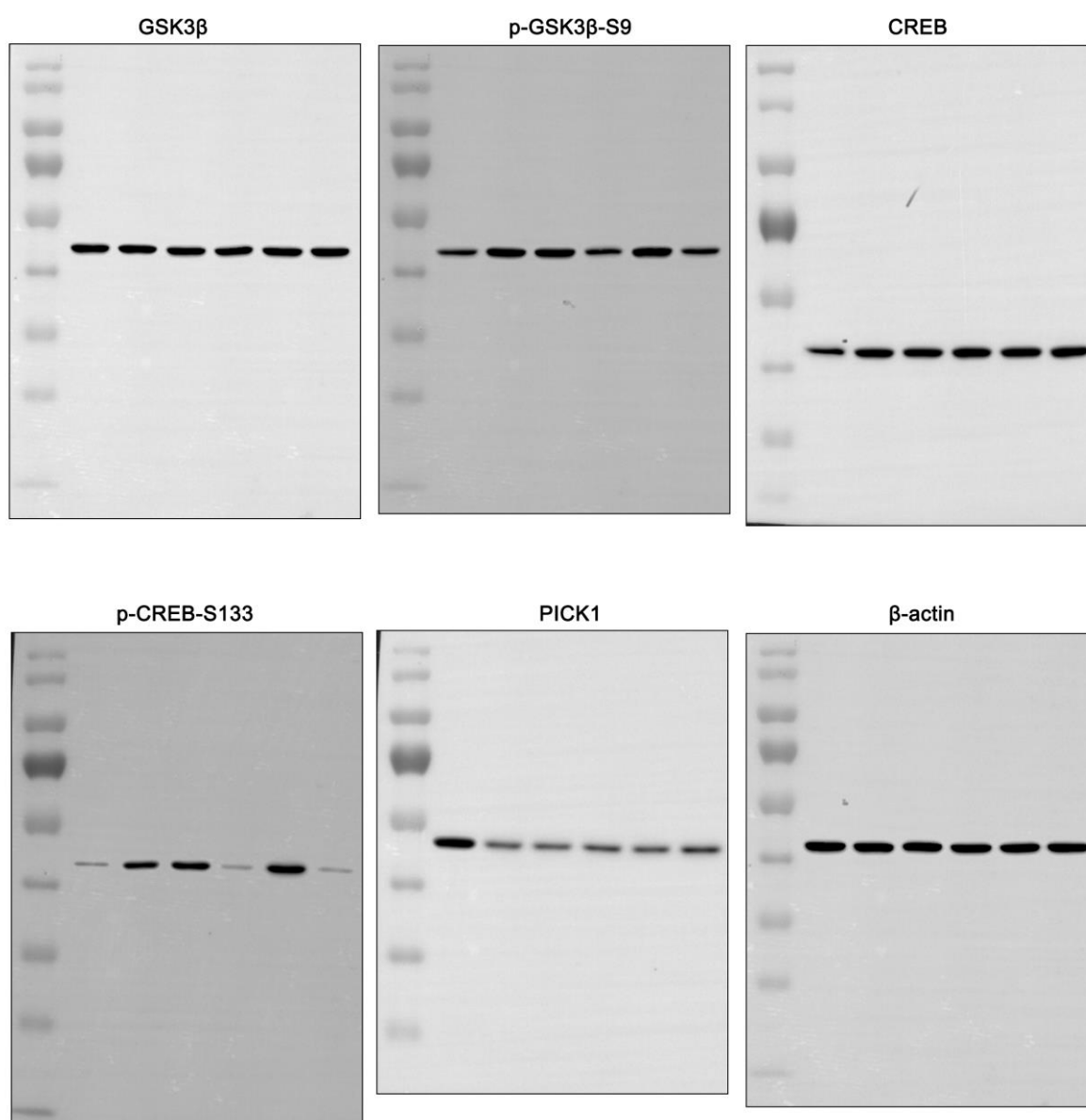
Supplementary Figure 4. Representative full-gel images of Western blots in Figure 6A.



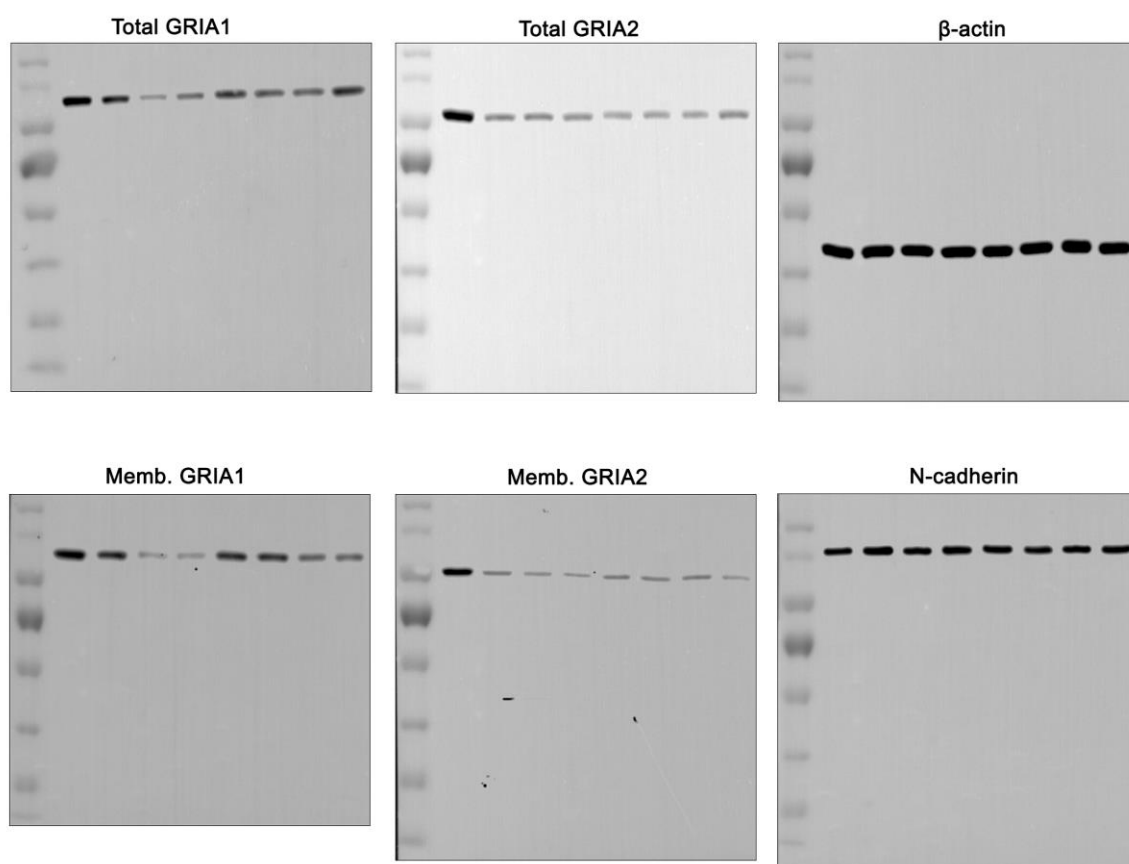
Supplementary Figure 5. Representative full-gel images of Western blots in Figure 6B.



Supplementary Figure 6. Representative full-gel images of Western blots in Figure 7A.



Supplementary Figure 7. Representative full-gel images of Western blots in Figure 9A.



Supplementary Figure 8. Representative full-gel images of Western blots in Figure 10A.