

Supplementary information

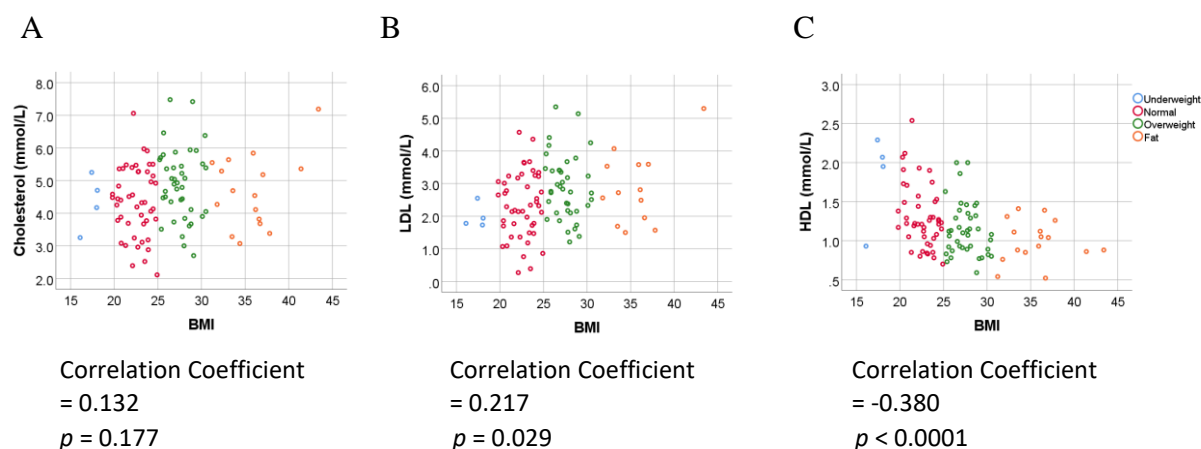


Figure. S1. Correlations between body mass index (BMI) and lipoprotein levels. (A) Correlation between BMI and total cholesterol. (B) Correlation between BMI and low-density lipoprotein (LDL). (C) Correlation between BMI and high-density lipoprotein (HDL). Correlation coefficient and p -values are shown under the scatter plots.

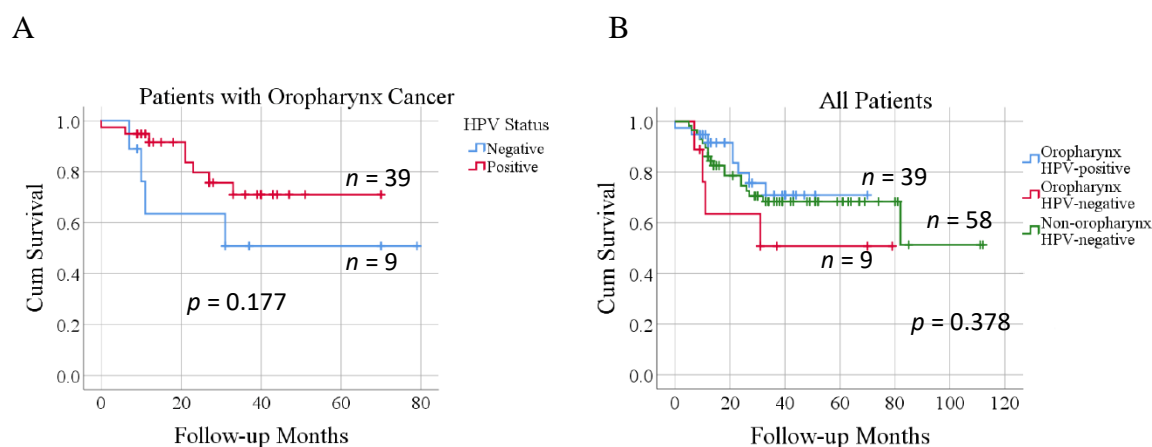


Figure. S2. Kaplan–Meier curves showing the impact of HPV status on overall survival. (A) Overall survival status between patients with HPV-negative and HPV-positive oropharynx cancer. (B) Overall survival status among patients with HPV-positive oropharynx, HPV-negative oropharynx or HPV-negative non-oropharynx cancers.