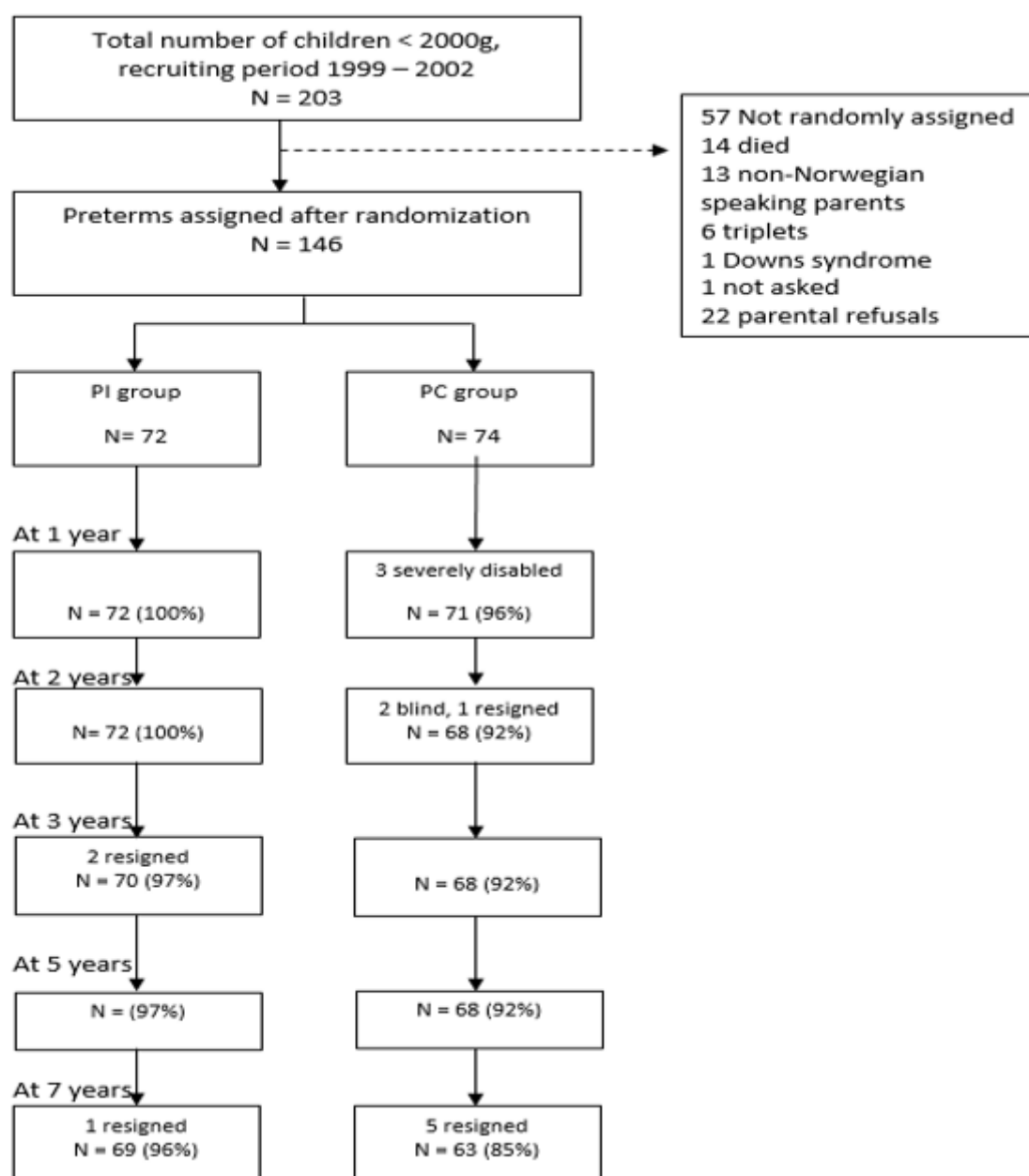


# Supplementary Materials:



**Figure S1.** Tromsø Intervention Study on Preterms (TISP). Flow of participants in the two groups with preterm born infants from recruitment until age seven.

**Table S1.** Fixed effects of time and group-belonging on mothers reports on five temperament dimensions.

	Shyness	Sociality	Emotionality	Activity	Soothability
Time	F(1,115) < 0.1 ns.	F(1,116) = 2.2 ns.	F(1,111) = 5.1 *	F(1,116) = 60.9 ***	F(1,115) = 2.7 ns.
Group	F(1,124) < 0.1 ns.	F(1,119) = 0.6 ns.	F(1,121) = 9.7 **	F(1,120) = 1.8 ns	F(1,120) = 3.7 ns. [2]
Time x group	F(1,115) = 0.4 ns.	F(1,116) = 0.1 ns.	F(1,111) = 1.8 ns.	F(1,116) = 3.6 ns [3]	F(1,115) = 0.5 ns.
Tot. Stress [1]	F(1,125) = 9.2 **	F(1,122) = 7.8 **	F(1,126) = 8.3 **	F(1,128) = 6.3 *	F(1,128) = 25.2 ***
Years educ.	F(1,123) = 1.6 ns.	F(1,119) = 0.4 ns.	F(1,122) = 1.2 ns.	F(1,116) = 0.1 ns.	F(1,121) = 1.1 ns.

ns.  $p > 0.05$ , \*  $p < 0.05$ , \*\*  $p < 0.01$ , \*\*\*  $p < 0.001$ , non-significant results toned down. [1]: PSI, total stress reported by mothers at children's age of 1 year [2]:  $p = 0.056$  [3]:  $p = 0.06$ .

**Table S2.** Fixed effects of time and group-belonging on fathers reports on five temperament dimensions.

	<b>Shyness</b>	<b>Sociality</b>	<b>Emotionality</b>	<b>Activity</b>	<b>Soothability</b>
Time	$F(1,93) < 0.1$ ns.	$F(1,93) < 0.1$ ns.	$F(1,94) = 1.3$ ns.	$F(1,91) = 61.7$ ***	$F(1,95) = 0.3$ ns.
Group	$F(1,100) = 0.2$ ns.	$F(1,102) = 0.5$ ns.	$F(1,98) = 0.6$ ns.	$F(1,98) = 0.7$ ns.	$F(1,100) = 14.2$ ***
Time x Group	$F(1,94) = 0.4$ ns.	$F(1,93) < 0.1$ ns.	$F(1,94) = 4.8$ *	$F(1,91) = 0.3$ ns.	$F(1,95) = 1.7$ ns.
Total stress [1]	$F(1,99) = 7.5$ **	$F(1,99) = 27.1$ ***	$F(1,99) = 9.5$ **	$F(1,98) = 1.9$ ns.	$F(1,98) = 3.8$ ns.
Years educ.	$F(1,100) < 0.1$ ns.	$F(1,98) < 0.1$ ns.	$F(1,101) = 4.7$ *	$F(1,99) = 0.7$ ns.	$F(1,98) = 0.2$ ns.

ns.  $p > 0.05$ , \*  $p < 0.05$ , \*\*  $p < 0.01$ , \*\*\*  $p < 0.001$ , non-significant results toned down. [1]: PSI, total stress reported by fathers at children's age of 1 year.