

In Vitro Cytotoxicity and Spectral Analysis-Based Phytochemical Profiling of Methanol Extract of *Barleria hochstetteri*, and Molecular Mechanisms Underlying Its Apoptosis-Inducing Effect on Breast and Lung Cancer Cell Lines

Chromatogram showing detector response (Y-axis, 0 to 2,429,338) versus time (X-axis, 7.0 to 49.0 min). The chromatogram displays several peaks, with the following retention times labeled:

- 17.181
- 22.432
- 28.406
- 31.759
- 31.983
- 32.192
- 43.234
- 44.960
- 46.883

The label "TIC*1.00" is present near the end of the chromatogram.

www.mdpi.com/journal/separations

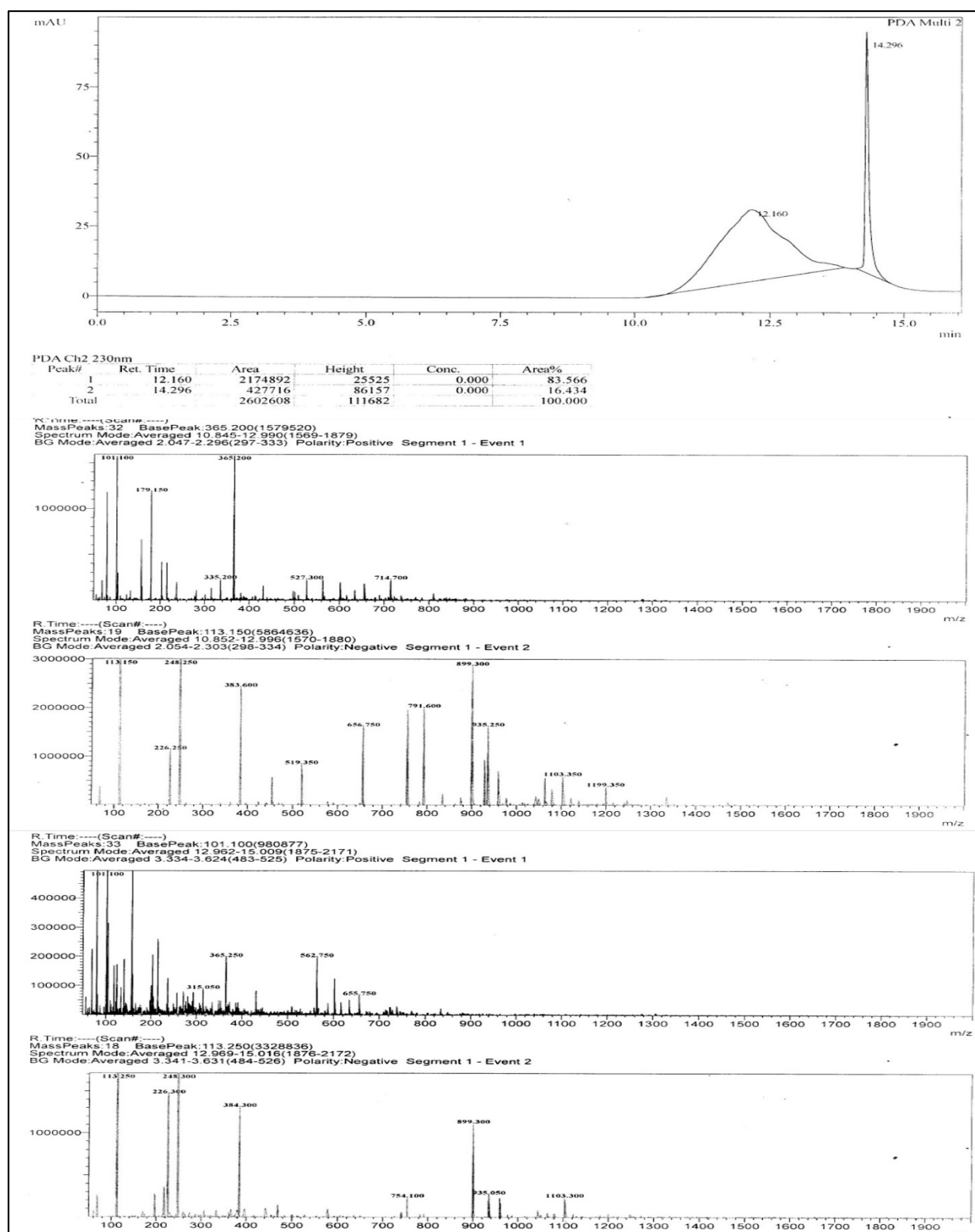


Figure S2. LC-MS analysis peaks of Methanol extract of *B. hochstetteri*.

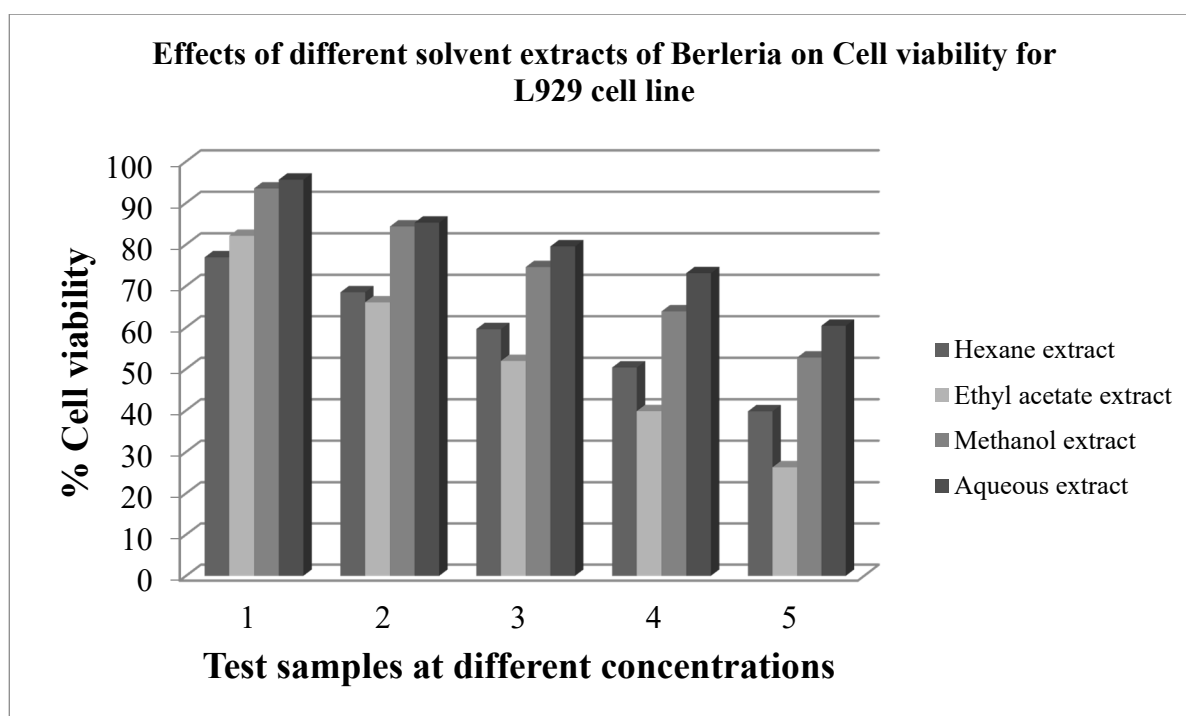


Figure S3. Cytotoxicity of different solvent extracts of *B. hochstetteri* against non-cancerous transformed fibroblast L929 cell line.

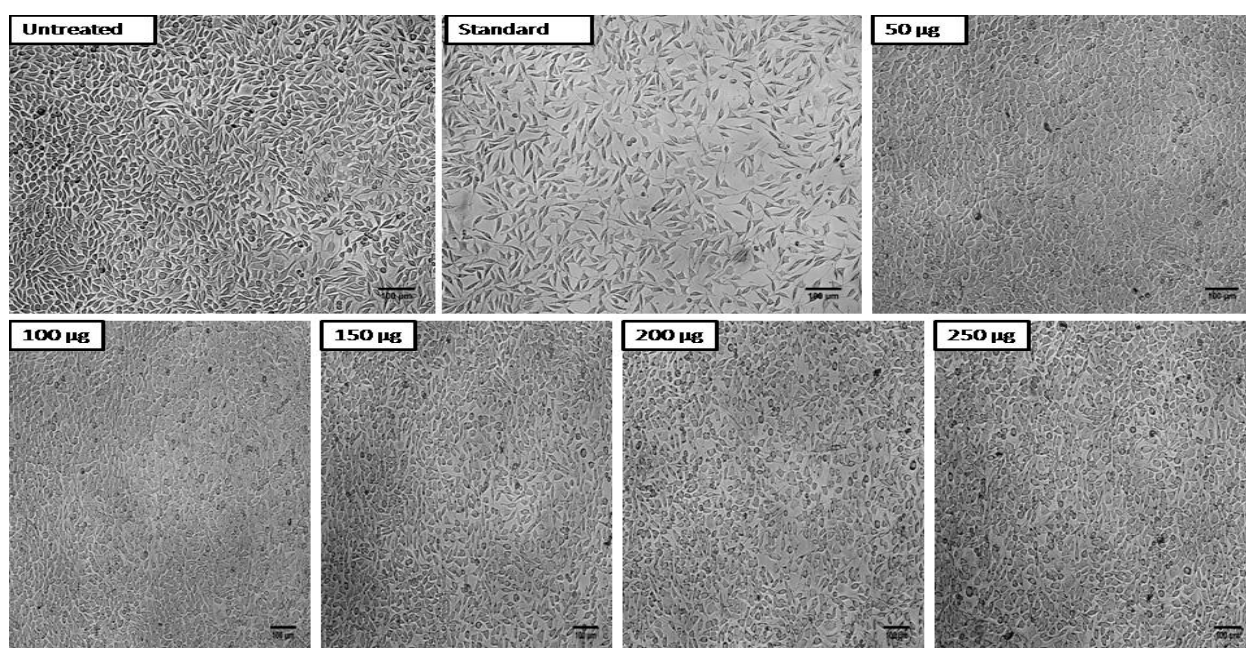


Figure S4. Morphological effects of Hexane extract of *B. hochstetteri* on non-cancerous transformed fibroblast L929 cell line.

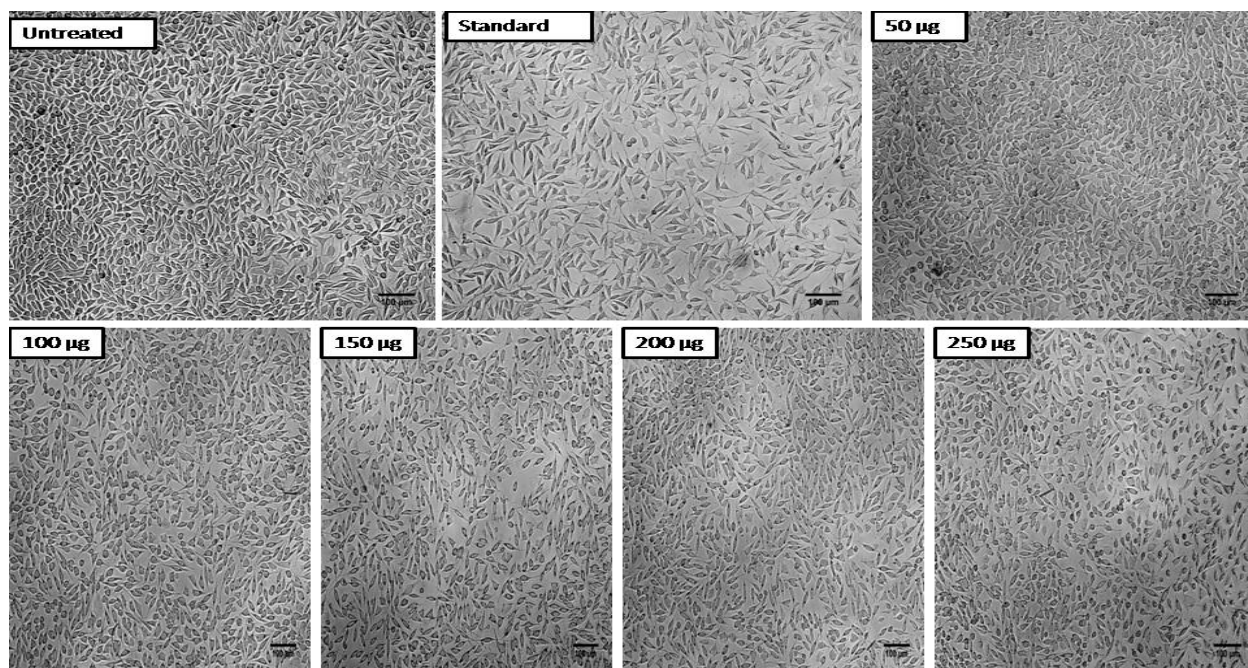


Figure S5. Morphological effects of Ethyl acetate extract of *B. hochstetteri* on non-cancerous transformed fibroblast L929 cell line.

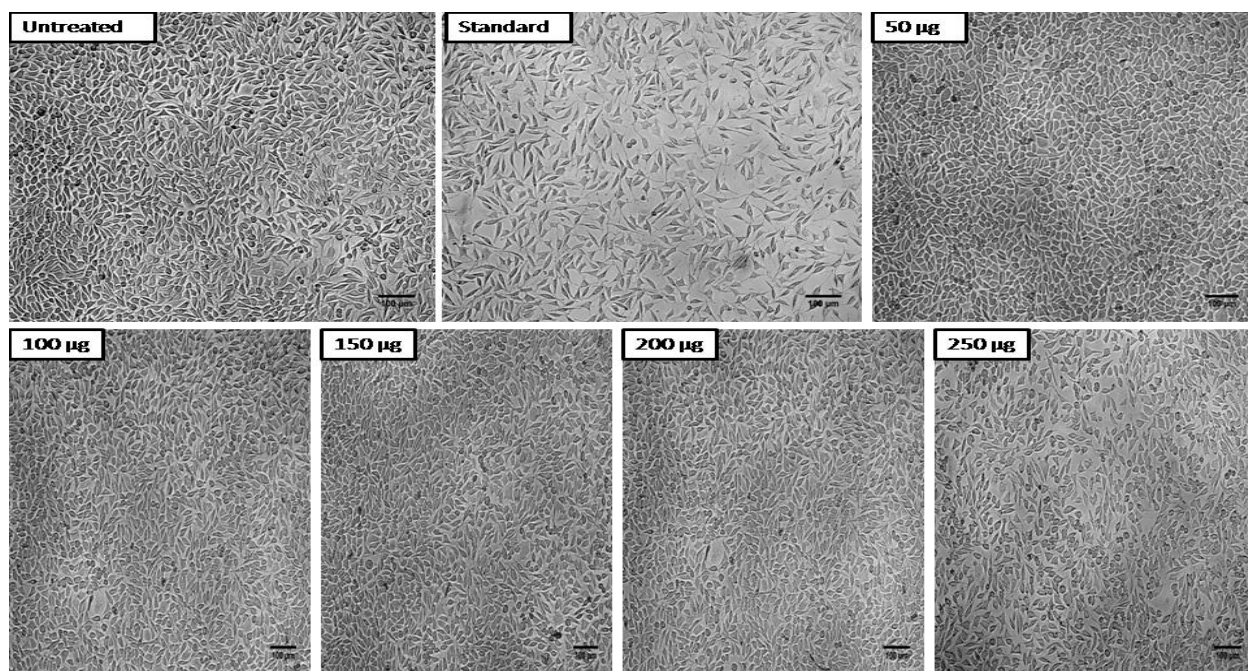


Figure S6. Morphological effects of Methanol extract of *B. hochstetteri* on non-cancerous transformed fibroblast L929 cell line.

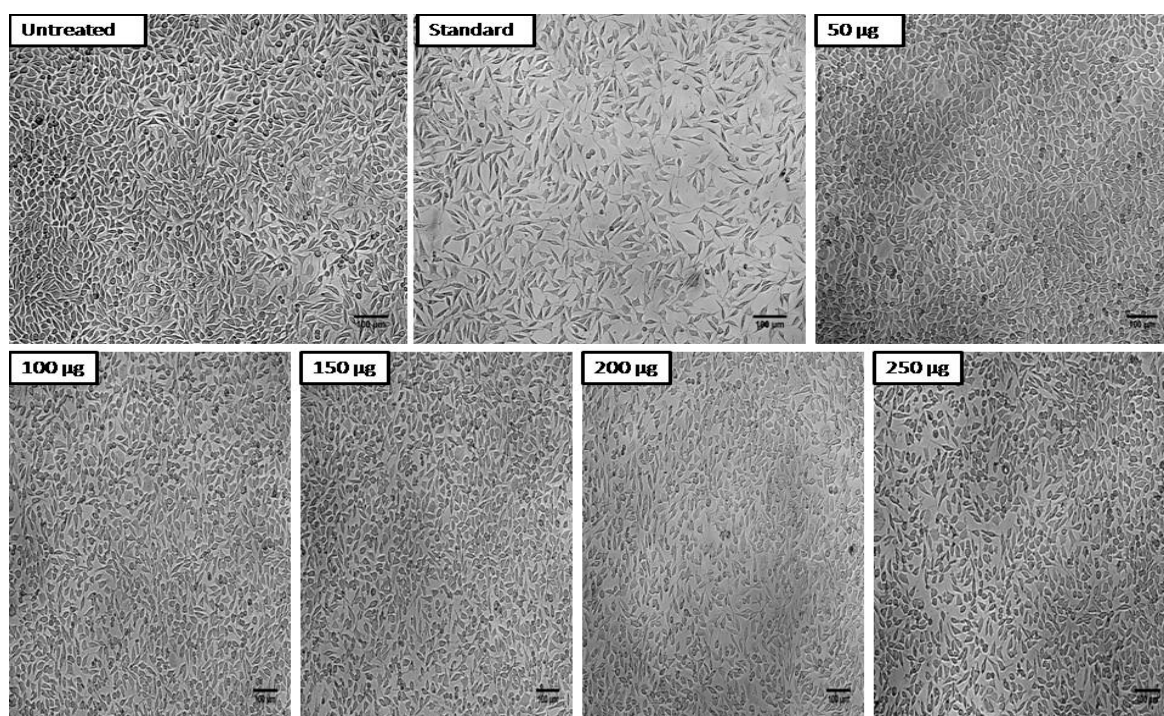


Figure S7. Morphological effects of aqueous extract of *B. hochstetteri* on non-cancerous transformed fibroblast L929 cell line.

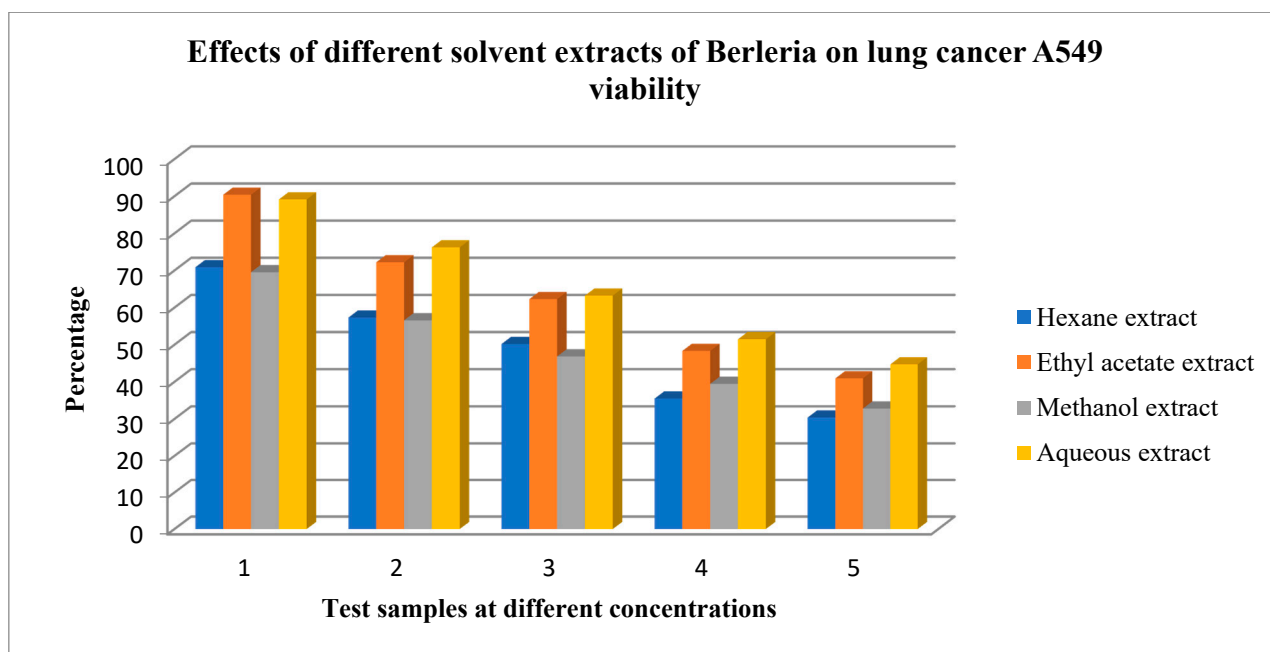


Figure S8. Cytotoxic activity of different solvent extracts of *B. hochstetteri* against Lung cancer A549 cell line.

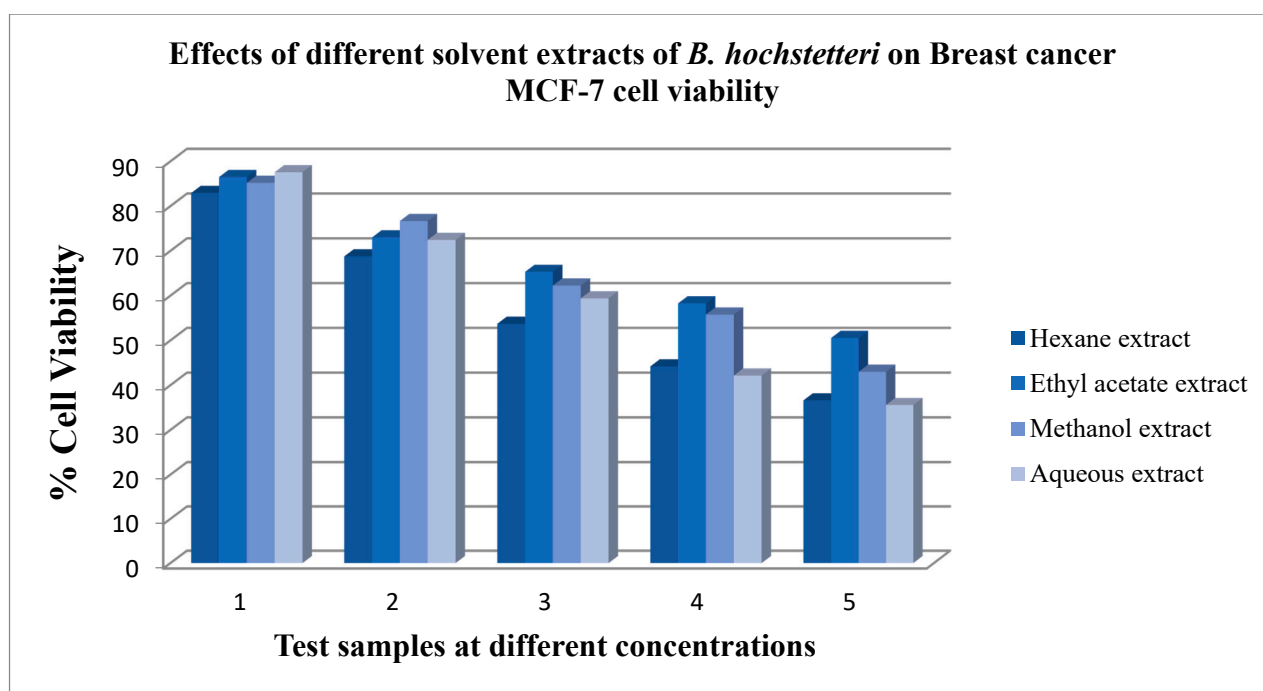


Figure S9. Cytotoxic activity of different solvent extracts of *B. hochstetteri* against Breast cancer MCF-7 cell line.

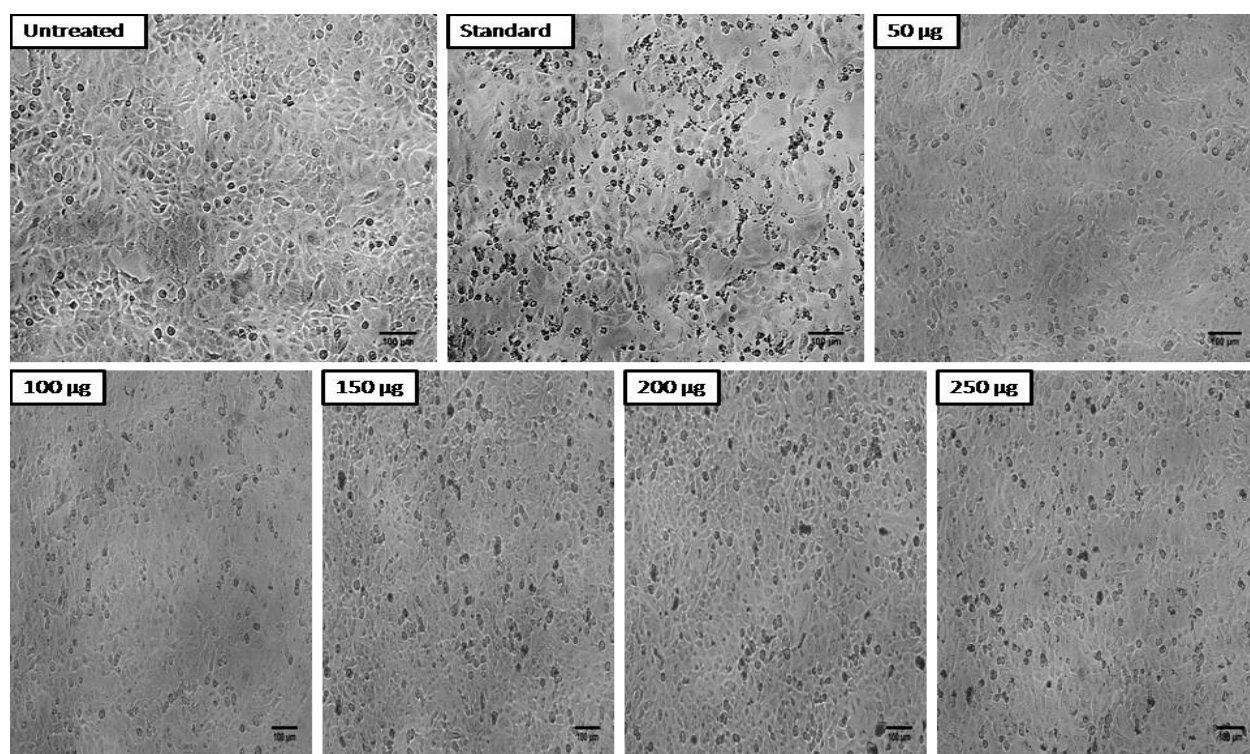


Figure S10. Morphological effects of Hexane extract of *B. hochstetteri* on Lung cancer A549 cell line.

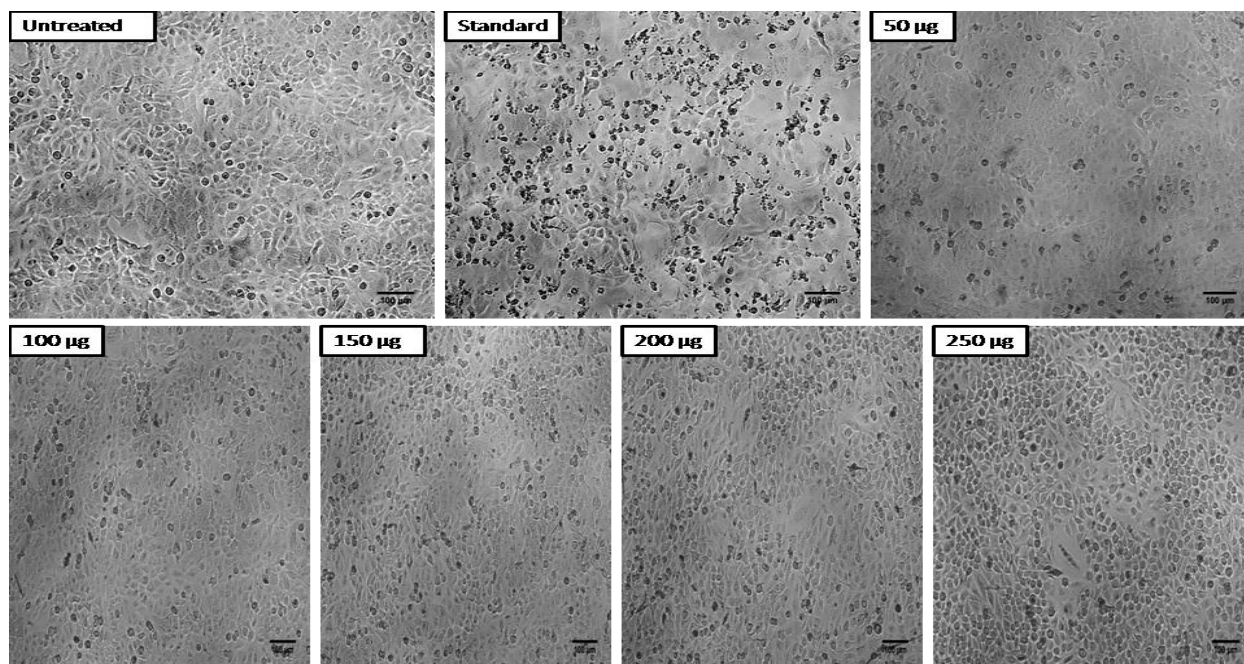


Figure S11. Morphological effects of Ethyl acetate extract of *B. hochstetteri* on Lung cancer A549 cell line.

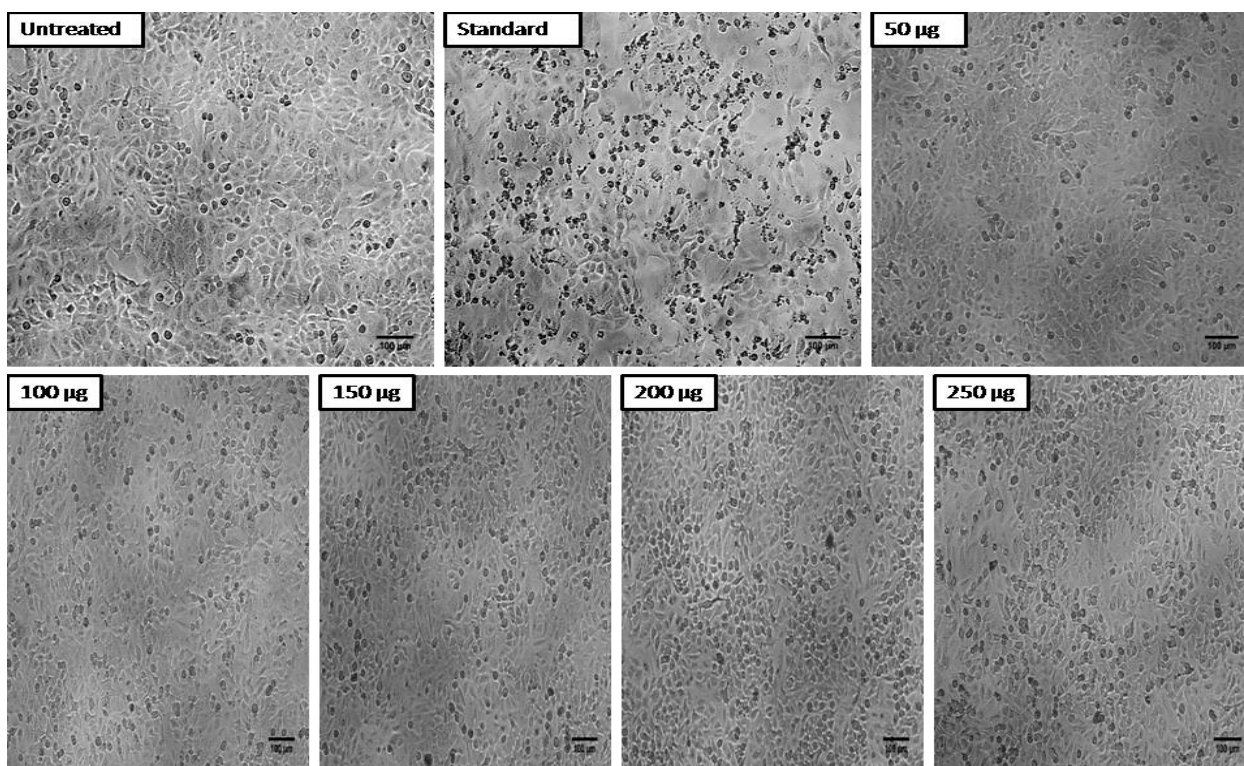


Figure S12. Morphological effects of Methanol extract of *B. hochstetteri* on Lung cancer A549 cell line.

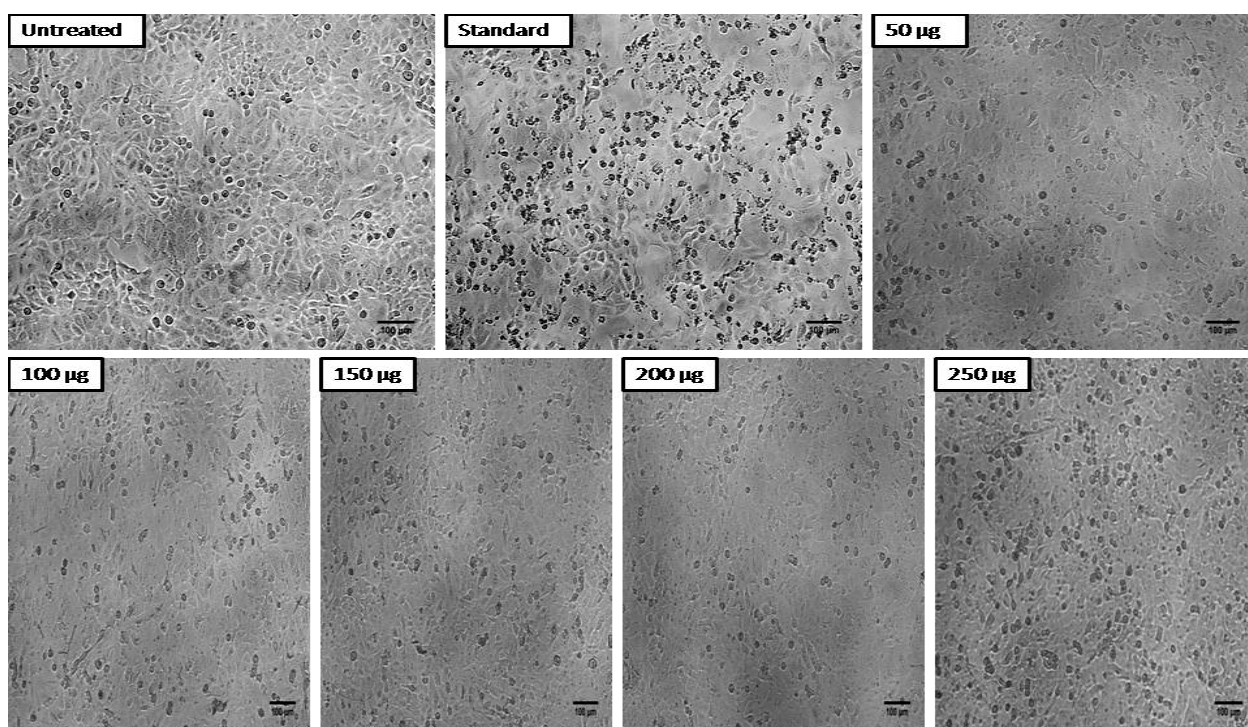


Figure S13. Morphological effects of Aqueous extract of *B. hochstetteri* on Lung cancer A549 cell line.

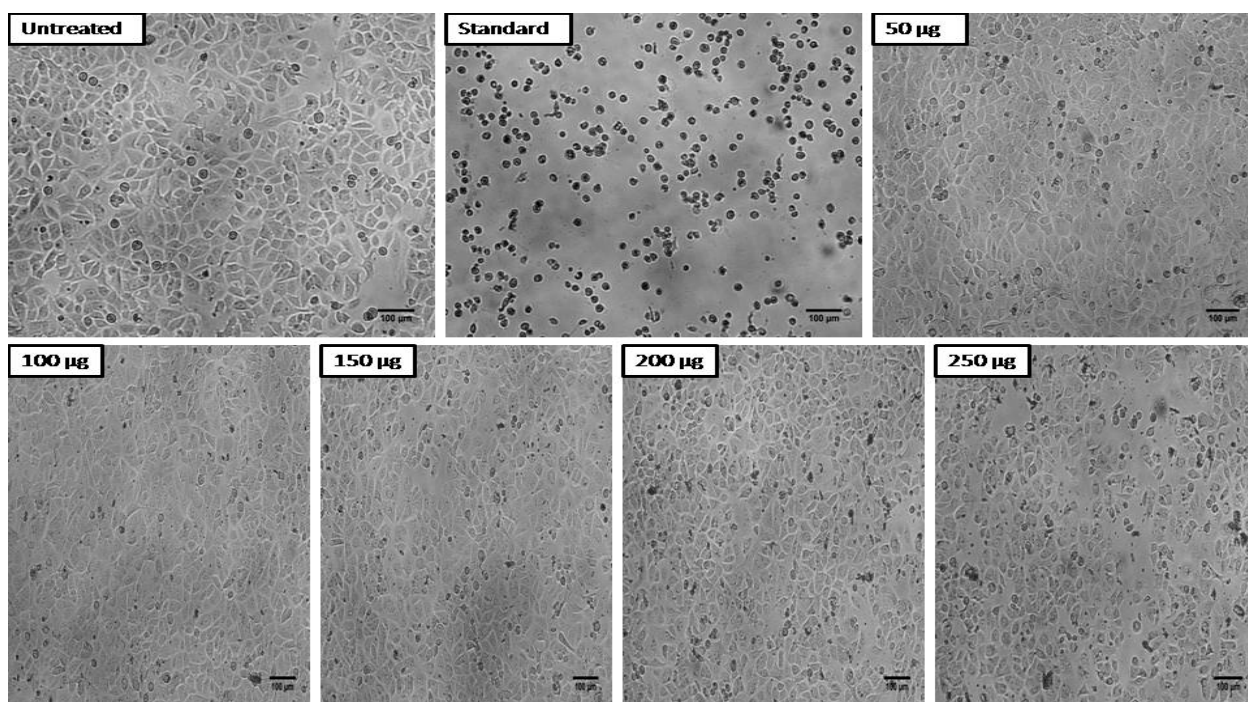


Figure S14. Morphological effects of Hexane extract of *B. hochstetteri* on Breast cancer MCF-7 cell line.

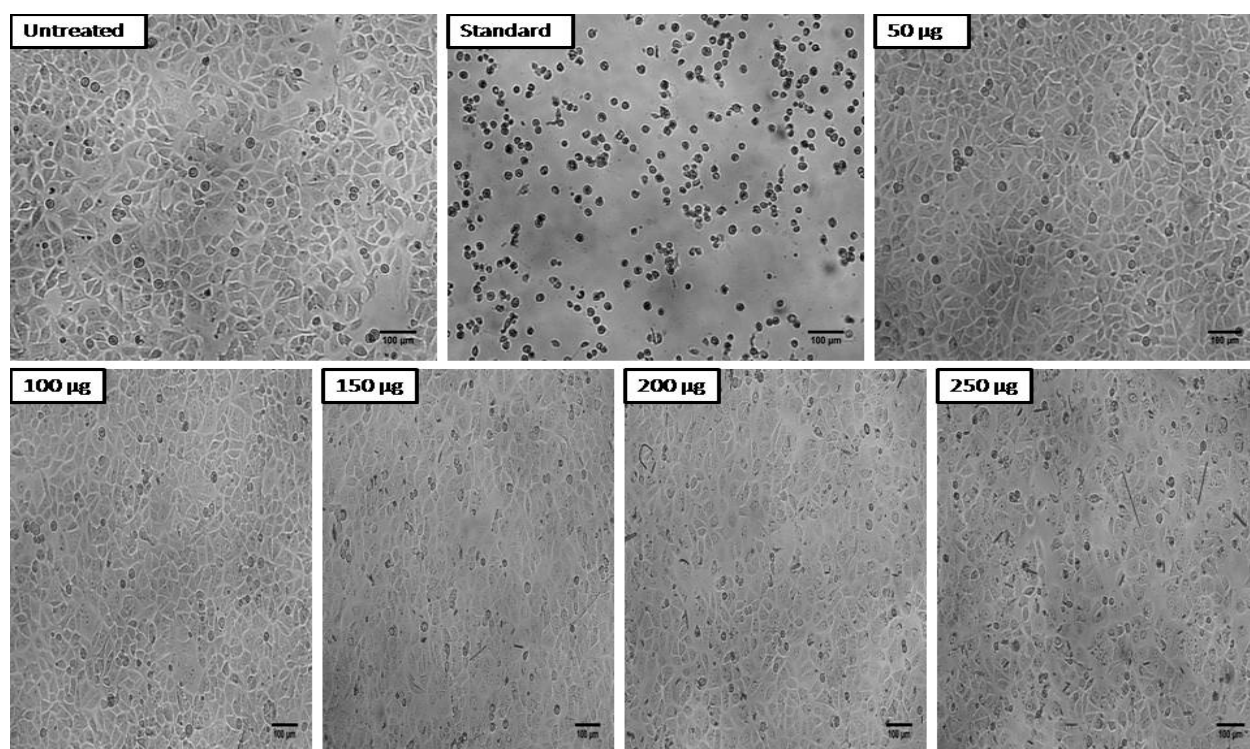


Figure S15. Morphological effects of Ethyl acetate extract of *B. hochstetteri* on Breast cancer MCF-7 cell line.

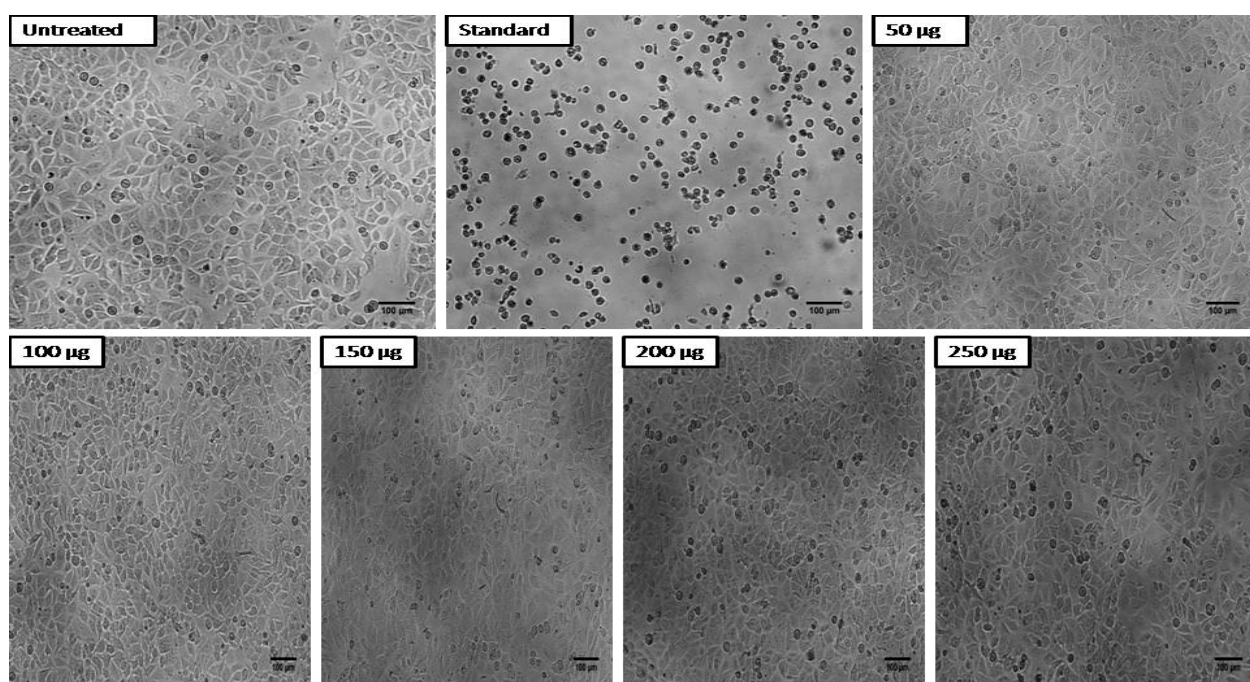


Figure S16. Morphological effects of Methanol extract of *B. hochstetteri* on Breast cancer MCF-7 cell line.

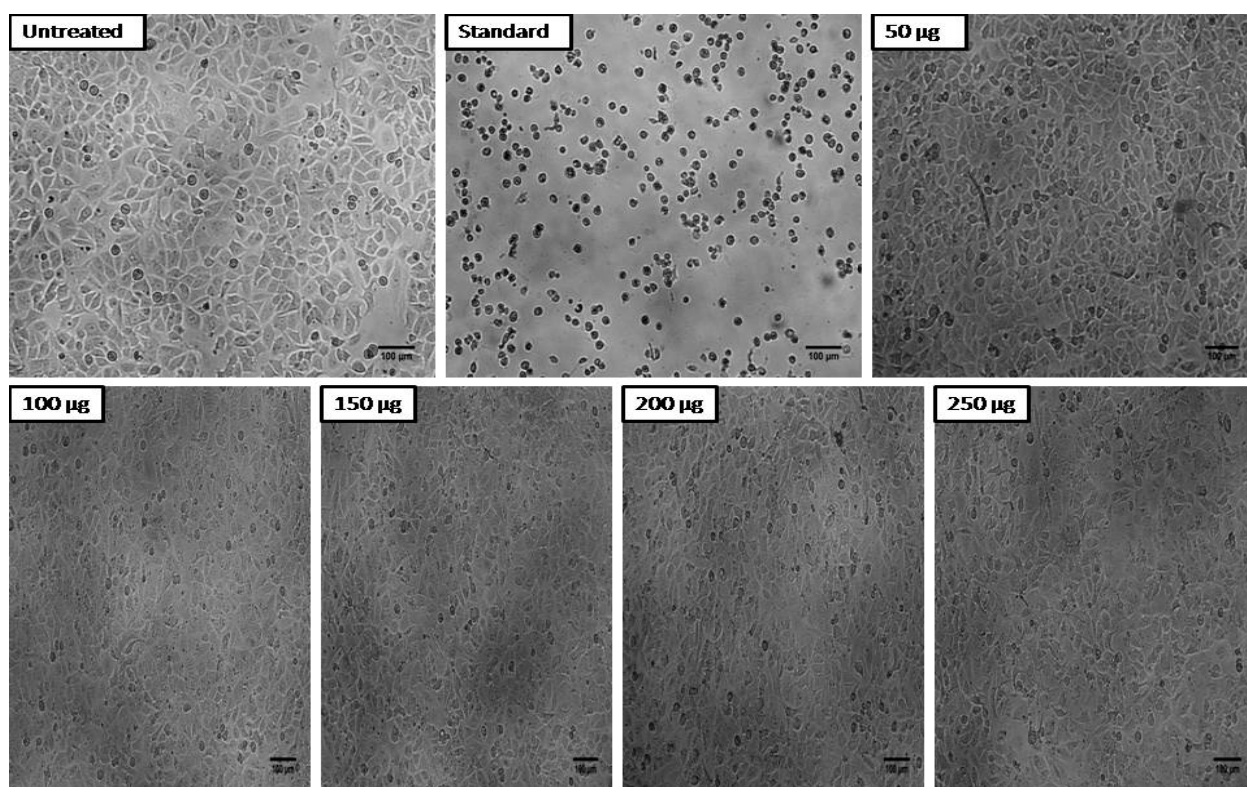


Figure S17. Morphological effects of Aqueous extract of *B. hochstetteri* on Breast cancer MCF-7 cell line.