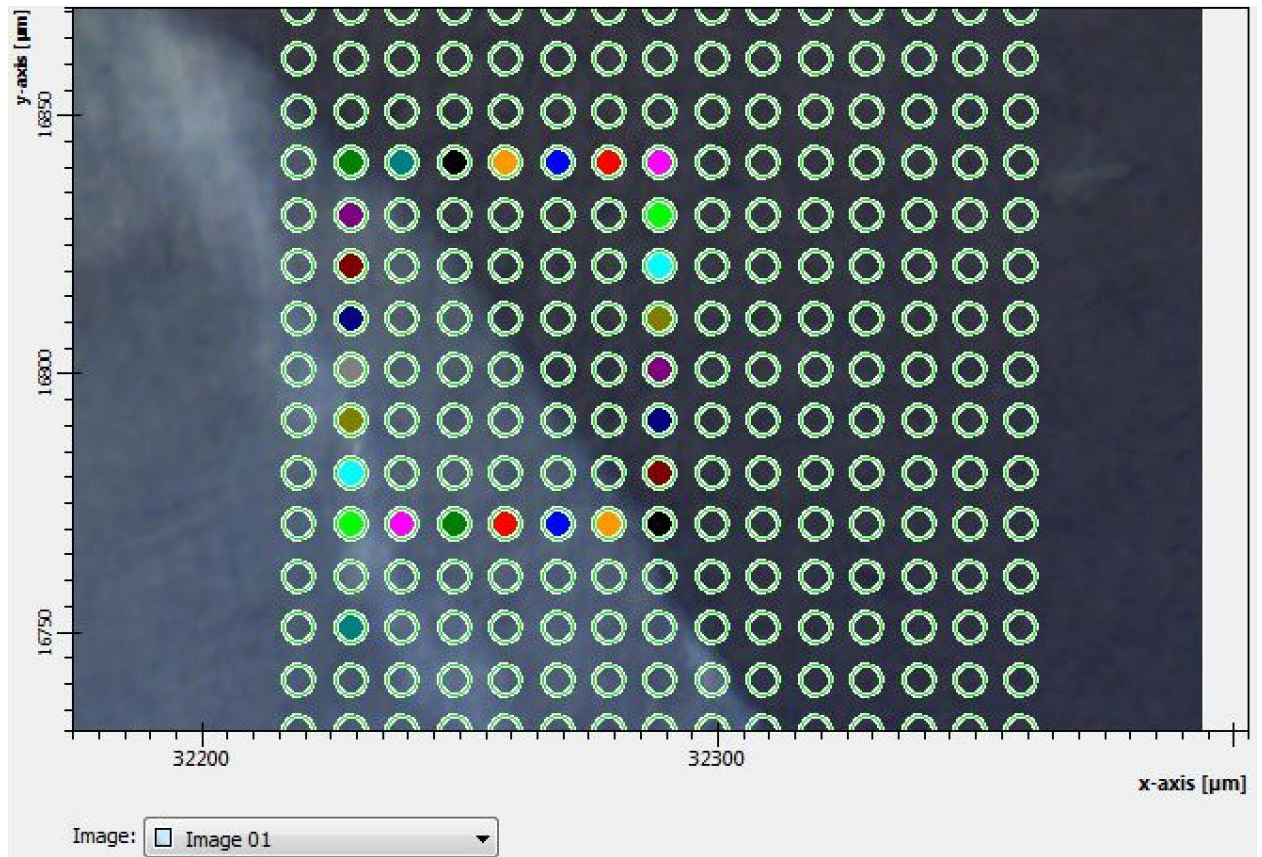
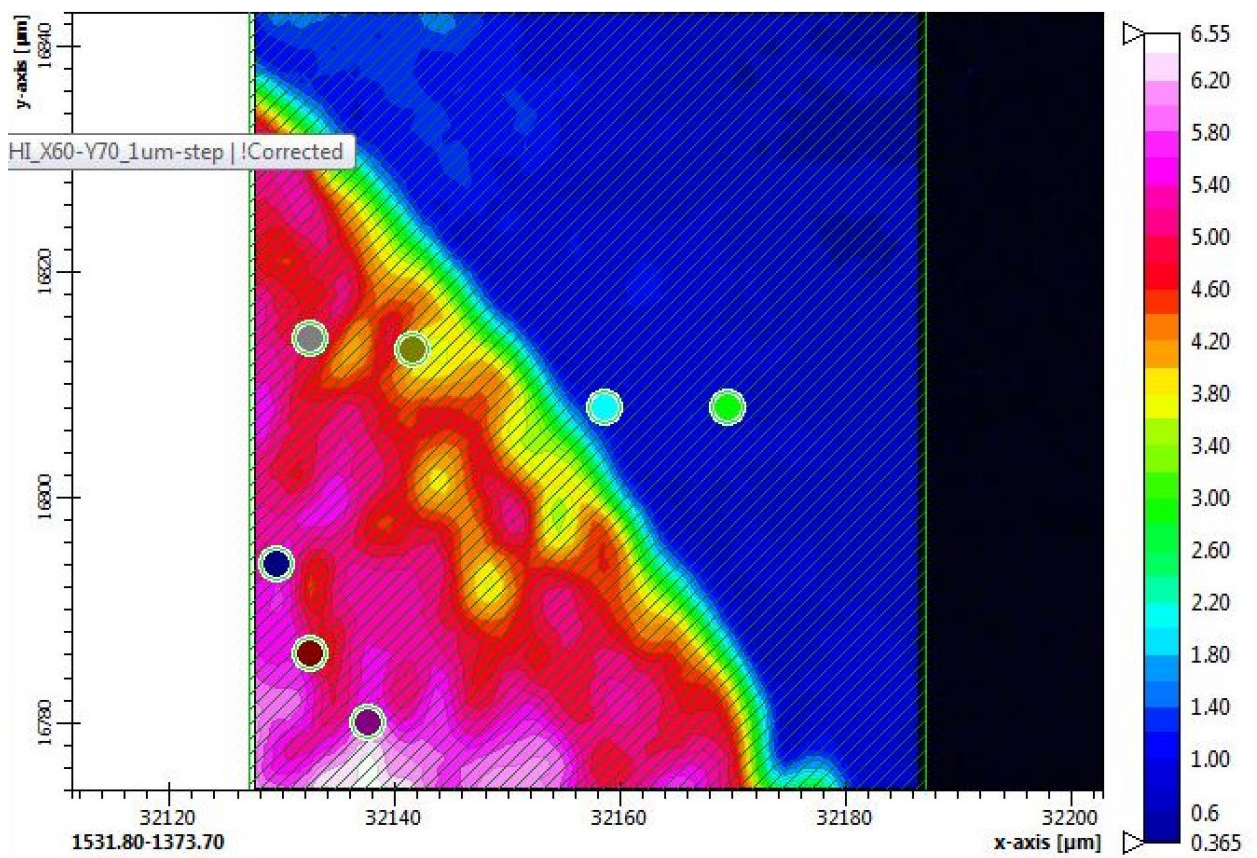
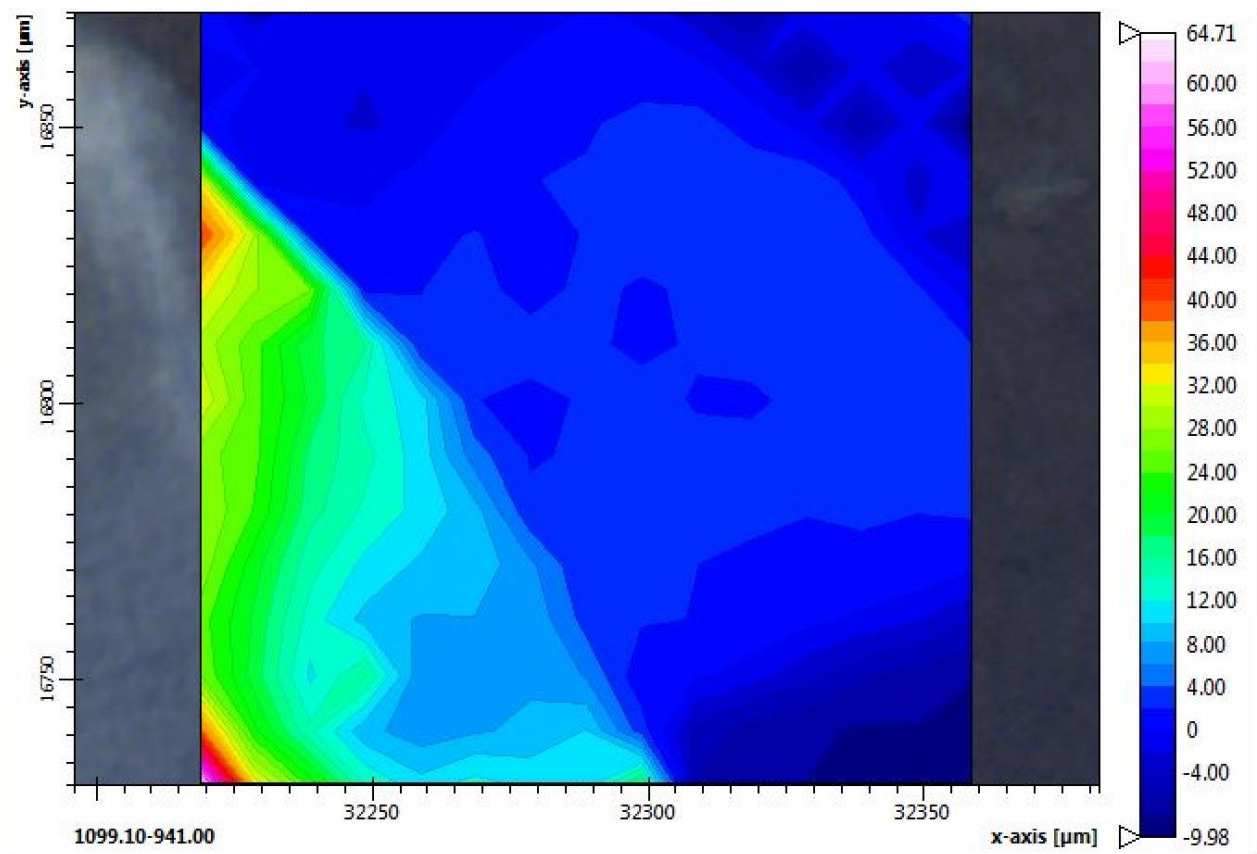
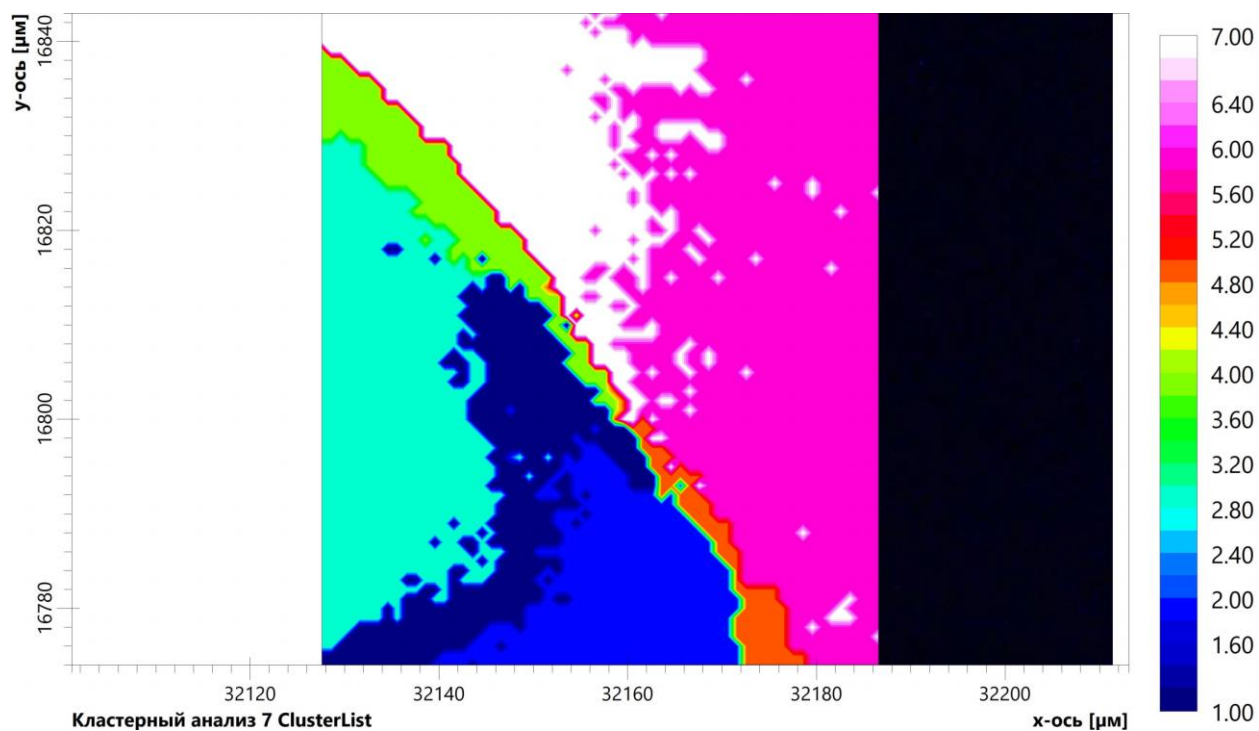
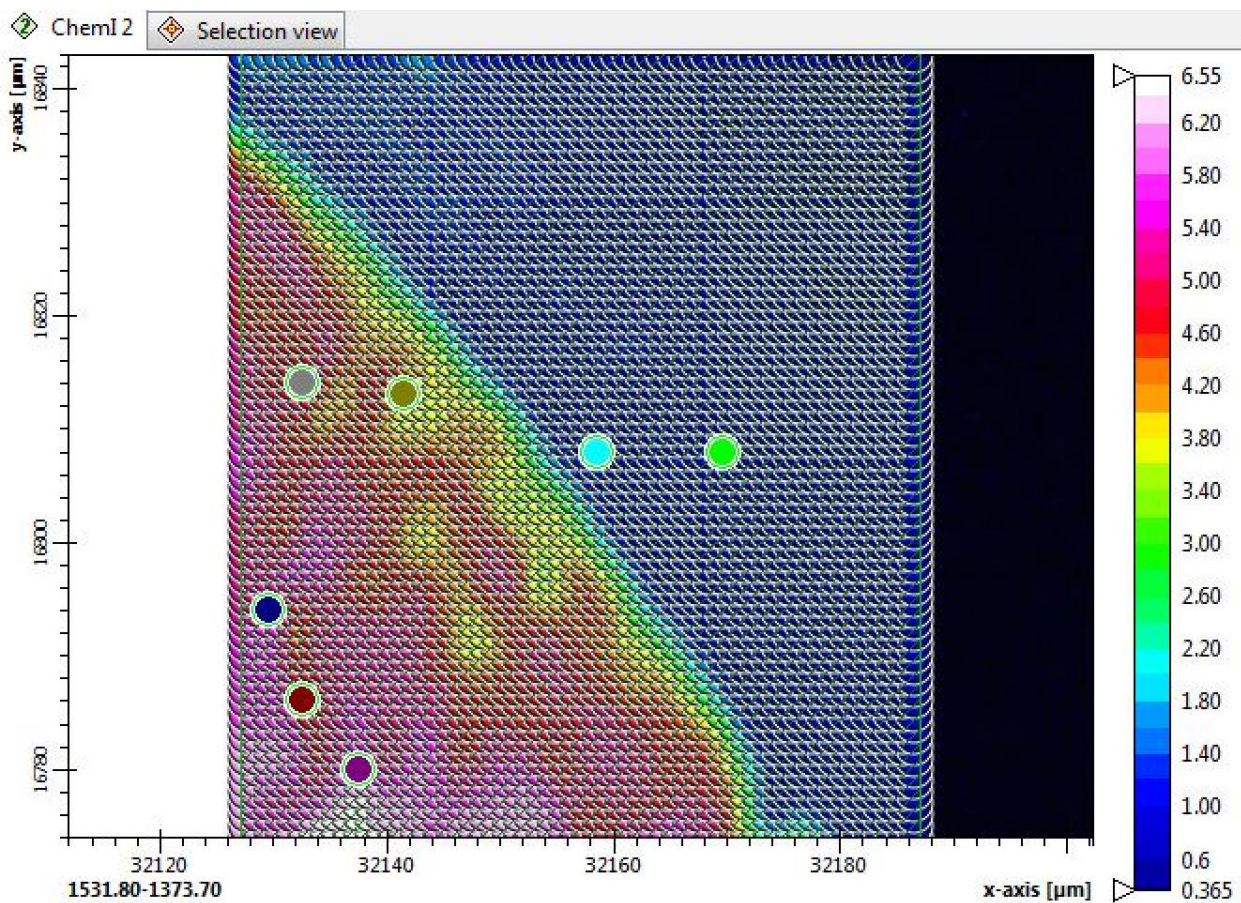


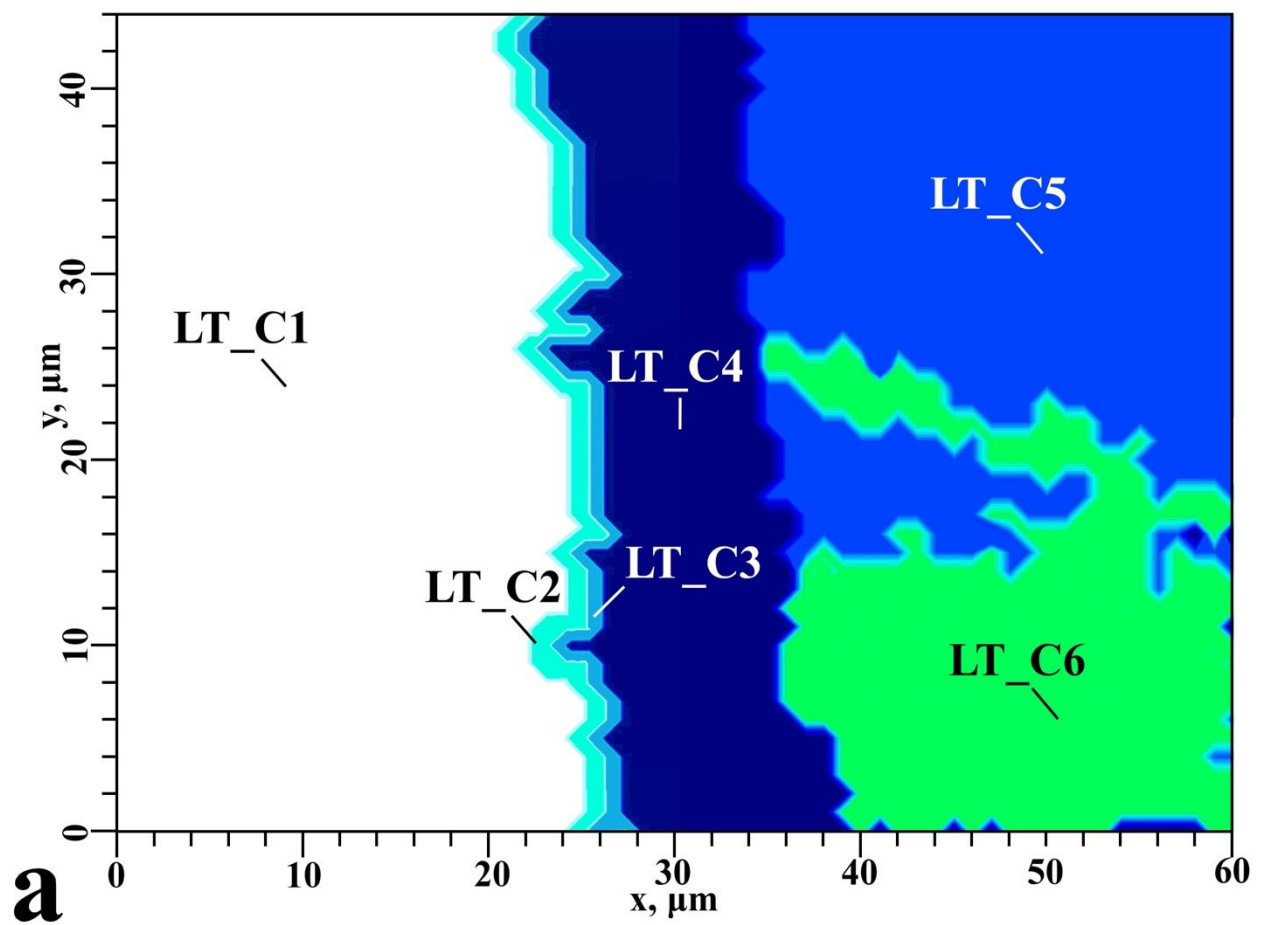
Hyperspectral Mapping Steps in the Dental Office Area with Topological Reference: Chemical and HCA Imaging.

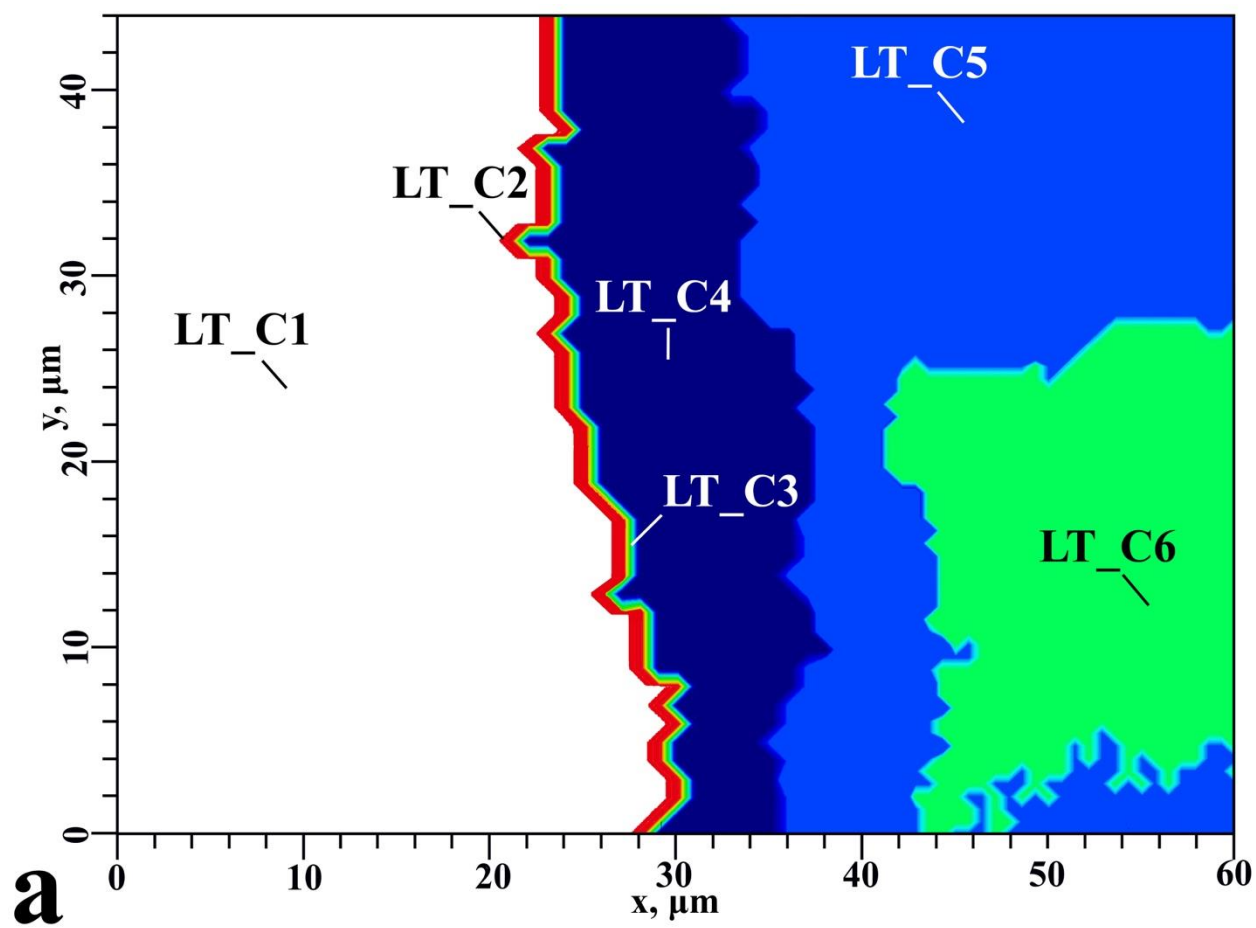


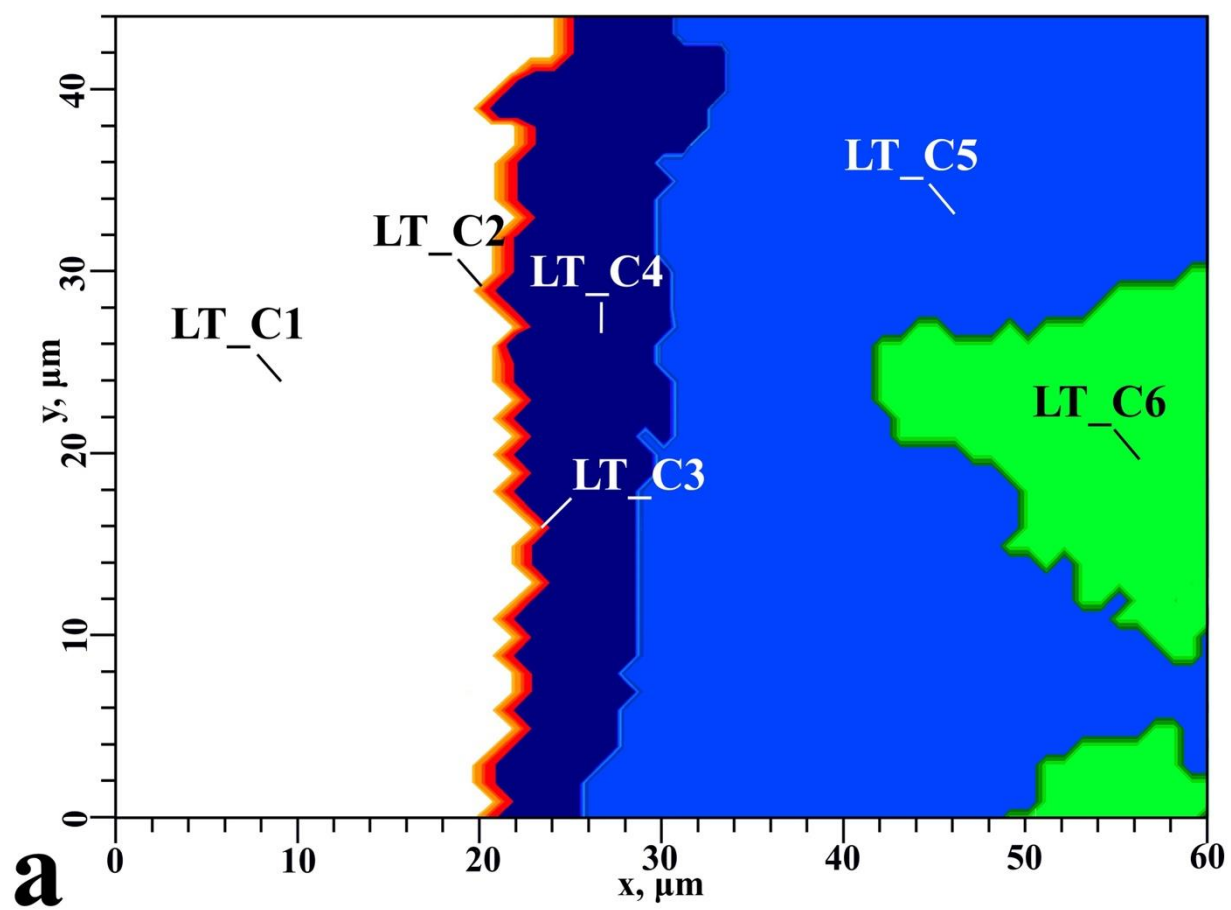


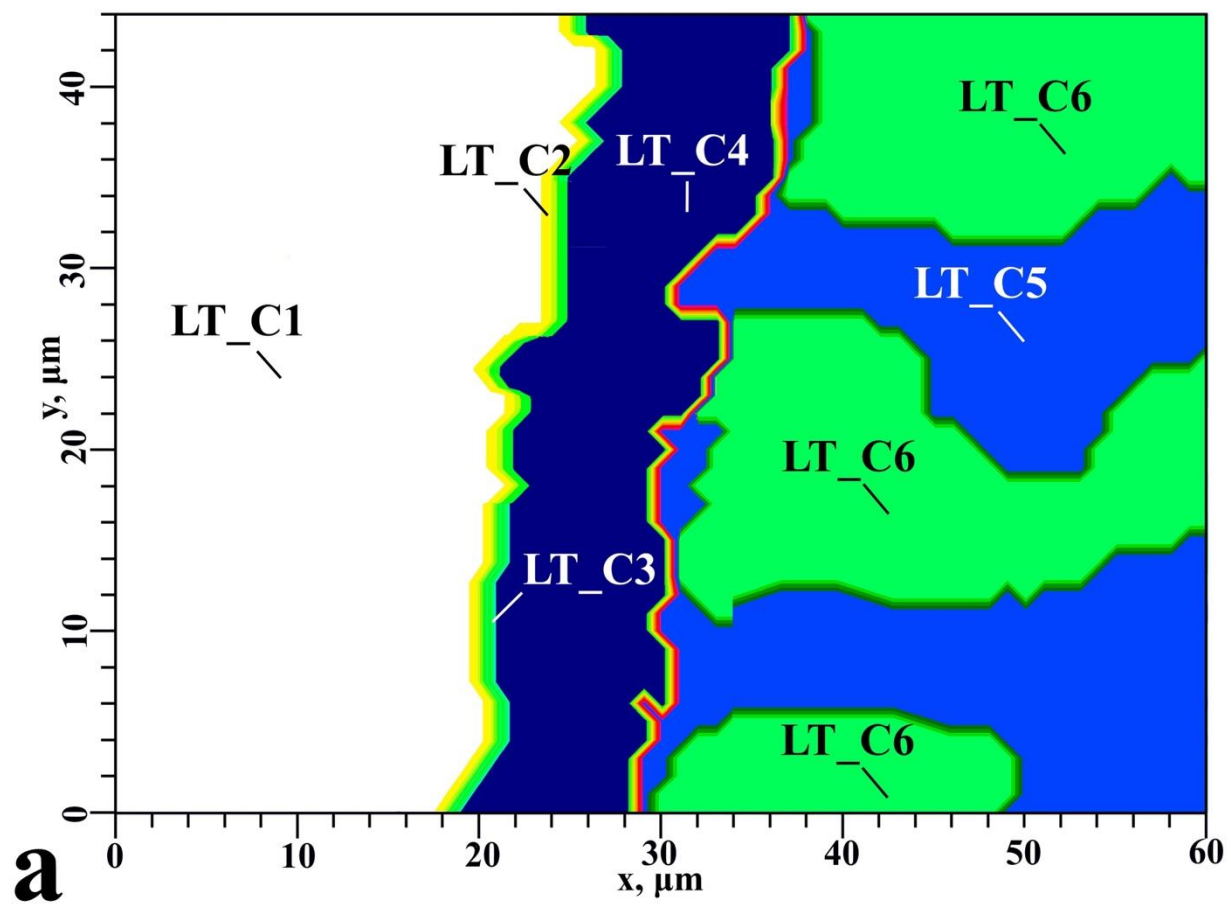


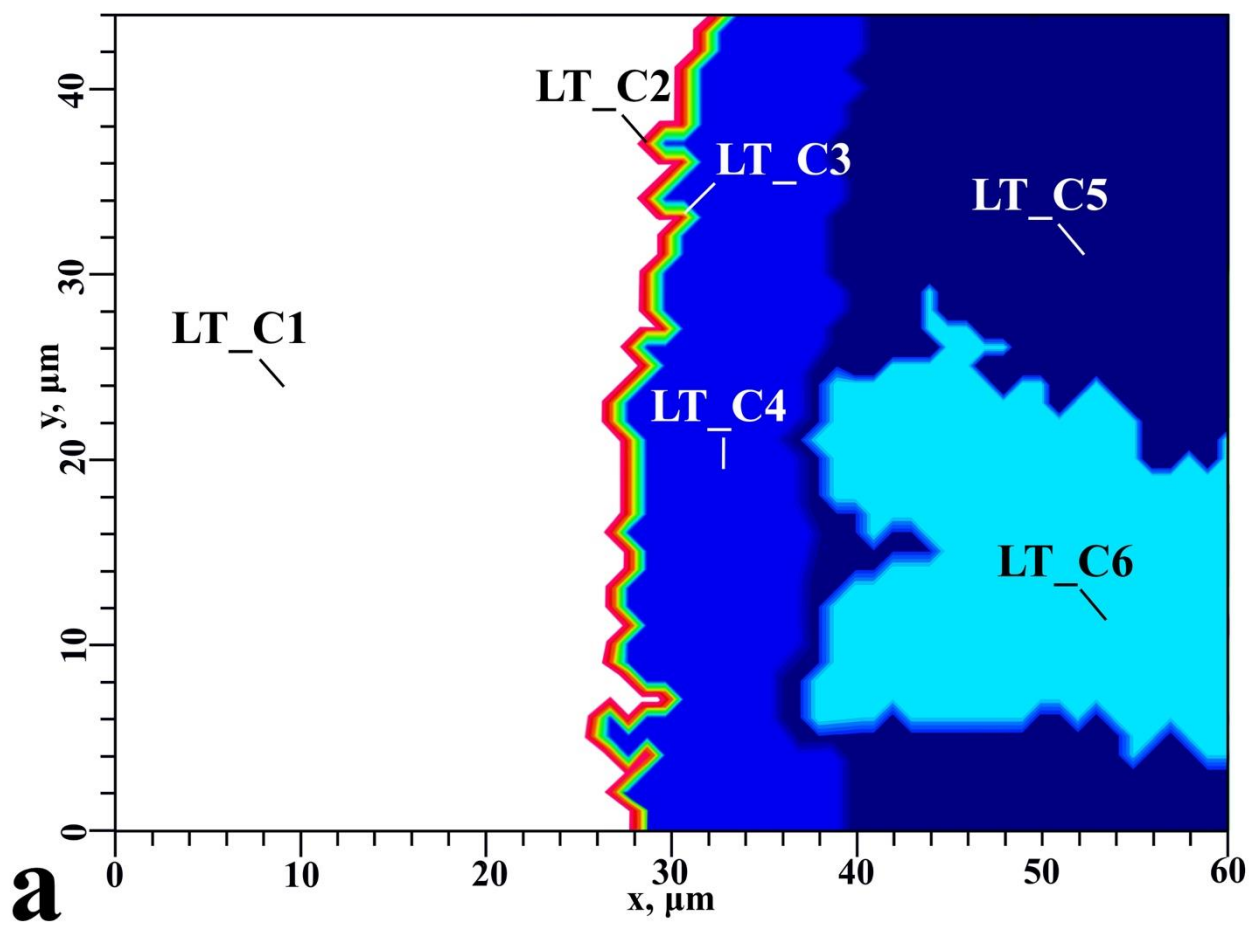
**HCA images in the area of dental composite/dental tissue interfaces
with cavity wall formation in the sample by an Er:YAG pulsed laser**



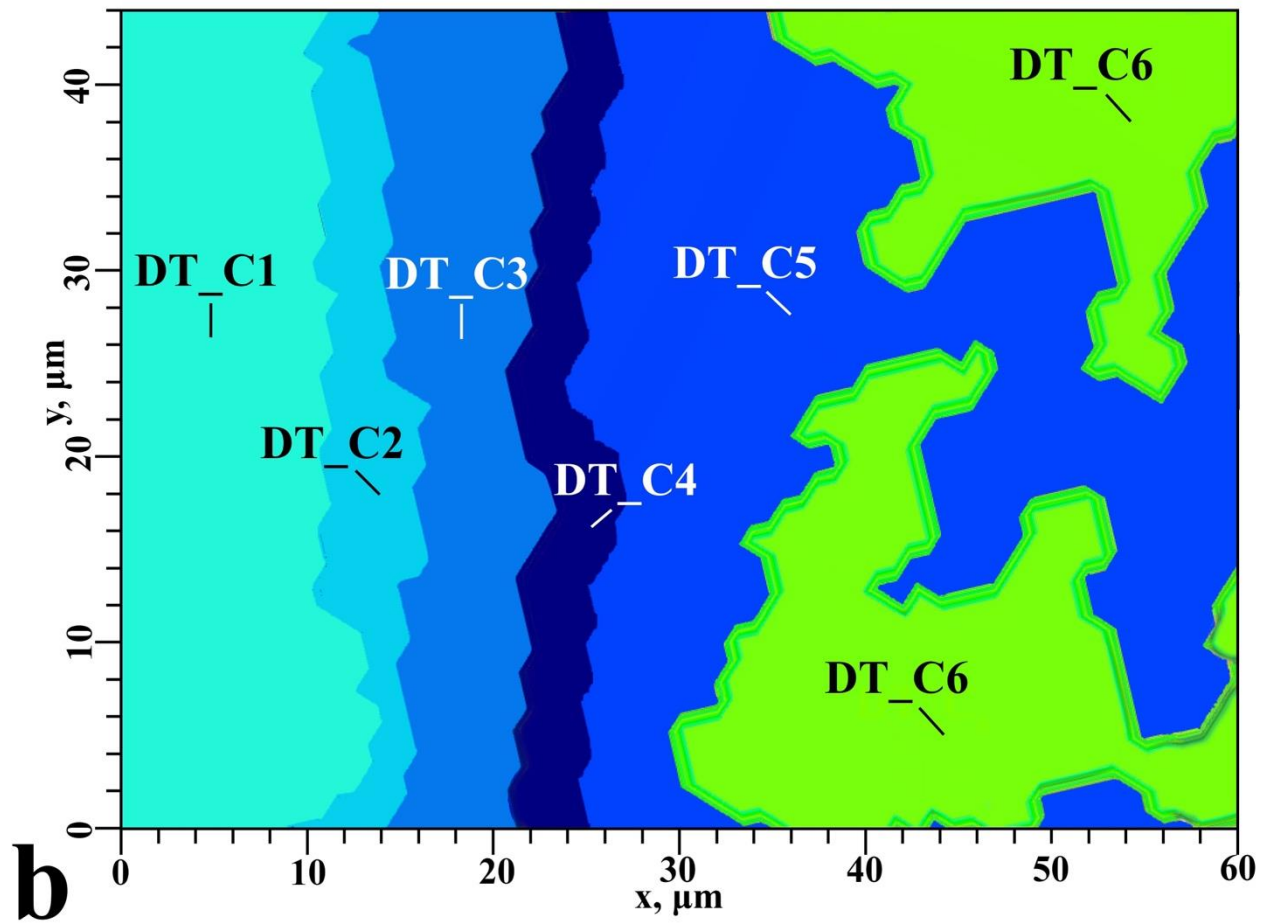


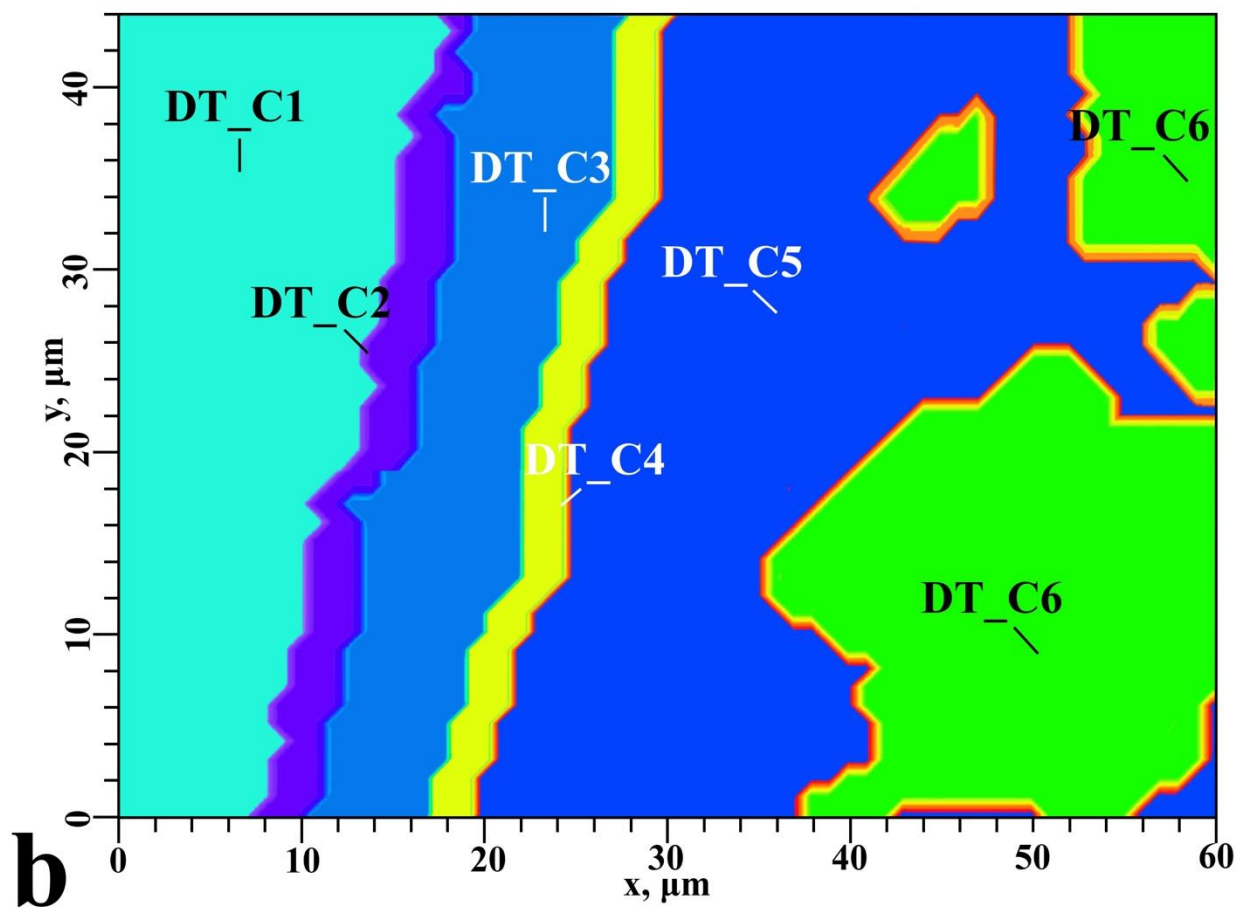


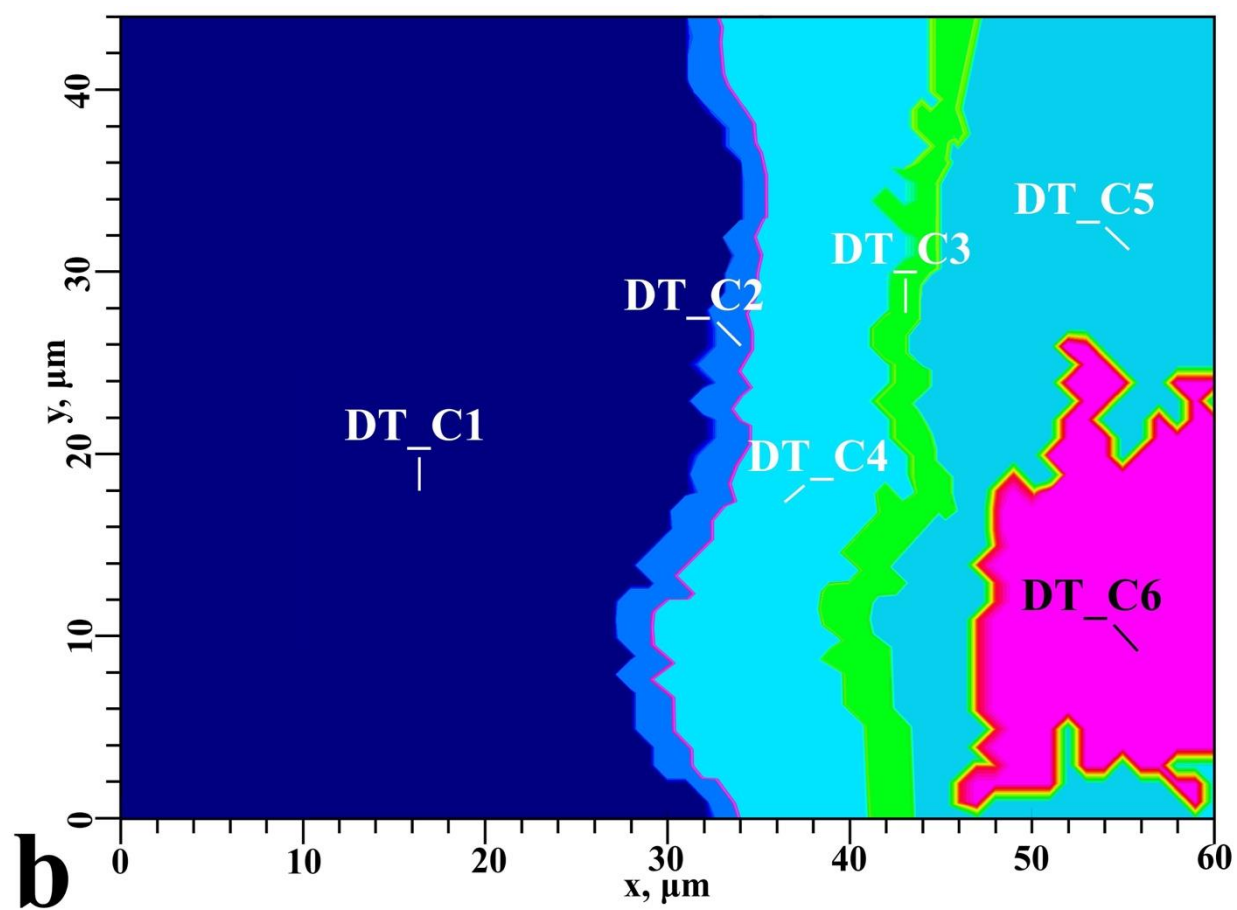


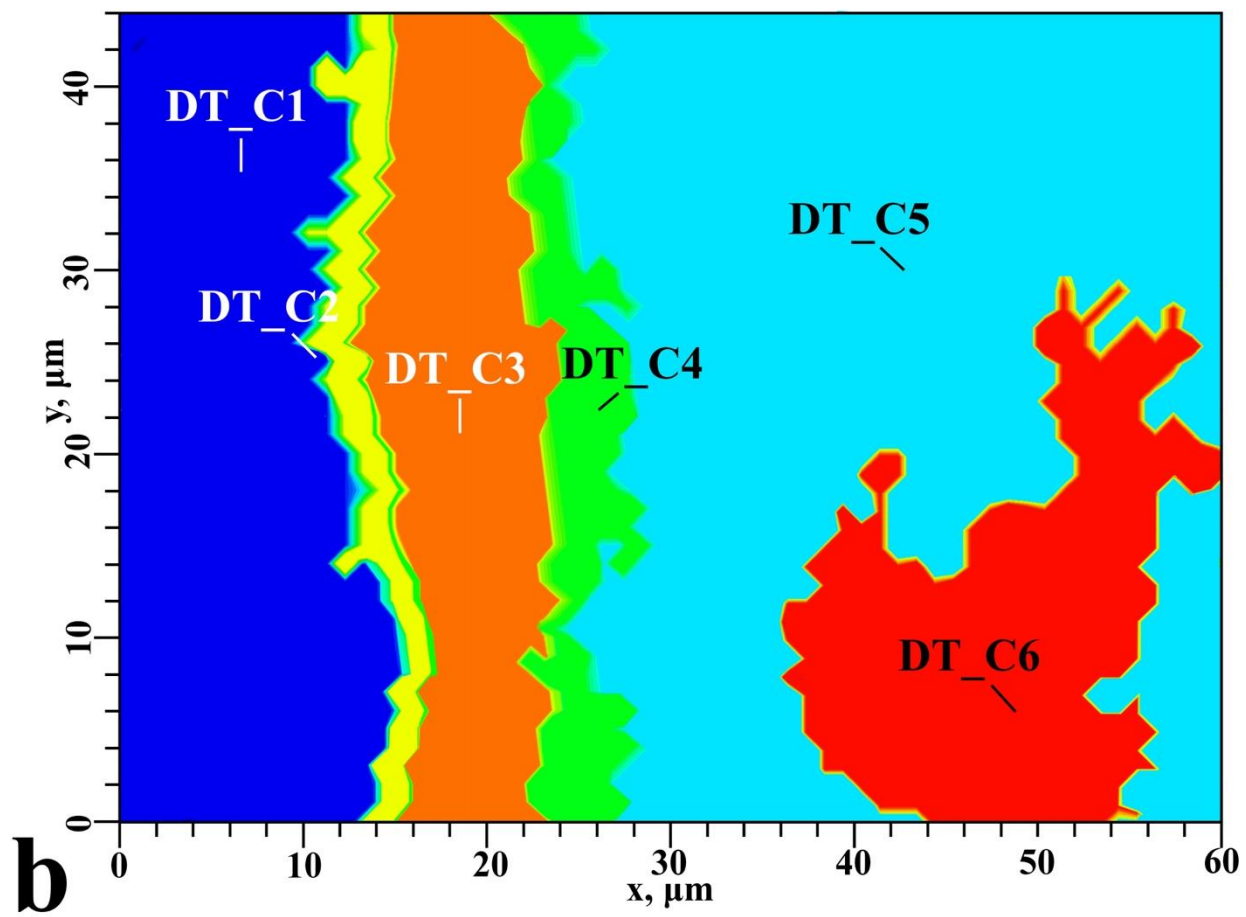


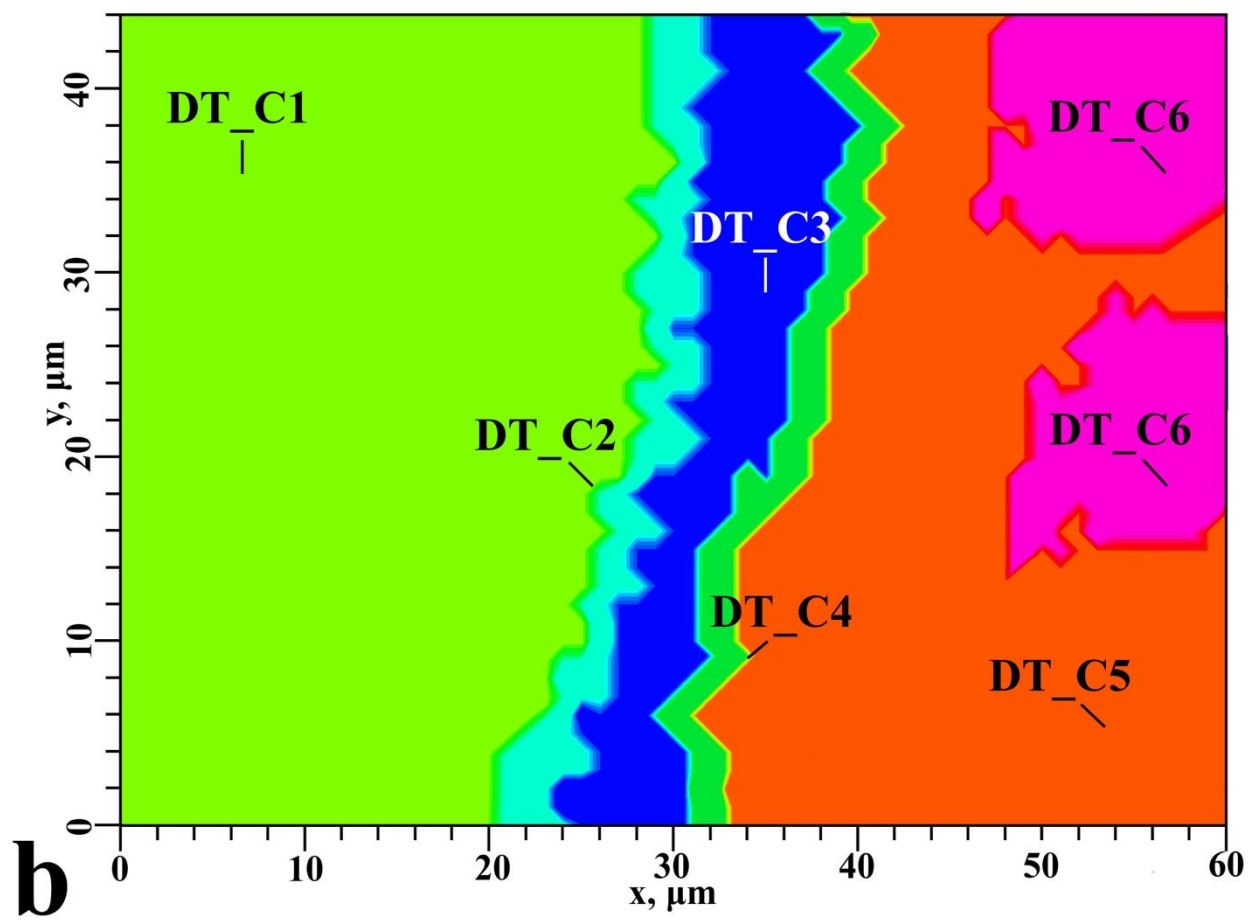
HCA images in the area of dental composite/dental tissue interfaces with cavity wall formation in the sample by diamond cylindrical drill with a turbine handpiece.



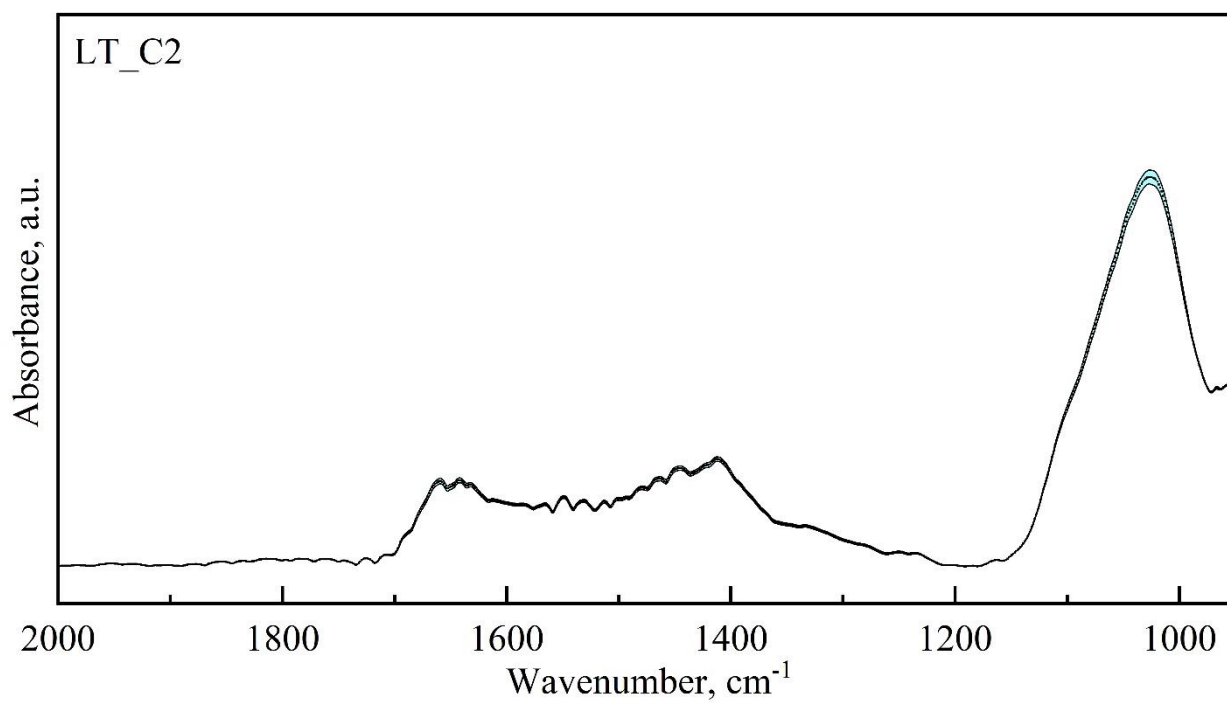
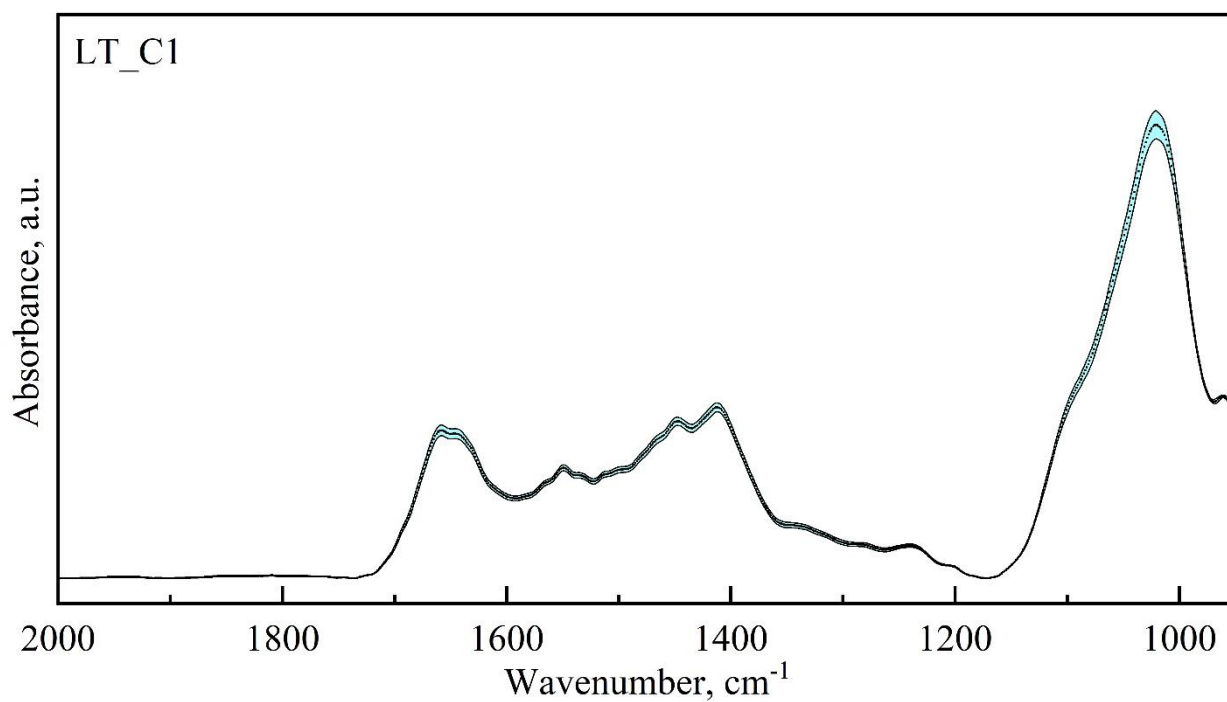


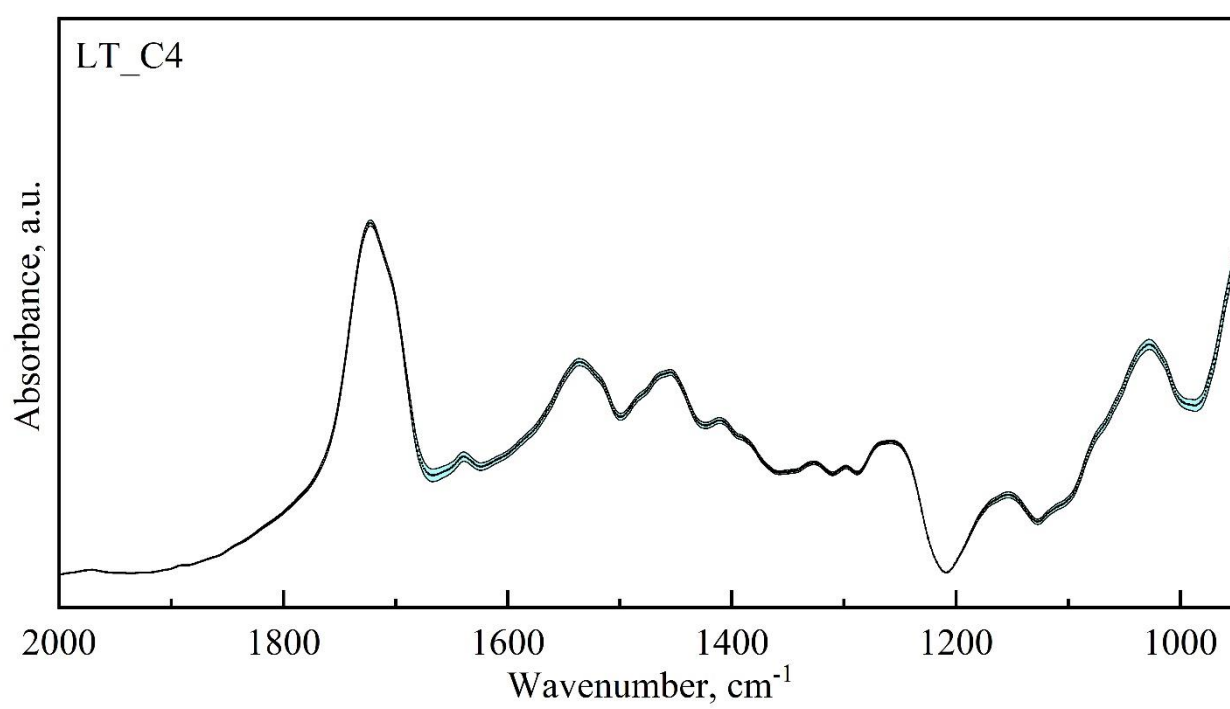
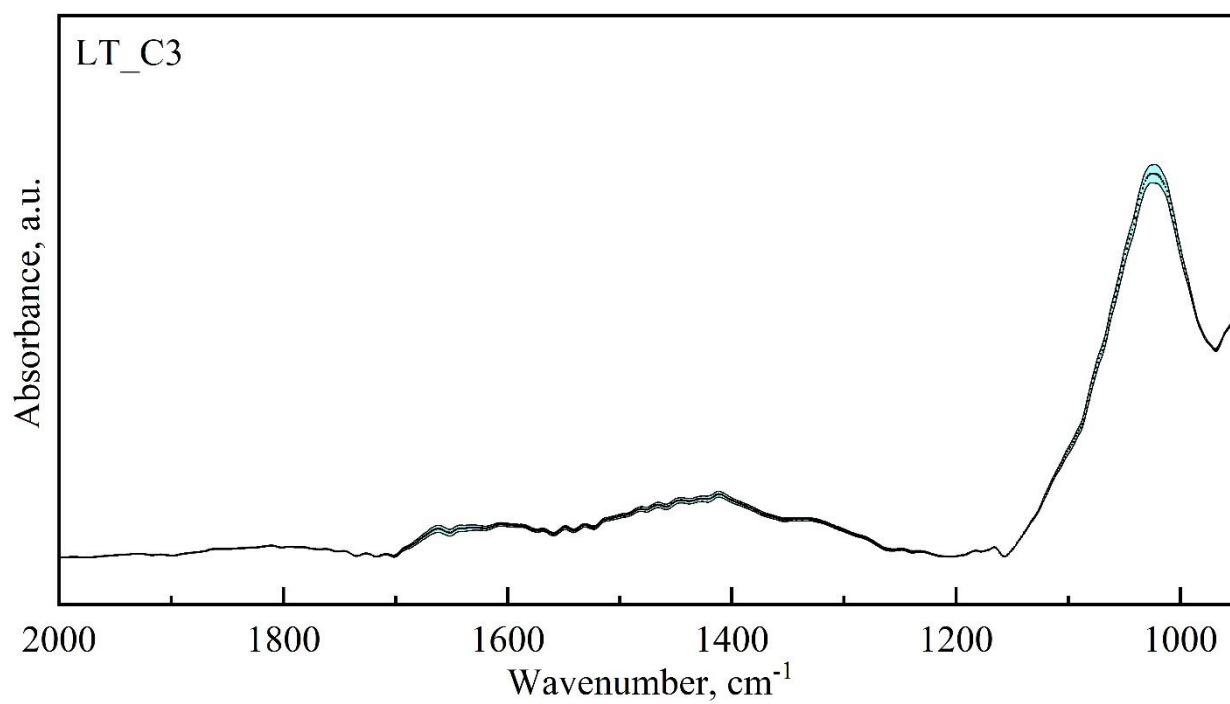


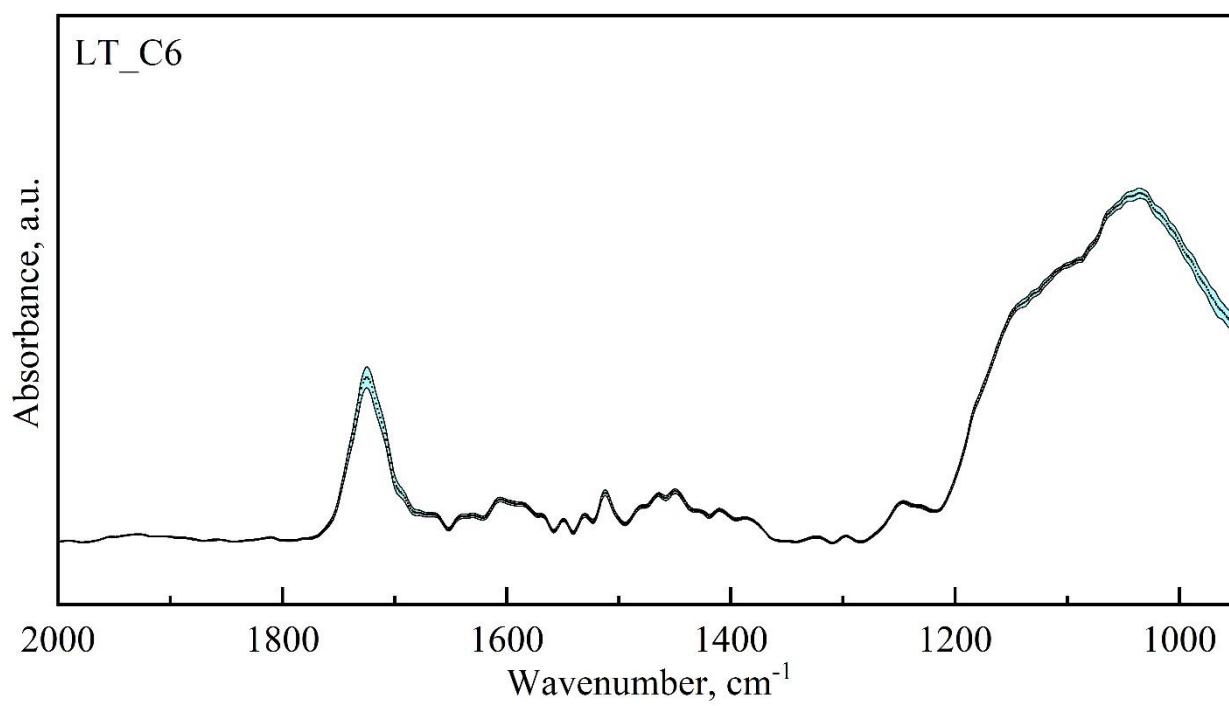
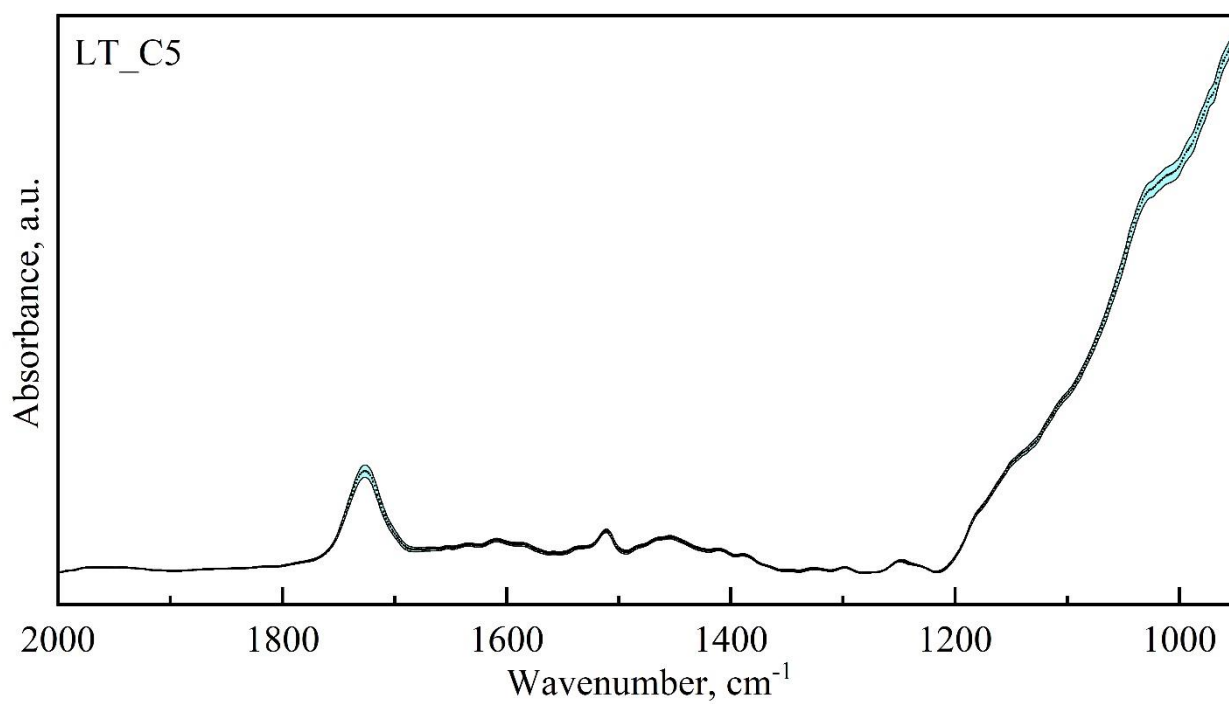




The averaged spectra of clusters with the error deviation bar (standard deviation) from the interface region with cavity wall formation in the sample using Er:YAG pulsed laser







The averaged spectra of clusters with the error deviation bar (standard deviation) from the interface region with cavity wall formation in the sample using diamond cylindrical drill with a turbine handpiece.

