

Supplementary Information

Mapping *Aspergillus niger* Metabolite Biomarkers for In Situ and Early Evaluation of Table Grapes Contamination

João Raul Belinato ¹, Carina Pedrosa Costa ², Adelaide Almeida ³, Silvia M. Rocha ^{2,*} and Fabio Augusto ^{1,*}

¹ Institute of Chemistry, University of Campinas and National Institute of Science and Technology in Bioanalysis (INCTBio), Brazil.

² Department of Chemistry & LAQV-REQUIMTE, University of Aveiro, 3810-193 Aveiro, Portugal.

³ Department of Biology & CESAM, University of Aveiro, 3810-193 Aveiro, Portugal.

* Correspondence: smrocha@ua.pt and faugusto@unicamp.br

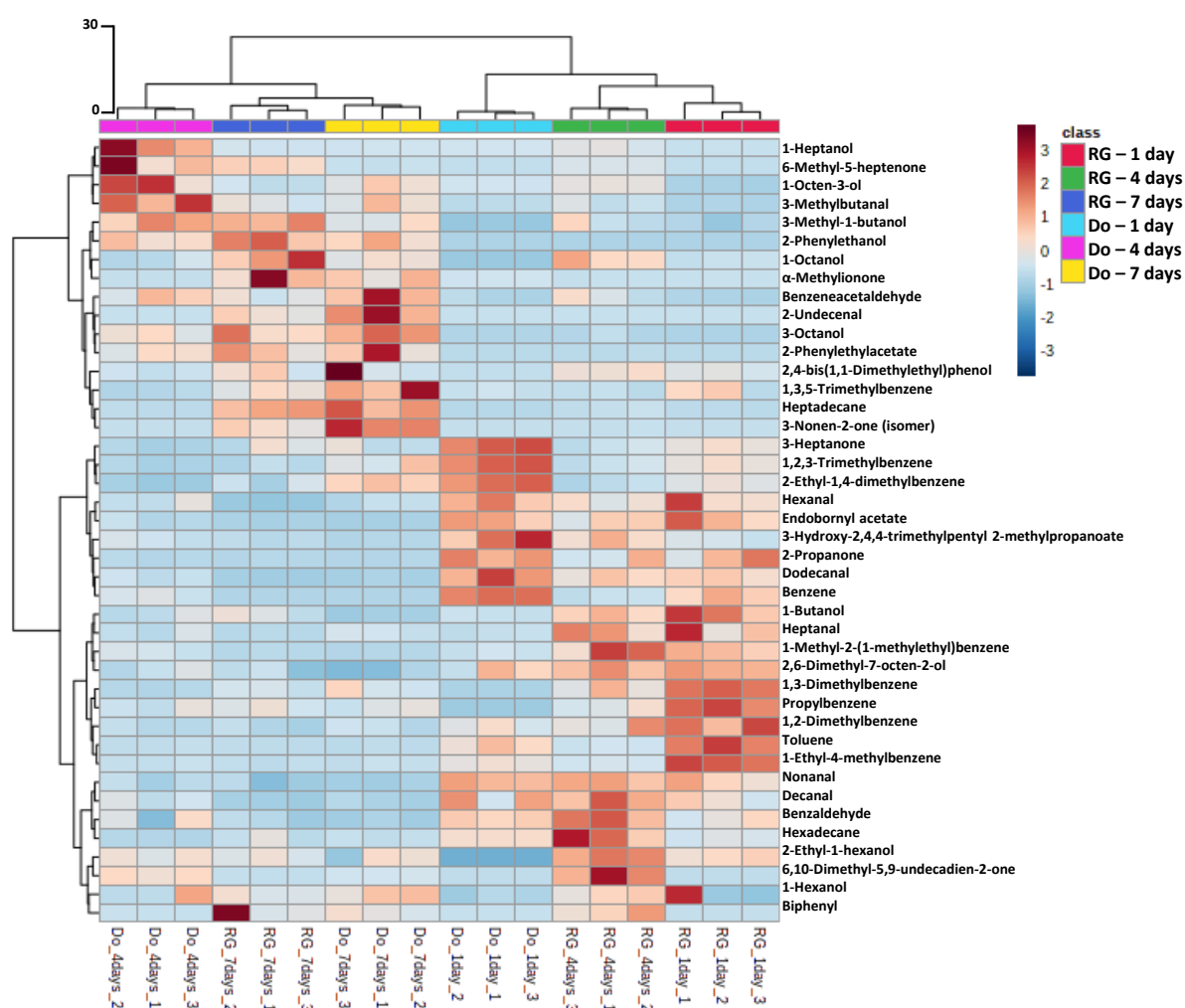


Figure S1. Dendrogram and heatmap representation of the 42 metabolites putatively identified from red (RG) and white (Do) tables grapes contaminated with *A. niger*, determined by in-situ HS-SPME/GC×GC-ToFMS, over 7 days, which illustrates the formation of two main clusters related to the two grape varieties, within each one there is an organization of the samples as a function of the growth time.