

Supplementary data:

Table S1 Primer sequence for real time-qPCR

Gene name	Forward primer sequences (5'-3')	Reverse primer sequences (5'-3')
Actin	AGCAACTGGGATGACATGGA	GGGTTGAGAGGTGCCTCAGT
LsPAL1	GGAAAACCGCAGAAGCAGTC	TTCTCGCAGAATCTCGACGG
LsPAL2	CGATAAGGTGTTCACTGCTTTG	TACACATTTGGCATGAGAGTTG
LsPAL3	GCTCGGAAGTGGGTTCTTAACA	CACACTCCAACAAGGGATCAAT
LsPAL4	AACAATGGCGAGAAGGAGAAA	TCGATCCTGTTAGGGATTGCTAA
LsC4H	CTTGAAGCACTCTACTGTCG	TCAAAATCTCCACATCACAC
Ls4CL	GTTTCTACACAAGTTGCTCC	TACAGTTTGGAGGTTGCAAG

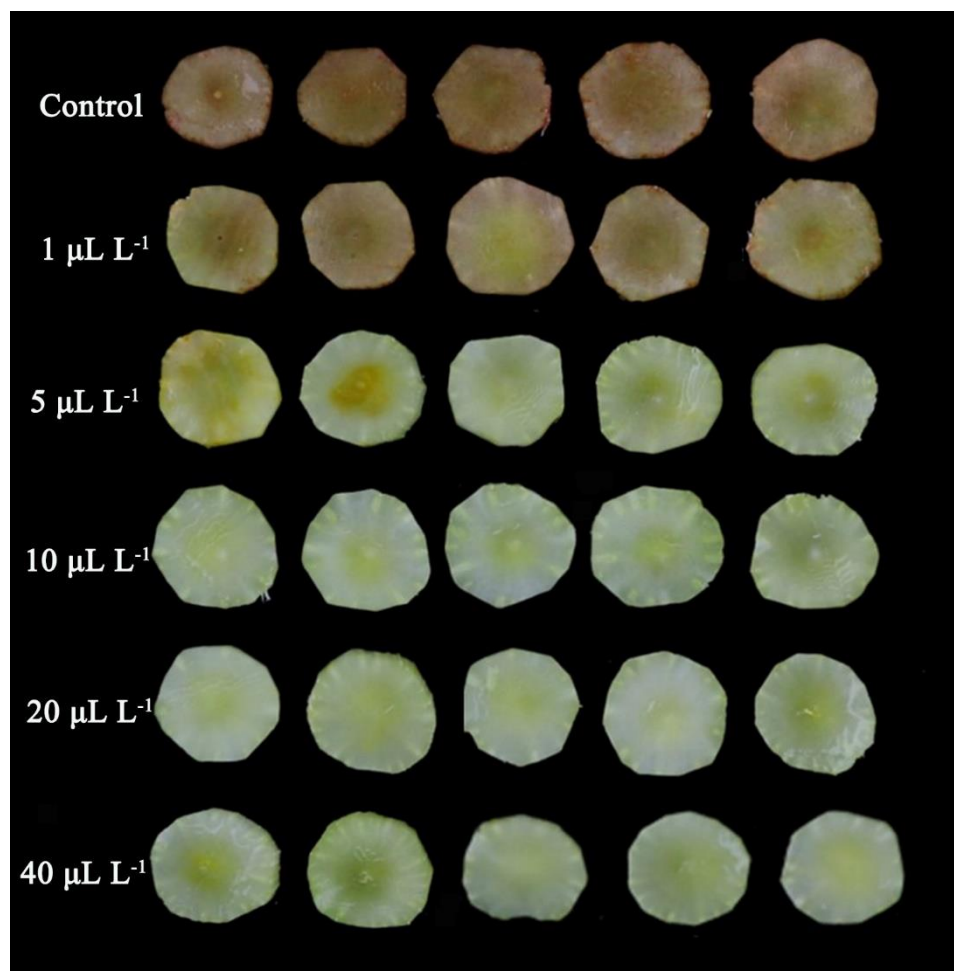


Figure S1. Appearance of fresh-cut stem lettuce treated with different concentrations of

diacetyl for 12 d at 4°C.

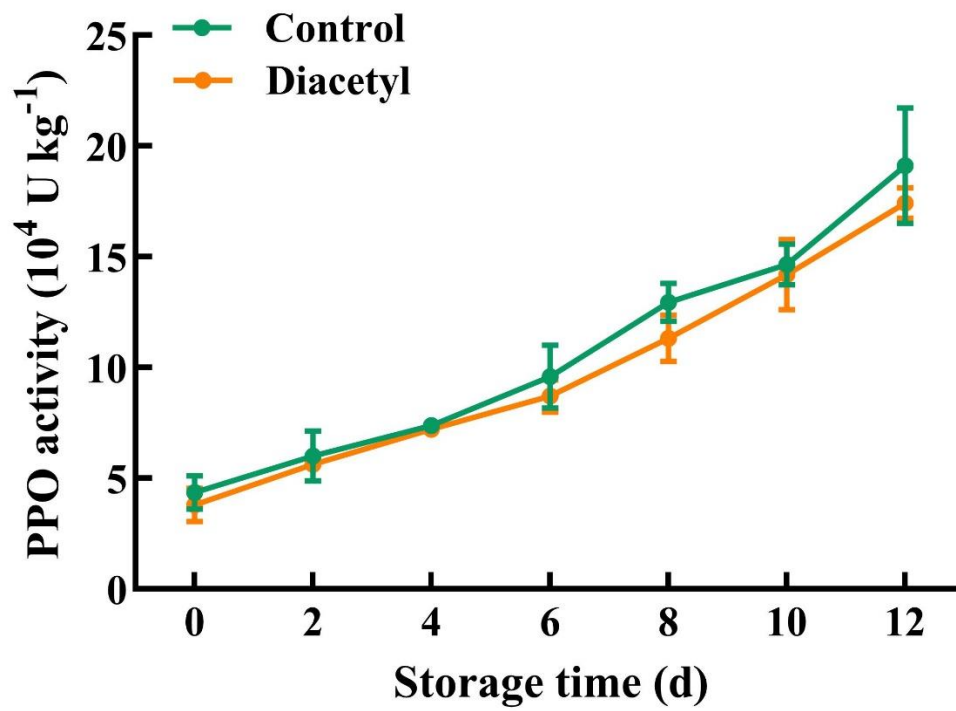


Figure S2. Effects of diacetyl treatment on PPO activity during storage time at 4 °C.

Vertical bars represent standard deviations.