

Supplementary Material

for

Hydrologic Characteristics of Streamflow in the Southeast Atlantic and Gulf Coast Hydrologic Region during 1939–2016 and Conceptual Map of Potential Impacts

Aavudai Anandhi ¹, Christy Crandall ² and Chance Bentley ³

¹ Biological Systems Engineering, College of Agriculture and Food Sciences, Florida A&M University, Tallahassee, Florida; anandhi@famu.edu

² School of the Environment, Florida A&M University, Tallahassee, Florida; christy.crandall@famu.edu

³ College of Agriculture and Food Sciences, Florida A&M University, Tallahassee, Florida;

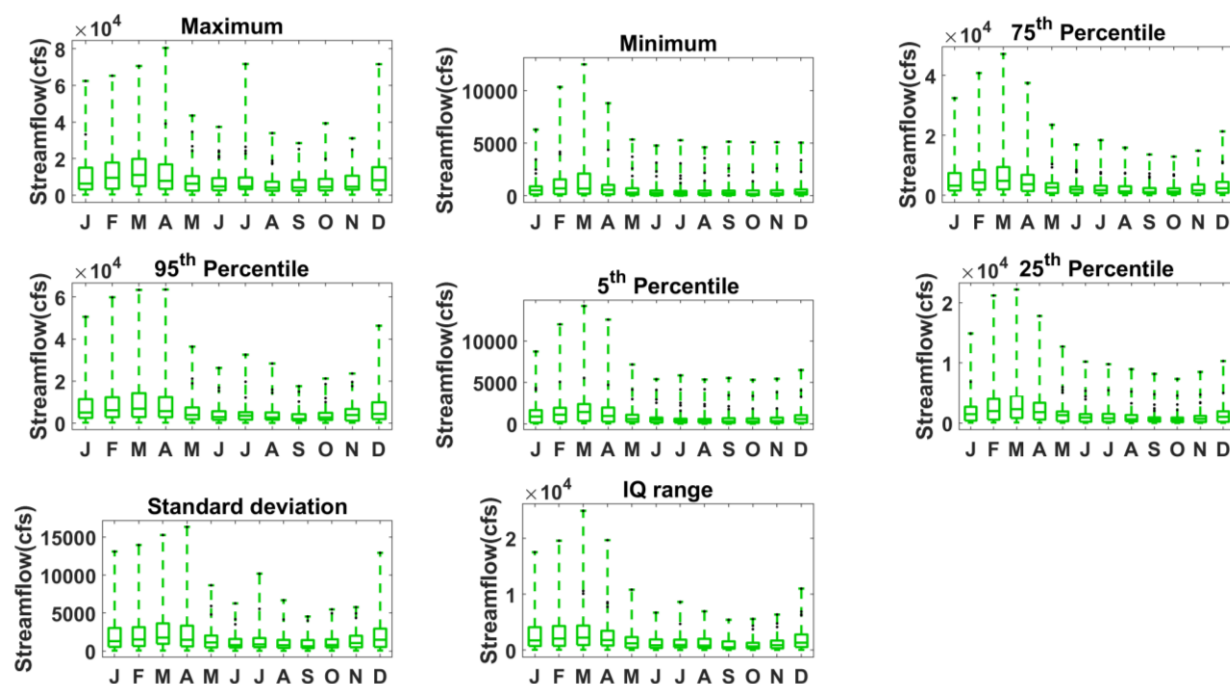
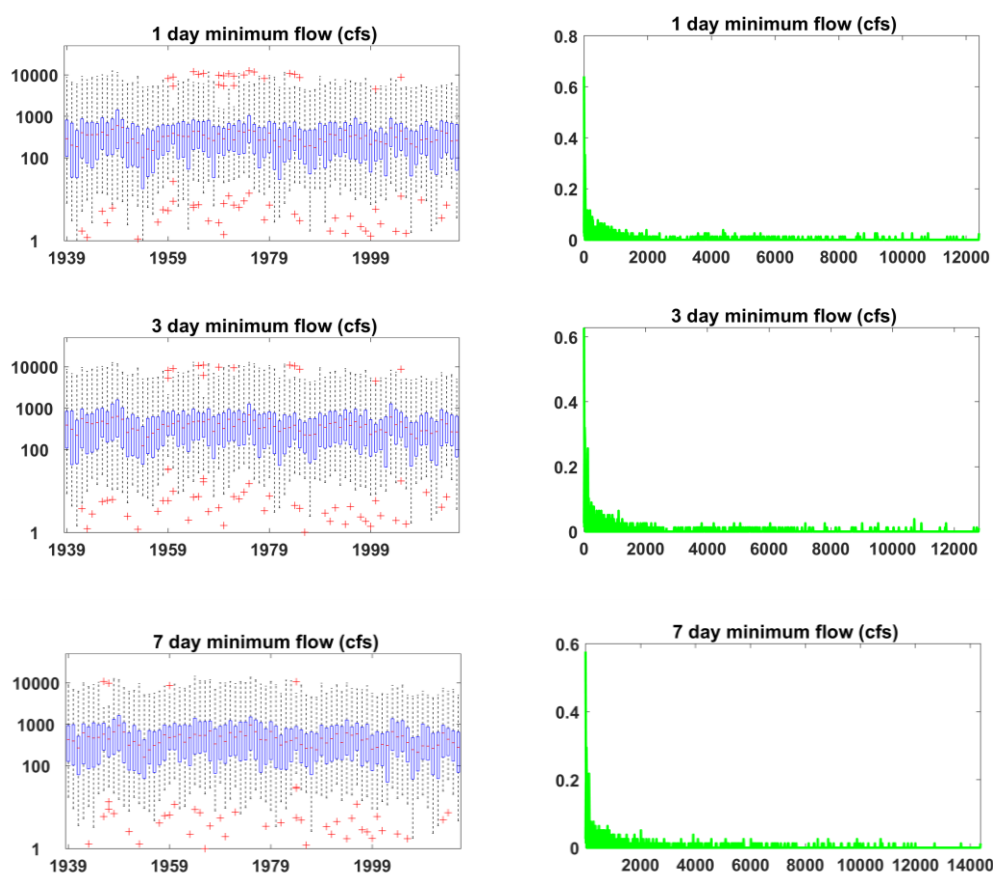


Figure S1. Monthly distribution of streamflow statistics from the 30 stations during the study period 1939–2016.



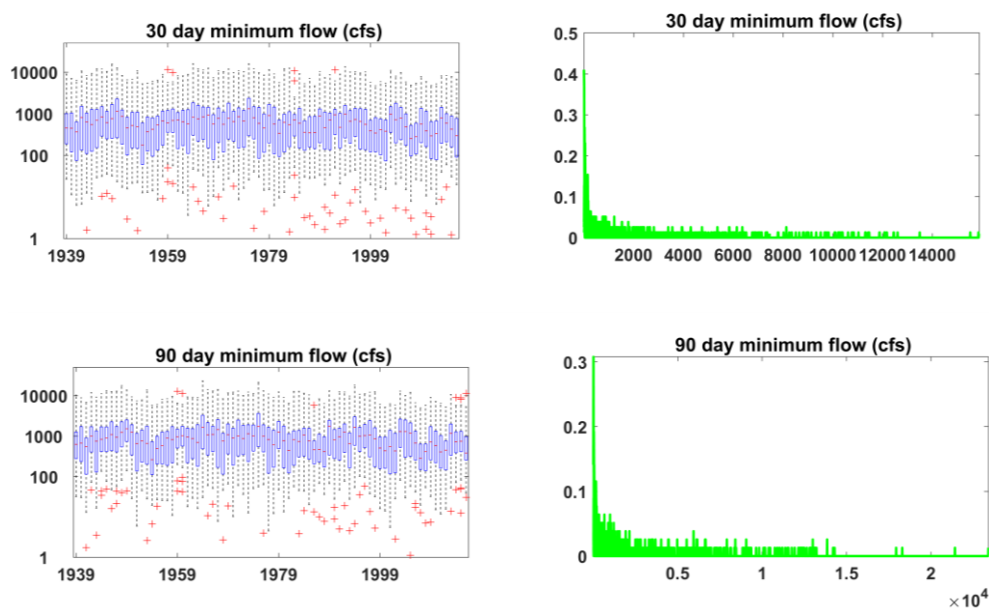
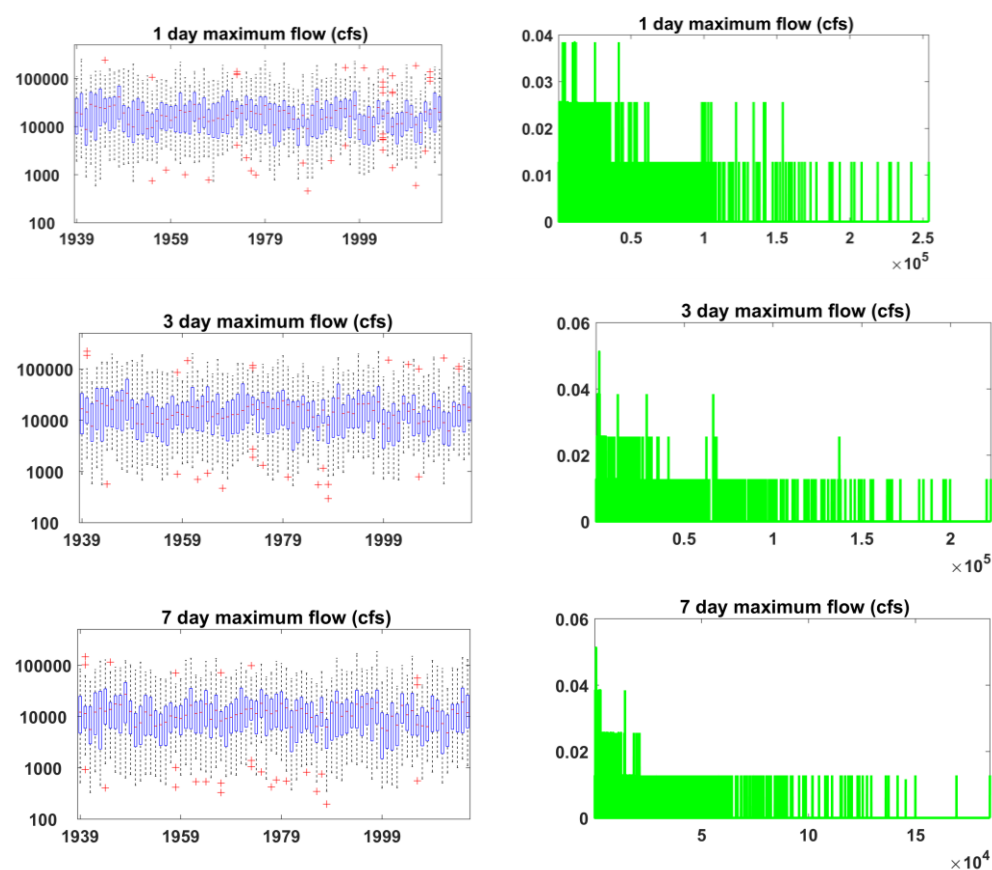


Figure S2. Boxplot of annual distribution of magnitude of low flow streamflow statistics from the 30 stations during the study period 1939–2016.



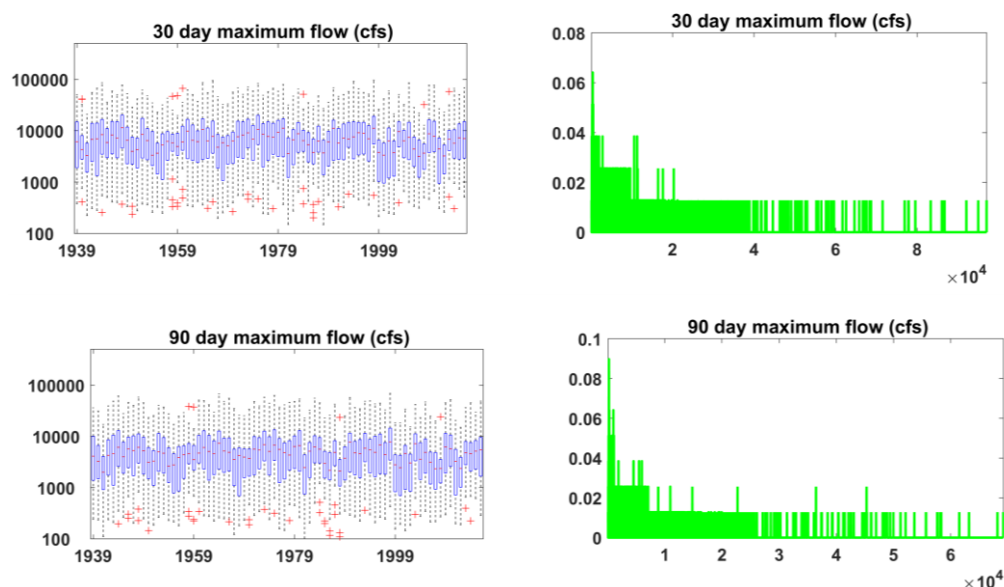


Figure S3. Boxplot of annual distribution of magnitude of low flow streamflow statistics from the 30 stations during the study period 1939–2016.

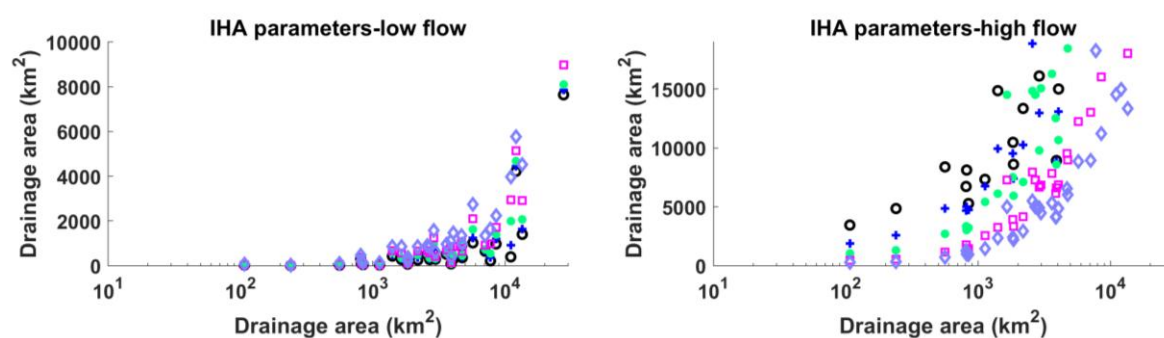


Figure S4. Scatter plot to represent the relationship was observed between the low and high flow parameters and the drainage area.

Table S1. Documentation of the literature was reviewed using search words (in quotes) and the corresponding number of studies (in parenthesis).

1	"ROANOKE RIVER" (5,750)	"ROANOKE RIVER basin" (788)	"ROANOKE RIVER streamflow" (none)	"ROANOKE RIVER hydrology" (2)
2	"FISHING CREEK" (1840)	"FISHING CREEK basin" (8)	"FISHING CREEK streamflow" (none)	"FISHING CREEK hydrology" (none)
3****	"FLAT RIVER " NC (1,010)	"FLAT RIVER basin" NC (18)	"FLAT RIVER streamflow" NC (none)	"FLAT RIVER hydrology" NC (none)
4	"NEUSE RIVER" (9,860)	"NEUSE RIVER basin" (1,620)	"NEUSE RIVER streamflow" (4)	"NEUSE RIVER hydrology" (1)
5^	"DEEP RIVER " (5,380)	"DEEP RIVER basin" (582)	"DEEP RIVER streamflow" (none)	"DEEP RIVER hydrology" (none)
6	"YADKIN RIVER " (1640")	"YADKIN RIVER basin" (117)	"YADKIN RIVER streamflow" (none)	"YADKIN RIVER hydrology" (none)

7	"PEE DEE RIVER " (2,300)	"PEE DEE RIVER basin" (264)	"PEE DEE RIVER streamflow"(1)	"PEE DEE RIVER hydrology" (none)
8	"LINVILLE RIVER " (311)	"LINVILLE RIVER basin" (7)	"LINVILLE RIVER streamflow" (none)	"LINVILLE RIVER hydrology" (none)
9**	"BROAD RIVER " (13,900)	"BROAD RIVER basin" (513)	"BROAD RIVER streamflow" (none)	"BROAD RIVER hydrology" (none)
10	"SALUDA RIVER " (912)	"SALUDA RIVER basin" (64)	"SALUDA RIVER streamflow" (none)	"SALUDA RIVER hydrology" (none)
11	" SAVANNAH RIVER " (96,000)	" SAVANNAH RIVER basin" (868)	" SAVANNAH RIVER streamflow" (5)	" SAVANNAH RIVER hydrology" (5)
12	" OCMULGEE RIVER " (1430)	" OCMULGEE RIVER basin" (71)	" OCMULGEE RIVER streamflow" (none)	" OCMULGEE RIVER hydrology" (none)
13	" OCONEE RIVER " (2,250)	" OCONEE RIVER basin" (163)	" OCONEE RIVER streamflow" (1)	" OCONEE RIVER hydrology" (none)
14*	" ST. MARYS RIVER " Florida (1,760)	" ST. MARYS RIVER basin" florida (43)	" ST. MARYS RIVER streamflow" (none)	" ST. MARYS RIVER hydrology" (none)
15	" SUWANNEE RIVER " (15,000)	" SUWANNEE RIVER basin" (876)	" SUWANNEE RIVER streamflow" (5)	" SUWANNEE RIVER hydrology" (1)
16	" OCHLOCKONEE RIVER " (827)	" OCHLOCKONEE RIVER basin" (76)	" OCHLOCKONEE RIVER streamflow" (none)	" OCHLOCKONEE RIVER hydrology" (none)
17	" CHATTAHOOCHEE RIVER " (7,110)	" CHATTAHOOCHEE RIVER basin" (605)	" CHATTAHOOCHEE RIVER streamflow" (none)	" CHATTAHOOCHEE RIVER hydrology" (none)
18	" FLINT RIVER " (7,520)	" FLINT RIVER basin" (1,840)	" FLINT RIVER streamflow" (14)	" FLINT RIVER hydrology" (2)
19	" APALACHICOLA RIVER " (6,150)	" APALACHICOLA RIVER basin" (425)	" APALACHICOLA RIVER streamflow" (none)	" APALACHICOLA RIVER hydrology" (1)
20	" OOSTANAULA RIVER " (295)	" OOSTANAULA RIVER basin" (2)	" OOSTANAULA RIVER streamflow" (none)	" OOSTANAULA RIVER hydrology" (none)
21	" ETOWAH RIVER " (1,580)	" ETOWAH RIVER basin" (343)	" ETOWAH RIVER streamflow" (1)	" ETOWAH RIVER hydrology" (none)
22	" TALLAPOOSA RIVER " (3,760)	"TALLAPOOSA RIVER basin" (54)	" TALLAPOOSA RIVER streamflow" (none)	" TALLAPOOSA RIVER hydrology" (none)
23	" CAHABA RIVER " (1,390)	"CAHABA RIVER basin" (86)	" CAHABA RIVER streamflow" (none)	" CAHABA RIVER hydrology" (none)

24	" BLACK WARRIOR RIVER " (1,940)	"BLACK WARRIOR RIVER basin" (89)	" BLACK WARRIOR RIVER streamflow" (none)	" BLACK WARRIOR RIVER hydrology" (none)
----	---------------------------------	----------------------------------	--	---

- Search Results in google scholar on 3/30/2018
- * results could include St Marys River flowing through Ontario (Canada) and Michigan (US); without Florida the values were " ST. MARYS RIVER " Florida (3,100) " ST. MARYS RIVER basin" (47) " ST. MARYS RIVER streamflow" (none) " ST. MARYS RIVER hydrology" (1)
- ** results could include Broad River, a tributary of Savannah river in Georgia
- **** results could include other Flat River's that are flowing through Michigan, Rode Island. Without NC the values were "FLAT RIVER " (3,610) "FLAT RIVER basin" (65) "FLAT RIVER streamflow" (none) "FLAT RIVER hydrology" (none)
- ^ results could include Deep river town and other establishments when NC not included "DEEP RIVER " (20,400) "DEEP RIVER basin" (551) "DEEP RIVER streamflow" (none) "DEEP RIVER hydrology" (none)

Table S2. Summary of missing data by station and missing-time period intervals.

USGS STATION ID	STATION NAME	NMISS	MISSING INTERVAL 1	MISSING INTERVAL 2
02056000	ROANOKE RIVER at NIAGARA, VA	4	12/09/2016-- 12/10/2016	01/08/2017-- 01/10/2017
02080500	ROANOKE RIVER at ROANOKE RAPIDS, NC	2	10/1/1993	10/1/1995
02083000	FISHING CREEK NEAR at ENFIELD, NC	2	10/1/1993	10/1/1995
02085500	FLAT RIVER at BAHAMA, NC	4	11/16/2017-- 11/17/2017	03/01/2017-- 03/02/2017
02169000	SALUDA RIVER NEAR at COLUMBIA, SC	2	10/05/2016-- 10/06/2016	
02197000	SAVANNAH RIVER at AUGUSTA, GA	1	12/14/1985	
02223000	OCONEE RIVER at MILLEDGEVILLE, GA	1	1/15/1991	
02395980	ETOWAH RIVER at GA 1 LOOP, NEAR ROME, GA	9	10/01/1938, 3/8/2017— 3/10/2017, 03/13/2017,	03/16/2017 — 03/17/2017, 05/25/2017 — 05/26/2017
02424000	CAHABA RIVER at CENTREVILLE, AL	4	10/21/2016-- 10/22/2016	11/06/2016-- 11/07/2016
02465000	BLACK WARRIOR RIVER at OLIVER LOCK AND DAM at NORTHPORT, AL	5	11/16/2015-- 11/20/2015	