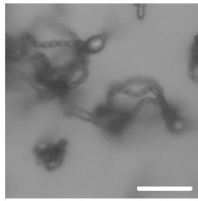
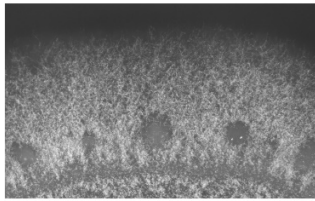
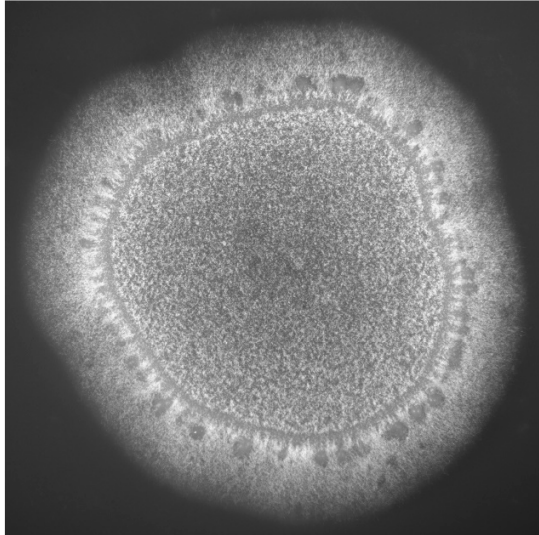
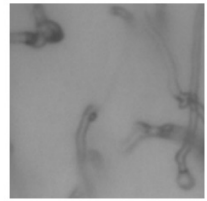
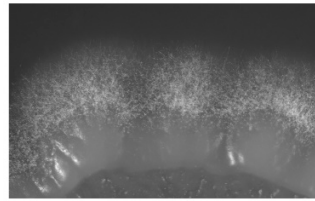
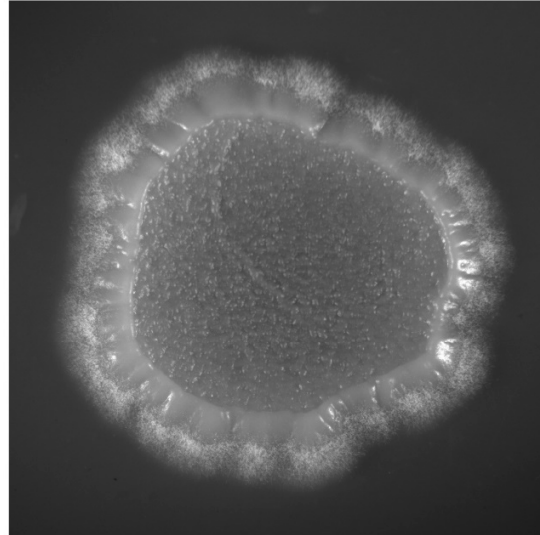


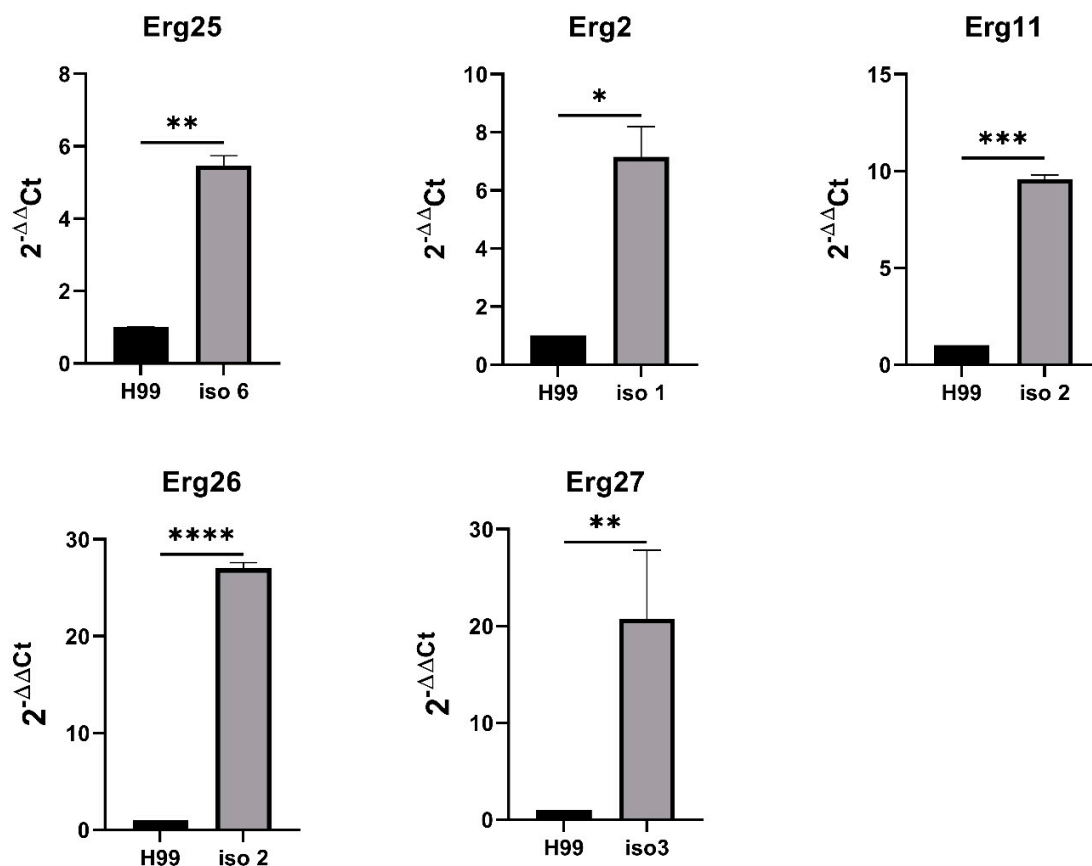
JEC21xJEC20



***sre1*ΔxJEC20**



Supplemental Figure S1: A wildtype serotype D cross (JEC21 α x JEC20 α) and a *sre1*Δ unilateral cross (*sre1*Δ α x JEC20 α) were spotted onto V8 pH=7 agar and incubated at 21°C in the dark for two weeks. The whole colony and colony edge were visualized by a stereoscope and basidia were visualized by light microscopy with a 10x objective. Scale bar = 10 μ m.



Supplemental Figure S2: RT-PCR data was generated by harvesting cells from overnight YPD cultures. Housekeeping gene *TEF1* was used as an internal control to ensure the quality of the original RNA sample used for cDNA amplification and for normalization. Error bars reflect the standard deviation. Student's t-test was used to assess statistical significance. *: $P \leq 0.05$, **: $P \leq 0.01$, ***: $P \leq 0.001$, ****: $P \leq 0.0001$.