

Supplementary information

The G β -like Protein *AfCpcB* is Required for Sexual Development, Response to Oxidative Stress and Phagocytosis by Alveolar Macrophages in *Aspergillus fumigatus*

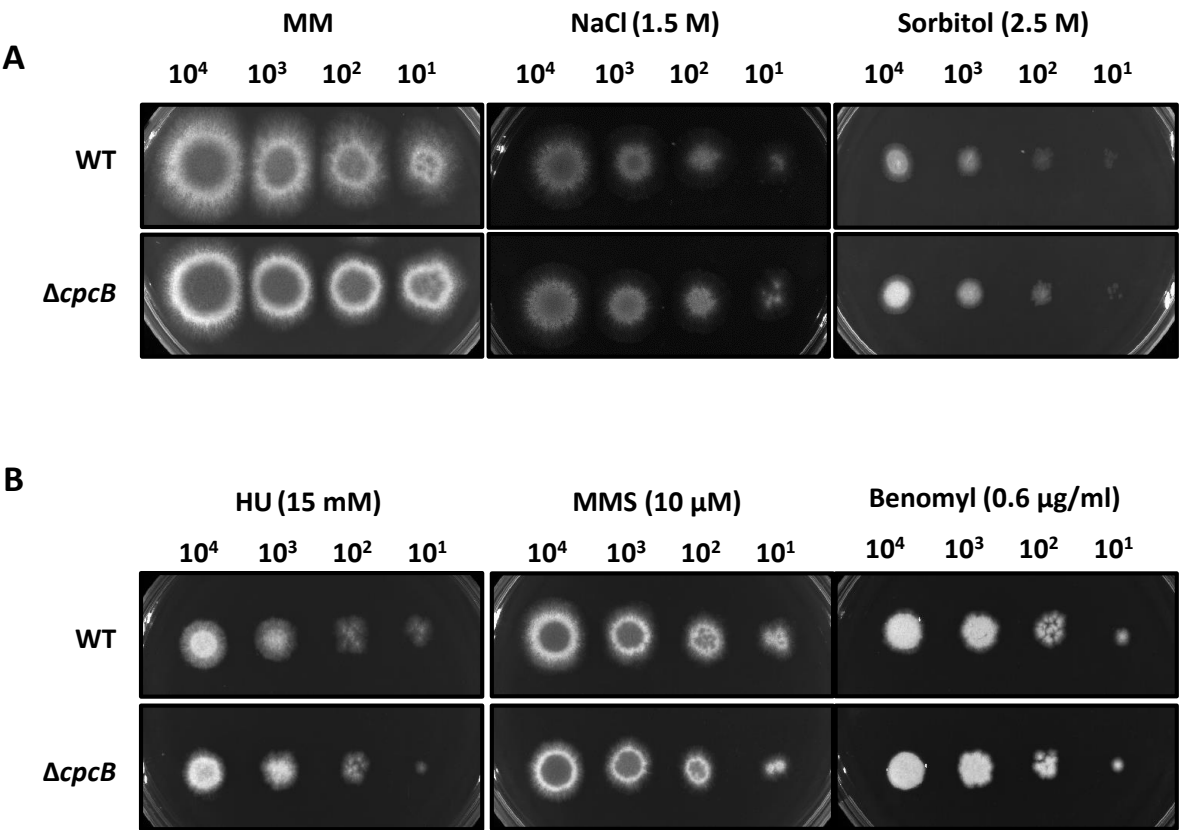
Joo-Yeon Lim, Yeon-Ju Kim and Hee-Moon Park*

Department of Microbiology and Molecular Biology,
College of Bioscience and Biotechnology,
Chungnam National University, Daejeon 34134, Korea

* To whom correspondence should be addressed.

Hee-Moon Park, Tel: 042-821-7553/ Fax : 042-822-7367, E-mail: hmpark@cnu.ac.kr

Supplementary Figure S1.



Supplementary Figure S1. Effects of *AfcpcB* disruption on sensitivity to osmotic and DNA replicative stresses. Conidia with 10-fold serial dilutions were spotted onto media and then, the plates were cultured at 37°C for 2 days. (A) Sensitivity of the strains to osmotic stresses (1.5 M NaCl and 2.5 M sorbitol). (B) Sensitivity of the strains to DNA replicative stresses (15 mM HU, 10 μM MMS and 0.6 μg/ml of benomyl). HU, hydroxyurea; MMS, methyl methanesulfonate.