

**Table S1. Categories of biofilm forming *C. albicans* isolates.**

| Biofilm forming ability  | OD values*                              |
|--------------------------|---|
| Non-biofilm forming      | $OD \leq OD_c$                          |
| Weak biofilm forming     | $OD > OD_c \leq 2 \times OD_c$          |
| Moderate biofilm-forming | $OD > 2 \times OD_c \leq 4 \times OD_c$ |
| Strong biofilm-forming   | $OD > 4 \times OD_c$                    |

\*cut-off OD (OD<sub>c</sub>) is the mean OD of the negative control (SDB only without fungi) plus three times standard deviations (SD).

**Table S2. Sequences of primer used in qRT-PCR *in vitro*.**

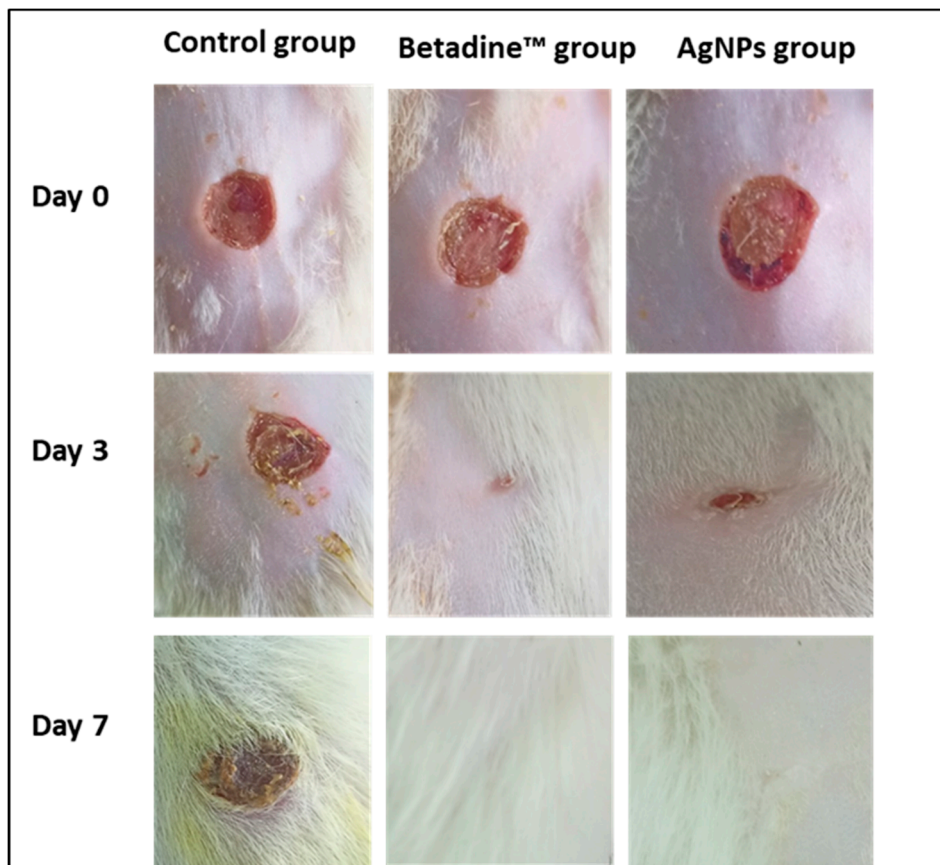
| Gene name                    | Sequence 5'- 3'  |
|------------------------------|--|
| <i>ACT1</i> (reference gene) | F- TTTCATCTTCTGTATCAGAGGAACTTAT<br>R- ATGGGATGAATCATCAAACAAGAG |
| <i>BCR1</i>                  | F- AATGCCTGCAGGTTATTTGG<br>R- TTTTAGGTGGTGGTGGCAAT             |
| <i>PLB2</i>                  | F- TGAACCTTTGGGCGACAAC<br>R- GCCGCGCTCGTTGTAA                  |
| <i>ALS1</i>                  | F- CAACAGGCACCTCAGCATCTAC<br>R- CTCCACCAGTAACAGATCCACTAGTAA    |
| <i>SAP5</i>                  | F- CCAGCATCTTCCCGCACTT<br>R- GCGTAAGAACCGTCACCATATTAA          |

**Table S3. Sequences of primers utilized in qRT-PCR *in vivo*.**

| Primer             | Sequence  |
|--------------------|---|
| <b>GAPDH</b>       | F 5'-CAGCAATGCATCCTGCAC-3'<br>R 5'-GAGTTGCTGTTGAAGTCACAGG-3'    |
| <b>Fibronectin</b> | F 5'-GAGCTATCCATTTACCTTCAGA-3'<br>R 5'-TTGTTCGTAGACACTGGAGAC-3' |
| <b>PDGF</b>        | F 5'-TGCCAGAGCCTGCTCTTAAC-3'<br>R 5'-GATGCCACGGAGATAAGCGA-3'    |

**Table S4. Values of MICs of ELLE against the tested *C. albicans* clinical isolates.**

| Isolate code | MIC (µg/mL) | Isolate code | MIC (µg/mL) |
|--------------|-------------|--------------|-------------|
| C1           | 8           | C8           | 16          |
| C2           | 16          | C9           | 16          |
| C3           | 8           | C10          | 8           |
| C4           | 64          | C11          | 32          |
| C5           | 32          | C12          | 128         |
| C6           | 8           | C13          | 256         |
| C7           | 256         |              |             |



**Figure S1.** The wound healing process of the different groups on days 0, 3, and 7.