
Supplementary figures

> oBle

atgggaatgacagatcaggccaccctaatttccaagtagagactttgatccaactgcagccttttacgagcgtttggggtttggtatagtgtccgtgacgctgggtggatg
atacttcagcgtggggattaatgcttgagttcttctcatcctggacttgaccattagcttctggttctcctgtttgctgttgcgatttgccgaattttacagacaatgt
aagagtgtcggaaatacaggaaacttctctggttatcctagaatacacgctcctgagttgcaagagtgggggggaacaatggctgctttagtagatcctgacggaactttatt
acgtcttatccagaatgaacttcttcaggaataatcttga

> oHyg

atgggaaagaacctaacttactgcaacatccgtcgaaaagttttaattgagaatttgatagtgtgtccgaccttatgcaacttagtgaaggagaagagtcaagagctttt
agttttgatgtaggaggacgttggttatgtcttgagagtcaatagtgtgcagatggatttacaaggatcggtatgtctatcgtcatttcgctccgccccttaccaatccctgaa
gtcttagacataggggagttctcagagtccttaacttactgcataatccgtagagcacaaggagtactcttcaggacttgccagagacagaattacctgcccgtcttcagccag
ttgccgaggcaatggacgctatagccgtgcagacttatccaaactagtggattcgggccatttggctctcaaggaaatgggcaataatactacatggcgtgatttcatctgcg
caatagcagaccctcatgtctaccattggcagaccgtaatggacgatactgtatccgcttctgtggcacaagcacttgacgagttaatgttggggcagaggattgtccagaa
gtcagacatttgggtgcagctgattttgtagtaacaatgtgcttaccgacaatggctgtataaccgagtcacgattgggtcagaagctatgttcggggattcacagtagcag
gtagccaataatttttctggagaccttggcttgcagtgtgaacagcagaccgttacttgaacgtagacaccagaattagccgggtctccacgtttaagagcttatatgtt
gagaattggattagaccaactttatcaatctttagtcgatggaaatttcgacgatccgcttgggcccaaggtagatgcgacgccattgtcagaagtggagctggaactgtgg
ggcgtacccaaattgccgtagatcagccgcagtgtagacagacggatgcgtggaagtattagcagatagtgggaatcgtcgtccttccacacgtccaagccaaggaat
aa

> oKan

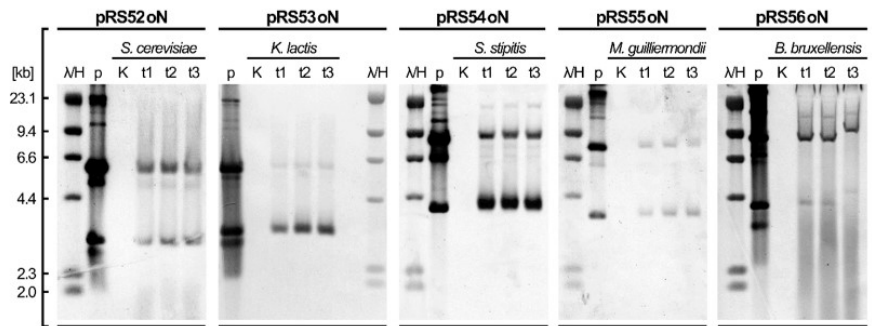
atgggtaaggagaagacacacgtgagtcgtccaagattgaacagtaacatggacgctgatttatacgggtataaatgggctcgtgataatgttgggtcagtcaggagccaca
atctatagattgtacggaagcctgacgccccagaattgttttgaagcatggttaagggttccgtcgccaatgatgttacagacgaaatgggtgagacttaattgggtgaccgag
ttcatgcctttacctacatcaaacacttcataagaacacctgacgacgcatggttacttacaacagctatccctggttaagactgattccaggttcttgaggagtatccagactca
gggtgagaacattgtcgatgccttagcagtggttctctctagattacattcaataccagtttgaattgcctttcaatttctgtagagtgttctgcttctcaagctcagtcctgtatg
aataatgggttgggtgagcttccgacttcgacgacgaacgtaacgggtggccagttgaacaagcttggaagaaatgcacaaattattaccattctcacctgattcagtggtg
actcacggtgatttctcattgacaatttgatattgatgaaggtaaatatagggtgcatagatgttgggagagtcggtatagccgaccgttaccaagatttagctattctttg
gaattgttgggggagttcagtccttcacttcagaacgtttatttcagaagtacggaatagacaatccagacatgaacaagttgcagtttacttaattgttgacgaatttttcta
a

> oNrs

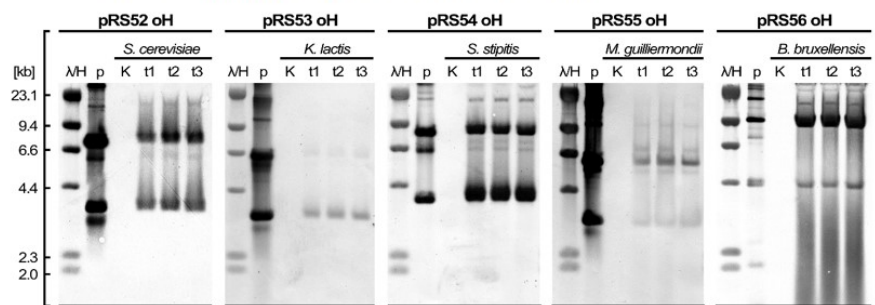
atggggaccacattagatgacaccgcataatcgttacgtacatccgtcccaggagacgccgaagctattgaggcacttgacggatcattcacaaccgacacagtattagagt
taccgtacagggtgatggattcaccttctgtgaggtgccagtagatccaccacttaccaaagtatttccagatgacgagagtgcagatgagagtgcagatggggaggacgg
agaccagactccagaacctttgtcgctatggagacgatggtgatttggctggttctcgtgtgtcttactcaggtggaacagacgtttaactgtggaggacatcgaagt
gtccagagcacagaggacatggggtaggacgtgcttaattgggattagctactgagttcgccgtgagcgtggagctggctcatttgggttgggaagtactaacgtgaac
gcactgccatacatgataccgtagaatgggattcactcttgtggtttagataccgcatgtgatgacggaaccgcatctgatggtgagcaagccttatatatgtctatgccatg
cccttaa

Supplementary Figure 1. Sequences of *de novo* synthesised ORFs encoding antibiotic resistance markers.

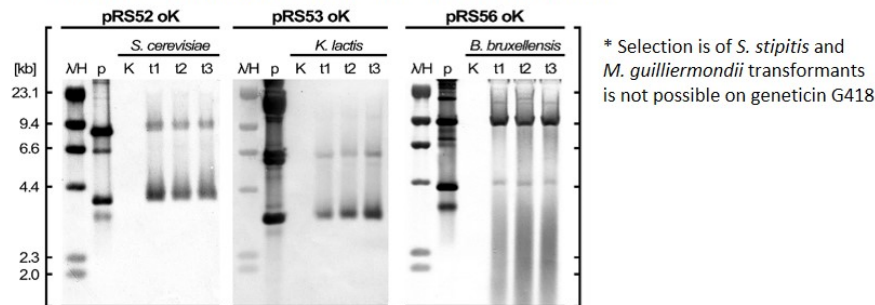
Plasmids carrying **cloNAT** resistance marker



Plasmids carrying **hygromycin B** resistance marker

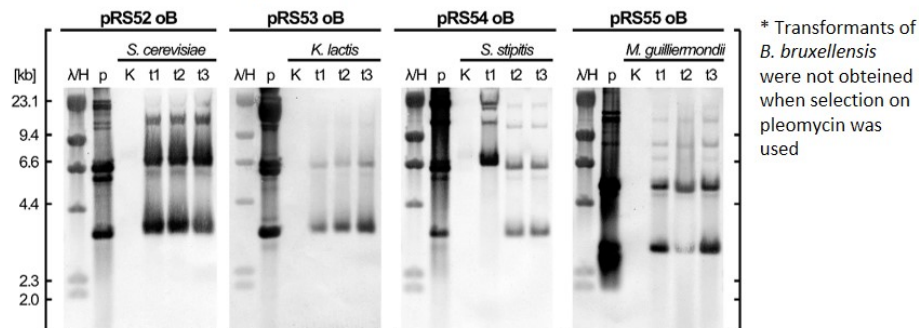


Plasmids carrying **geneticin G418** resistance marker



* Selection of *S. stipitis* and *M. guilliermondii* transformants is not possible on geneticin G418

Plasmids carrying **phleomycin** resistance marker



* Transformants of *B. bruxellensis* were not obtained when selection on phleomycin was used

Supplementary Figure 2. Genetic analysis of yeast transformants by Southern blot of the undigested genomic DNA, with digoxigenin-labelled probe hybridising to genes *bla* and *ori* present in the plasmid backbones. Each of the membranes focuses on the combination of one yeast species (columns) and its replicative plasmids conferring resistance to cloNAT, hygromycin B, G418, or phleomycin (rows). λ/H = marker (phage λ DNA digested with HindIII), p = replicative plasmid isolated from *E. coli*, K = untransformed yeast strain, t1-t3 = three yeast transformants.