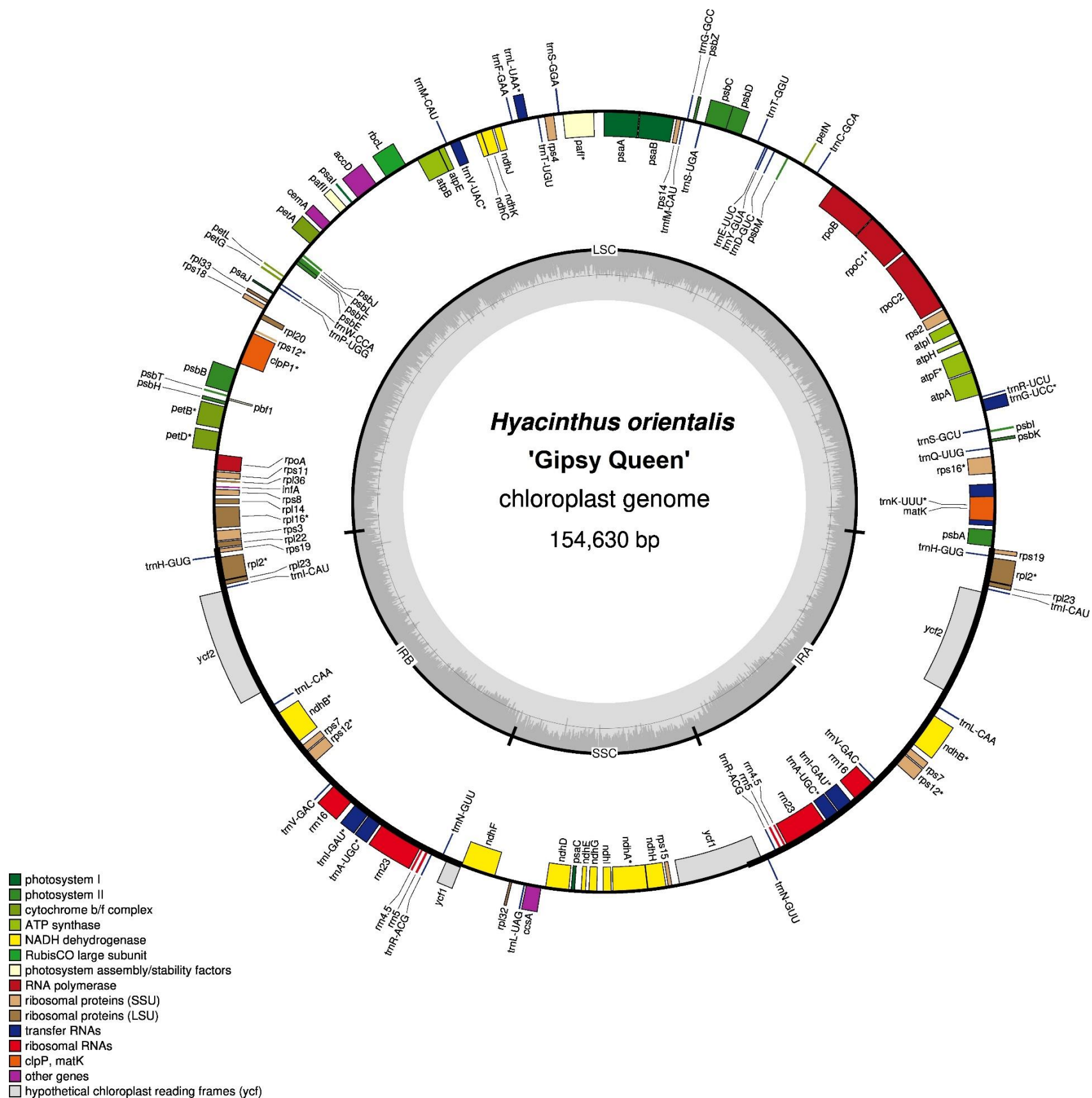
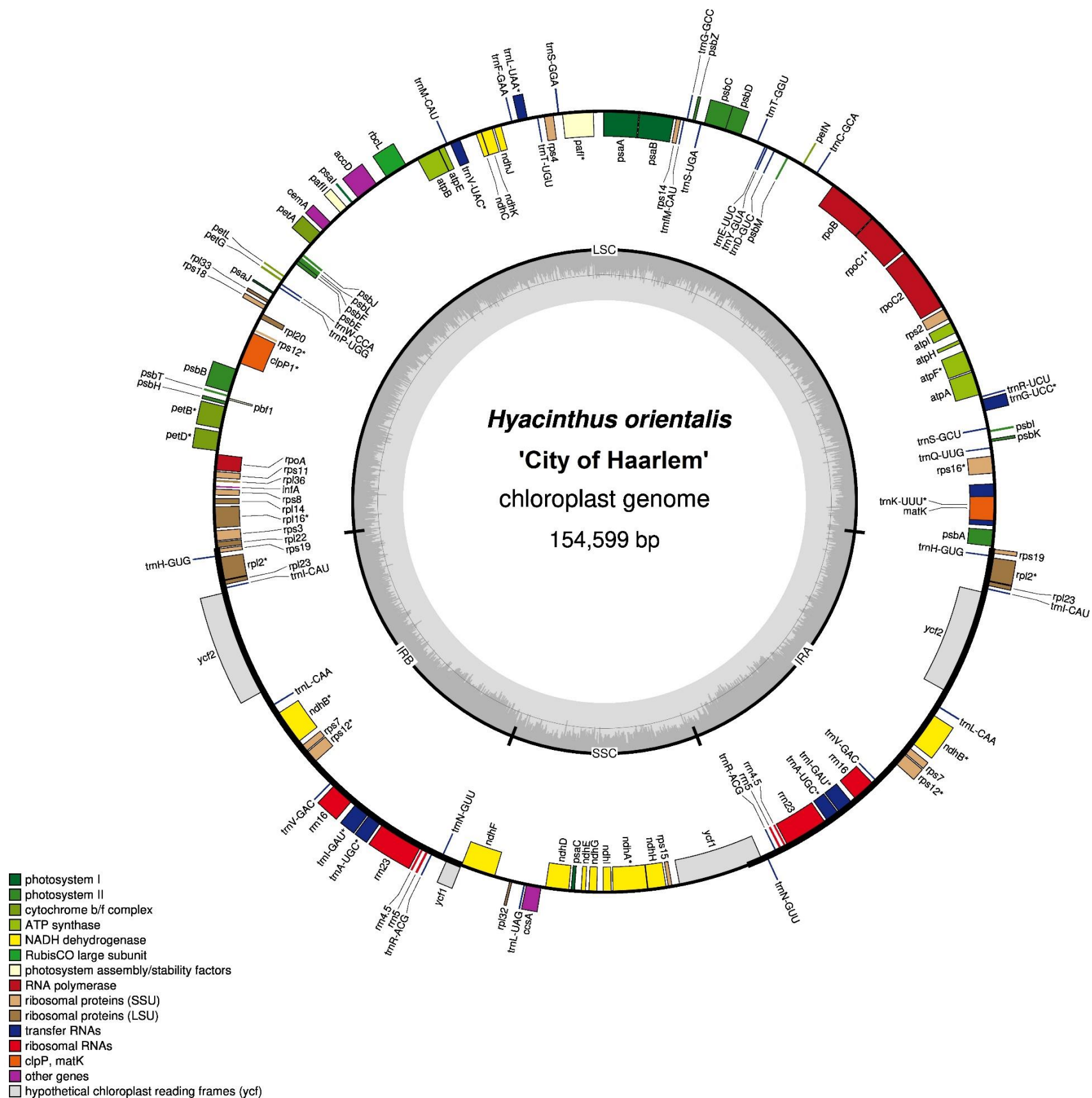
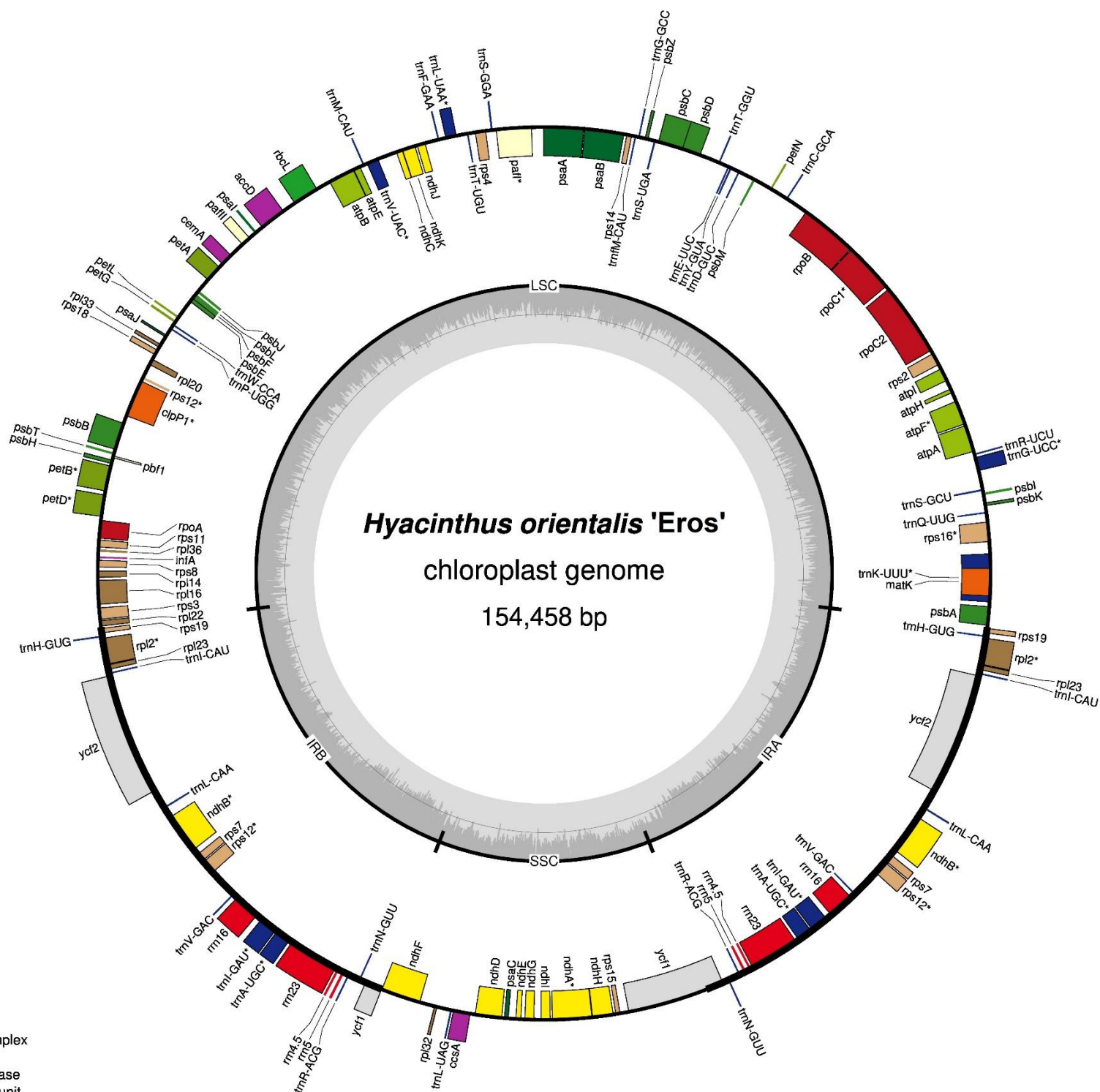


Figure S3 – Circular genome maps of all studied specimens





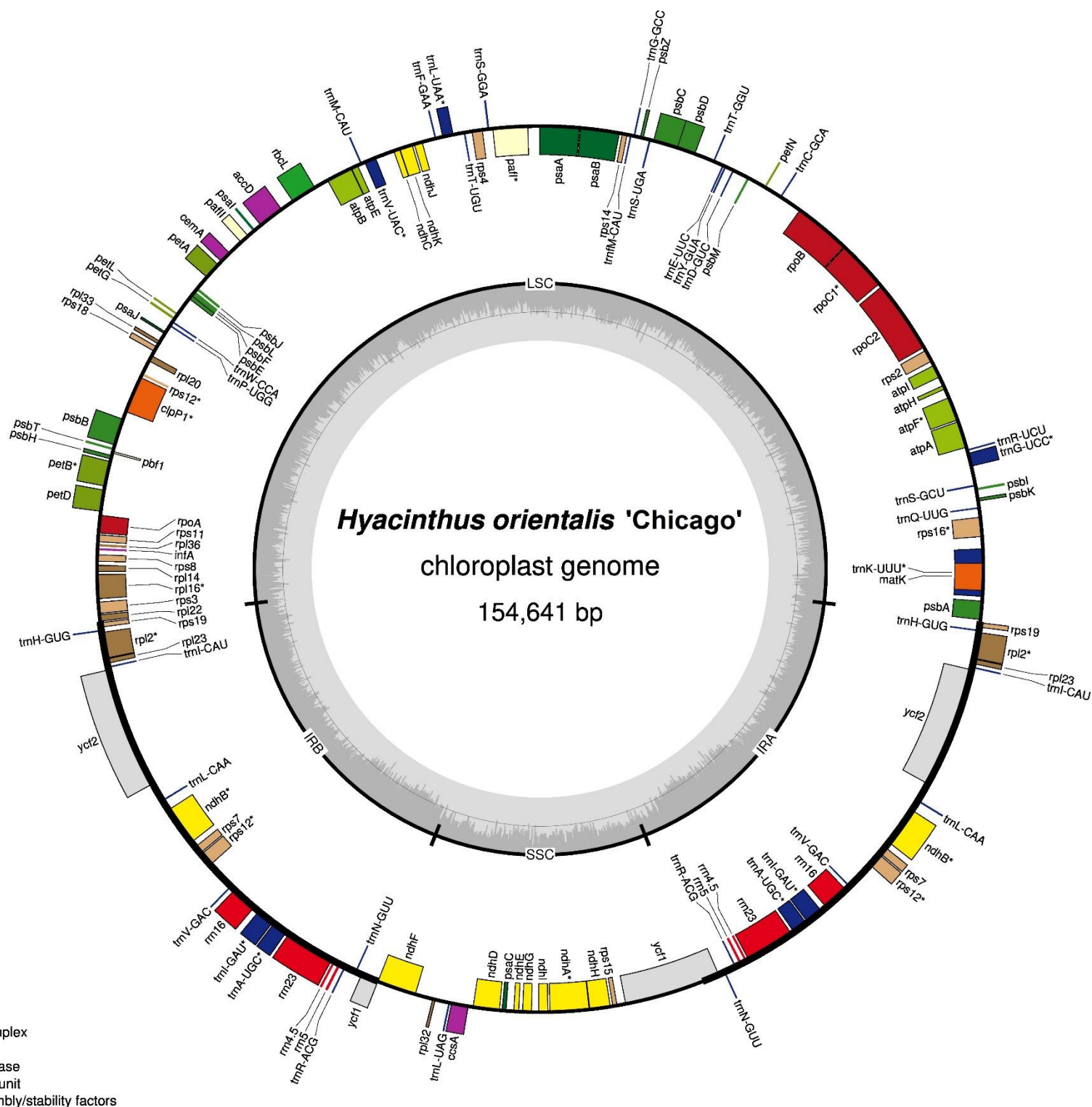


***Hyacinthus orientalis* 'Eros'**

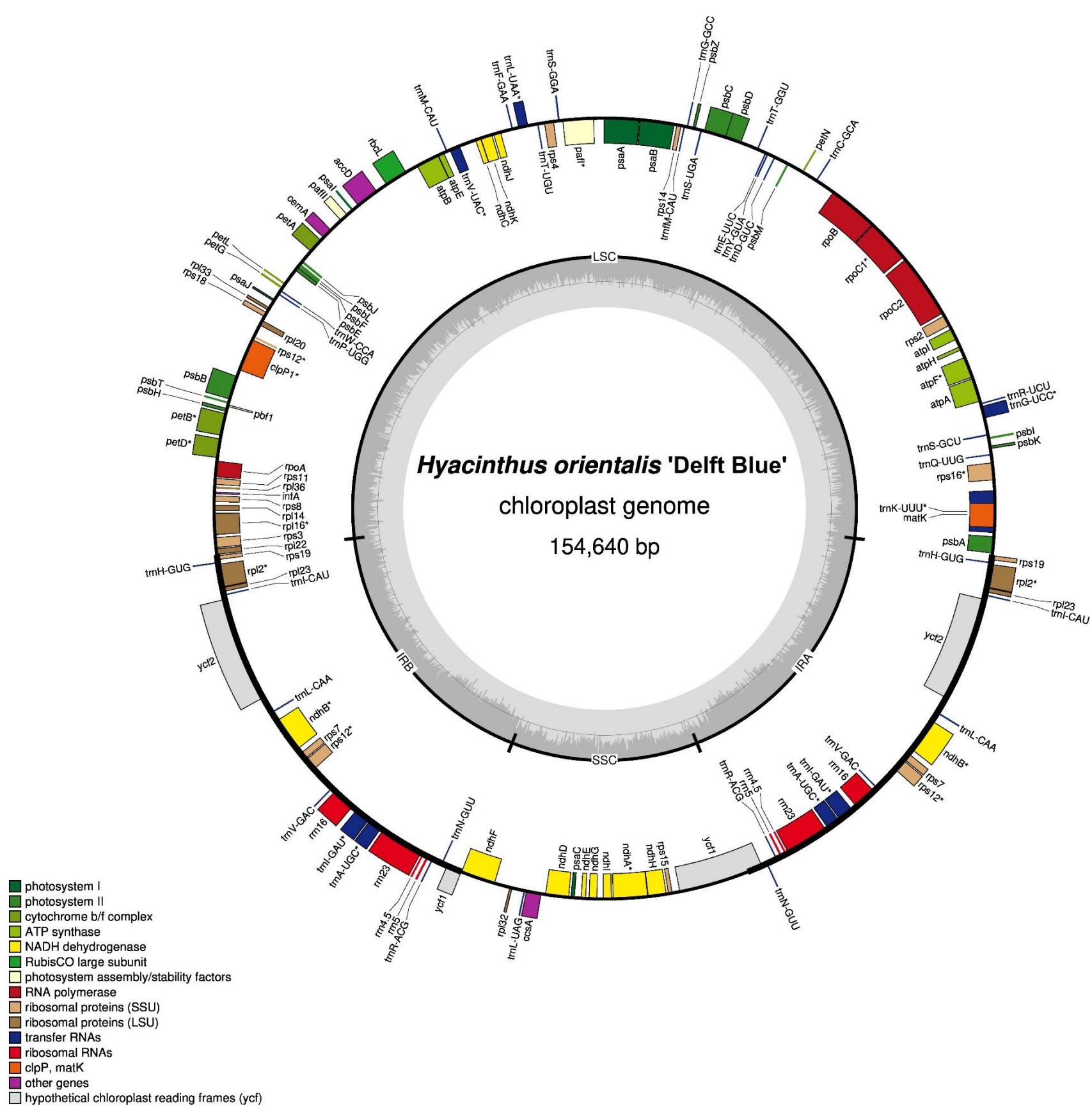
chloroplast genome

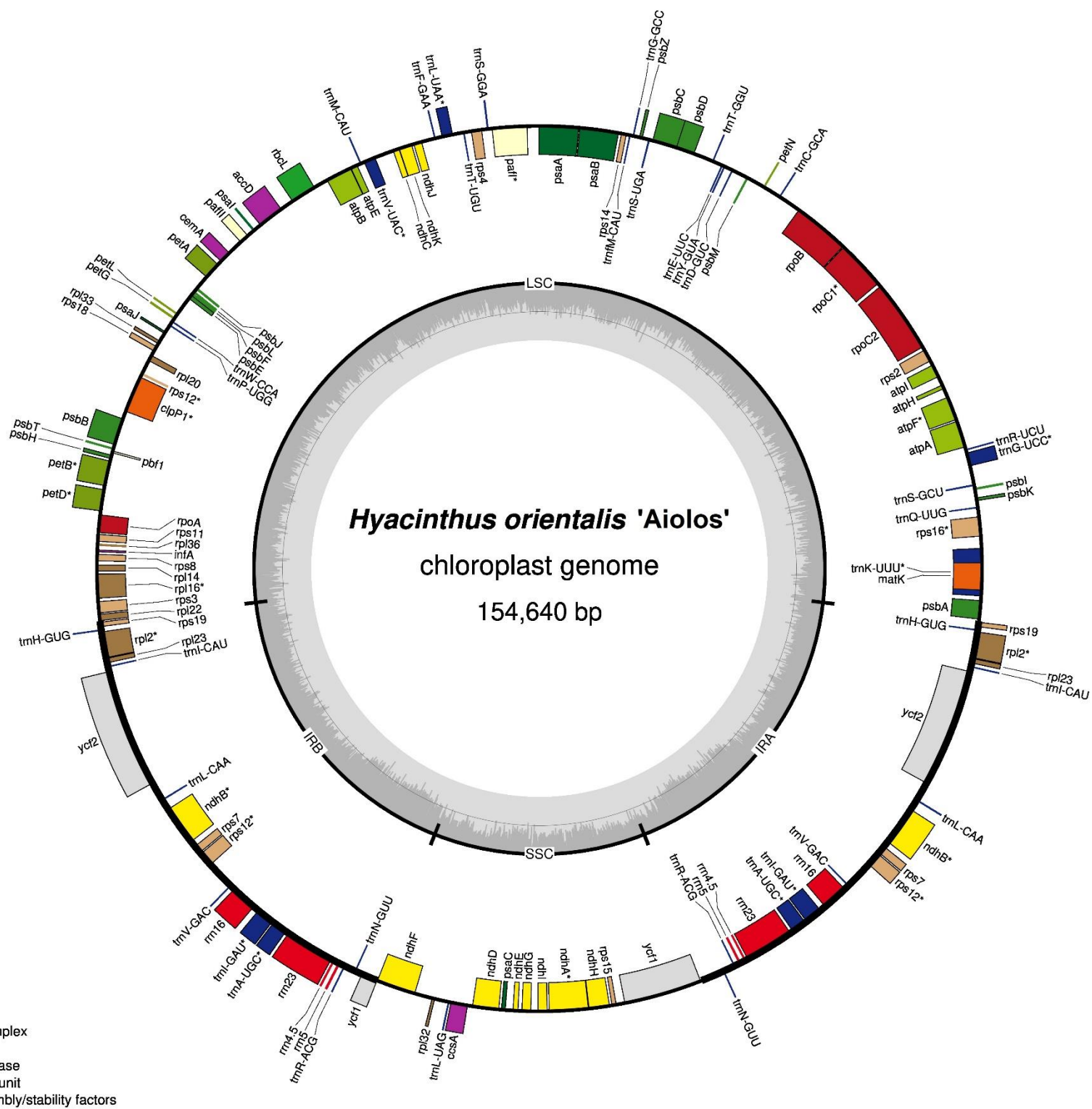
154,458 bp

- photosystem I
- photosystem II
- cytochrome b/f complex
- ATP synthase
- NADH dehydrogenase
- RubisCO large subunit
- photosystem assembly/stability factors
- RNA polymerase
- ribosomal proteins (SSU)
- ribosomal proteins (LSU)
- transfer RNAs
- ribosomal RNAs
- clpP, matK
- other genes
- hypothetical chloroplast reading frames (ycf)



- photosystem I
- photosystem II
- cytochrome b/f complex
- ATP synthase
- NADH dehydrogenase
- RubisCO large subunit
- photosystem assembly/stability factors
- RNA polymerase
- ribosomal proteins (SSU)
- ribosomal proteins (LSU)
- transfer RNAs
- ribosomal RNAs
- clpP, matK
- other genes
- hypothetical chloroplast reading frames (ycf)





- photosystem I
- photosystem II
- cytochrome b/f complex
- ATP synthase
- NADH dehydrogenase
- RubisCO large subunit
- photosystem assembly/stability factors
- RNA polymerase
- ribosomal proteins (SSU)
- ribosomal proteins (LSU)
- transfer RNAs
- ribosomal RNAs
- clpP, matK
- other genes
- hypothetical chloroplast reading frames (ycf)

