

Supplementary Material

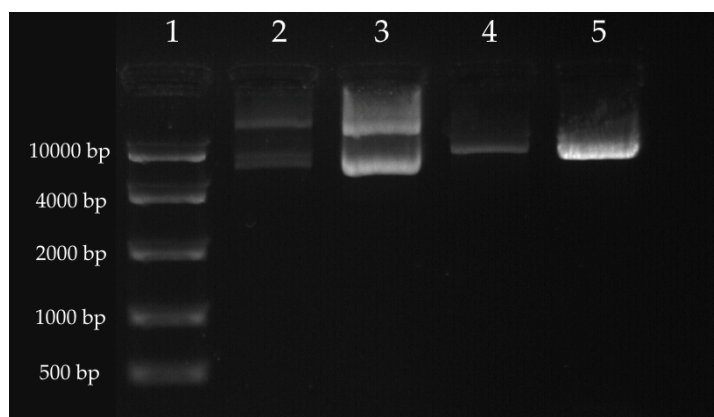


Figure S1. Comparative analysis of isolated plasmid DNA using agarose gel electrophoresis.

1. FastRuler High Range DNA ladders, ready-to-use;
2. Plasmid pLenti-CMV-EGFP Hygro (656-4) [8], extracted with K0481 kit, native;
3. Plasmid pLenti-CMV-EGFP Hygro (656-4) [8], extracted by the method described in the article, native;
4. Plasmid pLenti-CMV-EGFP Hygro (656-4) [8], extracted with K0481 kit, restricted with BamHI (FD0055);
5. Plasmid pLenti-CMV-EGFP Hygro (656-4) [8], extracted by the method described in the article, restricted with BamHI (FD0055).

The attached file also contains a table in Excel format, which shows the calculations of the cost of isolating plasmid DNA by the proposed method and comparison with the cost of isolating DNA by a number of commercial kits (links are given in the Table S1). The prices indicated in the table are valid as of September 25, 2020. Prices for one supplier may also differ depending on the region of sale. For the Dia-M website (www.dia-m.ru), the prices were relevant for the Russian region. For the Sigma Aldrich (www.sigmaaldrich.com/) website, the prices were relevant for the US region.

As for the remuneration of employees when performing DNA extraction using the proposed method and kits, these values can vary greatly. This may vary by country, place of work and employee qualifications. For comparison, we present the average salary of a postdoc in our laboratory (\$15,000) and in the USA (\$47,500) (<https://www.nature.com/articles/d41586-019-00587-y>) per year. Based on the approximate number of working hours (1950 h), we can calculate the cost of an employee's work per hour. In Russia it will be approximately (\$7,7 per hour) and in the USA it will be approximately \$24,3 per hour.