

SUPPLEMENTARY INFORMANTION

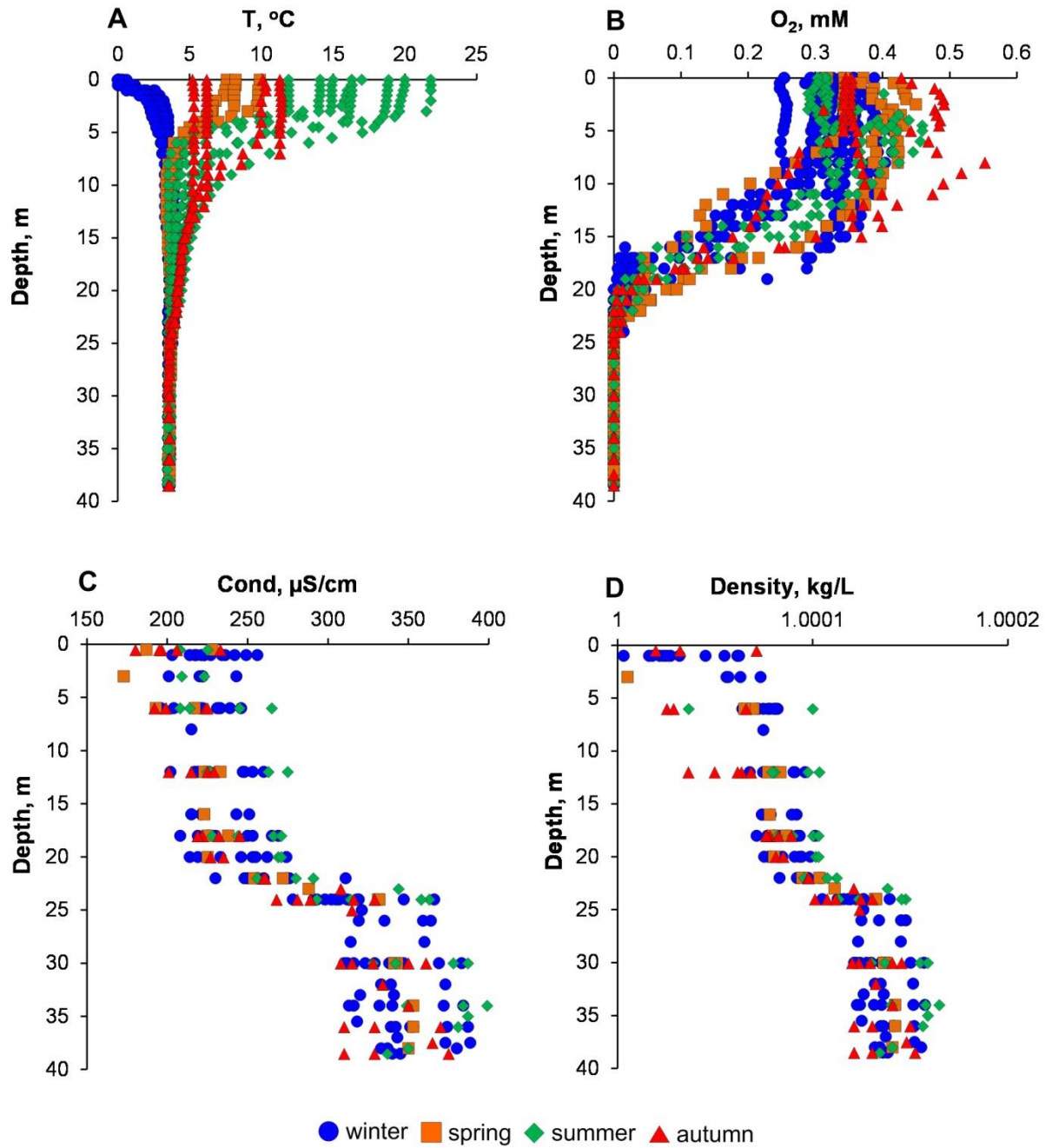


Figure S1. Vertical and seasonal variability of values of temperature (A), oxygen concentration (B), specific electrical conductivity (C) and density (D). Density values are based on conductivity and temperature values. Density values less than 1 were observed for horizons of 0–6 meters in summer and autumn.

0–5	0.1	3.3	0.00	0.06	3	11	4	12	1	18	10	27	302	317	7.8	7.9	14.1	20.0
	0.7		0.00		6		6		8		13		317		7.8		16.3	
5–10	0.4	0.8	0.00	0.07	4	13	5	14	6	7	10	15	307	456	7.4	8.0	4.1	9.4
	0.7		0.01		8		9		7		11		403		7.6		6.1	
10–15	0.2	0.8	0.00	0.04	2	6	3	6	4	6	7	24	264	339	7.2	7.8	3.5	4.5
	0.6		0.02		5		6		4		10		302		7.3		3.9	
15–20	0.4	1.4	0.000	0.10	2	12	3	13	3	43	9	46	6	127	6.8	7.6	3.6	4.0
	0.7		0.01		6		7		7		12		43		7.0		3.9	
20–25	4	112	0.2	1.5	3	10	9	123	15	107	24	184	0	13	7.0	7.7	3.5	4.0
	78		0.6		7		85		45		119		0		7.1		3.7	
25–30	119	190	0.5	1.8	5	15	163	197	88	246	199	298	0	0	6.8	7.2	3.5	3.7
	153		0.9		10		167		101		262		0		7.0		3.6	
30–35	163	195	0.7	1.8	5	14	176	201	43	260	244	274	0	0	6.9	7.2	3.6	3.7
	195		1.3		8		201		151		259		0		7.0		3.6	
35–bott.	130	193	0.4	1.7	5	14	184	198	42	250	180	276	0	0	6.7	7.3	3.5	3.7
	175		0.8		10		190		146		252		0		7.0		3.6	
Autumn (September – October)																		
0–5	0.8	3.5	0.00	0.11	2	12	4	13	3	13	12	18	344	443	7.0	8.8	5.3	11.3
	1.5		0.05		5		8		7		16		354		7.8		8.3	
5–10	0.7	2.0	0.00	0.11	2	7	3	9	8	11	12	18	319	468	7.3	8.8	5.3	11.3
	1.0		0.07		3		4		10		15		361		7.9		8.0	
10–15	0.5	1.5	0.00	0.11	4	9	5	10	3	10	9	38	224	422	7.3	8.2	5.2	6.0
	0.8		0.07		5		6		7		13		372		7.8		5.3	
15–20	0.3	1.6	0.00	0.10	3	12	4	13	4	16	9	27	4	106	6.7	7.7	4.2	4.4
	1.0		0.08		4		6		6		10		91		7.4		4.3	
20–25	1	95	0.0	1.2	3	13	4	105	15	75	19	181	0	9	6.8	7.9	3.7	4.1
	77		0.6		8		87		30		125		0		7.5		3.7	
25–30	117	193	0.0	1.8	4	15	122	204	40	133	241	293	0	0	6.7	7.7	3.5	3.6
	145		0.5		11		158		109		245		0		7.3		3.6	
30–35	144	144	0.4	1.7	16	16	161	161	96	96	257	293	0	0	7.3	7.4	3.5	3.5
	144		1.0		16		161		96		275		0		7.4		3.5	
35–bott.	108	178	0.00	1.641	4	16	113	191	82	160	244	273	0	0	6.7	7.6	3.5	3.6
	152		0.52		12		166		91		263		0		7.3		3.6	