

Modelling the Implementation of a Sustainable Development Strategy through Process Mapping [†]

Ioana Miruna Tătaru *, Elena Fleacă, Bogdan Fleacă and Radu D. Stanciu

Department of Entrepreneurship and Management (DEM), Faculty of Entrepreneurship, Business Engineering and Management (FAIMA), University POLITEHNICA of Bucharest, 060042 București, Romania; elena.fleaca@upb.ro (E.F.); bogdan.fleaca@upb.ro (B.F.); radu.stanciu@upb.ro (R.D.S.)

* Correspondence: tataru.miruna@gmail.com

[†] Presented at the 14th International Conference on Interdisciplinarity in Engineering—INTER-ENG 2020, Târgu Mureș, Romania, 8–9 October 2020.

Published: 10 December 2020

Abstract: Industry 4.0 implies sustainable production by providing green products created through environmentally responsible processes. This paper aims to analyze the two main business processes responsible for energy innovation in a telecommunications company: “develop property strategy and long-term vision” and “evaluate environmental impact of products, services, and operations”. The processes will be introduced using an initial set of key-performance indicators (KPIs) and American Productivity & Quality Center (APQC) Process Classification Framework activities. Through value stream analysis, the non-value-added activities will be eliminated. Ultimately, to provide an overview for the stakeholders, a new set of KPIs will be proposed and the processes will be modeled using Event-Driven Process Chain (EPC) and Suppliers-Inputs-Process-Outputs-Customers (SIPOC) methods.

Keywords: sustainable development strategy; energy innovation; telecommunications; business process; event-driven process method; value stream analysis; Industry 4.0

1. Introduction

Sustainability, lean manufacturing, and Industry 4.0 are important concerns nowadays.

The concept of sustainability has been developed as a solution to the ecological crisis caused by the intense exploitation of resources and the continuous degradation of the environment. Sustainable development is defined as “development that meets the needs of the present without compromising the ability of future generations to meet their own needs” [1].

Lean manufacturing implies reducing all activities that do not bring value for end customers. It is an ongoing effort to eliminate or reduce all waste in design, manufacturing, and distribution, ensuring quality improvement, reducing processing time and overall costs [2].

Industry 4.0 implies real-time connectivity between suppliers, departments, machines and products, and it aims to revolutionize all industries in terms of technology, business processing and digitalization [2].

Research shows that Industry 4.0 has made the public aware of the challenges present in the Triple Bottom Line, which covers the three pillars of sustainability: economic, environmental and social [3].

Lean manufacturing will decrease energy consumption of non-renewable energies and industrial waste and increase interest in renewable energy and the collaboration between environmentally responsible companies [3].

Cyber-Physical Systems (CPS) introduced by Industry 4.0 will digitalize the relations between suppliers, producers and consumers, creating a smart manufacturing process. This transformation

will lead to an increase in productivity, reducing industrial costs (i.e., production, logistic, quality management), providing better quality of products and reducing errors [3].

Industry 4.0 will lead to a decrease in energy consumption and waste reduction through optimization of logistics and warehousing [3,4].

The Industry 4.0 technological framework consists of the Internet of Things (IoT) and Internet of Services (IoS), which connect the industry through their supply chain network [5].

Research shows that the IoT might have a positive impact on the environment by increasing collaboration with partners that follow good environmental practices and decreasing resource consumption [2].

On the other hand, another research shows that the IoT might increase the demand for massive data centers, which would lead to an increased energy flow. Automation and digitalization might have a negative impact on the environment as it might lead to increased equipment demand, which would increase raw material flow, energy flow and fuel flow in their manufacturing [5]. Digitization and integration would lead to more raw materials and energy required, as well as the disposal or recycling of outdated equipment [6].

The telecommunications industry (i.e., ITC) ensures the communication framework for Industry 4.0, the network and the inter-connection between Internet of Things devices, and therefore their sustainability practices and efforts to create sustainable business processes are objects of concern.

On the European market, the main telecommunications competitors, their revenue, digital programs and climate change actions are explored by the European Telecommunications Network Operation's Association [7].

In this paper, sustainable development data will be used to measure business processes and give examples of programs and initiatives developed by Vodafone (primarily, as their annual report contains a data sheet with useful information), Telekom and Orange.

Previous research addressed sustainability in supply chain systems and proposed a decisional model for evaluating suppliers, under the following criteria: environmental (green corporate social image, environmental management system), social (work safety and labor health) and economic (cost, quality, service) sustainability [8].

Another study extends the Business Process Management concept, focusing on optimizing costs, quality, time and flexibility of the business process with the Green Business Process Management (BPM) concept, which focuses on the environmental consequences of business processes. Green BPM implies reducing greenhouse gas emissions and energy consumption as optimization objectives for business processes [9].

Although there are a multitude of studies on business process in the literature, they cover either other production industries, lean manufacturing, or are focused on certain types of business processes (Green BPM). The processes that will be analyzed in this study are not addressed in the literature.

In the context of Industry 4.0, this study might be relevant to companies operating in the ITC industry thanks to the provided values stream analysis, which may give valuable insights to the implementation of sustainable development strategies and related processes key-performance indicators (KPIs).

2. Research Methodology and Input Data

2.1. Categories of Business Processes

A first step is to identify the input data, meaning the business processes responsible for the sustainable development strategy. The Process Classification Framework (PCF) from APQC in a telecommunications company will be used as a methodology [10].

Developing sustainable, innovative products and solutions that help customers save energy implies conducting business processes from the C2, C3 and C4 categories. A sustainable office uses renewable energy, has intelligent lighting or heating systems, with business processes from the C9 category being responsible from creating it. To drive energy innovation, environmental, health and

safety programs should be put in place, and the business processes responsible for creating them are from the C10 category. A sustainable development strategy cannot be achieved without the support of governments, non-governmental organizations and the mass media, and the responsible processes reside in the C11 category. The C13 category is responsible for the adaptation of technology centers.

2.2. Groups of Business Processes

The next step is to identify programs implemented by the studied organizations that are directly correlated with the APQC groups of business processes [10]. In Table 1, the following notation will be used P(category_number).(process_number) Group of processes. The programs are extracted from the Corporate Social Responsibility (CSR) reports of the targeted companies [11–13].

For each group of processes, the authors identified and extracted the data reported in the CSR reports and data sheets [12–14].

Table 1. Groups of business processes.

Programs Claimed in CSR Reports	APQC Process	Process Data	APQC Category Number
Smart City Alba Iulia (Orange), Smart City Piatra Neamt (Telekom)	P2.2: Develop products and services	Purchased goods and services: 4.000.000 tonnes CO ₂ (Vodafone)	C2
Supplier Performance Management Program (Vodafone), Supplier Code of Conduct (Telekom)	P4.8: Develop and manage supply chain	-	C4
Code of Ethical Purchasing (Vodafone), Certification in responsible purchasing (Orange)	P9.1: Design and construct/acquire non-productive assets	Energy consumed (GWh): 5582 (Vodafone) Energy consumed (GWh): 9928 (Orange)	C9
Regular company audits (PwC audits for Telekom, JAC audits for Vodafone)	P10.1: Determine health, safety, and environment impacts	3% reduction (Vodafone) 2% emission (Telekom)	C10
	P10.5: Ensure compliance with regulations	JAC audits for suppliers: 79, Vodafone audits for suppliers: 6, Number of stations evaluated using employee questionnaires: 12 (Vodafone)	
#RedLovesGreen, thrive (Vodafone) Certification OHSAS 18001:2007, Employees Forum, Plaza Hobbies Community (Orange), HSE Management System (Telekom)	P10.2: Develop and execute health, safety, and environmental program	90% of employees completed the Code of Conduct training (Vodafone)	
	P10.3: Train and educate employees		
	P10.4: Monitor and manage health, safety, and environmental management program		
Regular company audits	P10.6: Manage remediation efforts	Quarterly verification by JAC (Vodafone)	C11
GRI G4 Reporting	P11.2: Manage government and industry relationships	GRI Reports (Vodafone, Orange)	
Conflict Materials Report (Vodafone), Ethical code (Orange)	P11.4: Manage legal and ethical issues	90% of employees completed the Code of Conduct training (Vodafone)	

The table above contains both measurable data, percentages of the impact or progress of the company towards sustainable development objectives and data that cannot be measured. Also, not all processes have substantial and direct action on the sustainable development strategy.

Using the data from the previous table, the most relevant processes are identified as follows:

P1: Develop property strategy and long-term vision;

P2: Evaluate environmental impact of products, services, and operations;

P3: Develop IoT products in accordance with the sustainable development strategy;

P4: Inform employees about the adoption of socially responsible behavior;

P5: Manage relations with government, quasi-government bodies, trade or industry groups.

Based on previous authors' experiences, the following processes has been selected to be analyzed through value stream mapping and modelled, being considered the most relevant for any company operating in the ITC industry and/or other socio-economic sectors:

P1: Develop property strategy and long-term vision;

P2: Evaluate environmental impact of products, services, and operations.

3. Mapping the Initial State of Business Processes and Value Stream Analysis

To improve business processes, it is necessary to know the initial state of the performance indicators. Different types of performance can be measured by key-performance indicators (KPIs), for example: energy, raw materials, control, operation [15]. The reason for low performance is waste in different forms, such as transport, inventory, movement, waiting, over processing, overproduction, and defects [16]. Waste does not add value to the product as defined by the customer [17]. From a lean perspective, each activity is classified as an activity that brings value (VA) or activity that brings no value (NVA). However, there are some activities, called ENVA, that are perceived as NVA but may be necessary to the process.

The activities within the processes have been taken from the PCF and divided by their value-added and the justification for their categorization [10].

Table 2 presents the initial state of the P1 process: "develop property strategy and long-term vision". The responsible units are Procurement department and Financial department.

Table 2. P1 process-initial state.

No.	Activity	KPI	Value	Justification
A1.1	Confirm alignment of property requirements with business strategy	Requirements list completed 70%	VA	Prevents repetition of next activities
A1.2	Assess the external environment	External environment analysis completed 70%	VA	Necessary for the smooth process execution
A1.3	Analyze the budget for acquiring/renting properties	Financial analysis completed 70%	NVA	Can be carried out along with the decision-making activity
A1.4	Determine build or buy decision for properties	Decision document completed 100%	VA	Decision to take
A1.5	Analyze requirements for workspace assets	Requirements list completed 70%	ENVA	To learn how to create "an environmentally responsible business"
A1.6	Analyze the budget for acquiring/renting workspace assets	Financial analysis document completed 70%	NVA	Can be carried out along with the decision-making activity
A1.7	Determine build or buy decision for assets	Decision document completed 100%	VA	Decision to take
A1.8	Analysis and evaluation	Lists analyzed and completed 90%	ENVA	Alignment and prevents repetition of next activities
A1.9	Improve the organization's sustainable development strategy	Sustainable development strategy completed 90%	ENVA	To include the property strategy

Table 3 provides the initial state of the P2 process: “evaluate environmental impact of products, services, and operations”. To exemplify, Vodafone reported a 3% emission reduction [11], whereas Telekom reported a 2% emission reduction [13]. Each company can set their own KPI. The responsible unit for the process activities is the CSR department.

Table 3. P2 process-initial state.

No.	Activity	KPI	Value	Justification
A2.1	Evaluate environmental impact of products, services, and operations	Emission reduction by 3%	VA	Prevents repetition of next activities
A2.2	Conduct health and safety and environmental audits	Renewable energy use 15%	NVA	To identify the regulations
A2.3	Identify regulatory and stakeholder requirements	Regulatory document completed 80%	NVA	To avoid repetition of activities
A2.4	Assess future risks and opportunities	List of risks completed 80%	VA	Necessary for the next activity
A2.5	Create emergency response program	Emergency plan completed 80%	VA	The result is the basis for the CSR plan
A2.6	Create pollution prevention program	Prevention plan completed 80%	VA	The result is the basis for the CSR plan
A2.7	Create health, safety, and environmental (EHS) program	EHS plan completed 80%	VA	The result is the social responsibility program-the purpose of this process
A2.8	Implement EHS program	Success rate 80%	VA	To implement the CSR program
A2.9	Record and manage EHS events	Database completed 80%	VA	To report CSR results
A2.10	Analyze EHS information	Analysis document completed 90%	NVA	The data can be analyzed in relation to the cost and benefit of implementing the program
A2.11	Perform cost-benefit analysis	Favorable cost-benefit ratio 70%	VA	To evaluate the progress
A2.12	Monitor compliance with regulations	Compliance rate 90%	VA	To ensure compliance with regulations
A2.13	Manage remediation efforts	Corrections applied 90%	VA	Activity required only if the company is not compliant
A2.14	Report social responsibility performance	Annual report delivered 100%	VA	To evaluate the progress from year to year

4. Mapping the Future State of the Business Processes

To project the future status of the processes, NVA activities will be removed and new KPI values will be proposed. Each company can set their own KPIs. To exemplify, Telekom would like to achieve 100% renewable energy usage by 2021 [13], whereas Vodafone set the same goal for 2025 [11]. Vodafone would like to reduce 50% of their emissions by 2025 [11], and Telekom reported the objective to reduce by 25% from one year to another (2017 to 2018) [13].

Table 4 provides the future state of the P1 process: “develop property strategy and long-term vision”.

Table 4. P1 process-future state.

No.	Activity	KPI (Name)	KPI (Unit of Measurement)
A1.1	Confirm alignment of property requirements with business strategy	Requirements list completed	100%
A1.2	Assess the external environment	External environment analysis document completed	100%
A1.3	Determine decision for properties	Decision document completed	100%
A1.4	Analyze requirements for assets	Requirements list completed	100%
A1.5	Determine decision for assets	Decision document completed	100%
A1.6	Analysis and evaluation	Lists analyzed and completed	100%
A1.7	Improve the organization's sustainable development strategy	Sustainable development strategy completed	100%

Table 5 provides the future state of the P2 process: “evaluate environmental impact of products, services, and operations”.

Table 5. P2 process-future state.

No.	Activity	KPI (Name)	KPI (Unit of Measurement)
A2.1	Evaluate environmental impact of products, services, and operations	Emission reduction	50%
A2.2	Conduct health and safety and environmental audits	Renewable energy use	100%
A2.3	Identify regulatory and stakeholder requirements	Regulatory document completed	100%
A2.4	Assess future risks and opportunities	List of risks completed	100%
A2.5	Create emergency response program	Prevention plan completed	100%
A2.6	Create pollution prevention program	Prevention plan completed	100%
A2.7	Create health, safety, and environmental (EHS) program	EHS plan completed	100%
A2.8	Implement EHS program	Success rate	100%
A2.9	Record and manage EHS events	Database completed	100%
A2.10	Perform cost-benefit analysis	Cost-benefit ratio	100%
A2.11	Monitor compliance with regulations	Compliance rate	100%
A2.12	Manage remediation efforts	Corrections applied	100%
A2.13	Report social responsibility performance	Annual report delivered	100%

5. Modelling the Business Processes

To provide a view of the processes needed to be managed to achieve energy innovation, Suppliers-Inputs-Process-Outputs-Customers (SIPOC) and Event-Driven Process Chain (EPC) methods are used. SIPOC is a graphical process representation method outlining the entities that provide the necessary data for the execution of the organizational process (Supplier), the data needed for process execution (Input data), the sequence of activities (Process), the results of the process execution (Output), and the entities that use the result (Customer) [18–20].

To provide a strategical view of organizational processes for stakeholders, the sequence of process activities will be represented using the EPC method [21].

For the “develop property strategy and long-term vision” (P1) process, the input data are:

- The Corporate Social Responsibility (CSR) strategy or the sustainable development strategy, available at management level and in CSR and Procurement departments.
- External data, such as rental offices information and sustainable office tools (cooling/heating devices, intelligent lighting, etc.), available through specialized agencies and market research.

The process execution will generate a corporate social responsibility report, updated with the property strategy and long-term vision, that will be used by Management, Procurement and in the “manage relations with government, quasi-government bodies, trade or industry groups” (P5) process. Figure 1 outlines the “develop property strategy and long-term vision” (P1) process.

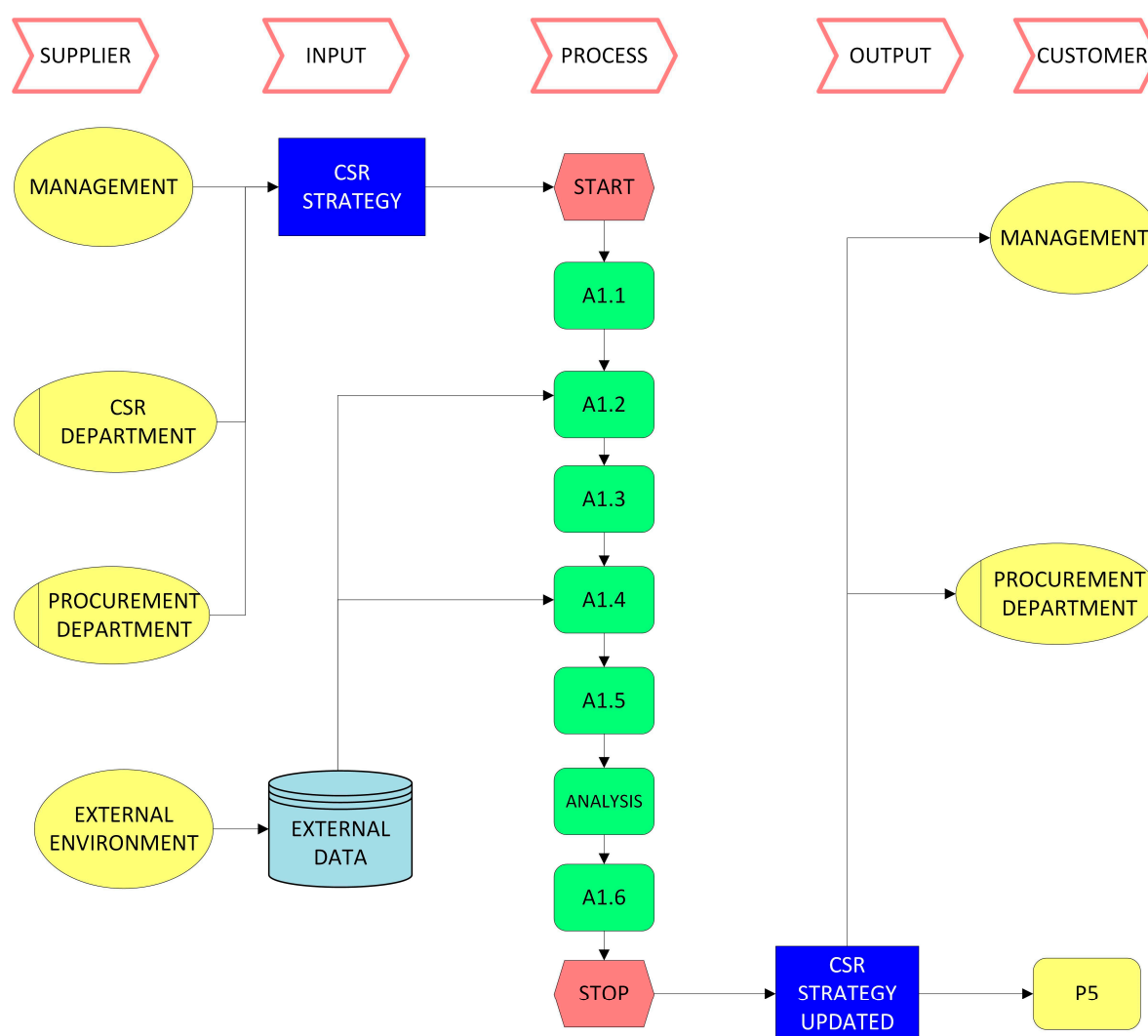


Figure 1. Future state for P1 process.

For the “Evaluate environmental impact of products, services, and operations” (P2) process, the input data are:

- External requirements—generated through market research and collaboration with specialized agencies. For example, an agency knows how to report social responsibility performance, the applicable rules and how the organization can create a favorable cost–benefit ratio by implementing environmental, health and safety measures.
- CSR impact requirements—measured by the CSR department and known by management.

The process execution will generate the CSR program, the updated CSR database, the cost–benefit report and the CSR report, which will be used by management and the CSR department, as well as being made public in the external environment and the “manage relations with government, quasi-government bodies, trade or industry groups” (P5) process. Figure 2 outlines the “evaluate environmental impact of products, services, and operations” (P2) process.

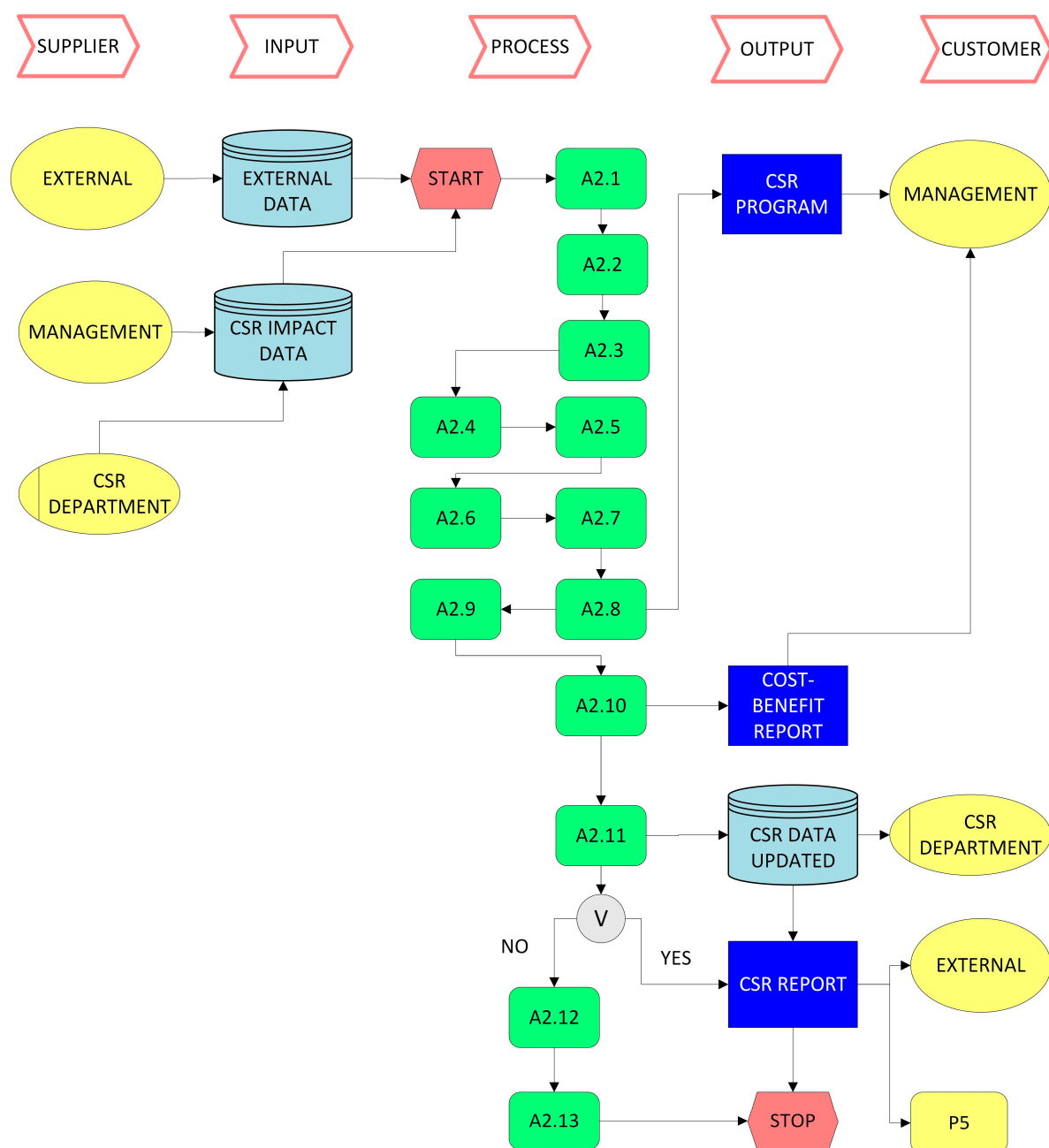


Figure 2. Future state for P2 process.

6. Conclusions

In the context of Industry 4.0, sustainable production implies environmentally responsible business processes. This paper, through problematic, approach and results, models the implementation of a sustainable development strategy through process mapping.

Despite numerous contributions to Industry 4.0, lean manufacturing and sustainability, there are few studies on business process modeling, and the two processes analyzed in this study are not addressed in the literature.

This paper addresses two business processes responsible for energy innovation, namely “develop property strategy and long-term vision” and “evaluate environmental impact of products, services, and operations”.

By mapping their initial state with an initial set of KPIs, the authors discovered that some activities can be eliminated or executed along with another activity. To provide an overview for the stakeholders, a new set of KPIs for the processes has been proposed, and the processes have been modelled using EPC and SIPOC methods.

To create a sustainable business, the management team should improve the two mapped business processes. By developing a sustainable property strategy, the management team ensures that all their properties (offices, plants, factories) are environmentally friendly. Collaboration with specialized agencies and market research is needed to discover the latest trends in sustainability.

All companies should evaluate the environmental impact of their products, services and operational processes to provide an overview for governmental agencies and ensure their progress towards creating a sustainable business.

The study demonstrated that not only the CSR department is responsible for executing the processes and using their outcomes, but also the procurement department and the whole management team. Therefore, sustainability is a joint effort from the key departments in a company.

The study has some limitations. Firstly, the classification of the activities (value-added, non-value added and essential non-value added) is based on the authors' experience. Secondly, the business model is not executed or tested, it is just a proposal. The next step for the study would be to test the model to validate the feasibility of the proposed solution.

To further develop this research, the study can be further expanded by designing appropriate business process control measures in order to provide a complete Six Sigma cycle.

Author Contributions: All authors contributed to writing and completing the research paper, read and approved the final version of the manuscript.

Funding: This research received no external funding.

Conflicts of Interest: The authors declare no conflict of interest.

References

1. Brundtland, G. Report of the World Commission on Environment and Development: Our Common Future. (1987). United Nations General Assembly Document A/42/427. Available online: <https://sustainabledevelopment.un.org/content/documents/5987our-common-future.pdf> (accessed on 5 July 2020).
2. Varela, L.; Araújo, A.; Ávila, P.; Castro, H.; Putnik, G. Evaluation of the Relation between Lean Manufacturing, Industry 4.0, and Sustainability. *Sustainability* **2019**, *11*, 1439.
3. Brozzi, R.; Forti, D.; Rauch, E.; Matt, D.T. The Advantages of Industry 4.0 Applications for Sustainability: Results from a Sample of Manufacturing Companies. *Sustainability* **2020**, *12*, 3647.
4. García-Muiña, F.E.; Medina-Salgado, M.S.; Ferrari, A.M.; Cucchi, M. Sustainability Transition in Industry 4.0 and Smart Manufacturing with the Triple-Layered Business Model Canvas. *Sustainability* **2020**, *12*, 2364.
5. Bonilla, S.H.; Silva, H.R.O.; Da Silva, M.T.; Gonçalves, R.F.; Sacomano, J.B. Industry 4.0 and Sustainability Implications: A Scenario-Based Analysis of the Impacts and Challenges. *Sustainability* **2018**, *10*, 3740.
6. Oláh, J.; Aburumman, N.; Popp, J.; Khan, M.A.; Haddad, H.; Kitukutha, N. Impact of Industry 4.0 on Environmental Sustainability. *Sustainability* **2020**, *12*, 4674.

7. European Telecommunications Network Operators' Association Facts & Figures about European Telecoms Operators. Available online: https://etno.eu/datas/ETNO%20Documents/Facts%20%20Figures_final.pdf (accessed on 26 June 2020).
8. Ahmadi, H.B.; Petrudi, S.H.H.; Wang, X. Integrating sustainability into supplier selection with analytical hierarchy process and improved grey relational analysis: A case of telecom industry. *Int. J. Adv. Manuf. Technol.* **2016**, *90*, 2413–2427.
9. Couckuyt, D.; Van Looy, A. Green BPM as a Business-Oriented Discipline: A Systematic Mapping Study and Research Agenda. *Sustainability* **2019**, *11*, 4200.
10. APQC Telecommunications Process Classification Framework. Available online: https://ebpm.ir/wp-content/uploads/2018/05/PCF_Telecom_Ver_5.0.2.pdf (accessed on 26 June 2020).
11. Vodafone Sustainable Business Report 2019. Available online: <https://www.vodafone.com/content/dam/vodcom/sustainability/pdfs/sustainablebusiness2019.pdf> (accessed on 26 June 2020).
12. Orange Raport de Sustenabilitate 2016–2017. Available online: <https://www.orange.ro/responsabilitate-sociala/rapoarte-csr/2016-2017-raport-csr.pdf> (accessed on 26 June 2020).
13. Deutsche Telekom Corporate Responsibility Report 2018. Available online: https://www.cr-report.telekom.com/site19/sites/default/files/pdf/cr_en_2018_dt_final.pdf (accessed on 26 June 2020).
14. Vodafone Sustainable Business Report 2019-Data Supplement. Available online: <https://www.vodafone.com/content/dam/vodcom/sustainability/pdfs/data-supplement-2019.pdf> (accessed on 26 June 2020).
15. Lindberg, C.-F.; Tan, S.; Yan, J.; Starfelt, F. Key Performance Indicators Improve Industrial Performance. *Energy Procedia* **2015**, *75*, 1785–1790.
16. Value Stream Mapping: Definition, Steps, and Examples. Available online: <https://tallyfy.com/value-stream-mapping/> (accessed on 26 June 2020).
17. Womack, J.P.; Jones, D.T. *Lean Thinking*; Free Press: New York, NY, USA, 2003.
18. Furterer, S. *Lean Six Sigma in Service: Applications and Case Studies*; CRC Press: Boca Raton, FL, USA, 2009.
19. Michael, L.G. *Lean Six Sigma for Service: How to Use Lean Speed and Six Sigma Quality to Improve Services and Transactions*; McGraw-Hill: New York, NY, USA, 2003.
20. Fleacă, E.; Fleacă, B.; Maiduc, S. Aligning Strategy with Sustainable Development Goals (SDGs): Process Scoping Diagram for Entrepreneurial Higher Education Institutions (HEIs). *Sustainability* **2018**, *10*, 1032.
21. ARIS Community Event-Driven Process Chain (EPC). Available online: <https://www.ariscommunity.com/event-driven-process-chain> (accessed on 26 June 2020).

Publisher's Note: MDPI stays neutral with regard to jurisdictional claims in published maps and institutional affiliations.



© 2020 by the authors. Licensee MDPI, Basel, Switzerland. This article is an open access article distributed under the terms and conditions of the Creative Commons Attribution (CC BY) license (<http://creativecommons.org/licenses/by/4.0/>).