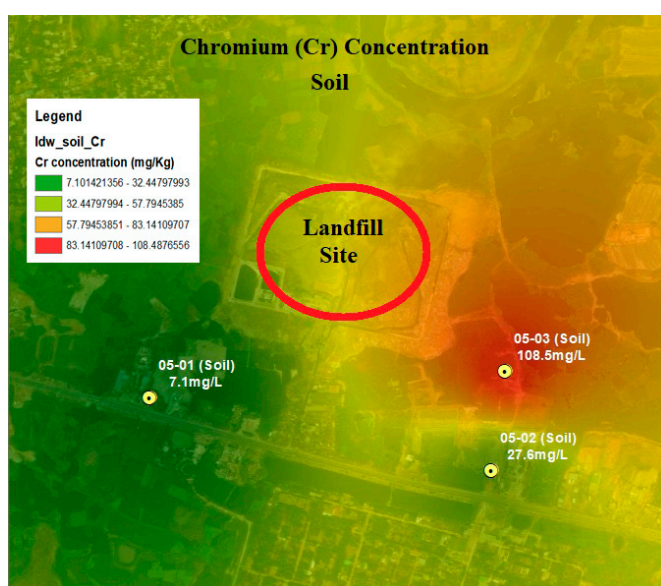


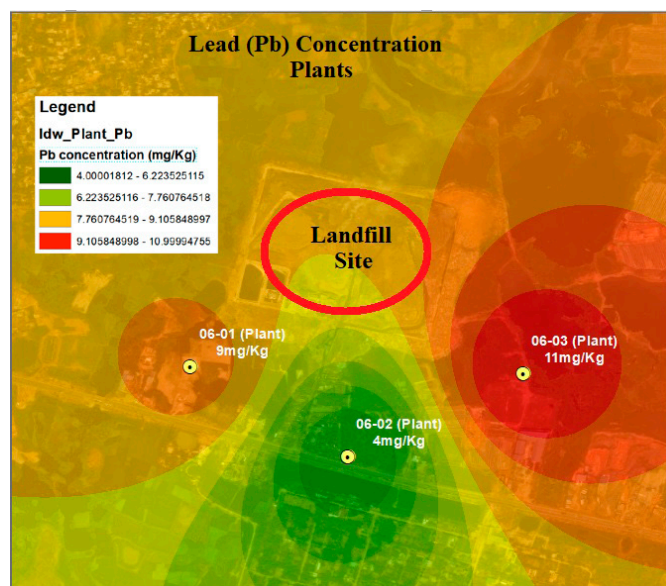


Table S1. Heavy metal(loid)s concentration in all samples.

Sample ID	Sample Type	Pb mg/L mg/kg	Cd mg/L mg/kg	Cr mg/L mg/kg	Co mg/L mg/kg	Ni mg/L mg/kg	As mg/L mg/kg
01	Leachate	0.04	0.004	0.03	0.076	0.198	0.0048
	Untreated						
02	Leachate	0.06	0.002	0.0058	0.038	0.122	0.021
	Treated						
	Mean	0.05	0.003	0.0179	0.057	0.16	0.0129
	SD	0.014	0.001	0.017	0.026	0.053	0.011
03-01	SW	0.0078	0.004	0.0064	0.026	0.082	0.005
03-02	SW	0.02	0.002	0.124	0.022	0.043	0.0038
03-03	SW	0.0028	0.0016	0.0024	0.018	0.035	0.00545
	Mean	0.01	0.002	0.044	0.022	0.053	0.0047
	SD	0.008	0.0012	0.069	0.004	0.025	0.0008
04-01	GW	0.0052	0.0026	0.008	0.014	0.08	0.0033
04-02	GW	0.0036	0.003	0.0036	0.01	0.029	0.00265
04-03	GW	0.0028	0.0032	0.0042	0.005	0.03	0.00155
	Mean	0.003	0.002	0.0052	0.0096	0.0463	0.0025
	SD	0.001	0.0003	0.002	0.0045	0.029	0.0008
05-01	Soil	12	0.11	7.1	4.5	15.3	0.83
05-02	Soil	9.25	0.03	27.6	12.35	33.1	1.905
05-03	Soil	26.75	0.2	108.5	12.575	38.55	2.065
	Mean	16	0.11	47.73	9.808	28.98	1.6
	SD	9.41	0.085	53.61	4.59	12.15	0.67
06-01	Plant	9	0.4	0.16	1.5	4.7	0.21
06-02	Plant	4	0.225	1.5	0.75	2.9	0.6275
06-03	Plant	11	0.575	5.125	2.925	6.7	0.31
	Mean	8	0.4	2.26	1.725	4.76	0.382
	SD	3.60	0.175	2.568	1.104	1.9	0.21



(a)



(b)

Figure S1: IWD of (a) Cr concentration in soil samples and (b) Pb concentration in plant samples.