

Supplementary Table S1

Checklist of 271 specimens of octocorals in the Equatorial Front. Each sample correspond to the occurrences of *Muricea* and *Leptogorgia* in the coastal provinces from 1982 to 2018. The records belong to the Museum of Zoology Q-CAZ of the Pontifical Catholic University of Ecuador (PUCE) and the repository of the National Center for Aquaculture and Marine Research (CENAIM).

Sample	Voucher	Coordinate X	Coordinate Y	Province	Locality	Locality Code	Date	Species	Depth
PUCE_1	NO VOUCHER	-80,9081958	-2,21969021	Santa Elena	Libertad	43	22/01/1992	<i>Leptogorgia alba</i>	NO DATA
PUCE_2	NO VOUCHER	-80,0618378	0,06412151	Manabi	Pedernales	18	02/11/2002	<i>Leptogorgia alba</i>	NO DATA
PUCE_3	NO VOUCHER	-79,5636106	0,99444465	Esmeraldas	Playa de Camarones	3	03/11/2011	<i>Leptogorgia alba</i>	NO DATA
PUCE_4	NO VOUCHER	-79,5627776	0,99472195	Esmeraldas	Playa de Camarones	3	20/11/2010	<i>Leptogorgia alba</i>	NO DATA
PUCE_5	NO VOUCHER	-79,8381571	0,8797593	Esmeraldas	Atacames	7	19/12/1992	<i>Leptogorgia alba</i>	NO DATA
PUCE_6	NO VOUCHER	-79,6527022	0,96919691	Esmeraldas	Rocafuerte	4	01/01/1987	<i>Leptogorgia alba</i>	NO DATA
PUCE_7	NO VOUCHER	-80,0602687	0,06386005	Manabi	Pedernales	18	02/11/2002	<i>Leptogorgia alba</i>	NO DATA
PUCE_8	NO VOUCHER	-79,1666664	1,10000024	Esmeraldas	Las Peñas	2	18/01/2003	<i>Leptogorgia alba</i>	NO DATA
PUCE_9	NO VOUCHER	-79,8754215	0,86783575	Esmeraldas	Sua	8	22/12/2002	<i>Leptogorgia alba</i>	NO DATA
PUCE_10	NO VOUCHER	-80,0954981	0,7177373	Esmeraldas	Playa Quingue	15	11/10/2014	<i>Leptogorgia alba</i>	NO DATA
PUCE_11	NO VOUCHER	-80,0492232	0,48131395	Esmeraldas	Portete	17	11/01/2004	<i>Leptogorgia alba</i>	NO DATA
PUCE_12	NO VOUCHER	-79,8750769	0,86542401	Esmeraldas	Sua	8	20/08/1987	<i>Leptogorgia alba</i>	NO DATA
PUCE_13	NO VOUCHER	-79,9252781	0,84750024	Esmeraldas	Same	9	23/01/1993	<i>Leptogorgia alba</i>	NO DATA
PUCE_14	NO VOUCHER	-80,5117992	-0,75394836	Manabi	San Clemente	24	28/12/1985	<i>Leptogorgia alba</i>	NO DATA
PUCE_15	NO VOUCHER	-79,8371233	0,88079296	Esmeraldas	Atacames	7	01/01/1987	<i>Leptogorgia alba</i>	NO DATA
PUCE_16	NO VOUCHER	-80,0072226	0,81766382	Esmeraldas	Playa Escondida	14	30/10/2010	<i>Leptogorgia alba</i>	NO DATA
PUCE_17	NO VOUCHER	-79,9252781	0,84750024	Esmeraldas	Same	9	18/01/1987	<i>Leptogorgia alba</i>	NO DATA
PUCE_18	NO VOUCHER	-79,1664125	1,09957436	Esmeraldas	Las Peñas	2	23/12/2002	<i>Leptogorgia alba</i>	NO DATA
PUCE_19	NO VOUCHER	-80,7499996	-1,35000028	Manabi	Puerto Cayo	31	27/12/2002	<i>Leptogorgia alba</i>	NO DATA
PUCE_20	NO VOUCHER	-79,9252781	0,84750024	Esmeraldas	Same	9	18/01/1987	<i>Leptogorgia alba</i>	NO DATA

Sample	Voucher	Coordinate X	Coordinate Y	Province	Locality	Locality Code	Date	Species	Depth
PUCE_21	NO VOUCHER	-79,8367787	0,87975932	Esmeraldas	Atacames	7	30/12/1996	<i>Leptogorgia alba</i>	NO DATA
PUCE_22	NO VOUCHER	-79,9252781	0,84750024	Esmeraldas	Same	9	28/12/1991	<i>Leptogorgia alba</i>	NO DATA
PUCE_23	NO VOUCHER	-79,8385016	0,87975932	Esmeraldas	Atacames	7	18/01/1987	<i>Leptogorgia alba</i>	NO DATA
PUCE_24	NO VOUCHER	-80,0521929	0,4770581	Esmeraldas	Portete	17	11/01/2004	<i>Leptogorgia alba</i>	NO DATA
PUCE_25	NO VOUCHER	-79,5636106	0,99444465	Esmeraldas	Playa de Camarones	3	03/11/2011	<i>Leptogorgia alba</i>	NO DATA
PUCE_26	NO VOUCHER	-80,7926962	-1,48579304	Manabi	Tortuguita	32	13/10/2002	<i>Leptogorgia alba</i>	NO DATA
PUCE_27	NO VOUCHER	-79,8179923	0,89347364	Esmeraldas	Tonsupa	5	04/01/1993	<i>Leptogorgia alba</i>	NO DATA
PUCE_28	NO VOUCHER	-80,7499996	-1,35000028	Manabi	Puerto Cayo	31	18/01/2003	<i>Leptogorgia alba</i>	NO DATA
PUCE_29	NO VOUCHER	-79,9480557	0,82916626	Esmeraldas	Puerto Tonchigue	11	02/11/2010	<i>Leptogorgia alba</i>	NO DATA
PUCE_30	NO VOUCHER	-80,0545287	0,4722679	Esmeraldas	Portete	17	11/01/2004	<i>Leptogorgia alba</i>	NO DATA
PUCE_31	NO VOUCHER	-79,8795564	0,86955844	Esmeraldas	Sua	8	23/11/2000	<i>Leptogorgia alba</i>	NO DATA
PUCE_32	NO VOUCHER	-79,9252781	0,84750024	Esmeraldas	Same	9	18/01/1987	<i>Leptogorgia alba</i>	NO DATA
PUCE_33	NO VOUCHER	-79,5636106	0,99444465	Esmeraldas	Playa de Camarones	9	03/11/2011	<i>Leptogorgia alba</i>	NO DATA
PUCE_34	NO VOUCHER	-78,8606366	1,2606111	Esmeraldas	San Lorenzo	1	18/01/2003	<i>Leptogorgia alba</i>	NO DATA
PUCE_35	NO VOUCHER	-79,876667	0,86611113	Esmeraldas	Sua	8	18/01/2004	<i>Leptogorgia alba</i>	NO DATA
PUCE_36	NO VOUCHER	-80,9069657	-2,21922924	Santa Elena	Libertad	43	23/01/1993	<i>Leptogorgia alba</i>	NO DATA
PUCE_37	NO VOUCHER	-79,8771444	0,86955844	Esmeraldas	Sua	8	20/11/2000	<i>Leptogorgia alba</i>	NO DATA
PUCE_38	NO VOUCHER	-79,8148542	0,8919047	Esmeraldas	Playa Ancha	6	15/12/1989	<i>Leptogorgia alba</i>	NO DATA
PUCE_39	NO VOUCHER	-80,4524995	-0,4797225	Manabi	Canoa	20	30/10/2010	<i>Leptogorgia alba</i>	NO DATA
PUCE_40	NO VOUCHER	-80,0502877	0,47777202	Esmeraldas	Portete	17	11/01/2004	<i>Leptogorgia alba</i>	NO DATA
PUCE_41	NO VOUCHER	-80,8150345	-1,56067182	Manabi	Puerto Lopez	34	27/12/2003	<i>Leptogorgia alba</i>	NO DATA
PUCE_42	NO VOUCHER	-80,4166701	-0,59999989	Manabi	Bahia de Caraquez	21	09/08/1986	<i>Leptogorgia alba</i>	NO DATA
PUCE_43	NO VOUCHER	-80,4524995	-0,4797225	Manabi	Canoa	20	29/12/1992	<i>Leptogorgia alba</i>	NO DATA
PUCE_44	NO VOUCHER	-80,4524995	-0,4797225	Manabi	Canoa	20	11/11/1983	<i>Leptogorgia alba</i>	NO DATA

Sample	Voucher	Coordinate X	Coordinate Y	Province	Locality	Locality Code	Date	Species	Depth
PUCE_45	NO VOUCHER	-79,9467212	0,8312419	Esmeraldas	Tonchigue	10	30/12/1999	<i>Leptogorgia alba</i>	NO DATA
PUCE_46	NO VOUCHER	-80,9092722	-2,21999751	Santa Elena	Libertad	43	01/01/1993	<i>Leptogorgia alba</i>	NO DATA
PUCE_47	NO VOUCHER	-80,7499996	-1,35000028	Manabi	Puerto Cayo	31	19/01/2003	<i>Leptogorgia alba</i>	NO DATA
PUCE_48	NO VOUCHER	-80,7305001	-0,93920028	Manabi	Playa Murcielago	27	26/12/1996	<i>Leptogorgia alba</i>	NO DATA
PUCE_49	NO VOUCHER	-79,8174693	0,89295065	Esmeraldas	Tonsupa	5	26/12/2002	<i>Leptogorgia alba</i>	NO DATA
PUCE_50	NO VOUCHER	-79,9252781	0,84750024	Esmeraldas	Same	9	30/10/2010	<i>Leptogorgia alba</i>	NO DATA
PUCE_51	NO VOUCHER	-80,7299871	-0,93847573	Manabi	Manta	26	11/08/2012	<i>Leptogorgia alba</i>	NO DATA
PUCE_52	NO VOUCHER	-80,4627779	-0,45166705	Manabi	Canoa	20	01/11/2010	<i>Leptogorgia alba</i>	NO DATA
PUCE_53	NO VOUCHER	-81,0999999	-1,26666695	Manabi	Isla de la Plata	30	27/12/2003	<i>Leptogorgia alba</i>	NO DATA
PUCE_54	NO VOUCHER	-79,8164233	0,89190467	Esmeraldas	Playa Ancha	6	30/12/1987	<i>Leptogorgia alba</i>	NO DATA
PUCE_55	NO VOUCHER	-80,4166701	-0,59999989	Manabi	Bahia de Caraquez	21	09/08/1986	<i>Leptogorgia alba</i>	NO DATA
PUCE_56	NO VOUCHER	-79,9480557	0,82916626	Esmeraldas	Puerto Tonchigue	11	01/11/2010	<i>Leptogorgia alba</i>	NO DATA
PUCE_57	NO VOUCHER	-80,0238888	0,5069445	Esmeraldas	Mompiche	16	18/10/2003	<i>Leptogorgia alba</i>	NO DATA
PUCE_58	NO VOUCHER	-80,8151114	-1,56113296	Manabi	Puerto Lopez	34	27/12/2003	<i>Leptogorgia alba</i>	NO DATA
PUCE_59	NO VOUCHER	-79,8179923	0,89242764	Esmeraldas	Tonsupa	5	26/12/2002	<i>Leptogorgia alba</i>	NO DATA
PUCE_60	NO VOUCHER	-79,8148542	0,8919047	Esmeraldas	Tonsupa	5	26/12/2002	<i>Leptogorgia alba</i>	NO DATA
PUCE_61	NO VOUCHER	-79,9480557	0,82916626	Esmeraldas	Puerto Tonchigue	11	01/11/2010	<i>Leptogorgia alba</i>	NO DATA
PUCE_62	NO VOUCHER	-79,8190384	0,89085879	Esmeraldas	Tonsupa	5	20/11/2004	<i>Leptogorgia alba</i>	NO DATA
PUCE_63	NO VOUCHER	-80,8149576	-1,56059497	Manabi	Puerto Lopez	34	27/12/2003	<i>Leptogorgia alba</i>	NO DATA
PUCE_64	NO VOUCHER	-79,8174693	0,88981282	Esmeraldas	Tonsupa	5	26/12/2002	<i>Leptogorgia alba</i>	NO DATA
PUCE_65	NO VOUCHER	-81,0999999	-1,26666695	Manabi	Isla de la Plata	30	27/12/2003	<i>Leptogorgia alba</i>	NO DATA
PUCE_66	NO VOUCHER	-80,8156496	-1,56151724	Manabi	Puerto Lopez	34	27/12/2003	<i>Leptogorgia alba</i>	NO DATA
PUCE_67	NO VOUCHER	-80,8155727	-1,56151724	Manabi	Puerto Lopez	34	27/12/2003	<i>Leptogorgia alba</i>	NO DATA
PUCE_68	NO VOUCHER	-80,7666666	-1,36666687	Manabi	Puerto Cayo	31	25/12/2002	<i>Leptogorgia alba</i>	NO DATA

Sample	Voucher	Coordinate X	Coordinate Y	Province	Locality	Locality Code	Date	Species	Depth
PUCE_69	NO VOUCHER	-79,8200844	0,88772111	Esmeraldas	Tonsupa	5	26/12/2002	<i>Leptogorgia alba</i>	NO DATA
PUCE_70	NO VOUCHER	-79,8127622	0,89451948	Esmeraldas	Tonsupa	5	26/12/2002	<i>Leptogorgia alba</i>	NO DATA
PUCE_71	NO VOUCHER	-80,7666666	-1,36666687	Manabi	Puerto Cayo	31	25/12/2002	<i>Leptogorgia alba</i>	NO DATA
PUCE_72	NO VOUCHER	-80,8159571	-1,56174781	Manabi	Puerto Lopez	34	27/12/2003	<i>Leptogorgia alba</i>	NO DATA
PUCE_73	NO VOUCHER	-79,8388462	0,88148203	Esmeraldas	Atacames	7	12/11/1987	<i>Leptogorgia alba</i>	NO DATA
PUCE_74	NO VOUCHER	-80,7666666	-1,36666687	Manabi	Puerto Cayo	31	21/12/1987	<i>Leptogorgia alba</i>	NO DATA
PUCE_75	NO VOUCHER	-79,8138082	0,89295064	Esmeraldas	Tonsupa	5	26/12/2002	<i>Leptogorgia alba</i>	NO DATA
PUCE_76	NO VOUCHER	-80,8141229	-1,55959447	Manabi	Puerto Lopez	34	25/10/2001	<i>Leptogorgia cuspidata</i>	NO DATA
PUCE_77	NO VOUCHER	-80,0236664	0,50732982	Esmeraldas	Mompiche	16	11/01/2003	<i>Leptogorgia cuspidata</i>	NO DATA
PUCE_78	NO VOUCHER	-80,7558838	-1,82910384	Santa Elena	Monta?ita	37	30/12/1990	<i>Leptogorgia cuspidata</i>	NO DATA
PUCE_79	NO VOUCHER	-80,7499996	-1,35000028	Manabi	Puerto Cayo	31	19/01/2003	<i>Leptogorgia cuspidata</i>	NO DATA
PUCE_80	NO VOUCHER	-80,8115449	-0,95526358	Manabi	San Mateo	29	04/11/2010	<i>Leptogorgia cuspidata</i>	NO DATA
PUCE_81	NO VOUCHER	-80,05024	0,82468281	Esmeraldas	Playa Galeras	12	24/10/2012	<i>Leptogorgia cuspidata</i>	NO DATA
PUCE_82	NO VOUCHER	-80,7666666	-1,36666687	Manabi	Puerto Cayo	31	10/11/2012	<i>Leptogorgia cuspidata</i>	NO DATA
PUCE_83	NO VOUCHER	-80,4166701	-0,59999989	Manabi	Bahia de Caraquez	21	12/10/2013	<i>Leptogorgia taboguilla</i>	NO DATA
PUCE_84	NO VOUCHER	-79,8190384	0,89295061	Esmeraldas	Tonsupa	5	18/01/1992	<i>Leptogorgia taboguilla</i>	NO DATA
PUCE_85	NO VOUCHER	-80,4166701	-0,59999989	Manabi	Bahia de Caraquez	21	12/10/2013	<i>Leptogorgia taboguilla</i>	NO DATA
PUCE_86	NO VOUCHER	-79,8360896	0,87975928	Esmeraldas	Atacames	7	03/01/1987	<i>Leptogorgia taboguilla</i>	NO DATA
PUCE_87	NO VOUCHER	-79,8371233	0,87907026	Esmeraldas	Atacames	7	03/01/1987	<i>Leptogorgia taboguilla</i>	NO DATA
PUCE_88	NO VOUCHER	-79,8726649	0,86542401	Esmeraldas	Sua	8	20/08/1987	<i>Leptogorgia taboguilla</i>	NO DATA
PUCE_89	NO VOUCHER	-80,5120715	-0,75331305	Manabi	San Clemente	24	20/11/2010	<i>Leptogorgia obscura</i>	NO DATA
PUCE_90	NO VOUCHER	-79,8374679	0,87941481	Esmeraldas	Atacames	7	01/03/1984	<i>Leptogorgia obscura</i>	NO DATA
PUCE_91	NO VOUCHER	-80,5120715	-0,75399375	Manabi	San Clemente	24	01/08/1986	<i>Leptogorgia obscura</i>	NO DATA
PUCE_92	NO VOUCHER	-80,3975528	-2,63689584	Santa Elena	Playas	44	22/11/1986	<i>Leptogorgia obscura</i>	NO DATA

Sample	Voucher	Coordinate X	Coordinate Y	Province	Locality	Locality Code	Date	Species	Depth
PUCE_93	NO VOUCHER	-79,8398799	0,88010384	Esmeraldas	Atacames	7	-	<i>Leptogorgia obscura</i>	NO DATA
PUCE_94	NO VOUCHER	-80,9707027	-2,20259288	Santa Elena	Salinas	42	04/02/2002	<i>Leptogorgia obscura</i>	NO DATA
PUCE_95	NO VOUCHER	-80,4562578	-0,46807796	Manabi	Canoa	20	19/01/2003	<i>Leptogorgia obscura</i>	NO DATA
PUCE_96	NO VOUCHER	-79,8374679	0,87907027	Esmeraldas	Atacames	7	01/01/1987	<i>Leptogorgia obscura</i>	NO DATA
PUCE_97	NO VOUCHER	-80,7409624	-1,35063679	Manabi	Puerto Cayo	31	23/12/2002	<i>Leptogorgia obscura</i>	NO DATA
PUCE_98	NO VOUCHER	-80,5121169	-0,75390298	Manabi	San Clemente	24	28/12/1986	<i>Leptogorgia obscura</i>	NO DATA
PUCE_99	NO VOUCHER	-80,8349445	-1,63286497	Manabi	Puerto Rico	35	28/12/1993	<i>Leptogorgia obscura</i>	NO DATA
PUCE_100	NO VOUCHER	-80,7499996	-1,35000028	Manabi	Puerto Cayo	31	28/12/2002	<i>Leptogorgia obscura</i>	NO DATA
PUCE_101	NO VOUCHER	-80,3317408	-0,1825857	Esmeraldas	Cabuyal	19	29/11/2002	<i>Leptogorgia obscura</i>	NO DATA
PUCE_102	NO VOUCHER	-80,5120261	-0,7543114	Manabi	San Clemente	24	28/12/1985	<i>Leptogorgia obscura</i>	NO DATA
PUCE_103	NO VOUCHER	-80,5122757	-0,75444754	Manabi	San Clemente	24	28/12/1986	<i>Leptogorgia obscura</i>	NO DATA
PUCE_104	NO VOUCHER	-80,7305001	-0,93920028	Manabi	Playa Murcielago	27	26/12/1996	<i>Leptogorgia obscura</i>	NO DATA
PUCE_105	NO VOUCHER	-80,7305001	-0,93920028	Manabi	Playa Murcielago	27	26/12/1996	<i>Leptogorgia obscura</i>	NO DATA
PUCE_106	NO VOUCHER	-80,4564702	-0,46589804	Manabi	Canoa	20	12/01/2003	<i>Leptogorgia obscura</i>	NO DATA
PUCE_107	NO VOUCHER	-80,4551281	-0,61925049	Manabi	Punta Bellaca	23	10/11/2010	<i>Leptogorgia obscura</i>	NO DATA
PUCE_108	NO VOUCHER	-79,8211304	0,88981291	Esmeraldas	Playa Ancha	6	30/12/1987	<i>Leptogorgia obscura</i>	NO DATA
PUCE_109	NO VOUCHER	-80,3997059	-2,64058456	Santa Elena	Playas	44	10/11/1986	<i>Leptogorgia obscura</i>	NO DATA
PUCE_110	NO VOUCHER	-80,7418081	-1,34856145	Manabi	Puerto Cayo	31	04/01/2003	<i>Leptogorgia obscura</i>	NO DATA
PUCE_111	NO VOUCHER	-80,7305001	-0,93920028	Manabi	Playa Murcielago	27	26/12/1996	<i>Leptogorgia obscura</i>	NO DATA
PUCE_112	NO VOUCHER	-80,5382346	-0,86221981	Manabi	Crucita	25	02/11/2003	<i>Leptogorgia obscura</i>	NO DATA
PUCE_113	NO VOUCHER	-79,8111931	0,89451951	Esmeraldas	Tonsupa	5	26/12/2002	<i>Leptogorgia obscura</i>	NO DATA
PUCE_114	NO VOUCHER	-79,8367788	0,8804484	Esmeraldas	Atacames	7	11/12/1987	<i>Leptogorgia obscura</i>	NO DATA
PUCE_115	NO VOUCHER	-80,5379623	-0,86185679	Manabi	Crucita	25	02/11/2003	<i>Leptogorgia obscura</i>	NO DATA
PUCE_116	NO VOUCHER	-80,4514308	-0,61021905	Manabi	Chirije	22	03/11/1997	<i>Leptogorgia obscura</i>	NO DATA

Sample	Voucher	Coordinate X	Coordinate Y	Province	Locality	Locality Code	Date	Species	Depth
PUCE_117	NO VOUCHER	-80,7531671	-0,94437788	Manabi	Barbasquillo	28	31/10/2010	<i>Leptogorgia obscura</i>	NO DATA
PUCE_118	NO VOUCHER	-80,3944756	-2,6375128	Santa Elena	Playas	44	22/11/1986	<i>Leptogorgia obscura</i>	NO DATA
PUCE_119	NO VOUCHER	-80,3889429	-2,64181788	Santa Elena	Playas	44	26/12/2002	<i>Leptogorgia obscura</i>	NO DATA
PUCE_120	NO VOUCHER	-80,0628153	0,06416594	Manabi	Pedernales	18	18/01/2003	<i>Leptogorgia obscura</i>	NO DATA
PUCE_121	NO VOUCHER	-80,7499996	-1,35000028	Manabi	Puerto Cayo	31	11/01/2003	<i>Leptogorgia obscura</i>	NO DATA
PUCE_122	NO VOUCHER	-80,5122984	-0,75494671	Manabi	San Clemente	24	28/12/1985	<i>Leptogorgia obscura</i>	NO DATA
PUCE_123	NO VOUCHER	-80,4166701	-0,59999989	Manabi	Bahia de Caraquez	21	01/12/1986	<i>Leptogorgia obscura</i>	NO DATA
PUCE_124	NO VOUCHER	-80,5123438	-0,75544588	Manabi	San Clemente	24	20/11/2010	<i>Leptogorgia aequatorialis</i>	NO DATA
PUCE_125	NO VOUCHER	-80,4166701	-0,59999989	Manabi	Bahia de Caraquez	21	01/12/1986	<i>Leptogorgia aequatorialis</i>	NO DATA
PUCE_126	NO VOUCHER	-79,8096241	0,89556537	Esmeraldas	Tonsupa	5	29/11/2002	<i>Leptogorgia aequatorialis</i>	NO DATA
PUCE_127	NO VOUCHER	-80,4558335	-0,6200003	Manabi	Punta Bellaca	23	20/11/2010	<i>Leptogorgia aequatorialis</i>	NO DATA
PUCE_128	NO VOUCHER	-80,4166701	-0,59999989	Manabi	Bahia de Caraquez	21	01/12/1986	<i>Leptogorgia aequatorialis</i>	NO DATA
PUCE_129	NO VOUCHER	-80,7499996	-1,35000028	Manabi	Puerto Cayo	31	19/01/2003	<i>Leptogorgia aequatorialis</i>	NO DATA
PUCE_130	NO VOUCHER	-80,7305001	-0,93920028	Manabi	Playa Murcielago	27	26/12/1996	<i>Leptogorgia aequatorialis</i>	NO DATA
PUCE_131	NO VOUCHER	-80,5123892	-0,75530975	Manabi	San Clemente	24	28/12/1986	<i>Leptogorgia aequatorialis</i>	NO DATA
PUCE_132	NO VOUCHER	-80,7499996	-1,35000028	Manabi	Puerto Cayo	31	28/12/2002	<i>Leptogorgia aequatorialis</i>	NO DATA
PUCE_133	NO VOUCHER	-80,5382346	-0,86258284	Manabi	Crucita	25	02/11/2003	<i>Leptogorgia aequatorialis</i>	NO DATA
PUCE_134	NO VOUCHER	-80,7499996	-1,35000028	Manabi	Puerto Cayo	31	28/12/2002	<i>Leptogorgia aequatorialis</i>	NO DATA
PUCE_135	NO VOUCHER	-80,7499996	-1,35000028	Manabi	Puerto Cayo	31	28/12/2002	<i>Leptogorgia aequatorialis</i>	NO DATA
PUCE_136	NO VOUCHER	-80,7305001	-0,93920028	Manabi	Playa Murcielago	27	26/12/1996	<i>Leptogorgia aequatorialis</i>	NO DATA
PUCE_137	NO VOUCHER	-80,7499996	-1,35000028	Manabi	Puerto Cayo	31	01/12/2002	<i>Muricea purpurea</i>	NO DATA
PUCE_138	NO VOUCHER	-80,7499996	-1,35000028	Manabi	Puerto Cayo	31	18/01/2003	<i>Muricea sp1</i>	NO DATA
PUCE_139	NO VOUCHER	-80,7499996	-1,35000028	Manabi	Puerto Cayo	31	28/12/2002	<i>Muricea sp1</i>	NO DATA
PUCE_140	NO VOUCHER	-79,9451522	0,83307234	Esmeraldas	Tonchigue	10	30/12/1999	<i>Leptogorgia alba</i>	NO DATA

Sample	Voucher	Coordinate X	Coordinate Y	Province	Locality	Locality Code	Date	Species	Depth
PUCE_141	NO VOUCHER	-79,9438446	0,83281084	Esmeraldas	Tonchigue	10	30/12/1999	<i>Leptogorgia alba</i>	NO DATA
PUCE_142	NO VOUCHER	-79,9451522	0,83150345	Esmeraldas	Tonchigue	10	30/12/1999	<i>Leptogorgia obscura</i>	NO DATA
PUCE_143	NO VOUCHER	-79,9422755	0,8333338	Esmeraldas	Tonchigue	10	30/12/1999	<i>Muricea fruticosa</i>	NO DATA
PUCE_144	NO VOUCHER	-79,9430601	0,83385677	Esmeraldas	Tonchigue	10	30/12/1999	<i>Leptogorgia alba</i>	NO DATA
PUCE_145	NO VOUCHER	-79,9472442	0,83124195	Esmeraldas	Tonchigue	10	30/12/1999	<i>Leptogorgia alba</i>	NO DATA
PUCE_146	NO VOUCHER	-79,9480288	0,82915006	Esmeraldas	Tonchigue	10	30/12/1999	<i>Leptogorgia cuspidata</i>	NO DATA
PUCE_147	NO VOUCHER	-79,9448907	0,83228783	Esmeraldas	Tonchigue	10	30/12/1999	<i>Muricea purpurea</i>	NO DATA
PUCE_148	NO VOUCHER	-79,9485518	0,83045749	Esmeraldas	Tonchigue	10	30/12/1999	<i>Muricea purpurea</i>	NO DATA
PUCE_149	NO VOUCHER	-79,9422756	0,83411825	Esmeraldas	Tonchigue	10	30/12/1999	<i>Leptogorgia sp1</i>	NO DATA
PUCE_150	NO VOUCHER	-79,808578	0,8960883	Esmeraldas	Tonsupa	5	20/11/2004	<i>Muricea purpurea</i>	NO DATA
PUCE_151	NO VOUCHER	-80,7499996	-1,35000028	Manabi	Puerto Cayo	31	04/12/2002	<i>Leptogorgia pumila</i>	NO DATA
PUCE_152	NO VOUCHER	-80,512253	-0,75458368	Manabi	San Clemente	24	01/08/1986	<i>Leptogorgia sp2</i>	NO DATA
PUCE_153	NO VOUCHER	-80,5119581	-0,75442485	Manabi	San Clemente	24	25/12/1985	<i>Leptogorgia sp2</i>	NO DATA
PUCE_154	NO VOUCHER	-79,8524571	0,87333975	Esmeraldas	Atacames	7	30/10/2010	<i>Leptogorgia pumila</i>	NO DATA
PUCE_155	NO VOUCHER	-80,7485816	-1,34059295	Manabi	Puerto Cayo	31	27/12/2002	<i>Leptogorgia pumila</i>	NO DATA
PUCE_156	NO VOUCHER	-80,7412698	-1,34948395	Manabi	Puerto Cayo	31	04/01/2003	<i>Leptogorgia alba</i>	NO DATA
PUCE_157	NO VOUCHER	-79,6527022	0,96919691	Esmeraldas	Rocafuerte	4	01/01/1982	<i>Leptogorgia alba</i>	NO DATA
PUCE_158	NO VOUCHER	-79,5636107	0,99638921	Esmeraldas	Playa de Camarones	3	02/11/2011	<i>Leptogorgia cf alba</i>	NO DATA
PUCE_159	NO VOUCHER	-79,5638642	0,99546778	Esmeraldas	Playa de Camarones	3	20/11/2010	<i>Leptogorgia cf alba</i>	NO DATA
PUCE_160	NO VOUCHER	-79,6527022	0,96919691	Esmeraldas	Rocafuerte	4	14/01/1987	<i>Leptogorgia cf alba</i>	NO DATA
PUCE_161	NO VOUCHER	-80,7499996	-1,35000028	Manabi	Puerto Cayo	31	04/12/2002	<i>Muricea purpurea</i>	NO DATA
PUCE_162	NO VOUCHER	-79,8771444	0,86852481	Esmeraldas	Sua	8	20/12/2000	<i>Muricea purpurea</i>	NO DATA
PUCE_163	NO VOUCHER	-80,7560372	-1,82695239	Santa Elena	Monta?ita	37	30/12/2000	<i>Muricea purpurea</i>	NO DATA
PUCE_164	NO VOUCHER	-80,0502238	0,82468281	Esmeraldas	Punta Galera	13	18/01/1987	<i>Muricea purpurea</i>	NO DATA

Sample	Voucher	Coordinate X	Coordinate Y	Province	Locality	Locality Code	Date	Species	Depth
PUCE_165	NO VOUCHER	-80,7499996	-1,35000028	Manabi	Puerto Cayo	31	04/12/2002	<i>Muricea purpurea</i>	NO DATA
PUCE_166	NO VOUCHER	-80,0172058	0,8183831	Esmeraldas	Playa Escondida	14	19/10/2012	<i>Muricea purpurea</i>	NO DATA
PUCE_167	NO VOUCHER	-79,8371233	0,87975934	Esmeraldas	Atacames	7	23/01/1988	<i>Muricea purpurea</i>	NO DATA
PUCE_168	NO VOUCHER	-80,7499996	-1,35000028	Manabi	Puerto Cayo	31	25/12/2002	<i>Muricea purpurea</i>	NO DATA
PUCE_169	NO VOUCHER	-80,7499996	-1,35000028	Manabi	Puerto Cayo	31	19/01/2003	<i>Muricea purpurea</i>	NO DATA
PUCE_170	NO VOUCHER	-80,8343294	-1,6336335	Manabi	Puerto Rico	35	28/12/1993	<i>Muricea purpurea</i>	NO DATA
PUCE_171	NO VOUCHER	-80,8132926	-1,55815632	Manabi	Puerto Lopez	34	18/01/2003	<i>Muricea purpurea</i>	NO DATA
PUCE_172	NO VOUCHER	-80,05024	0,82468281	Esmeraldas	Playa Galeras	12	20/10/2012	<i>Muricea purpurea</i>	NO DATA
PUCE_173	NO VOUCHER	-79,8785227	0,87197022	Esmeraldas	Sua	8	19/12/2002	<i>Muricea purpurea</i>	NO DATA
PUCE_174	NO VOUCHER	-80,7966667	-1,71333352	Santa Elena	La Rinconada	36	11/10/2013	<i>Muricea purpurea</i>	NO DATA
PUCE_175	NO VOUCHER	-80,7499996	-1,35000028	Manabi	Puerto Cayo	31	19/01/2003	<i>Muricea purpurea</i>	NO DATA
PUCE_176	NO VOUCHER	-80,7666666	-1,36666687	Manabi	Puerto Cayo	31	25/12/2002	<i>Muricea purpurea</i>	NO DATA
PUCE_177	NO VOUCHER	-80,7499996	-1,35000028	Manabi	Puerto Cayo	31	28/12/2002	<i>Muricea purpurea</i>	NO DATA
PUCE_178	NO VOUCHER	-80,8137325	-1,55890305	Manabi	Puerto Lopez	34	25/10/2001	<i>Muricea purpurea</i>	NO DATA
PUCE_179	NO VOUCHER	-79,873354	0,86783576	Esmeraldas	Sua	8	23/11/2000	<i>Muricea purpurea</i>	NO DATA
PUCE_180	NO VOUCHER	-80,8142656	-1,56028754	Manabi	Puerto Lopez	34	05/12/2002	<i>Muricea purpurea</i>	NO DATA
PUCE_181	NO VOUCHER	-79,8381571	0,87941476	Esmeraldas	Atacames	7	23/01/1998	<i>Muricea purpurea</i>	NO DATA
PUCE_182	NO VOUCHER	-80,7562232	-1,82806497	Santa Elena	Monta?ita	37	27/12/2002	<i>Muricea purpurea</i>	NO DATA
PUCE_183	NO VOUCHER	-79,9252781	0,84750024	Esmeraldas	Same	9	18/01/1987	<i>Muricea purpurea</i>	NO DATA
PUCE_184	NO VOUCHER	-79,8127622	0,89451948	Esmeraldas	Tonsupa	5	18/01/1987	<i>Muricea purpurea</i>	NO DATA
PUCE_185	NO VOUCHER	-80,7499996	-1,35000028	Manabi	Puerto Cayo	31	28/12/2002	<i>Muricea purpurea</i>	NO DATA
PUCE_186	NO VOUCHER	-80,8008971	-1,49607514	Manabi	Los Frailes	33	27/12/2003	<i>Muricea purpurea</i>	NO DATA
PUCE_187	NO VOUCHER	-80,0519104	0,47411276	Esmeraldas	Portete	17	11/01/1984	<i>Muricea purpurea</i>	NO DATA
PUCE_188	NO VOUCHER	-80,7966667	-1,71333352	Santa Elena	La Rinconada	36	13/10/2013	<i>Muricea purpurea</i>	NO DATA

Sample	Voucher	Coordinate X	Coordinate Y	Province	Locality	Locality Code	Date	Species	Depth
PUCE_189	NO VOUCHER	-79,8393813	0,88031489	Esmeraldas	Sua	8	20/11/2000	<i>Muricea purpurea</i>	NO DATA
PUCE_190	NO VOUCHER	-79,838003	0,88065945	Esmeraldas	Sua	8	20/11/2000	<i>Muricea purpurea</i>	NO DATA
PUCE_191	NO VOUCHER	-80,7499996	-1,35000028	Manabi	Puerto Cayo	31	28/12/2002	<i>Muricea purpurea</i>	NO DATA
PUCE_192	NO VOUCHER	-80,0625126	0,06420637	Manabi	Pedernales	18	20/12/2002	<i>Muricea purpurea</i>	NO DATA
PUCE_193	NO VOUCHER	-80,7499996	-1,35000028	Manabi	Puerto Cayo	31	19/01/2003	<i>Muricea sp1</i>	NO DATA
PUCE_194	NO VOUCHER	-80,5120261	-0,75306347	Manabi	San Clemente	24	01/08/1986	<i>Muricea sp1</i>	NO DATA
PUCE_195	NO VOUCHER	-80,7499996	-1,35000028	Manabi	Puerto Cayo	31	25/12/2002	<i>Muricea sp1</i>	NO DATA
PUCE_196	NO VOUCHER	-80,7666666	-1,36666687	Manabi	Puerto Cayo	31	25/12/2002	<i>Muricea sp1</i>	NO DATA
PUCE_197	NO VOUCHER	-80,7499996	-1,35000028	Manabi	Puerto Cayo	31	19/01/2003	<i>Muricea sp1</i>	NO DATA
PUCE_198	NO VOUCHER	-80,003398	0,81733731	Esmeraldas	Playa Escondida	14	13/10/2012	<i>Muricea fruticosa</i>	NO DATA
PUCE_199	NO VOUCHER	-80,9816045	-2,19644479	Santa Elena	Salinas	42	04/08/2002	<i>Muricea fruticosa</i>	NO DATA
PUCE_200	NO VOUCHER	-80,0624437	0,06113839	Manabi	Pedernales	18	29/12/2002	<i>Muricea fruticosa</i>	NO DATA
PUCE_201	NO VOUCHER	-80,7305001	-0,93920028	Manabi	Playa Murcielago	27	26/12/1993	<i>Muricea fruticosa</i>	NO DATA
PUCE_202	NO VOUCHER	-80,7666666	-1,36666687	Manabi	Puerto Cayo	31	10/11/2012	<i>Muricea fruticosa</i>	NO DATA
PUCE_203	NO VOUCHER	-80,0010444	0,81707574	Esmeraldas	Playa Escondida	14	13/10/2012	<i>Muricea fruticosa</i>	NO DATA
PUCE_204	NO VOUCHER	-79,9482903	0,82941155	Esmeraldas	Tonchigue	10	30/10/2010	<i>Muricea fruticosa</i>	NO DATA
PUCE_205	NO VOUCHER	-80,7666666	-1,36666687	Manabi	Puerto Cayo	31	27/12/1991	<i>Muricea fruticosa</i>	NO DATA
PUCE_206	NO VOUCHER	-80,7666666	-1,36666687	Manabi	Puerto Cayo	31	10/11/2012	<i>Muricea fruticosa</i>	NO DATA
PUCE_207	NO VOUCHER	-80,0613415	0,06403692	Manabi	Pedernales	18	17/01/2003	<i>Muricea fruticosa</i>	NO DATA
PUCE_208	NO VOUCHER	-79,8732137	0,8651596	Esmeraldas	Sua	8	29/12/2002	<i>Muricea fruticosa</i>	NO DATA
PUCE_209	NO VOUCHER	-80,9671519	-2,2029	Santa Elena	Salinas	42	04/08/2002	<i>Muricea fruticosa</i>	NO DATA
PUCE_210	NO VOUCHER	-80,0007829	0,81707577	Esmeraldas	Playa Escondida	14	13/10/2012	<i>Muricea fruticosa</i>	NO DATA
PUCE_211	NO VOUCHER	-80,0610074	0,06516605	Manabi	Pedernales	18	30/12/2002	<i>Muricea fruticosa</i>	NO DATA
PUCE_212	NO VOUCHER	-80,0607234	0,0639042	Manabi	Pedernales	18	18/01/2003	<i>Muricea fruticosa</i>	NO DATA

Sample	Voucher	Coordinate X	Coordinate Y	Province	Locality	Locality Code	Date	Species	Depth
PUCE_213	NO VOUCHER	-79,8366247	0,88031493	Esmeraldas	Sua	8	06/12/2002	<i>Muricea fruticosa</i>	NO DATA
PUCE_214	NO VOUCHER	-79,8781895	0,86796475	Esmeraldas	Sua	8	23/12/2002	<i>Muricea fruticosa</i>	NO DATA
PUCE_215	NO VOUCHER	-79,9252781	0,84750024	Esmeraldas	Same	9	30/10/2010	<i>Muricea fruticosa</i>	NO DATA
PUCE_216	NO VOUCHER	-80,7666666	-1,36666687	Manabi	Puerto Cayo	31	28/12/1991	<i>Muricea fruticosa</i>	NO DATA
PUCE_217	NO VOUCHER	-80,8360209	-1,63163531	Manabi	Puerto Rico	35	10/10/2012	<i>Muricea fruticosa</i>	NO DATA
PUCE_218	NO VOUCHER	-80,7666666	-1,36666687	Manabi	Puerto Cayo	31	10/11/2012	<i>Muricea fruticosa</i>	NO DATA
PUCE_219	NO VOUCHER	-80,7666666	-1,36666687	Manabi	Puerto Cayo	31	10/11/2012	<i>Muricea fruticosa</i>	NO DATA
PUCE_220	NO VOUCHER	-80,9600756	-2,20228605	Santa Elena	Salinas	42	26/12/1992	<i>Muricea fruticosa</i>	NO DATA
PUCE_221	NO VOUCHER	-80,3904762	-2,63935511	Guayas	Playas	44	30/12/2002	<i>Muricea fruticosa</i>	NO DATA
PUCE_222	NO VOUCHER	-80,7666666	-1,36666687	Manabi	Puerto Cayo	31	07/12/1991	<i>Muricea fruticosa</i>	NO DATA
PUCE_223	NO VOUCHER	-80,7666666	-1,36666687	Manabi	Puerto Cayo	31	10/11/2012	<i>Muricea fruticosa</i>	NO DATA
PUCE_224	NO VOUCHER	-80,062649	0,06272933	Manabi	Pedernales	18	17/01/2003	<i>Muricea fruticosa</i>	NO DATA
PUCE_225	NO VOUCHER	-80,0613147	0,06359855	Manabi	Pedernales	18	01/02/2003	<i>Muricea fruticosa</i>	NO DATA
PUCE_226	NO VOUCHER	-80,7464032	-1,34204482	Manabi	Puerto Cayo	31	27/12/2002	<i>Muricea fruticosa</i>	NO DATA
PUCE_227	NO VOUCHER	-80,51248	-0,75512823	Manabi	San Clemente	24	01/05/1986	<i>Muricea fruticosa</i>	NO DATA
PUCE_228	NO VOUCHER	-80,4524995	-0,4797225	Manabi	Canoa	20	16/11/2012	<i>Muricea fruticosa</i>	NO DATA
PUCE_229	NO VOUCHER	-80,5120261	-0,75349458	Manabi	San Clemente	24	01/08/1986	<i>Muricea fruticosa</i>	NO DATA
PUCE_230	NO VOUCHER	-80,7966667	-1,71333352	Santa Elena	La Rinconada	36	12/10/2013	<i>Muricea fruticosa</i>	NO DATA
PUCE_231	NO VOUCHER	-80,0613415	0,06325235	Manabi	Pedernales	18	17/01/2003	<i>Muricea fruticosa</i>	NO DATA
PUCE_232	NO VOUCHER	-80,7966667	-1,71333352	Santa Elena	La Rinconada	36	12/10/2013	<i>Muricea crassa</i>	NO DATA
PUCE_233	NO VOUCHER	-79,1666664	1,10000024	Esmeraldas	Pe?as	2	18/01/2003	<i>Muricea squarrosa</i>	NO DATA
PUCE_234	NO VOUCHER	-80,7554649	-1,82816818	Santa Elena	Monta?ita	37	27/12/2002	<i>Muricea plantaginea</i>	NO DATA
PUCE_235	NO VOUCHER	-80,4024721	-2,64181027	Santa Elena	Playas	44	28/12/2002	<i>Muricea plantaginea</i>	NO DATA
PUCE_236	NO VOUCHER	-79,1666664	1,10000024	Esmeraldas	Pe?as	2	18/01/2003	<i>Muricea squarrosa</i>	NO DATA

Sample	Voucher	Coordinate X	Coordinate Y	Province	Locality	Locality Code	Date	Species	Depth
PUCE_237	NO VOUCHER	-80,0615545	0,06468987	Manabi	Pedernales	18	30/12/2002	<i>Muricea squarrosa</i>	NO DATA
PUCE_238	NO VOUCHER	-80,0642884	0,0597693	Manabi	Pedernales	18	30/12/2002	<i>Muricea crassa</i>	NO DATA
PUCE_239	NO VOUCHER	-80,9623983	-2,20289916	Santa Elena	Salinas	42	05/08/2002	<i>Leptogorgia taboguilla</i>	NO DATA
PUCE_240	NO VOUCHER	-79,8159003	0,8934736	Esmeraldas	Tonsupa	5	08/01/1982	<i>Leptogorgia taboguilla</i>	NO DATA
PUCE_241	NO VOUCHER	-80,0502238	0,82468281	Esmeraldas	Punta Galera	13	22/10/2012	<i>Leptogorgia cuspidata</i>	NO DATA
PUCE_242	NO VOUCHER	-79,8750769	0,8668021	Esmeraldas	Sua	8	20/11/2000	<i>Leptogorgia cuspidata</i>	NO DATA
PUCE_243	NO VOUCHER	-80,7424999	-1,34702419	Manabi	Puerto Cayo	31	04/01/2003	<i>Leptogorgia cuspidata</i>	NO DATA
PUCE_244	NO VOUCHER	-80,7446381	-1,34435274	Manabi	Puerto Cayo	31	18/01/2003	<i>Muricea hebes</i>	NO DATA
PUCE_245	NO VOUCHER	-80,7439754	-1,34578813	Manabi	Puerto Cayo	31	28/12/2002	<i>Muricea hebes</i>	NO DATA
PUCE_246	NO VOUCHER	-80,7967269	-1,71466738	Santa Elena	La Rinconada	36	12/10/2013	<i>Muricea plantaginea</i>	NO DATA
PUCE_247	NO VOUCHER	-80,8138873	-1,55933434	Manabi	Puerto Lopez	34	28/10/2004	<i>Muricea plantaginea</i>	NO DATA
PUCE_248	NO VOUCHER	-80,4585572	-0,46092271	Manabi	Canoa	20	19/01/2003	<i>Muricea plantaginea</i>	NO DATA
PUCE_249	NO VOUCHER	-80,7549923	-1,82897876	Santa Elena	Montañita	37	28/12/2002	<i>Muricea plantaginea</i>	NO DATA
PUCE_250	NO VOUCHER	-80,0634944	0,06042928	Manabi	Pedernales	18	30/12/2002	<i>Muricea plantaginea</i>	NO DATA
PUCE_251	NO VOUCHER	-80,7557102	-1,82768169	Santa Elena	Montañita	37	28/12/2002	<i>Muricea plantaginea</i>	NO DATA
PUCE_252	NO VOUCHER	-80,4187417	-0,60051952	Manabi	Bahia de Caraquez	21	01/12/1986	<i>Muricea plantaginea</i>	NO DATA
PUCE_253	NO VOUCHER	-80,7552132	-1,98351654	Santa Elena	Ayangue	40	27/12/3003	<i>Muricea plantaginea</i>	NO DATA
PUCE_254	NO VOUCHER	-80,4176372	-0,60024342	Manabi	Bahia de Caraquez	21	20/11/2010	<i>Muricea plantaginea</i>	NO DATA
PUCE_255	NO VOUCHER	-80,0646541	0,05849642	Manabi	Pedernales	18	13/11/2010	<i>Muricea plantaginea</i>	NO DATA
PUCE_256	NO VOUCHER	-81,0961026	-1,27988341	Manabi	Isla de la Plata	30	27/12/2003	<i>Muricea plantaginea</i>	NO DATA
CENAIM_1	150807EP07-04	-80,7890305	-1,93505561	Santa Elena	El Pelado	38	07/08/2015	<i>Muricea squarrosa</i>	20 m
CENAIM_2	150807EP07-06	-80,7890443	-1,93491732	Santa Elena	El Pelado	38	07/08/2015	<i>Muricea plantaginea</i>	20 m
CENAIM_3	150813EP01-14	-80,7890305	-1,93518008	Santa Elena	El Pelado	38	13/08/2015	<i>Muricea fruticosa</i>	15 m
CENAIM_4	150825EP03-07	-80,7890858	-1,93483434	Santa Elena	El Pelado	38	25/08/2015	<i>Muricea austera</i>	30 m

Sample	Voucher	Coordinate X	Coordinate Y	Province	Locality	Locality Code	Date	Species	Depth
CENAIM_5	150918EP04-27	-80,7890443	-1,93529071	Santa Elena	El Pelado	38	18/09/2015	<i>Muricea purpurea</i>	10 m
CENAIM_6	151204EP09-02	-80,7890305	-1,93484818	Santa Elena	El Pelado	38	04/12/2015	<i>Leptogorgia taboguilla</i>	13 m
CENAIM_7	151204EP09-03	-80,7889198	-1,93494498	Santa Elena	El Pelado	38	04/12/2015	<i>Leptogorgia alba</i>	10 m
CENAIM_8	160212EP11-15	-80,7896947	-1,93479286	Santa Elena	El Pelado	38	12/02/2016	<i>Muricea crassa</i>	NO DATA
CENAIM_9	170907EP07-10	-80,7897362	-1,93501413	Santa Elena	El Pelado	38	07/09/2017	<i>Leptogorgia cf alba</i>	7 m
CENAIM_10	180718TSP02-03	-80,7897223	-1,93516625	Santa Elena	El Pelado	38	18/07/2018	<i>Leptogorgia obscura</i>	NO DATA
CENAIM_11	180802EP02-02	-80,7897223	-1,93537369	Santa Elena	El Pelado	38	02/08/2018	<i>Leptogorgia pumila</i>	NO DATA
CENAIM_12	180823PA01-03	-80,7896947	-1,93487584	Santa Elena	Palmar	41	23/08/2018	<i>Leptogorgia cuspidata</i>	NO DATA
CENAIM_13	180718TSP02-04	-80,7459969	-1,96890933	Santa Elena	San Pedro	39	18/07/2018	<i>Leptogorgia pumila</i>	NO DATA
CENAIM_14	180725TSP01-02	-80,7463152	-1,96882636	Santa Elena	San Pedro	39	25/07/2018	<i>Muricea purpurea</i>	NO DATA
CENAIM_15	181017EP07-22	-80,7889543	-1,93508011	Santa Elena	El Pelado	38	17/10/2018	<i>Muricea hebes</i>	NO DATA

Supplementary Table S2

Localities and geographical coordinates of the five macrozones established at the Equatorial Front data from the Technical Secretariat of the Sea. Adapted from (Valle and Fuentes, 2014) [1].

Macrozone	Locality	Longitude	Latitude
M1	Northern with Colombia	1.439434	-78.836946
	Punta Galera	0.820235	-80.051967
M2	Territorial sea of Punta Galera	0.820235	-80.051967
	Northern of Cabo Pasado	0.369021	-80.484298
M3	Cabo Pasado	0.369021	-80.484298
	Cabo San Lorenzo	-1.058653	-80.912380
M4	Perpendicular projection of Cabo San Lorenzo	-1.058653	-80.912380
	Puntilla Santa Elena	-2.188625	-81.010485
M5	Perpendicular projection of the Puntilla Santa Elena	-2.188625	-81.010485
	Border limit with Perú	-3.382287	-80.297060

Supplementary Table S3

Comparative features of the octocoral species found in the Macrozones at the Equatorial Front. The first line of each species corresponds to the morphological and taxonomical characteristics described in previous studies. The measurements are given in cm/mm.

Species name	Colour of colony	Colour of the polyps	Colony shape	Colony size length/wide (cm)	Branching pattern	Length of unbranched terminal branchlets (cm)	Diameter of end branchlets (mm)	Dominant sclerite type	Coenenchyme sclerites	Sclerites size length/wide (mm)
<i>Muricea fruticosa</i> (Breedy & Guzmán, 2016 [2])	Reddish to dark brown/white to pale yellow stems bicolored	White	Bushy spherical	25 x 40	Irregularly	15-40	3-6	Unilateral spinose spindles	Deep reddish brown/brownish yellow to pale yellow	0.28-1.0 x 0.05-0.10
	Reddish brown-white bicolored	White	Bushy	35 x 45	Irregularly	15-40	3-5	Unilateral spinose spindles	Reddish brown/amber/pale yellow to whitish	0.30-1.0 x 0.05-0.12
<i>Muricea plantaginea</i> (Breedy & Guzmán, 2016[2])	White-grey or light brown to yellowish	White or yellow	Branch in a single plane/ flabelliform	42 x 20	Irregularly lateral	10-50	2-3	Leaf like-Spindles	Reddish brown/orange to white	0.25-1.0 x 0.08-0.21
	Deep brown and white	NA	Flabelliform	40 x 18	Irregularly lateral	10-50	2-3	Leaf like-Spindles	Reddish brown and amber	0.22-1.0 x 0.09-0.20
<i>Muricea austera</i> (Breedy & Guzmán, 2016[2])	Reddish brown/pale yellow	Reddish orange to yellow	Bushy	17 x 20	Dichotomous-lateral	50	6-9	Unilateral spinose spindles	Reddish brown/pale orange/yellow	0.52-1.3 x 0.18-0.50
	Reddish brown	NA	Bushy	20 x 23	Dichotomous-lateral	50	7-8	Unilateral spinose spindles	Reddish brown/orange/lig ht yellow	0.55-1.5 x 0.20-0.50

Species name	Colour of colony	Colour of the polyps	Colony shape	Colony size length/wide (cm)	Branching pattern	Length of unbranched terminal branchlets (cm)	Diameter of end branchlets (mm)	Dominant sclerite type	Coenenchyme sclerites	Sclerites size length/wide (mm)
<i>Muricea crassa</i> (Breedy & Guzmán, 2016[2])	Deep brown	White or yellow	Bushy	35 x 48	Dichotomous-lateral	70	7-10	Unilateral spinose spindles	Reddish brown/lighter and darker hues	0.52-2.0 x 0.40-0.68
	Dark brown	NA	Bushy	40 x 50	Dichotomous-lateral	70	7-10	Large and irregular spindles	Reddish brown	0.56-2.5 x 0.40-0.70
<i>Muricea purpurea</i> (Breedy & Guzmán, 2016[2])	Blue and purple	Reddish orange	Bushy	16 x 22	Dichotomous	50	12-14	Leaf like-Spindles	Dark red/reddish orange	0.3-0.60 x 0.09-0.28
	Reddish purple	Reddish orange	Bushy	22 x 21	Dichotomous	50-80	9-11	Leaf like-Spindles	Dark red/reddish orange	0.3-0.70 x 0.10-0.30
<i>Muricea squarrosa</i> (Breedy & Guzmán, 2015[3])	Light to deep brown	Dull yellow to light brownish	Bushy/flabellate	19 x 13	Dichotomous	40	12-18	Spindles	Pale yellow to light brownish	1.2 x 0.20
	Light brown /brown	NA	Flabellate	14 x 12	Dichotomous	40	12-20	Spindles	Dull yellow to light brownish/whitish and colourless	1.3 x 0.23
<i>Muricea hebes</i> (Breedy & Guzmán, 2016[2])	Yellowish brown	White	Finger like / multiplanar	18 x 20	Irregularly dichotomous	2 - 6	8 - 10	Unilateral spinose spindles	Pale yellow to yellowish	0.45 – 0.83 x 0.1 – 0.45
	Yellowish brown	White	Finger like / multiplanar	-	Irregularly dichotomous	32	6 - 9	Unilateral spinose spindles	Pale yellow to yellowish	0.45 – 0.83 x 0.1 – 0.45
<i>Leptogorgia alba</i> (Breedy & Guzmán, 2007[4])	White/pale pink	White/ colourless	Flabellate	17 x 11	Irregular/pinnate	3 or less	1-2	Spindles	Colourless	0.03 x 0.14
	White	White/ colourless	Flabellate	9.5 x 11	Dichotomous/irregular	3 or less	1.0-1.5	Spindles	Colourless and few pink	0.04-0.06 x 0.18

Species name	Colour of colony	Colour of the polyps	Colony shape	Colony size length/wide (cm)	Branching pattern	Length of unbranched terminal branchlets (cm)	Diameter of end branchlets (mm)	Dominant sclerite type	Coenenchyme sclerites	Sclerites size length/wide (mm)
<i>Leptogorgia obscura</i> (Breedy & Guzmán, 2007[4])	Purple	Purple to red	Irregular/pinnate	10 x 15	Dichotomous	50	1-3	Spindles/ capstans	Violet/pink	0.06-0.12 x 0.02-0.05
	Dark violet	Violet to pink	Irregular/pinnate	4 x 4	Dichotomous	52-54	1.5-2	Capstans	Violet/pink	0.08-0.12 x 0.05
<i>Leptogorgia cf alba</i>	Pink	White	Flabelate	23 x 7	Irregular / pinnate	1.3 – 3.5	1 - 2	Spindles	White / pink	0.03 x 0.14
	Dark pink	White	Flabelate	20 x 10	Irregular /pinnate	-	-	Spindles	Pink	-
<i>Leptogorgia aequatorialis</i> (Breedy & Guzmán, 2007[4])	Deep orange	Whitish	Alternate pinnae	7 x 7	Irregular/pinnate	1.5	2.5 - 3	Blunt spindles	Orange	0.08 – 0.10 x 0.45
	Deep orange	Whitish	Alternate pinnae	7 x 7	Irregular/pinnate	1.5	2.5 - 3	Blunt spindles	Orange	0.08 – 0.10 x 0.45
<i>Leptogorgia cuspidata</i> (Breedy & Guzmán, 2007[4])	Deep orange to yellowish	Pale orange to yellow	Thick and stiff	12 x 16	Several fans	Absents o very small	Short 2-3	Blunt spindles	Orange to yellow/ colourless or bicoloured	0.06-0.012 x 0.02-0.04
	Brownish orange	NA	Fan	4 x 16	Several fans	Na	Short 0.8-1	Blunt spindles	Pink, orange, and lemon yellow bicoloured and multi-coloured	0.1 x 0.04

Supplementary Table S4

Checklist of 271 specimens of octocorals corresponding to the environmental data of *Muricea* and *Leptogorgia* in the Equatorial Front. The data are obtained from the Ocean Biology Processing Group (OBPG) of the NASA. Each data corresponds to PUCE and CENAIM samples in the geographical location of each sample.

Sample	Locality Code	Genus	Specie	SST WET [°C]	SST DRY [°C]	CHL WET [mg/m ³]	CHL DRY [mg/m ³]	PIC WET [mol/m ³]	PIC DRY [mol/m ³]	POC WET [mg/m ³]	POC DRY [mg/m ³]	PAR WET [e/m ² x day]	PAR DRY [e/m ² x day]
PUCE_1	43	<i>Leptogorgia</i>	<i>alba</i>	26.128	23.918	1.524	1.341	NO DATA	NO DATA	NO DATA	NO DATA	47.808	35.365
PUCE_2	18	<i>Leptogorgia</i>	<i>alba</i>	NO DATA	NO DATA	NO DATA	NO DATA	0.009	0.005	294.052	246.279	40.892	34.968
PUCE_3	3	<i>Leptogorgia</i>	<i>alba</i>	NO DATA	NO DATA	NO DATA	NO DATA	NO DATA	NO DATA	NO DATA	NO DATA	38.771	40.473
PUCE_4	3	<i>Leptogorgia</i>	<i>alba</i>	NO DATA	NO DATA	NO DATA	NO DATA	NO DATA	NO DATA	NO DATA	NO DATA	38.771	40.473
PUCE_5	7	<i>Leptogorgia</i>	<i>alba</i>	27.457	26.689	2.156	1.115	0.003	0.003	289.054	212.437	38.482	35.679
PUCE_6	4	<i>Leptogorgia</i>	<i>alba</i>	NO DATA	NO DATA	NO DATA	NO DATA	NO DATA	NO DATA	NO DATA	NO DATA	38.666	37.335
PUCE_7	18	<i>Leptogorgia</i>	<i>alba</i>	NO DATA	NO DATA	NO DATA	NO DATA	0.009	0.005	294.052	246.279	40.892	34.968
PUCE_8	2	<i>Leptogorgia</i>	<i>alba</i>	28.186	27.550	3.239	1.454	0.005	0.006	471.453	313.914	42.467	41.431
PUCE_9	8	<i>Leptogorgia</i>	<i>alba</i>	27.457	26.689	2.156	1.115	NO DATA	NO DATA	NO DATA	NO DATA	37.590	35.601
PUCE_10	15	<i>Leptogorgia</i>	<i>alba</i>	27.319	25.844	NO DATA	NO DATA	0.000	NO DATA	159.457	NO DATA	39.153	30.673
PUCE_11	17	<i>Leptogorgia</i>	<i>alba</i>	NO DATA	NO DATA	NO DATA	NO DATA	0.001	0.001	203.831	135.649	40.052	32.100
PUCE_12	8	<i>Leptogorgia</i>	<i>alba</i>	27.457	26.689	2.156	1.115	NO DATA	NO DATA	NO DATA	NO DATA	37.590	35.601
PUCE_13	9	<i>Leptogorgia</i>	<i>alba</i>	27.481	26.560	1.632	0.754	NO DATA	NO DATA	NO DATA	NO DATA	37.436	33.218
PUCE_14	24	<i>Leptogorgia</i>	<i>alba</i>	NO DATA	NO DATA	NO DATA	NO DATA	0.000	0.001	161.364	126.943	43.663	41.219
PUCE_15	7	<i>Leptogorgia</i>	<i>alba</i>	27.457	26.689	2.156	1.115	0.003	0.003	289.054	212.437	38.482	35.679
PUCE_16	14	<i>Leptogorgia</i>	<i>alba</i>	27.514	26.399	NO DATA	NO DATA	NO DATA	NO DATA	NO DATA	NO DATA	38.565	32.403
PUCE_17	9	<i>Leptogorgia</i>	<i>alba</i>	27.481	26.560	1.632	0.754	NO DATA	NO DATA	NO DATA	NO DATA	37.436	33.218
PUCE_18	2	<i>Leptogorgia</i>	<i>alba</i>	28.186	27.550	3.239	1.454	0.005	0.006	471.453	313.914	42.467	41.431
PUCE_19	31	<i>Leptogorgia</i>	<i>alba</i>	26.265	24.152	1.123	0.810	NO DATA	NO DATA	NO DATA	NO DATA	42.690	30.430
PUCE_20	9	<i>Leptogorgia</i>	<i>alba</i>	27.481	26.560	1.632	0.754	NO DATA	NO DATA	NO DATA	NO DATA	37.436	33.218

[illegible]

Sample	Locality Code	Genus	Specie	SST WET [°C]	SST DRY [°C]	CHL WET [mg/m³]	CHL DRY [mg/m³]	PIC WET [mol/m³]	PIC DRY [mol/m³]	POC WET [mg/m³]	POC DRY [mg/m³]	PAR WET [e/m²x day]	PAR DRY [e/m²x day]
PUCE_46	43	<i>Leptogorgia</i>	<i>alba</i>	26.128	23.918	1.524	1.341	NO DATA	NO DATA	NO DATA	NO DATA	47.808	35.365
PUCE_47	31	<i>Leptogorgia</i>	<i>alba</i>	26.265	24.152	1.123	0.810	NO DATA	NO DATA	NO DATA	NO DATA	42.690	30.430
PUCE_48	27	<i>Leptogorgia</i>	<i>alba</i>	26.390	24.920	1.573	0.629	0.001	0.001	199.325	139.540	44.249	42.604
PUCE_49	5	<i>Leptogorgia</i>	<i>alba</i>	NO DATA	NO DATA	NO DATA	NO DATA	0.003	0.004	297.390	NO DATA	38.211	35.679
PUCE_50	9	<i>Leptogorgia</i>	<i>alba</i>	27.481	26.560	1.632	0.754	NO DATA	NO DATA	NO DATA	NO DATA	37.436	33.218
PUCE_51	26	<i>Leptogorgia</i>	<i>alba</i>	26.390	24.920	1.573	0.629	0.001	0.001	199.325	139.540	44.249	42.604
PUCE_52	20	<i>Leptogorgia</i>	<i>alba</i>	NO DATA	NO DATA	NO DATA	NO DATA	0.003	0.006	272.834	259.536	42.195	34.730
PUCE_53	30	<i>Leptogorgia</i>	<i>alba</i>	25.918	24.222	0.897	0.539	0.000	0.000	136.434	112.452	47.274	34.375
PUCE_54	6	<i>Leptogorgia</i>	<i>alba</i>	NO DATA	NO DATA	NO DATA	NO DATA	0.003	0.004	297.390	NO DATA	38.211	35.679
PUCE_55	21	<i>Leptogorgia</i>	<i>alba</i>	27.228	25.415	NO DATA	NO DATA	NO DATA	NO DATA	NO DATA	NO DATA	40.507	36.872
PUCE_56	11	<i>Leptogorgia</i>	<i>alba</i>	28.874	NO DATA	NO DATA	NO DATA	NO DATA	NO DATA	NO DATA	NO DATA	38.079	33.218
PUCE_57	16	<i>Leptogorgia</i>	<i>alba</i>	27.458	26.081	NO DATA	NO DATA	0.001	0.001	213.819	130.192	39.035	29.003
PUCE_58	34	<i>Leptogorgia</i>	<i>alba</i>	NO DATA	NO DATA	NO DATA	NO DATA	NO DATA	NO DATA	NO DATA	NO DATA	44.057	27.799
PUCE_59	5	<i>Leptogorgia</i>	<i>alba</i>	NO DATA	NO DATA	NO DATA	NO DATA	0.003	0.004	297.390	NO DATA	38.211	35.679
PUCE_60	5	<i>Leptogorgia</i>	<i>alba</i>	NO DATA	NO DATA	NO DATA	NO DATA	0.003	0.004	297.390	NO DATA	38.211	35.679
PUCE_61	11	<i>Leptogorgia</i>	<i>alba</i>	28.874	NO DATA	NO DATA	NO DATA	NO DATA	NO DATA	NO DATA	NO DATA	38.079	33.218
PUCE_62	5	<i>Leptogorgia</i>	<i>alba</i>	NO DATA	NO DATA	NO DATA	NO DATA	0.003	0.004	297.390	NO DATA	38.211	35.679
PUCE_63	34	<i>Leptogorgia</i>	<i>alba</i>	NO DATA	NO DATA	NO DATA	NO DATA	NO DATA	NO DATA	NO DATA	NO DATA	44.057	27.799
PUCE_64	5	<i>Leptogorgia</i>	<i>alba</i>	NO DATA	NO DATA	NO DATA	NO DATA	0.003	0.004	297.390	NO DATA	38.211	35.679
PUCE_65	30	<i>Leptogorgia</i>	<i>alba</i>	25.918	24.222	0.897	0.539	0.000	0.000	136.434	112.452	47.274	34.375
PUCE_66	34	<i>Leptogorgia</i>	<i>alba</i>	NO DATA	NO DATA	NO DATA	NO DATA	NO DATA	NO DATA	NO DATA	NO DATA	44.057	27.799
PUCE_67	34	<i>Leptogorgia</i>	<i>alba</i>	NO DATA	NO DATA	NO DATA	NO DATA	NO DATA	NO DATA	NO DATA	NO DATA	44.057	27.799
PUCE_68	31	<i>Leptogorgia</i>	<i>alba</i>	26.265	24.152	1.123	0.810	0.000	NO DATA	177.517	NO DATA	43.406	31.885
PUCE_69	5	<i>Leptogorgia</i>	<i>alba</i>	NO DATA	NO DATA	NO DATA	NO DATA	0.003	0.004	297.390	NO DATA	38.211	35.679
PUCE_70	5	<i>Leptogorgia</i>	<i>alba</i>	NO DATA	NO DATA	NO DATA	NO DATA	0.003	0.004	294.821	NO DATA	39.412	35.679

Sample	Locality Code	Genus	Specie	SST WET [°C]	SST DRY [°C]	CHL WET [mg/m³]	CHL DRY [mg/m³]	PIC WET [mol/m³]	PIC DRY [mol/m³]	POC WET [mg/m³]	POC DRY [mg/m³]	PAR WET [e/m²x day]	PAR DRY [e/m²x day]
PUCE_71	31	<i>Leptogorgia</i>	<i>alba</i>	26.265	24.152	1.123	0.810	0.000	NO DATA	177.517	NO DATA	43.406	31.885
PUCE_72	34	<i>Leptogorgia</i>	<i>alba</i>	NO DATA	NO DATA	NO DATA	NO DATA	NO DATA	NO DATA	NO DATA	NO DATA	44.057	27.799
PUCE_73	7	<i>Leptogorgia</i>	<i>alba</i>	27.457	26.689	2.156	1.115	0.003	0.003	289.054	212.437	38.482	35.601
PUCE_74	31	<i>Leptogorgia</i>	<i>alba</i>	26.265	24.152	1.123	0.810	0.000	NO DATA	177.517	NO DATA	43.406	31.885
PUCE_75	5	<i>Leptogorgia</i>	<i>alba</i>	NO DATA	NO DATA	NO DATA	NO DATA	0.003	0.004	297.390	NO DATA	38.211	35.679
PUCE_76	34	<i>Leptogorgia</i>	<i>cuspidata</i>	NO DATA	NO DATA	NO DATA	NO DATA	NO DATA	NO DATA	NO DATA	NO DATA	44.057	27.799
PUCE_77	16	<i>Leptogorgia</i>	<i>cuspidata</i>	27.458	26.081	NO DATA	NO DATA	0.001	0.001	213.819	130.192	39.035	29.003
PUCE_78	37	<i>Leptogorgia</i>	<i>cuspidata</i>	26.774	23.466	NO DATA	NO DATA	NO DATA	NO DATA	NO DATA	NO DATA	44.515	29.581
PUCE_79	31	<i>Leptogorgia</i>	<i>cuspidata</i>	26.265	24.152	1.123	0.810	NO DATA	NO DATA	NO DATA	NO DATA	42.690	30.430
PUCE_80	29	<i>Leptogorgia</i>	<i>cuspidata</i>	26.198	24.748	1.439	0.546	NO DATA	NO DATA	NO DATA	NO DATA	45.460	42.286
PUCE_81	12	<i>Leptogorgia</i>	<i>cuspidata</i>	27.514	26.399	NO DATA	NO DATA	0.001	NO DATA	185.327	NO DATA	39.739	35.046
PUCE_82	31	<i>Leptogorgia</i>	<i>cuspidata</i>	26.265	24.152	1.123	0.810	0.000	NO DATA	177.517	NO DATA	43.406	31.885
PUCE_83	21	<i>Leptogorgia</i>	<i>taboguilla</i>	27.228	25.415	NO DATA	NO DATA	NO DATA	NO DATA	NO DATA	NO DATA	40.507	36.872
PUCE_84	5	<i>Leptogorgia</i>	<i>taboguilla</i>	NO DATA	NO DATA	NO DATA	NO DATA	0.003	0.004	297.390	NO DATA	38.211	35.679
PUCE_85	21	<i>Leptogorgia</i>	<i>taboguilla</i>	27.228	25.415	NO DATA	NO DATA	NO DATA	NO DATA	NO DATA	NO DATA	40.507	36.872
PUCE_86	7	<i>Leptogorgia</i>	<i>taboguilla</i>	27.457	26.689	2.156	1.115	0.003	0.003	289.054	212.437	38.482	35.679
PUCE_87	7	<i>Leptogorgia</i>	<i>taboguilla</i>	27.457	26.689	2.156	1.115	0.003	0.003	289.054	212.437	38.482	35.679
PUCE_88	8	<i>Leptogorgia</i>	<i>taboguilla</i>	27.457	26.689	2.156	1.115	NO DATA	NO DATA	NO DATA	NO DATA	37.590	35.601
PUCE_89	24	<i>Leptogorgia</i>	<i>obscura</i>	NO DATA	NO DATA	NO DATA	NO DATA	0.000	0.001	161.364	126.943	43.663	41.219
PUCE_90	7	<i>Leptogorgia</i>	<i>obscura</i>	27.457	26.689	2.156	1.115	0.003	0.003	289.054	212.437	38.482	35.679
PUCE_91	24	<i>Leptogorgia</i>	<i>obscura</i>	NO DATA	NO DATA	NO DATA	NO DATA	0.000	0.001	161.364	126.943	43.663	41.219
PUCE_92	44	<i>Leptogorgia</i>	<i>obscura</i>	NO DATA	NO DATA	NO DATA	NO DATA	NO DATA	NO DATA	NO DATA	NO DATA	45.723	41.132
PUCE_93	7	<i>Leptogorgia</i>	<i>obscura</i>	27.457	26.689	2.156	1.115	0.003	0.003	289.054	212.437	38.482	35.601
PUCE_94	42	<i>Leptogorgia</i>	<i>obscura</i>	25.958	23.735	1.476	1.155	0.001	0.001	215.450	198.700	48.231	36.093
PUCE_95	20	<i>Leptogorgia</i>	<i>obscura</i>	NO DATA	NO DATA	NO DATA	NO DATA	0.003	0.006	273.051	259.627	41.957	32.917

Sample	Locality Code	Genus	Specie	SST WET [°C]	SST DRY [°C]	CHL WET [mg/m³]	CHL DRY [mg/m³]	PIC WET [mol/m³]	PIC DRY [mol/m³]	POC WET [mg/m³]	POC DRY [mg/m³]	PAR WET [e/m²x day]	PAR DRY [e/m²x day]
PUCE_96	7	<i>Leptogorgia</i>	<i>obscura</i>	27.457	26.689	2.156	1.115	0.003	0.003	289.054	212.437	38.482	35.679
PUCE_97	31	<i>Leptogorgia</i>	<i>obscura</i>	NO DATA	NO DATA	NO DATA	NO DATA	NO DATA	NO DATA	NO DATA	NO DATA	42.690	30.430
PUCE_98	24	<i>Leptogorgia</i>	<i>obscura</i>	NO DATA	NO DATA	NO DATA	NO DATA	0.000	0.001	161.364	126.943	43.663	41.219
PUCE_99	35	<i>Leptogorgia</i>	<i>obscura</i>	26.306	23.819	NO DATA	NO DATA	0.000	0.000	147.151	133.714	44.623	25.571
PUCE_100	31	<i>Leptogorgia</i>	<i>obscura</i>	26.265	24.152	1.123	0.810	NO DATA	NO DATA	NO DATA	NO DATA	42.690	30.430
PUCE_101	19	<i>Leptogorgia</i>	<i>obscura</i>	28.468	NO DATA	NO DATA	NO DATA	0.007	NO DATA	NO DATA	NO DATA	41.670	36.427
PUCE_102	24	<i>Leptogorgia</i>	<i>obscura</i>	NO DATA	NO DATA	NO DATA	NO DATA	0.000	0.001	161.364	126.943	43.663	41.219
PUCE_103	24	<i>Leptogorgia</i>	<i>obscura</i>	NO DATA	NO DATA	NO DATA	NO DATA	0.000	0.001	161.364	126.943	43.663	41.219
PUCE_104	27	<i>Leptogorgia</i>	<i>obscura</i>	26.390	24.920	1.573	0.629	0.001	0.001	199.325	139.540	44.249	42.604
PUCE_105	27	<i>Leptogorgia</i>	<i>obscura</i>	26.390	24.920	1.573	0.629	0.001	0.001	199.325	139.540	44.249	42.604
PUCE_106	20	<i>Leptogorgia</i>	<i>obscura</i>	NO DATA	NO DATA	NO DATA	NO DATA	0.003	0.006	273.051	259.627	41.957	33.085
PUCE_107	23	<i>Leptogorgia</i>	<i>obscura</i>	27.228	25.415	NO DATA	NO DATA	NO DATA	NO DATA	NO DATA	NO DATA	41.482	37.160
PUCE_108	6	<i>Leptogorgia</i>	<i>obscura</i>	NO DATA	NO DATA	NO DATA	NO DATA	0.003	0.004	297.390	NO DATA	38.211	35.679
PUCE_109	44	<i>Leptogorgia</i>	<i>obscura</i>	NO DATA	NO DATA	NO DATA	NO DATA	NO DATA	NO DATA	NO DATA	NO DATA	45.894	41.132
PUCE_110	31	<i>Leptogorgia</i>	<i>obscura</i>	NO DATA	NO DATA	NO DATA	NO DATA	NO DATA	NO DATA	NO DATA	NO DATA	42.690	30.430
PUCE_111	27	<i>Leptogorgia</i>	<i>obscura</i>	26.390	24.920	1.573	0.629	0.001	0.001	199.325	139.540	44.249	42.604
PUCE_112	25	<i>Leptogorgia</i>	<i>obscura</i>	NO DATA	NO DATA	NO DATA	NO DATA	0.001	0.001	173.787	132.555	43.395	42.744
PUCE_113	5	<i>Leptogorgia</i>	<i>obscura</i>	NO DATA	NO DATA	NO DATA	NO DATA	0.003	0.004	300.268	NO DATA	39.270	35.679
PUCE_114	7	<i>Leptogorgia</i>	<i>obscura</i>	27.457	26.689	2.156	1.115	0.003	0.003	289.054	212.437	38.482	35.679
PUCE_115	25	<i>Leptogorgia</i>	<i>obscura</i>	NO DATA	NO DATA	NO DATA	NO DATA	0.001	0.001	173.787	132.555	43.395	42.744
PUCE_116	22	<i>Leptogorgia</i>	<i>obscura</i>	27.228	25.415	NO DATA	NO DATA	0.003	0.003	254.848	NO DATA	41.609	37.160
PUCE_117	28	<i>Leptogorgia</i>	<i>obscura</i>	26.198	24.748	1.439	0.546	0.001	0.001	193.789	131.172	44.493	42.594
PUCE_118	44	<i>Leptogorgia</i>	<i>obscura</i>	NO DATA	NO DATA	NO DATA	NO DATA	NO DATA	NO DATA	NO DATA	NO DATA	45.337	41.132
PUCE_119	44	<i>Leptogorgia</i>	<i>obscura</i>	NO DATA	NO DATA	NO DATA	NO DATA	NO DATA	NO DATA	NO DATA	NO DATA	45.581	41.132
PUCE_120	18	<i>Leptogorgia</i>	<i>obscura</i>	NO DATA	NO DATA	NO DATA	NO DATA	0.009	0.005	294.052	246.279	40.892	34.968

[illegible]

Sample	Locality Code	Genus	Specie	SST WET [°C]	SST DRY [°C]	CHL WET [mg/m³]	CHL DRY [mg/m³]	PIC WET [mol/m³]	PIC DRY [mol/m³]	POC WET [mg/m³]	POC DRY [mg/m³]	PAR WET [e/m²x day]	PAR DRY [e/m²x day]
PUCE_146	10	<i>Leptogorgia</i>	<i>cuspidata</i>	28.874	NO DATA	NO DATA	NO DATA	NO DATA	NO DATA	NO DATA	NO DATA	38.079	33.218
PUCE_147	10	<i>Muricea</i>	<i>purpurea</i>	28.874	NO DATA	NO DATA	NO DATA	NO DATA	NO DATA	NO DATA	NO DATA	37.436	33.218
PUCE_148	10	<i>Muricea</i>	<i>purpurea</i>	28.874	NO DATA	NO DATA	NO DATA	NO DATA	NO DATA	NO DATA	NO DATA	38.079	33.218
PUCE_149	10	<i>Leptogorgia</i>	<i>sp1</i>	27.481	26.560	1.632	0.754	NO DATA	NO DATA	NO DATA	NO DATA	37.436	33.218
PUCE_150	5	<i>Muricea</i>	<i>purpurea</i>	NO DATA	NO DATA	NO DATA	NO DATA	0.003	0.004	300.268	NO DATA	39.270	35.679
PUCE_151	31	<i>Leptogorgia</i>	<i>pumila</i>	26.265	24.152	1.123	0.810	NO DATA	NO DATA	NO DATA	NO DATA	42.690	30.430
PUCE_152	24	<i>Leptogorgia</i>	<i>sp2</i>	NO DATA	NO DATA	NO DATA	NO DATA	0.000	0.001	161.364	126.943	43.663	41.219
PUCE_153	24	<i>Leptogorgia</i>	<i>sp2</i>	NO DATA	NO DATA	NO DATA	NO DATA	0.000	0.001	161.364	126.943	43.663	41.219
PUCE_154	7	<i>Leptogorgia</i>	<i>pumila</i>	27.457	26.689	2.156	1.115	0.003	0.003	289.054	212.437	38.482	35.601
PUCE_155	31	<i>Leptogorgia</i>	<i>pumila</i>	NO DATA	NO DATA	NO DATA	NO DATA	NO DATA	NO DATA	NO DATA	NO DATA	42.690	30.430
PUCE_156	31	<i>Leptogorgia</i>	<i>alba</i>	NO DATA	NO DATA	NO DATA	NO DATA	NO DATA	NO DATA	NO DATA	NO DATA	42.690	30.430
PUCE_157	4	<i>Leptogorgia</i>	<i>alba</i>	NO DATA	NO DATA	NO DATA	NO DATA	NO DATA	NO DATA	NO DATA	NO DATA	38.666	37.335
PUCE_158	3	<i>Leptogorgia</i>	<i>alba</i> cf. <i>rosa</i>	NO DATA	NO DATA	NO DATA	NO DATA	NO DATA	NO DATA	NO DATA	NO DATA	38.771	40.473
PUCE_159	3	<i>Leptogorgia</i>	<i>alba</i> cf. <i>rosa</i>	NO DATA	NO DATA	NO DATA	NO DATA	NO DATA	NO DATA	NO DATA	NO DATA	38.771	40.473
PUCE_160	4	<i>Leptogorgia</i>	<i>alba</i> cf. <i>rosa</i>	NO DATA	NO DATA	NO DATA	NO DATA	NO DATA	NO DATA	NO DATA	NO DATA	38.666	37.335
PUCE_161	31	<i>Muricea</i>	<i>purpurea</i>	26.265	24.152	1.123	0.810	NO DATA	NO DATA	NO DATA	NO DATA	42.690	30.430
PUCE_162	8	<i>Muricea</i>	<i>purpurea</i>	27.457	26.689	2.156	1.115	NO DATA	NO DATA	NO DATA	NO DATA	37.590	35.601
PUCE_163	37	<i>Muricea</i>	<i>purpurea</i>	26.774	23.466	NO DATA	NO DATA	NO DATA	NO DATA	NO DATA	NO DATA	44.283	29.581
PUCE_164	13	<i>Muricea</i>	<i>purpurea</i>	27.514	26.399	NO DATA	NO DATA	0.001	NO DATA	185.327	NO DATA	39.739	35.046
PUCE_165	31	<i>Muricea</i>	<i>purpurea</i>	26.265	24.152	1.123	0.810	NO DATA	NO DATA	NO DATA	NO DATA	42.690	30.430
PUCE_166	14	<i>Muricea</i>	<i>purpurea</i>	27.514	26.399	NO DATA	NO DATA	NO DATA	NO DATA	NO DATA	NO DATA	39.130	32.403
PUCE_167	7	<i>Muricea</i>	<i>purpurea</i>	27.457	26.689	2.156	1.115	0.003	0.003	289.054	212.437	38.482	35.679
PUCE_168	31	<i>Muricea</i>	<i>purpurea</i>	26.265	24.152	1.123	0.810	NO DATA	NO DATA	NO DATA	NO DATA	42.690	30.430
PUCE_169	31	<i>Muricea</i>	<i>purpurea</i>	26.265	24.152	1.123	0.810	NO DATA	NO DATA	NO DATA	NO DATA	42.690	30.430
PUCE_170	35	<i>Muricea</i>	<i>purpurea</i>	26.306	23.819	NO DATA	NO DATA	0.000	0.000	147.151	133.714	44.623	25.571

Sample	Locality Code	Genus	Specie	SST WET [°C]	SST DRY [°C]	CHL WET [mg/m³]	CHL DRY [mg/m³]	PIC WET [mol/m³]	PIC DRY [mol/m³]	POC WET [mg/m³]	POC DRY [mg/m³]	PAR WET [e/m²x day]	PAR DRY [e/m²x day]
PUCE_171	34	<i>Muricea</i>	<i>purpurea</i>	NO DATA	NO DATA	NO DATA	NO DATA	NO DATA	NO DATA	NO DATA	NO DATA	44.276	27.799
PUCE_172	12	<i>Muricea</i>	<i>purpurea</i>	27.514	26.399	NO DATA	NO DATA	0.001	NO DATA	185.327	NO DATA	39.739	35.046
PUCE_173	8	<i>Muricea</i>	<i>purpurea</i>	27.457	26.689	2.156	1.115	0.002	0.003	281.875	207.060	38.666	35.601
PUCE_174	36	<i>Muricea</i>	<i>purpurea</i>	27.455	21.653	NO DATA	NO DATA	0.000	NO DATA	132.878	NO DATA	42.744	25.903
PUCE_175	31	<i>Muricea</i>	<i>purpurea</i>	26.265	24.152	1.123	0.810	NO DATA	NO DATA	NO DATA	NO DATA	42.690	30.430
PUCE_176	31	<i>Muricea</i>	<i>purpurea</i>	26.265	24.152	1.123	0.810	0.000	NO DATA	177.517	NO DATA	43.406	31.885
PUCE_177	31	<i>Muricea</i>	<i>purpurea</i>	26.265	24.152	1.123	0.810	NO DATA	NO DATA	NO DATA	NO DATA	42.690	30.430
PUCE_178	34	<i>Muricea</i>	<i>purpurea</i>	NO DATA	NO DATA	NO DATA	NO DATA	NO DATA	NO DATA	NO DATA	NO DATA	44.057	27.799
PUCE_179	8	<i>Muricea</i>	<i>purpurea</i>	27.457	26.689	2.156	1.115	NO DATA	NO DATA	NO DATA	NO DATA	37.590	35.601
PUCE_180	34	<i>Muricea</i>	<i>purpurea</i>	NO DATA	NO DATA	NO DATA	NO DATA	NO DATA	NO DATA	NO DATA	NO DATA	44.057	27.799
PUCE_181	7	<i>Muricea</i>	<i>purpurea</i>	27.457	26.689	2.156	1.115	0.003	0.003	289.054	212.437	38.482	35.679
PUCE_182	37	<i>Muricea</i>	<i>purpurea</i>	26.774	23.466	NO DATA	NO DATA	NO DATA	NO DATA	NO DATA	NO DATA	44.283	29.581
PUCE_183	9	<i>Muricea</i>	<i>purpurea</i>	27.481	26.560	1.632	0.754	NO DATA	NO DATA	NO DATA	NO DATA	37.436	33.218
PUCE_184	5	<i>Muricea</i>	<i>purpurea</i>	NO DATA	NO DATA	NO DATA	NO DATA	0.003	0.004	294.821	NO DATA	39.412	35.679
PUCE_185	31	<i>Muricea</i>	<i>purpurea</i>	26.265	24.152	1.123	0.810	NO DATA	NO DATA	NO DATA	NO DATA	42.690	30.430
PUCE_186	33	<i>Muricea</i>	<i>purpurea</i>	26.180	24.316	NO DATA	NO DATA	NO DATA	NO DATA	NO DATA	NO DATA	NO DATA	32.398
PUCE_187	17	<i>Muricea</i>	<i>purpurea</i>	NO DATA	NO DATA	NO DATA	NO DATA	0.001	0.001	203.831	135.649	40.052	32.100
PUCE_188	36	<i>Muricea</i>	<i>purpurea</i>	27.455	21.653	NO DATA	NO DATA	0.000	NO DATA	132.878	NO DATA	42.744	25.903
PUCE_189	8	<i>Muricea</i>	<i>purpurea</i>	27.457	26.689	2.156	1.115	0.003	0.003	289.054	212.437	38.482	35.601
PUCE_190	8	<i>Muricea</i>	<i>purpurea</i>	27.457	26.689	2.156	1.115	0.003	0.003	289.054	212.437	38.482	35.679
PUCE_191	31	<i>Muricea</i>	<i>purpurea</i>	26.265	24.152	1.123	0.810	NO DATA	NO DATA	NO DATA	NO DATA	42.690	30.430
PUCE_192	18	<i>Muricea</i>	<i>purpurea</i>	NO DATA	NO DATA	NO DATA	NO DATA	0.009	0.005	294.052	246.279	40.892	34.968
PUCE_193	31	<i>Muricea</i>	sp1	26.265	24.152	1.123	0.810	NO DATA	NO DATA	NO DATA	NO DATA	42.690	30.430
PUCE_194	24	<i>Muricea</i>	sp1	NO DATA	NO DATA	NO DATA	NO DATA	0.000	0.001	161.364	126.943	43.663	41.219
PUCE_195	31	<i>Muricea</i>	sp1	26.265	24.152	1.123	0.810	NO DATA	NO DATA	NO DATA	NO DATA	42.690	30.430

Sample	Locality Code	Genus	Specie	SST WET [°C]	SST DRY [°C]	CHL WET [mg/m³]	CHL DRY [mg/m³]	PIC WET [mol/m³]	PIC DRY [mol/m³]	POC WET [mg/m³]	POC DRY [mg/m³]	PAR WET [e/m²x day]	PAR DRY [e/m²x day]
PUCE_196	31	<i>Muricea</i>	sp1	26.265	24.152	1.123	0.810	0.000	NO DATA	177.517	NO DATA	43.406	31.885
PUCE_197	31	<i>Muricea</i>	sp1	26.265	24.152	1.123	0.810	NO DATA	NO DATA	NO DATA	NO DATA	42.690	30.430
PUCE_198	14	<i>Muricea</i>	<i>fruticosa</i>	27.514	26.399	NO DATA	NO DATA	NO DATA	NO DATA	NO DATA	NO DATA	38.565	32.084
PUCE_199	42	<i>Muricea</i>	<i>fruticosa</i>	25.958	23.735	1.476	1.155	0.001	0.001	215.450	198.700	48.231	36.093
PUCE_200	18	<i>Muricea</i>	<i>fruticosa</i>	NO DATA	NO DATA	NO DATA	NO DATA	0.009	0.005	294.052	246.279	40.892	34.968
PUCE_201	27	<i>Muricea</i>	<i>fruticosa</i>	26.390	24.920	1.573	0.629	0.001	0.001	199.325	139.540	44.249	42.604
PUCE_202	31	<i>Muricea</i>	<i>fruticosa</i>	26.265	24.152	1.123	0.810	0.000	NO DATA	177.517	NO DATA	43.406	31.885
PUCE_203	14	<i>Muricea</i>	<i>fruticosa</i>	27.514	26.399	NO DATA	NO DATA	NO DATA	NO DATA	NO DATA	NO DATA	38.565	32.084
PUCE_204	10	<i>Muricea</i>	<i>fruticosa</i>	28.874	NO DATA	NO DATA	NO DATA	NO DATA	NO DATA	NO DATA	NO DATA	38.079	33.218
PUCE_205	31	<i>Muricea</i>	<i>fruticosa</i>	26.265	24.152	1.123	0.810	0.000	NO DATA	177.517	NO DATA	43.406	31.885
PUCE_206	31	<i>Muricea</i>	<i>fruticosa</i>	26.265	24.152	1.123	0.810	0.000	NO DATA	177.517	NO DATA	43.406	31.885
PUCE_207	18	<i>Muricea</i>	<i>fruticosa</i>	NO DATA	NO DATA	NO DATA	NO DATA	0.009	0.005	294.052	246.279	40.892	34.968
PUCE_208	8	<i>Muricea</i>	<i>fruticosa</i>	27.457	26.689	2.156	1.115	NO DATA	NO DATA	NO DATA	NO DATA	37.590	35.601
PUCE_209	42	<i>Muricea</i>	<i>fruticosa</i>	25.958	23.735	1.476	1.155	0.001	0.001	215.450	198.700	48.231	36.093
PUCE_210	14	<i>Muricea</i>	<i>fruticosa</i>	27.514	26.399	NO DATA	NO DATA	NO DATA	NO DATA	NO DATA	NO DATA	38.565	32.084
PUCE_211	18	<i>Muricea</i>	<i>fruticosa</i>	NO DATA	NO DATA	NO DATA	NO DATA	0.009	0.005	294.052	246.279	40.892	34.968
PUCE_212	18	<i>Muricea</i>	<i>fruticosa</i>	NO DATA	NO DATA	NO DATA	NO DATA	0.009	0.005	294.052	246.279	40.892	34.968
PUCE_213	8	<i>Muricea</i>	<i>fruticosa</i>	27.457	26.689	2.156	1.115	0.003	0.003	289.054	212.437	38.482	35.679
PUCE_214	8	<i>Muricea</i>	<i>fruticosa</i>	27.457	26.689	2.156	1.115	NO DATA	NO DATA	NO DATA	NO DATA	37.590	35.601
PUCE_215	9	<i>Muricea</i>	<i>fruticosa</i>	27.481	26.560	1.632	0.754	NO DATA	NO DATA	NO DATA	NO DATA	37.436	33.218
PUCE_216	31	<i>Muricea</i>	<i>fruticosa</i>	26.265	24.152	1.123	0.810	0.000	NO DATA	177.517	NO DATA	43.406	31.885
PUCE_217	35	<i>Muricea</i>	<i>fruticosa</i>	26.306	23.819	NO DATA	NO DATA	0.000	0.000	147.151	133.714	44.623	27.195
PUCE_218	31	<i>Muricea</i>	<i>fruticosa</i>	26.265	24.152	1.123	0.810	0.000	NO DATA	177.517	NO DATA	43.406	31.885
PUCE_219	31	<i>Muricea</i>	<i>fruticosa</i>	26.265	24.152	1.123	0.810	0.000	NO DATA	177.517	NO DATA	43.406	31.885
PUCE_220	42	<i>Muricea</i>	<i>fruticosa</i>	25.958	23.735	1.476	1.155	0.001	0.001	215.450	198.700	48.231	36.093

Sample	Locality Code	Genus	Specie	SST WET [°C]	SST DRY [°C]	CHL WET [mg/m³]	CHL DRY [mg/m³]	PIC WET [mol/m³]	PIC DRY [mol/m³]	POC WET [mg/m³]	POC DRY [mg/m³]	PAR WET [e/m²x day]	PAR DRY [e/m²x day]
PUCE_221	44	<i>Muricea</i>	<i>fruticosa</i>	NO DATA	NO DATA	NO DATA	NO DATA	NO DATA	NO DATA	NO DATA	NO DATA	45.581	41.132
PUCE_222	31	<i>Muricea</i>	<i>fruticosa</i>	26.265	24.152	1.123	0.810	0.000	NO DATA	177.517	NO DATA	43.406	31.885
PUCE_223	31	<i>Muricea</i>	<i>fruticosa</i>	26.265	24.152	1.123	0.810	0.000	NO DATA	177.517	NO DATA	43.406	31.885
PUCE_224	18	<i>Muricea</i>	<i>fruticosa</i>	NO DATA	NO DATA	NO DATA	NO DATA	0.009	0.005	294.052	246.279	40.892	34.968
PUCE_225	18	<i>Muricea</i>	<i>fruticosa</i>	NO DATA	NO DATA	NO DATA	NO DATA	0.009	0.005	294.052	246.279	40.892	34.968
PUCE_226	31	<i>Muricea</i>	<i>fruticosa</i>	NO DATA	NO DATA	NO DATA	NO DATA	NO DATA	NO DATA	NO DATA	NO DATA	42.690	30.430
PUCE_227	24	<i>Muricea</i>	<i>fruticosa</i>	NO DATA	NO DATA	NO DATA	NO DATA	0.000	0.001	161.364	126.943	43.663	41.219
PUCE_228	20	<i>Muricea</i>	<i>fruticosa</i>	NO DATA	NO DATA	NO DATA	NO DATA	0.003	0.006	271.154	255.646	41.981	32.917
PUCE_229	24	<i>Muricea</i>	<i>fruticosa</i>	NO DATA	NO DATA	NO DATA	NO DATA	0.000	0.001	161.364	126.943	43.663	41.219
PUCE_230	36	<i>Muricea</i>	<i>fruticosa</i>	27.455	21.653	NO DATA	NO DATA	0.000	NO DATA	132.878	NO DATA	42.744	25.903
PUCE_231	18	<i>Muricea</i>	<i>fruticosa</i>	NO DATA	NO DATA	NO DATA	NO DATA	0.009	0.005	294.052	246.279	40.892	34.968
PUCE_232	36	<i>Muricea</i>	<i>crassa</i>	27.455	21.653	NO DATA	NO DATA	0.000	NO DATA	132.878	NO DATA	42.744	25.903
PUCE_233	2	<i>Muricea</i>	<i>squarrosa</i>	28.186	27.550	3.239	1.454	0.005	0.006	471.453	313.914	42.467	41.431
PUCE_234	37	<i>Muricea</i>	<i>plantaginea</i>	26.774	23.466	NO DATA	NO DATA	NO DATA	NO DATA	NO DATA	NO DATA	44.283	29.581
PUCE_235	44	<i>Muricea</i>	<i>plantaginea</i>	NO DATA	NO DATA	NO DATA	NO DATA	NO DATA	NO DATA	NO DATA	NO DATA	45.894	41.132
PUCE_236	2	<i>Muricea</i>	<i>squarrosa</i>	28.186	27.550	3.239	1.454	0.005	0.006	471.453	313.914	42.467	41.431
PUCE_237	18	<i>Muricea</i>	<i>squarrosa</i>	NO DATA	NO DATA	NO DATA	NO DATA	0.009	0.005	294.052	246.279	40.892	34.968
PUCE_238	18	<i>Muricea</i>	<i>crassa</i>	NO DATA	NO DATA	NO DATA	NO DATA	0.010	0.006	302.005	254.867	40.803	34.968
PUCE_239	42	<i>Leptogorgia</i>	<i>taboguilla</i>	25.958	23.735	1.476	1.155	0.001	0.001	215.450	198.700	48.231	36.093
PUCE_240	5	<i>Leptogorgia</i>	<i>taboguilla</i>	NO DATA	NO DATA	NO DATA	NO DATA	0.003	0.004	297.390	NO DATA	38.211	35.679
PUCE_241	13	<i>Leptogorgia</i>	<i>cuspidata</i>	27.514	26.399	NO DATA	NO DATA	0.001	NO DATA	185.327	NO DATA	39.739	35.046
PUCE_242	8	<i>Leptogorgia</i>	<i>cuspidata</i>	27.457	26.689	2.156	1.115	NO DATA	NO DATA	NO DATA	NO DATA	37.590	35.601
PUCE_243	31	<i>Leptogorgia</i>	<i>cuspidata</i>	NO DATA	NO DATA	NO DATA	NO DATA	NO DATA	NO DATA	NO DATA	NO DATA	42.690	30.430
CENAIM_1	38	<i>Muricea</i>	<i>squarrosa</i>	26.230	23.962	1.043	0.761	0.000	0.000	156.641	135.942	46.276	35.072
CENAIM_2	38	<i>Muricea</i>	<i>plantaginea</i>	26.230	23.962	1.043	0.761	0.000	0.000	156.641	135.942	46.276	35.072

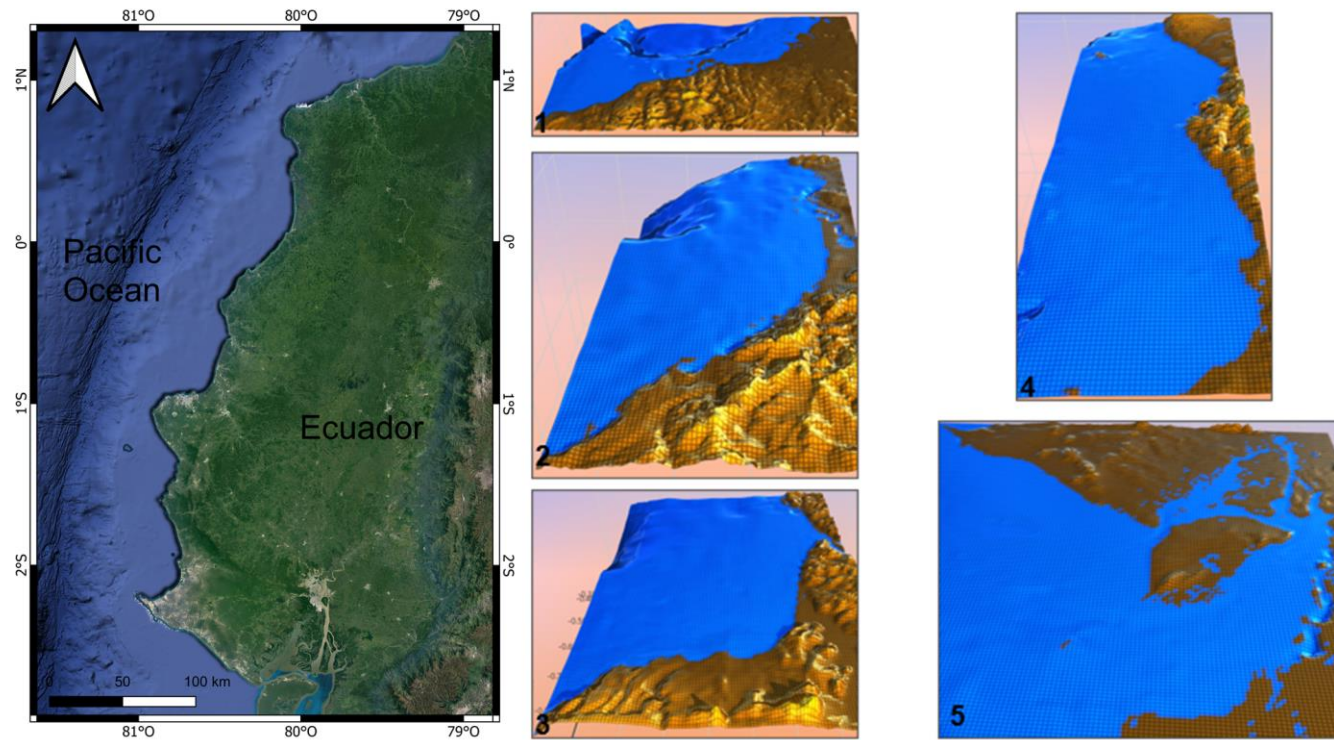
Sample	Locality Code	Genus	Specie	SST WET [°C]	SST DRY [°C]	CHL WET [mg/m³]	CHL DRY [mg/m³]	PIC WET [mol/m³]	PIC DRY [mol/m³]	POC WET [mg/m³]	POC DRY [mg/m³]	PAR WET [e/m²x day]	PAR DRY [e/m²x day]
CENAIM_3	38	<i>Muricea</i>	<i>fruticosa</i>	26.230	23.962	1.043	0.761	0.000	0.000	156.641	135.942	46.276	35.072
CENAIM_4	38	<i>Muricea</i>	<i>austera</i>	26.230	23.962	1.043	0.761	0.000	0.000	156.641	135.942	46.276	35.072
CENAIM_5	38	<i>Muricea</i>	<i>purpurea</i>	26.230	23.962	1.043	0.761	0.000	0.000	156.641	135.942	46.276	35.072
CENAIM_6	38	<i>Leptogorgia</i>	<i>taboguilla</i>	26.230	23.962	1.043	0.761	0.000	0.000	156.641	135.942	46.276	35.072
CENAIM_7	38	<i>Leptogorgia</i>	<i>alba</i>	26.230	23.962	1.043	0.761	0.000	0.000	156.641	135.942	46.276	35.072
CENAIM_8	38	<i>Muricea</i>	<i>crassa</i>	26.230	23.962	1.043	0.761	0.000	0.000	156.641	135.942	46.276	35.072
CENAIM_9	38	<i>Leptogorgia</i>	<i>alba</i> cf <i>rosa</i>	26.230	23.962	1.043	0.761	0.000	0.000	156.641	135.942	46.276	35.072
CENAIM_10	41	<i>Leptogorgia</i>	<i>obscura</i>	26.230	23.962	1.043	0.761	0.000	0.000	156.641	135.942	46.276	35.072
CENAIM_11	39	<i>Leptogorgia</i>	<i>pumila</i>	26.230	23.962	1.043	0.761	0.000	0.000	156.641	135.942	46.276	35.072
CENAIM_12	39	<i>Leptogorgia</i>	<i>cuspidata</i>	26.230	23.962	1.043	0.761	0.000	0.000	156.641	135.942	46.276	35.072
CENAIM_13	38	<i>Leptogorgia</i>	<i>obscura</i>	NO DATA	NO DATA	NO DATA	NO DATA	0.000	0.001	177.034	156.450	45.852	35.677
CENAIM_14	38	<i>Leptogorgia</i>	<i>pumila</i>	NO DATA	NO DATA	NO DATA	NO DATA	0.000	0.001	177.034	156.450	45.852	35.677
CENAIM_15	38	<i>Muricea</i>	<i>purpurea</i>	NO DATA	NO DATA	NO DATA	NO DATA	0.000	0.001	177.034	156.450	45.852	35.677
CENAIM_16	38	<i>Leptogorgia</i>	<i>cuspidata</i>	NO DATA	NO DATA	NO DATA	NO DATA	NO DATA	NO DATA	NO DATA	NO DATA	46.308	37.758
CENAIM_17	38	<i>Muricea</i>	<i>hebes</i>	26.230	23.962	1.043	0.761	0.000	0.000	156.641	135.942	46.276	35.072
PUCE_244	31	<i>Muricea</i>	<i>hebes</i>	NO DATA	NO DATA	NO DATA	NO DATA	NO DATA	NO DATA	NO DATA	NO DATA	42.690	30.430
PUCE_245	31	<i>Muricea</i>	<i>hebes</i>	NO DATA	NO DATA	NO DATA	NO DATA	NO DATA	NO DATA	NO DATA	NO DATA	42.690	30.430
PUCE_246	36	<i>Muricea</i>	<i>plantaginea</i>	27.455	21.653	NO DATA	NO DATA	0.000	NO DATA	132.878	NO DATA	42.744	27.179
PUCE_247	34	<i>Muricea</i>	<i>plantaginea</i>	NO DATA	NO DATA	NO DATA	NO DATA	NO DATA	NO DATA	NO DATA	NO DATA	44.057	27.799
PUCE_248	20	<i>Muricea</i>	<i>plantaginea</i>	NO DATA	NO DATA	NO DATA	NO DATA	0.003	0.006	273.051	259.627	41.957	33.085
PUCE_249	37	<i>Muricea</i>	<i>plantaginea</i>	26.774	23.466	NO DATA	NO DATA	NO DATA	NO DATA	NO DATA	NO DATA	44.515	29.581
PUCE_250	18	<i>Muricea</i>	<i>plantaginea</i>	NO DATA	NO DATA	NO DATA	NO DATA	0.010	0.006	302.005	254.867	40.803	34.968
PUCE_251	37	<i>Muricea</i>	<i>plantaginea</i>	26.774	23.466	NO DATA	NO DATA	NO DATA	NO DATA	NO DATA	NO DATA	44.283	29.581
PUCE_252	21	<i>Muricea</i>	<i>plantaginea</i>	27.228	25.415	NO DATA	NO DATA	NO DATA	NO DATA	NO DATA	NO DATA	40.507	36.872
PUCE_253	40	<i>Muricea</i>	<i>plantaginea</i>	26.230	23.962	1.043	0.761	0.000	0.001	177.034	156.450	45.852	36.878

Sample	Locality Code	Genus	Specie	SST WET [°C]	SST DRY [°C]	CHL WET [mg/m³]	CHL DRY [mg/m³]	PIC WET [mol/m³]	PIC DRY [mol/m³]	POC WET [mg/m³]	POC DRY [mg/m³]	PAR WET [e/m²x day]	PAR DRY [e/m²x day]
PUCE_254	21	<i>Muricea</i>	<i>plantaginea</i>	27.228	25.415	NO DATA	NO DATA	NO DATA	NO DATA	NO DATA	NO DATA	40.507	36.872
PUCE_255	18	<i>Muricea</i>	<i>plantaginea</i>	NO DATA	NO DATA	NO DATA	NO DATA	0.010	0.006	302.005	254.867	40.803	34.968
PUCE_256	30	<i>Muricea</i>	<i>plantaginea</i>	25.918	24.222	0.897	0.539	0.000	0.000	136.434	112.452	47.274	34.375

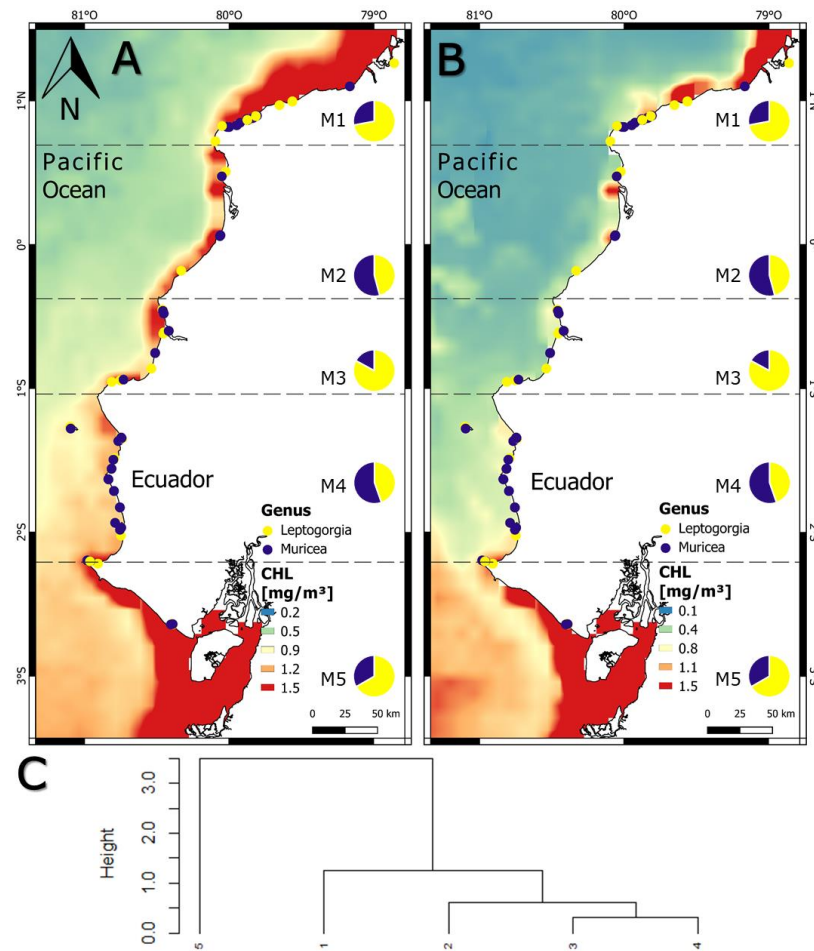
Supplementary Table S5

Pearson Correlation Coefficient method applied to the environmental variables in the study. The variables marked (*) are the selected for the further analyses.

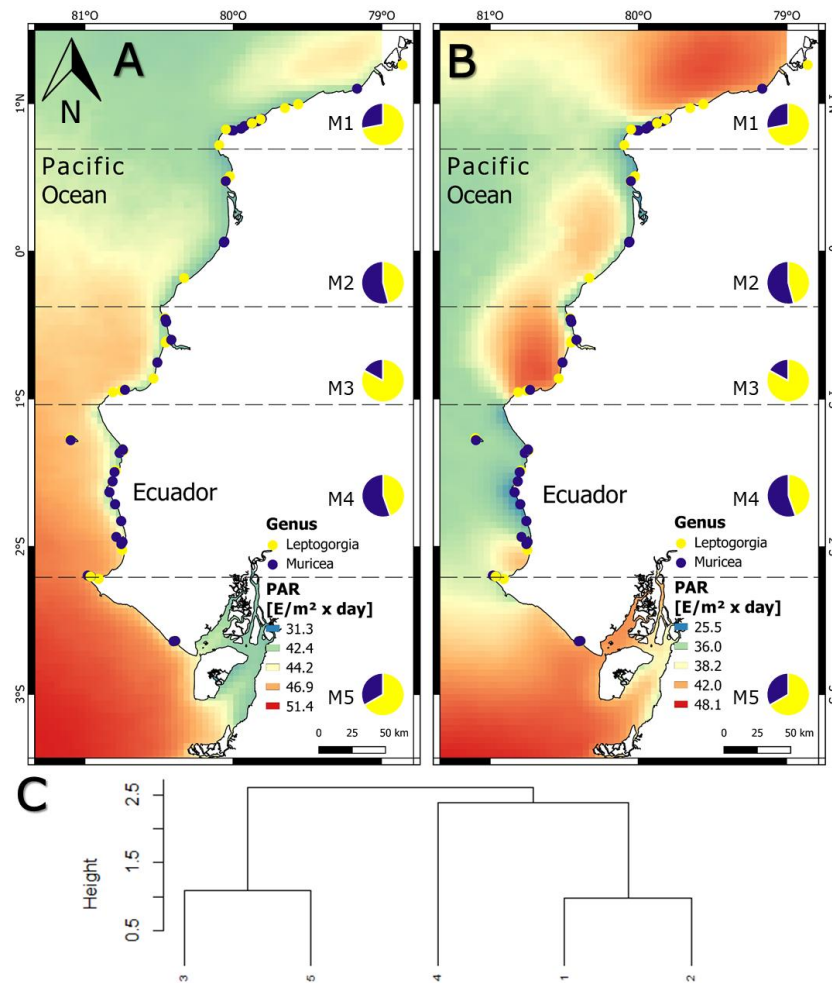
	SST*	CHL*	PIC	POC	PAR*
SST	1.000				
CHL	0.905	1.000			
PIC	0.949	0.984	1.000		
POC	0.877	0.991	0.981	1.000	
PAR	-0.591	-0.383	-0.459	-0.312	1.000



Supplementary Figure S1. Tridimensionality map of the five macrozones of the Equatorial Front considering the orography and submarine slopes of the coastline in a three-dimensional diagram. Source: Observational Geoportal (GEOOs).



Supplementary Figure S2. Chlorophyll-a concentration map (CHL-a) in mg/m^3 represented in a scale from blue (less concentration) to red (high concentration) the corresponding distribution of *Leptogorgia* species (yellow) and *Muricea* species (blue) **A.** Chlorophyll-a concentration in the wet season (December - May). **B.** Chlorophyll-a concentration in the dry season (June - November). **C.** CHL-a Cluster dendrogram determined by macrozone. The height values represent the similarity values between each macrozone.



Supplementary Figure S3. Photosynthetically Active Radiation map (PAR) in $\text{E}/(\text{m}^2/\text{day})$ represented in a scale from blue (less incidence) to red (high incidence) and the corresponding distribution of *Leptogorgia* species (yellow) and *Muricea* species (blue). **A.** PAR radiation in the wet season (December - May). **B.** PAR radiation in the dry season (June - November). **C.** PAR Cluster dendrogram determined by macrozone. The height values represent the similarity values between each macrozone.

REFERENCES:

1. Valle, M.; Fuentes, M. Estudios de Caracterización del Mar Territorial Continental del Ecuador, Bases para lograr la zonificación marina. Estudio 4: Distribución y Variación de los valores de productividad primaria (fitoplacton) y secundaria (zooplacton), a dos profundidades, en el mar territorial y aguas interiores de la Plataforma Continental del Ecuador; Secretaria Técnica del Mar: SPINCAM Publications, Ecuador, 2014; p. 150.
2. Breedy, O.; Guzman, H.M. A revision of the genus *Muricea* Lamouroux, 1821 (Anthozoa, Octocorallia) in the eastern Pacific. Part II. *Zookeys* **2016**, 1-69, [10.3897/zookeys.581.7910].
3. Breedy, O.; Guzman, H.M. A revision of the genus *Muricea* Lamouroux, 1821 (Anthozoa, Octocorallia) in the eastern Pacific. Part I: *Eumuricea* Verrill, 1869 revisited. *Zookeys* **2015**, 1-32, [10.3897/zookeys.537.6025].
4. Breedy, O.; Guzman, H.M. A revision of the genus *Leptogorgia* Milne Edwards & Haime, 1857 (Coelenterata : Octocorallia : Gorgoniidae) in the eastern Pacific. *Zootaxa* **2007**, 1419, 1-90, [10.11646/zootaxa.1419.1.1].