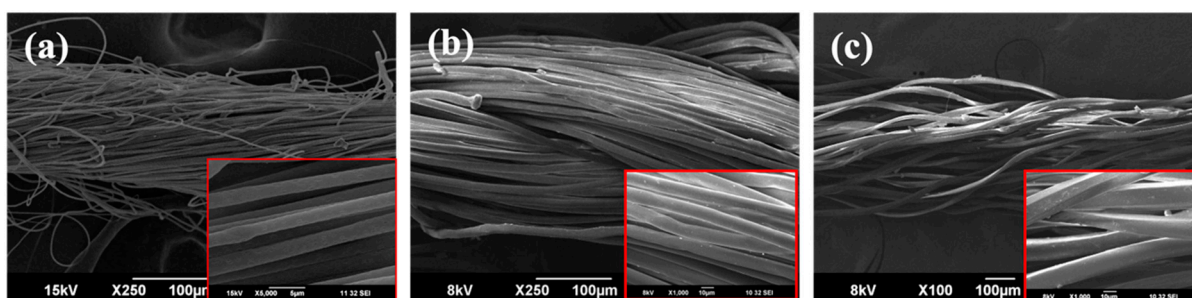
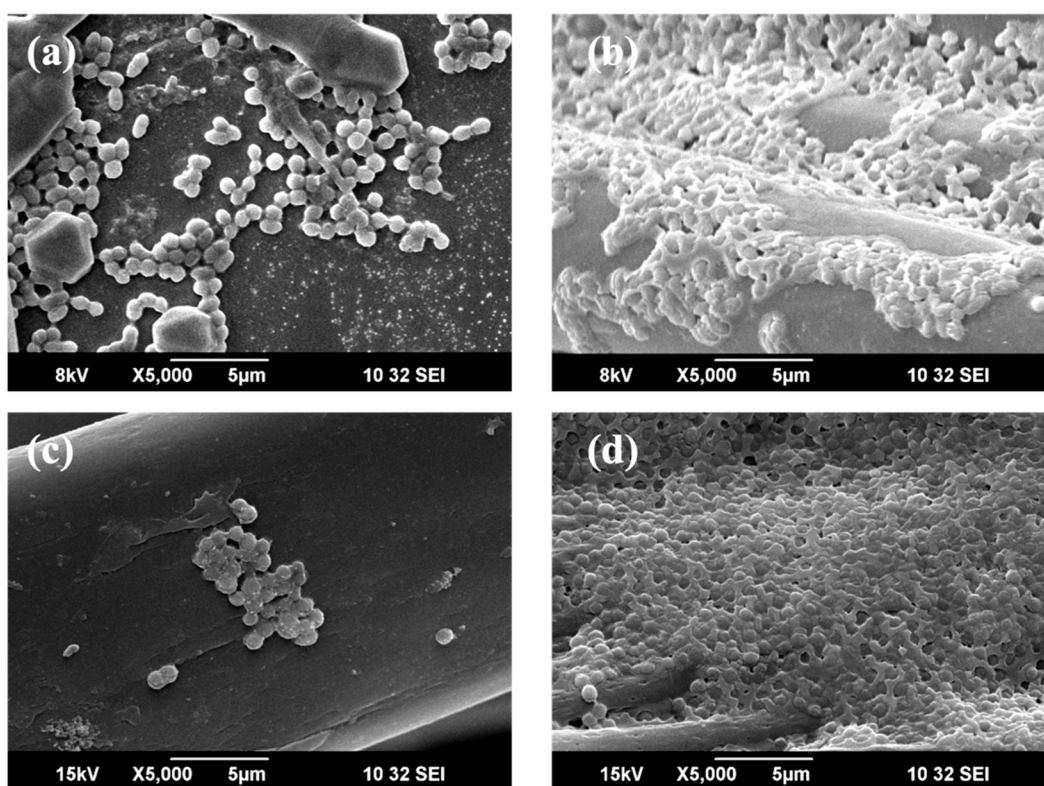


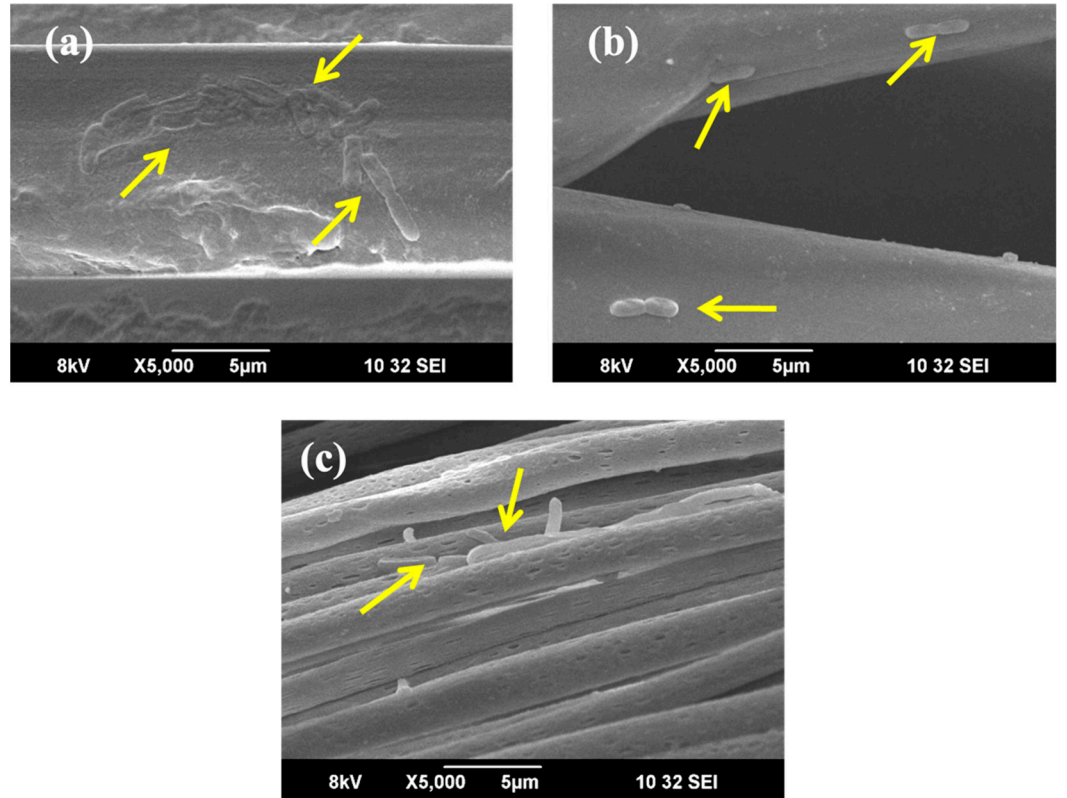
Supplementary Materials



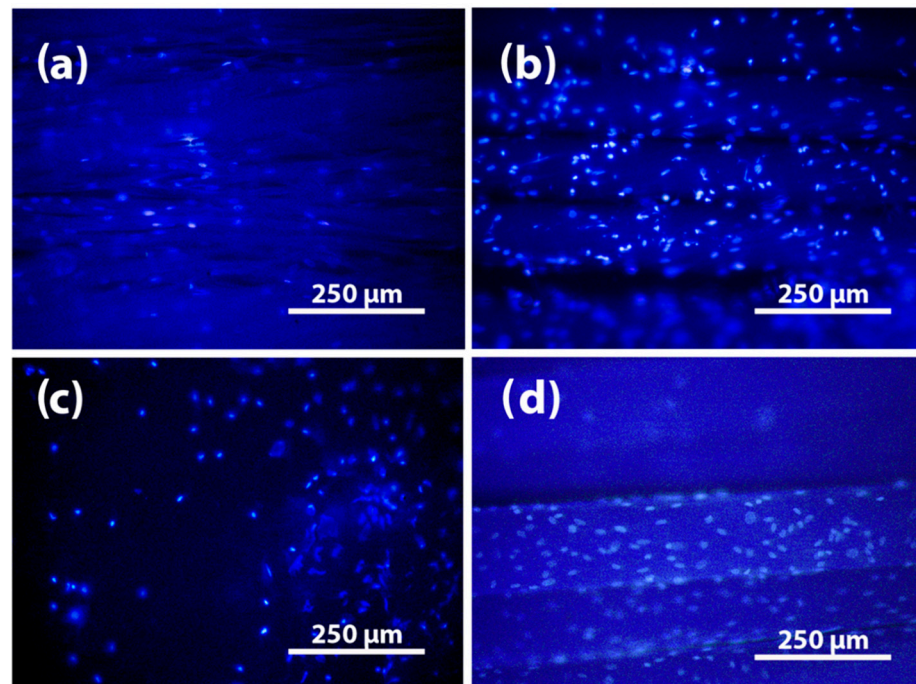
**Figure S1.** SEM micrographs of polymeric yarns (a) PLLA microyarn (b) PET fiber and (c) cotton thread.



**Figure S2.** SEM micrographs show *S.aureus* adhesion on (a) coverslip (b) cotton (c) PET and (d) PLLA microyarn.



**Figure S3.** SEM micrographs of *E. coli* adhesion on (a) cotton (b) PET and (c) PLLA micro yarn.



**Figure S4.** DAPI nuclear staining exhibits cell attachment on (a) PET fiber (b) PLLA microyarn (c) 2D non-woven PCL electrospun mat and (d) PCL monofilament.