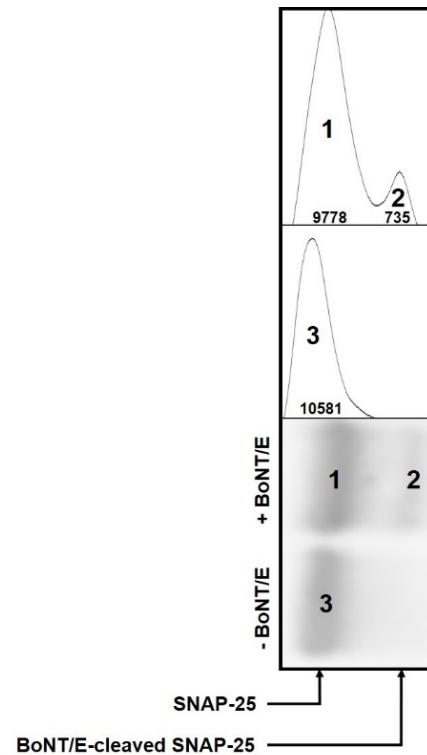


## Supplementary Materials:



**Figure S1.** Densitometry analysis of SNAP-25 western blot. Differentiated SiMa cells were exposed to 0 or 1000 LD<sub>50</sub>/ml of BoNT/E (- BoNT/E or + BoNT/E) and lysed 24 hours after intoxication. Lysates were subjected to SDS-PAGE and Western-blotted using anti-SNAP-25 polyclonal antibody (lower panel). Band signals were analyzed for densitometry (upper panel) using ImageJ (version 1.51) and values are depicted within each peak..