

Supplementary Material

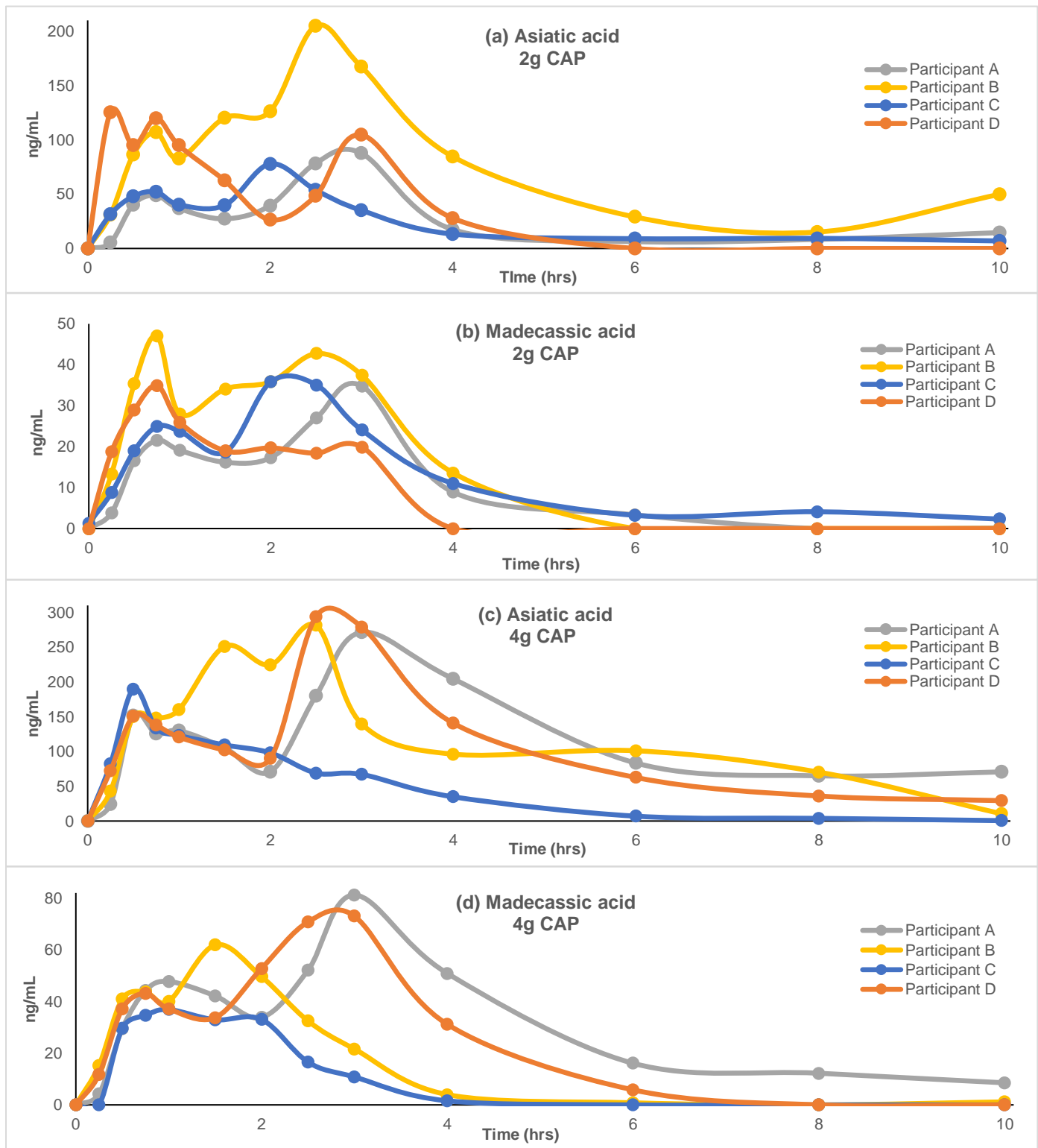


Figure S1. Individual plasma concentration-time profiles of triterpene aglycones derived from *Centella asiatica* water extract product (CAP) in cognitively impaired older adults on cholinesterase inhibitor therapy; (a) asiatic acid following single oral administration of 2 g CAP; (b) madecassic acid following single oral administration of 2 g CAP; (c) asiatic acid following single oral administration of 4 g CAP, (d) madecassic acid following single oral administration of 4 g CAP.