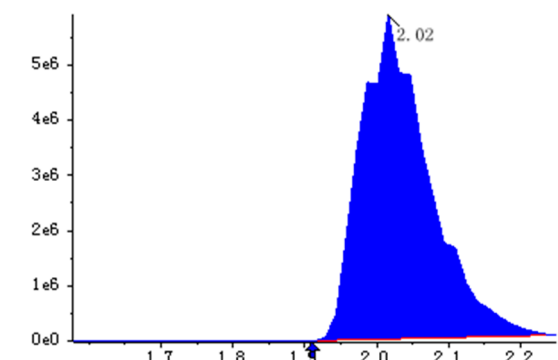
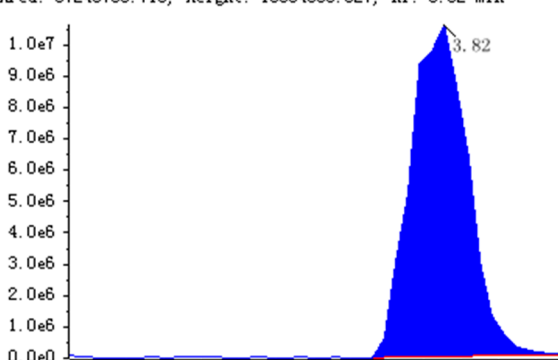
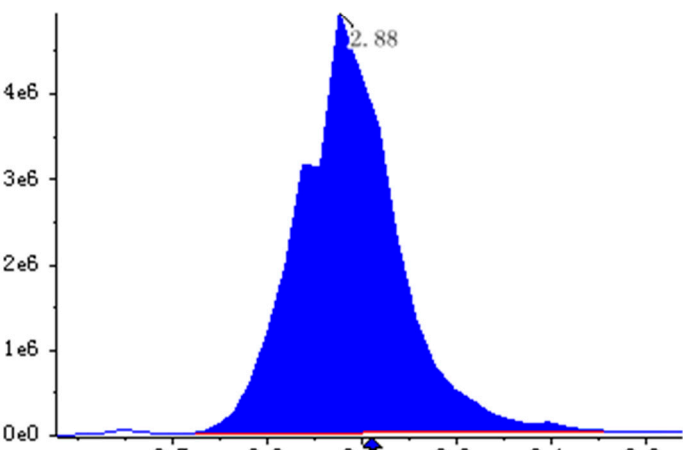
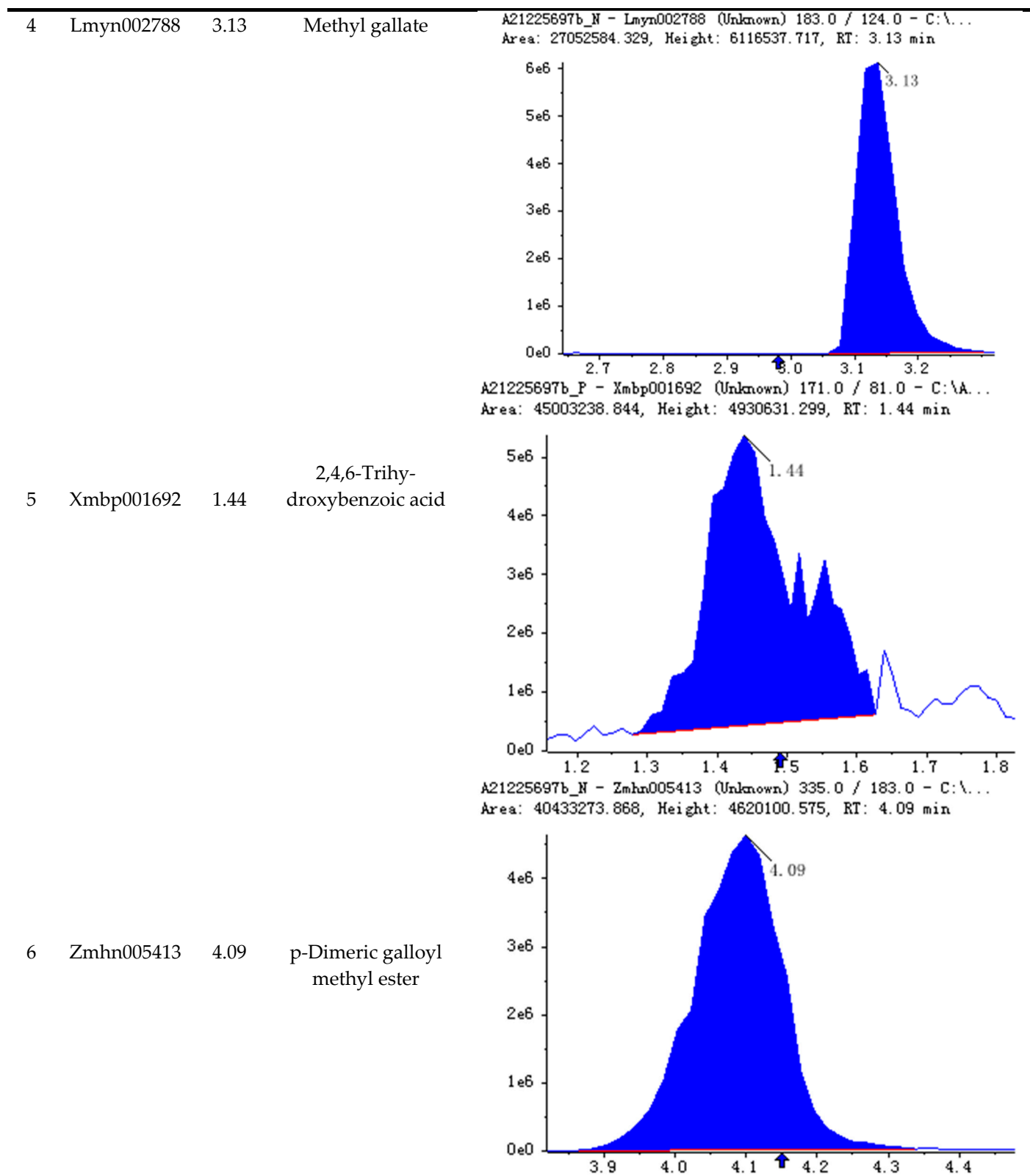
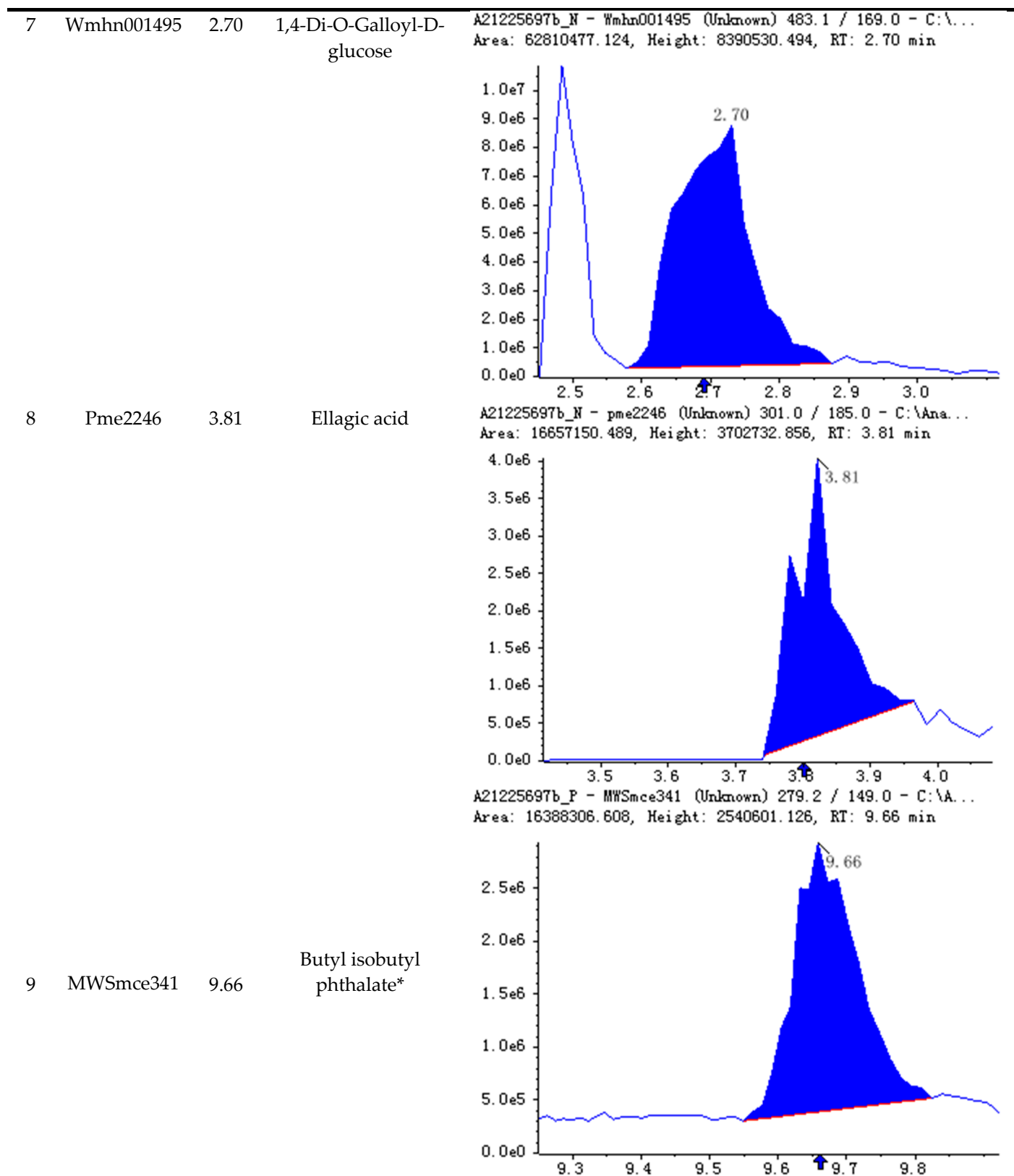
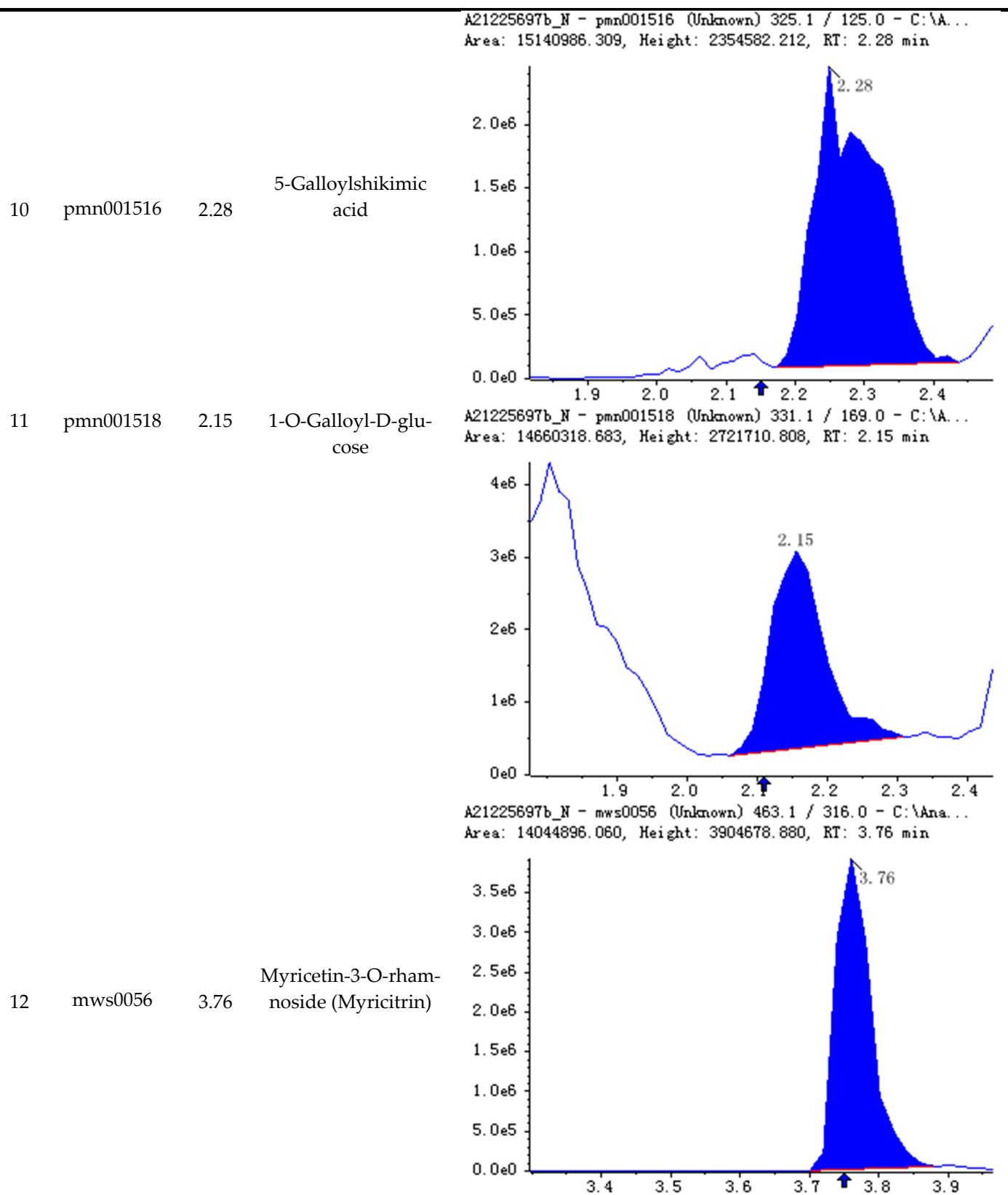


Table S3 Top 15 compounds identified by UPLC–MS/MS method operating in ESI mode in Fresh amla fruit

| No | Index      | R <sub>T</sub><br>(min) | Identified compound                        | Calibration diagrams                                                                                                                                                                                                |
|----|------------|-------------------------|--------------------------------------------|---------------------------------------------------------------------------------------------------------------------------------------------------------------------------------------------------------------------|
| 1  | lmyn001519 | 2.02                    | L-Malic acid-2-O-gal-<br>late              | <p>A21225697b_N - lmyn001519 (Unknown) 285.0 / 133.0 - C:\A...</p> <p>Area: 38804922.474, Height: 5871470.379, RT: 2.02 min</p>   |
| 2  | pmp001309  | 3.82                    | 6-Hy-<br>droxykaempferol-7-<br>O-glucoside | <p>A21225697b_P - pmp001309 (Unknown) 465.1 / 303.1 - C:\A...</p> <p>Area: 57246758.715, Height: 10564056.827, RT: 3.82 min</p>  |
| 3  | Pmn001513  | 2.88                    | Digallic Acid                              | <p>A21225697b_N - pmn001513 (Unknown) 321.0 / 125.0 - C:\A...</p> <p>Area: 34368442.734, Height: 4916439.393, RT: 2.88 min</p>  |

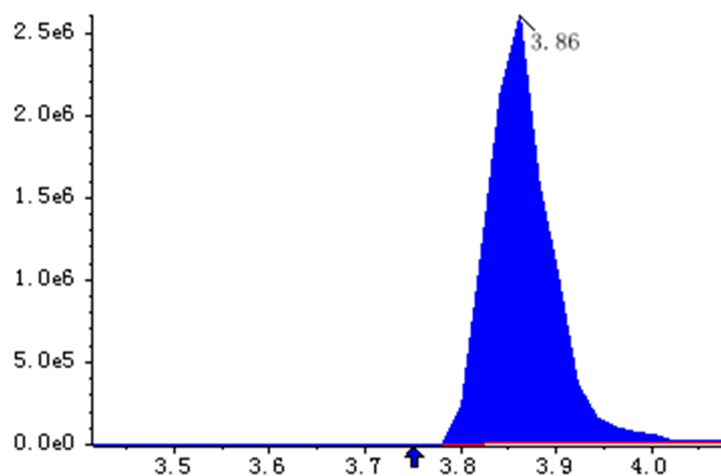






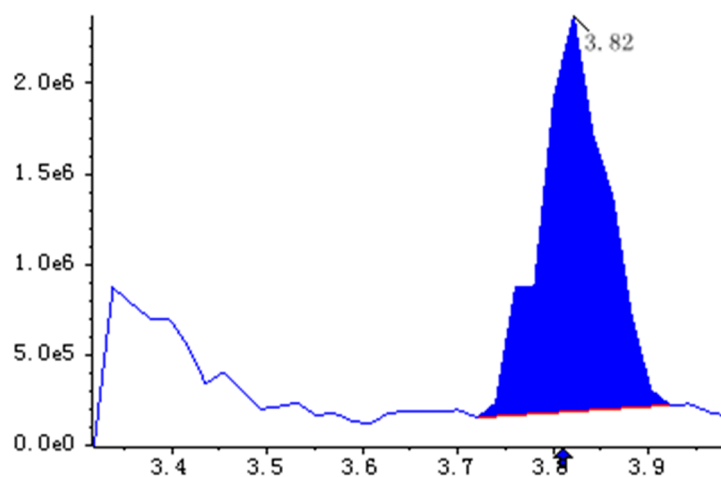
13 mws0355 3.86 Catechin gallate\*

A21225697b\_N - mws0355 (Unknown) 441.1 / 169.0 - C:\Ana...  
Area: 11479442.523, Height: 2598361.458, RT: 3.86 min



14 mws0061 3.82 Quercetin-3-O-galactoside (Hyperin)

A21225697b\_N - mws0061 (Unknown) 463.1 / 300.0 - C:\Ana...  
Area: 10630807.601, Height: 2182219.629, RT: 3.82 min



15 Lmyn002530 2.55 Carpinusin

A21225697b\_N - Lmyn002530 (Unknown) 989.1 / 337.0 - C:\...  
Area: 7252078.274, Height: 1304075.396, RT: 2.55 min

