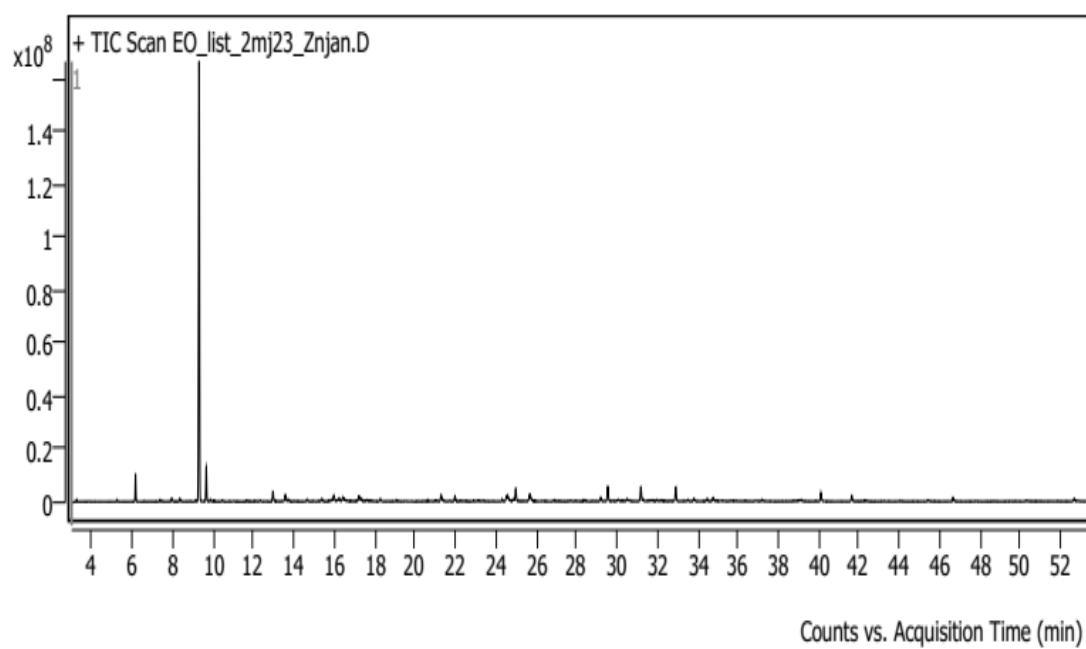
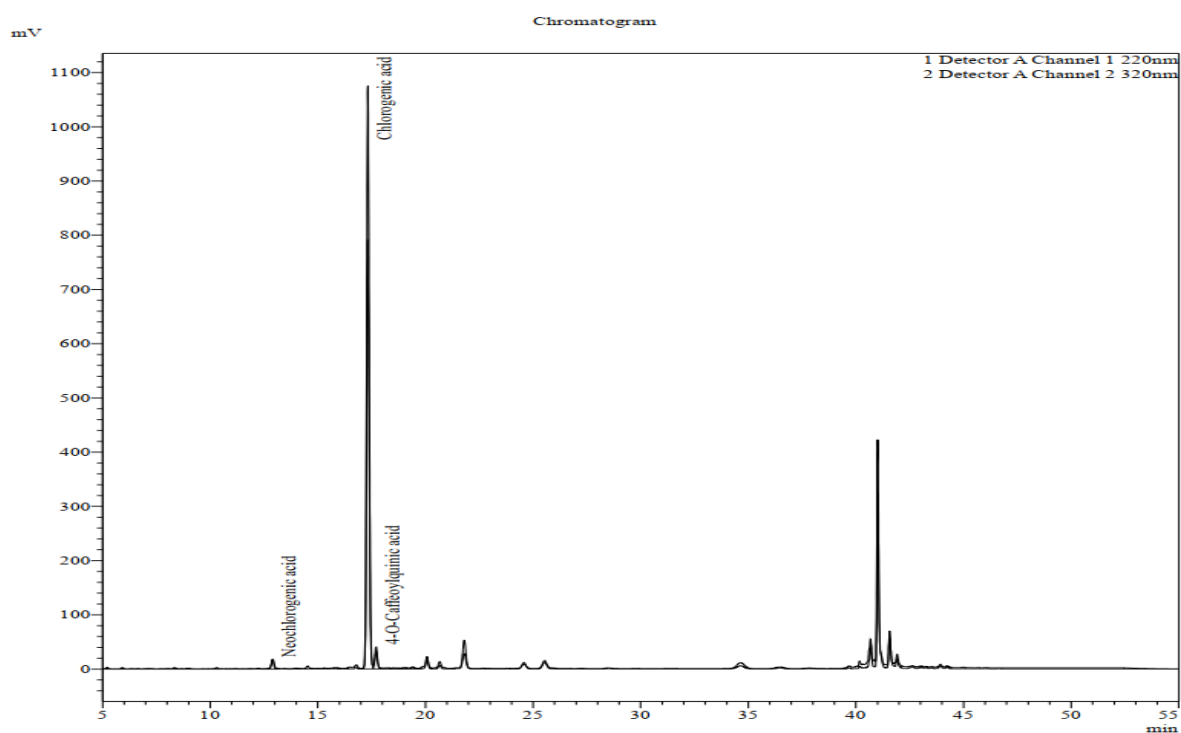


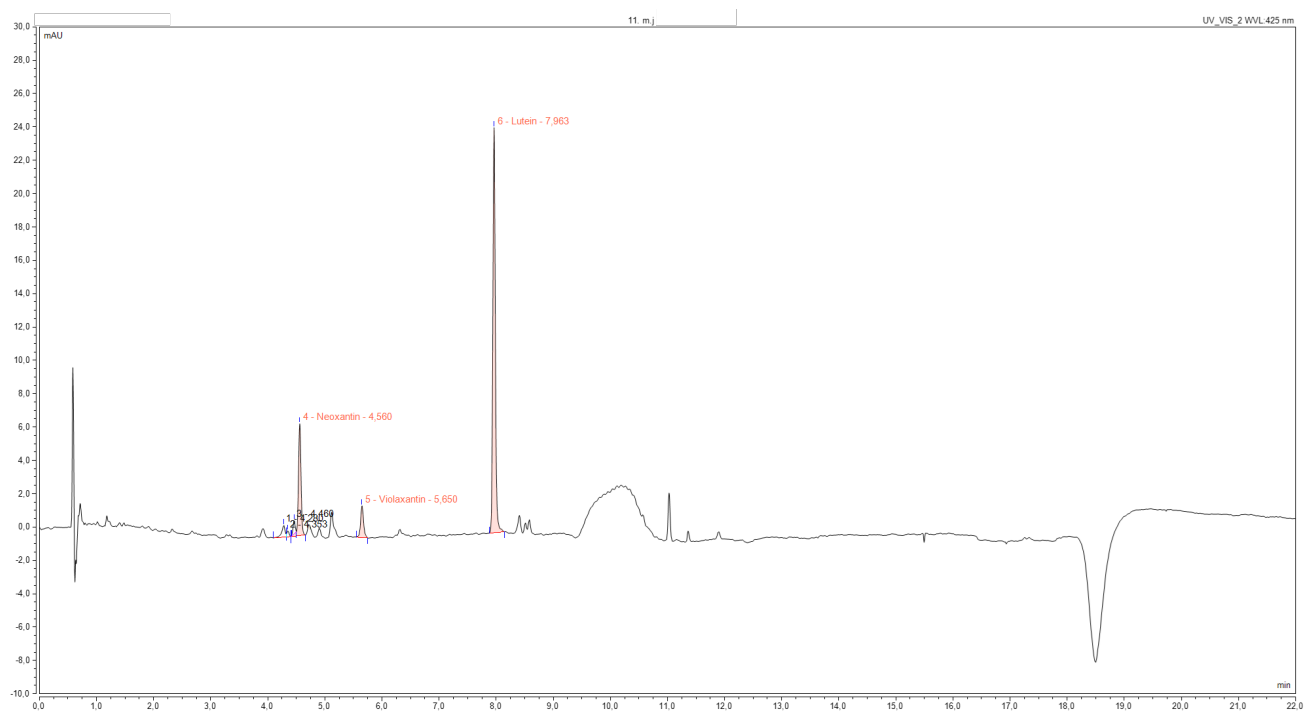
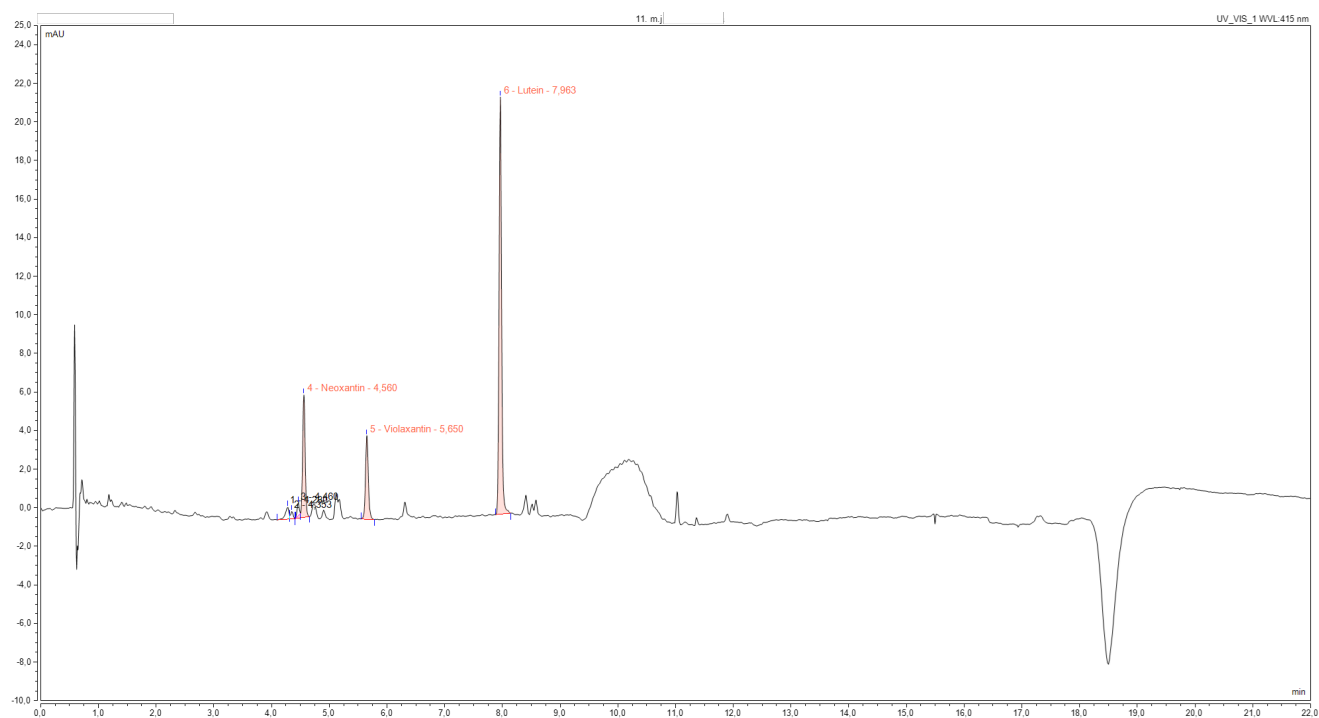
a)



b)



c)



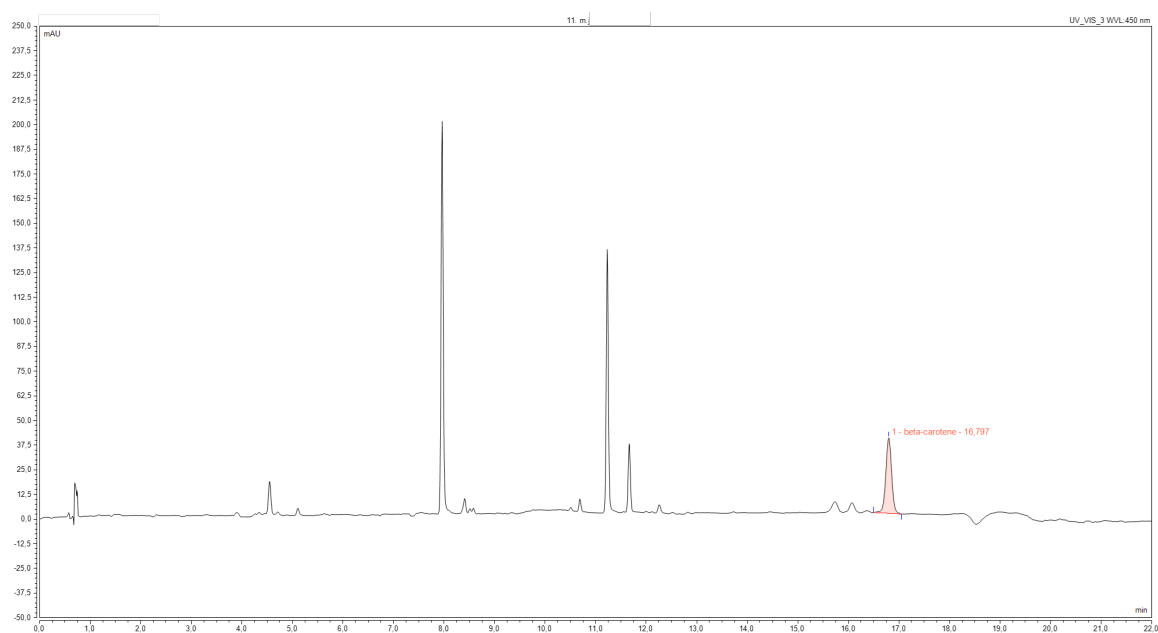
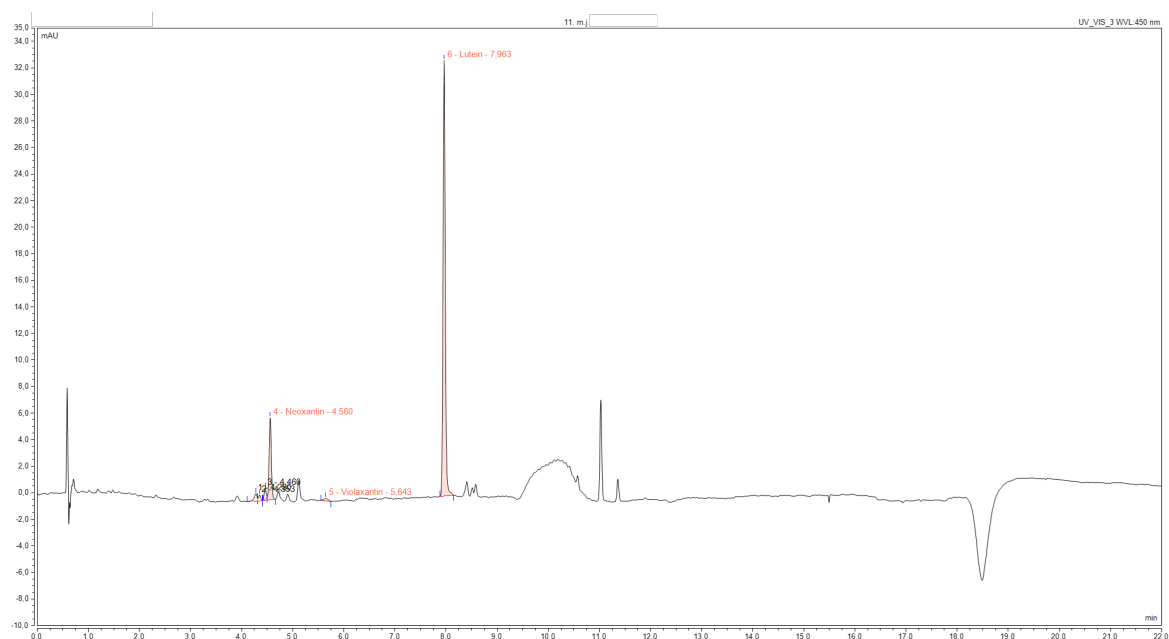


Figure S1. Representative chromatograms of sea fennel leaves a) GC-MS total ion chromatogram of essential oils, b) HPLC chromatogram of phenolics at 220 nm (upper) and 320 nm (lower) line, c) UHPLC chromatogram of carotenoids at lutein, neoxanthine and violaxanthine at 415, 425 and 450 nm and β -carotene at 450 nm