

Supplementary Materials

Quantification of Intra-Muscular Adipose Infiltration in Calf/Thigh MRI Using Fully and Weakly Supervised Semantic Segmentation

Rula Amer ¹, Jannette Nassar ¹, Amira Trabelsi ², David Bendahan ², Hayit Greenspan ^{1,*} and Noam Ben-Eliezer ^{1,3,4,*}

¹ Department of Biomedical Engineering, Tel Aviv University, Tel Aviv 6139001, Israel; rolaamer@mail.tau.ac.il (R.A.); jannette2210@gmail.com (J.N.)

² Center for Magnetic Resonance in Biology and Medicine, Aix Marseille University, 13007 Marseille, France; amira.trabelsi.tn@gmail.com (A.T.); david.bendahan@univ-amu.fr (D.B.)

³ Sagol School of Neuroscience, Tel-Aviv University, Tel Aviv, Israel

⁴ Center for Advanced Imaging Innovation and Research (CAI2R), New York University School of Medicine, New York, NY 10016, USA

* Correspondence: noambe@tauex.tau.ac.il (N.B.E.); Tel.: +972-3-6409388

Citation: Amer, R.; Nassar, J.; Trabelsi, A.; Bendahan, D.; Greenspan, H.; Ben-Eliezer, N. Quantification of Intra-Muscular Adipose Infiltration in Calf/Thigh MRI Using Fully and Weakly Supervised Semantic Segmentation. *Bioengineering* **2022**, *9*, x. <https://doi.org/10.3390/xxxxx>

Academic Editor: Zhen Cheng

Received: 25 May 2022

Accepted: 8 July 2022

Published: date

Publisher's Note: MDPI stays neutral with regard to jurisdictional claims in published maps and institutional affiliations.



Copyright: © 2022 by the authors. Submitted for possible open access publication under the terms and conditions of the Creative Commons Attribution (CC BY) license (<https://creativecommons.org/licenses/by/4.0/>).

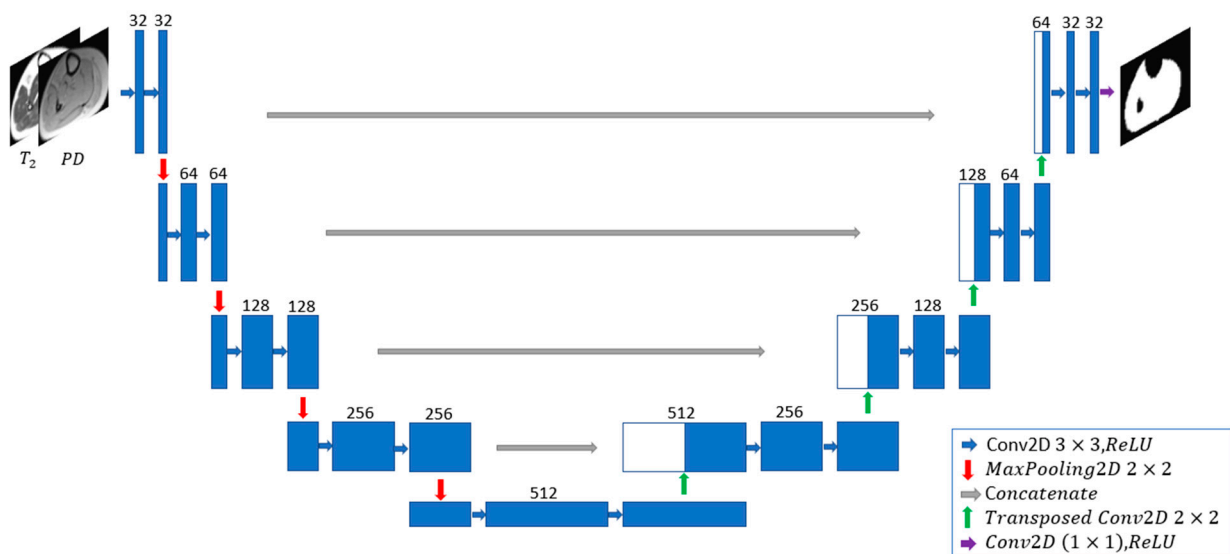


Figure S1. The architecture of U-net used for muscle-region segmentation.

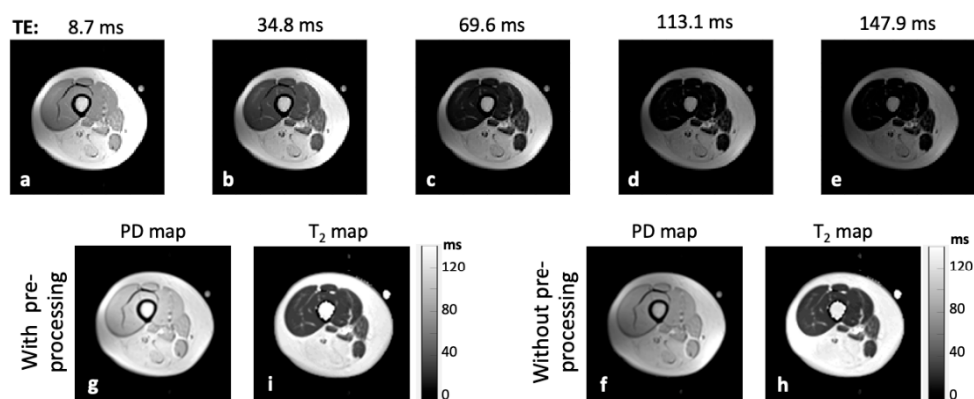


Figure S2. Data used for training the deep neural network. (a-e) Five representative raw T₂-weighted images from 1st, 4th, 8th, 13th, and 17th echo times (TEs). (f-g) Quantitative proton density maps [A.U.]. (h-i) Quantitative T₂ maps [ms]. Seven different combinations of this data were used as inputs to train the network. (i) T₂ & PD maps w/o pre-processing; (ii) T₂ & PD maps w/ pre-processing; (iii / iv) Unprocessed / processed T₂ maps; (v / vi) Unprocessed / processed PD maps; (vii) Full set of raw T₂-weighted images (from all TEs).