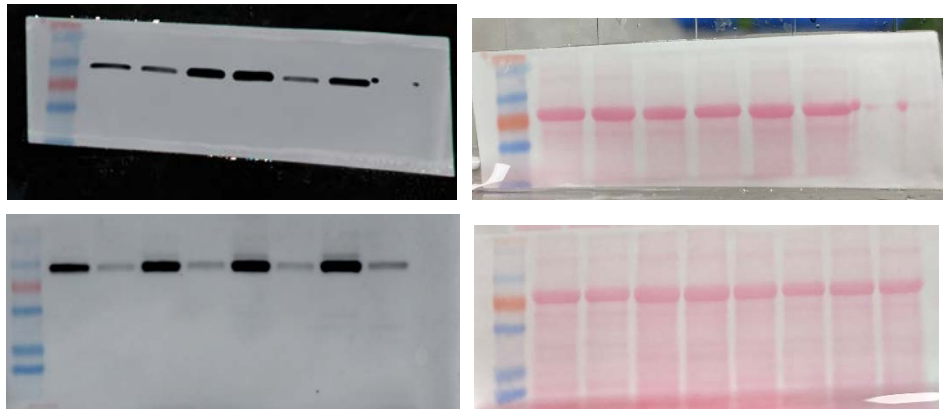
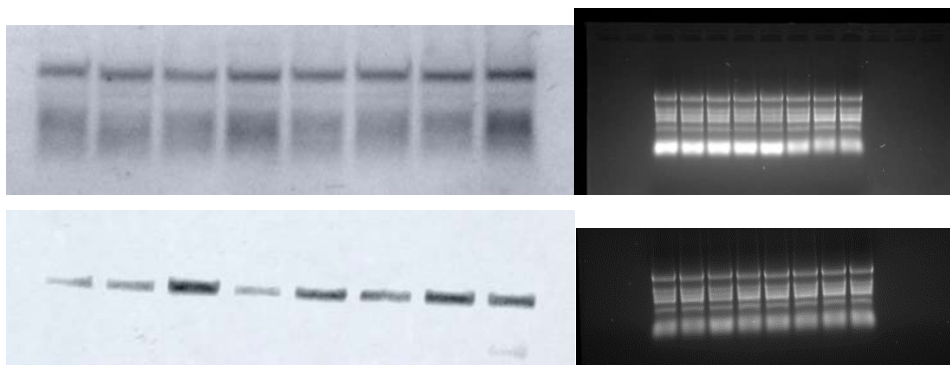


Supplementary Figure S2



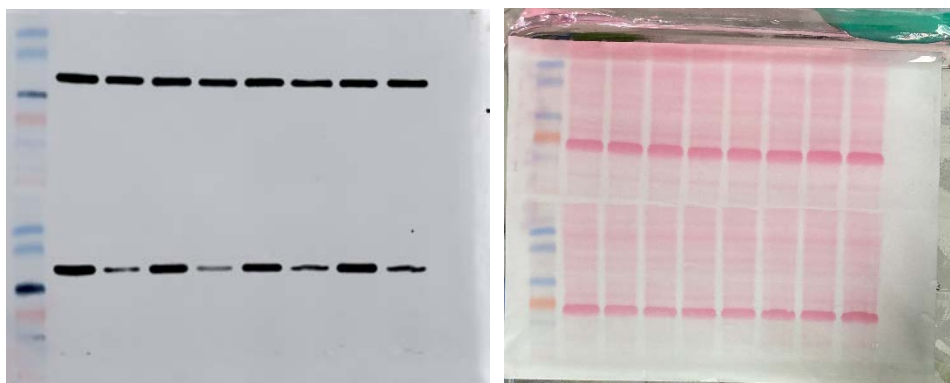
**Fig. S2** Western blot analysis of GFP-fused target proteins from coinfiltrated *N. benthamiana* leaves. Loading control were used to show that equal amounts of total protein were loaded. Figure 2B inside the main text is generated from the attached supplementary S2 figure.

Supplementary Figure S3



**Fig. S3** Northern blot analysis of GFP-fused target mRNA from coinfiltrated *N. benthamiana* leaves. rRNA were used to show that equal amounts of total RNA were loaded. Figure 2C inside the main text is generated from the attached supplementary S3 figure.

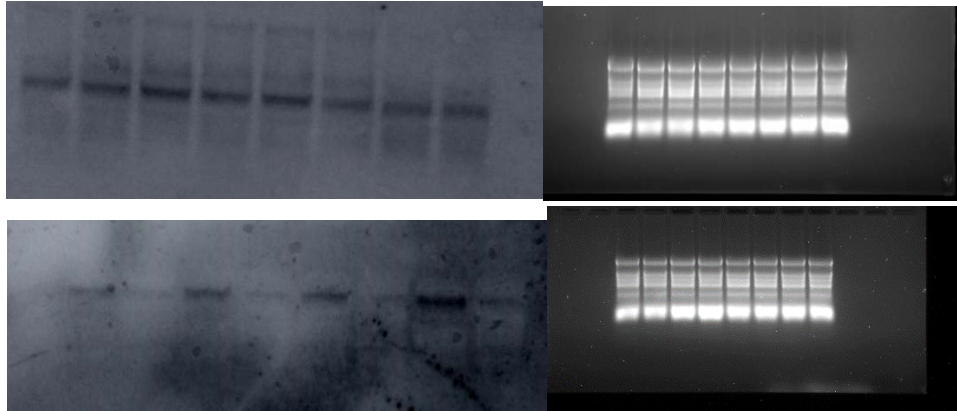
Supplementary Figure S4



**Fig. S4** Western blot analysis of GFP-unfused target proteins from coinfiltrated *N. benthamiana* leaves. Loading control were used to show that equal amounts of total protein were loaded.

Figure 2D inside the main text is generated from the attached supplementary S4 figure.

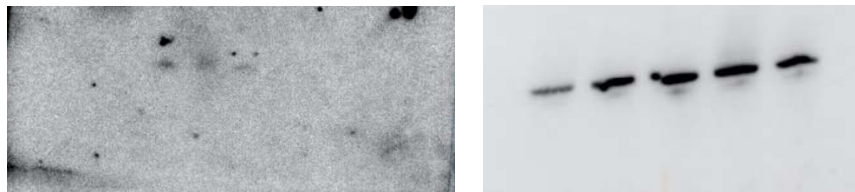
#### Supplementary Figure S5



**Fig. S5** Northern blot analysis of GFP-unfused target mRNA from coinfiltrated *N. benthamiana* leaves. rRNA were used to show that equal amounts of total RNA were loaded.

Figure 2E inside the main text is generated from the attached supplementary S5 figure.

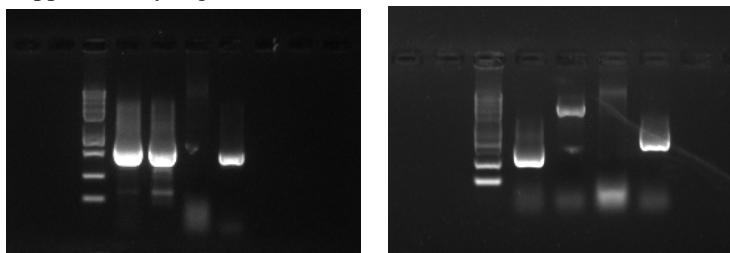
#### Supplementary Figure S6



**Fig. S6** Northern blot analysis of specific amiRNAs from transgenic plants amiR MP-18, amiR MP-19 and amiR MP-24. WT indicates wild-type plants.

Figure 3C inside the main text is generated from the attached supplementary S6 figure.

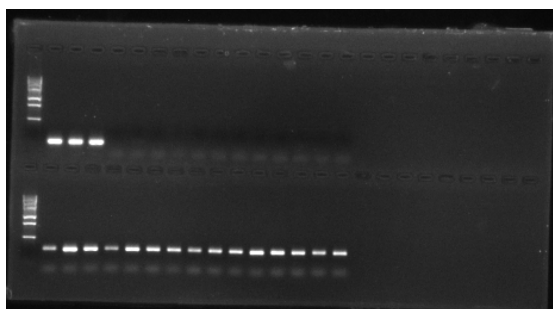
#### Supplementary Figure S7



**Fig. S7** Results of PCR reactions to identify the homozygous lines.

Figure 3E inside the main text is generated from the attached supplementary S7 figure.

Supplementary Figure S8



**Fig. S8** RT-PCR detection of the accumulation of CP in RSV-infected plants with different symptoms. Figure 4D inside the main text is generated from the attached Supplementary S8 figure.