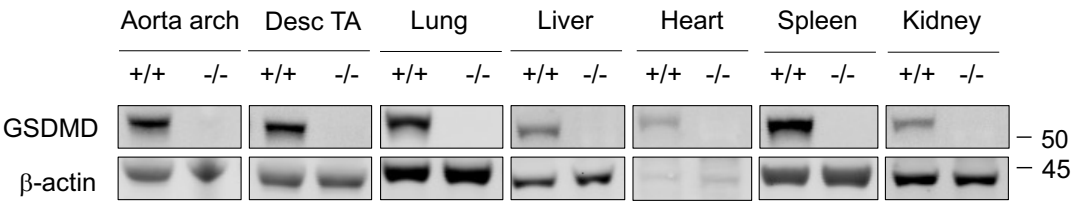
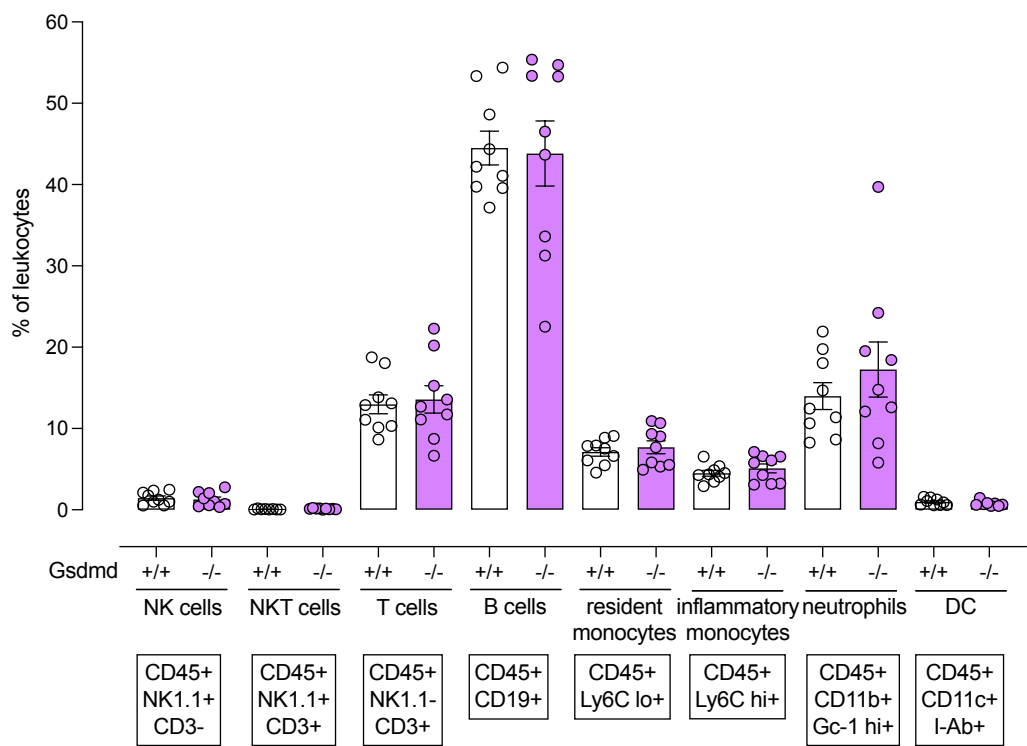


Figure S1



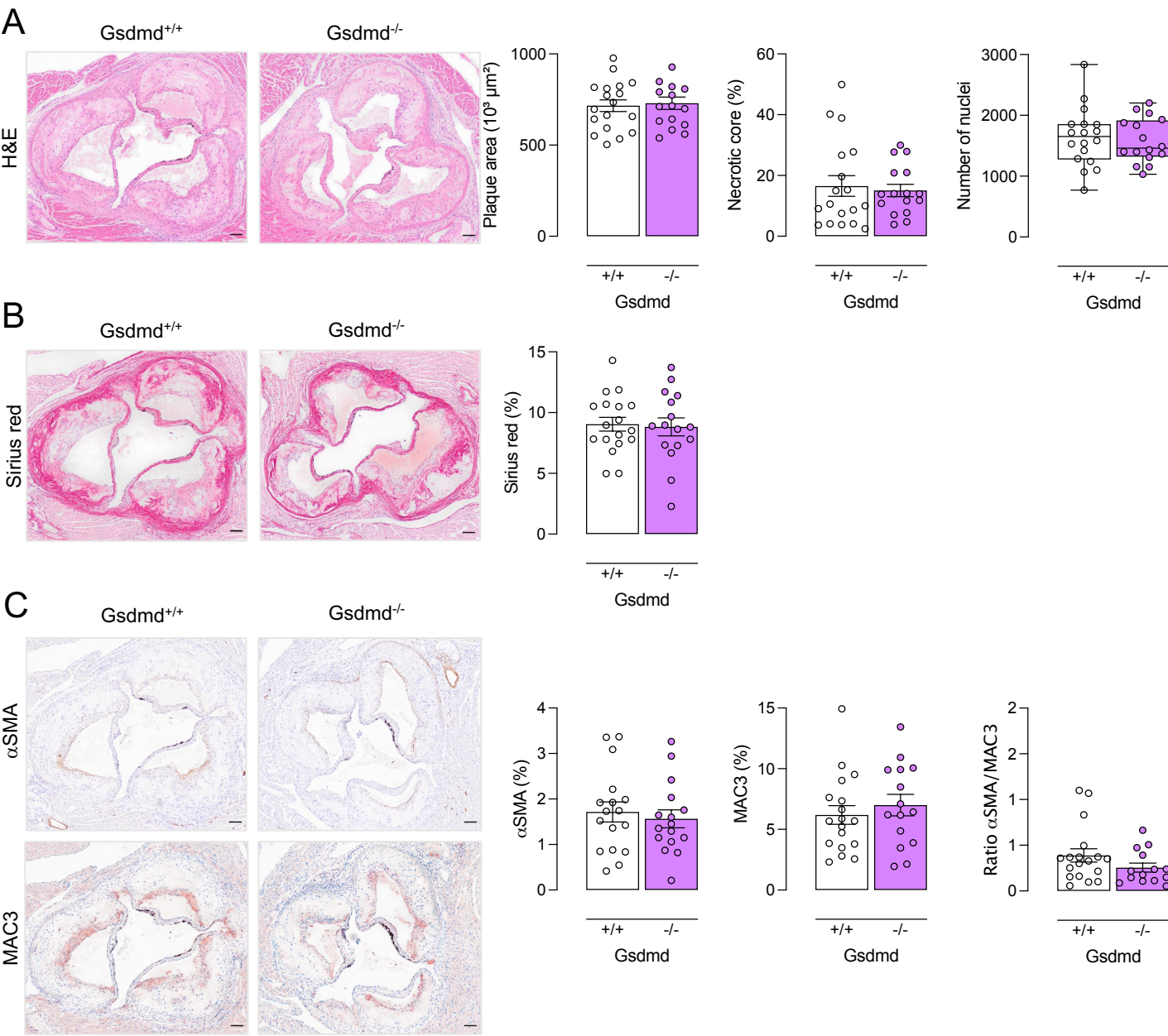
Validation of *Gsdmd* knock-out in tissue samples from *ApoE*^{-/-} *Gsdmd*^{-/-} mice. *ApoE*^{-/-} *Gsdmd*^{-/-} and *ApoE*^{-/-} *Gsdmd*^{+/+} mice were fed a WD for 16 weeks. Lysates of the aorta arch, descending (desc) thoracic aorta (TA), lungs, liver, heart, spleen and kidney were prepared for western blot analyses of GSDMD expression. β-actin was used as a loading control. Representative blots are shown (n=10-18 mice per group).

Figure S2



Analysis of blood leukocyte subsets. *ApoE*^{-/-} *Gsdmd*^{-/-} and *ApoE*^{-/-} *Gsdmd*^{+/+} mice were fed a WD for 16 weeks. Blood samples were collected and leukocyte subsets were analyzed on a BD accuri C6 flow cytometer (n=9 mice per group).

Figure S3



Plaque analysis in the aortic root from *ApoE*^{-/-} *Gsdmd*^{-/-} and *ApoE*^{-/-} *Gsdmd*^{+/+} mice. *ApoE*^{-/-} *Gsdmd*^{-/-} and *ApoE*^{-/-} *Gsdmd*^{+/+} mice were fed a WD for 16 weeks. Sections of the aortic root were stained with (A) hematoxylin/eosin to quantify plaque size, necrotic cores and cell infiltration, (B) Sirius red to measure total collagen content, (C) anti-MAC3 and anti-α-smooth muscle actin (αSMA) to determine macrophage and smooth muscle cell content, respectively, and to calculate the ratio of αSMA/MAC3 immunoreactivity. (independent samples t-test, boxplot: Mann-Whitney test, n=14-18 mice per group). Scale bar = 100 μm. Representative images are shown.