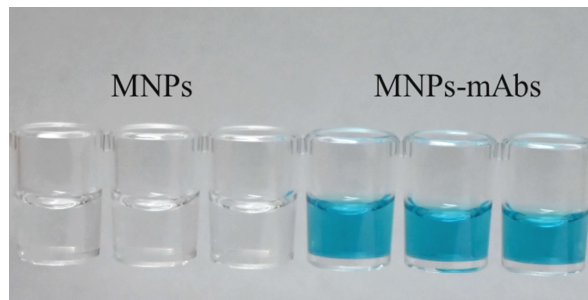
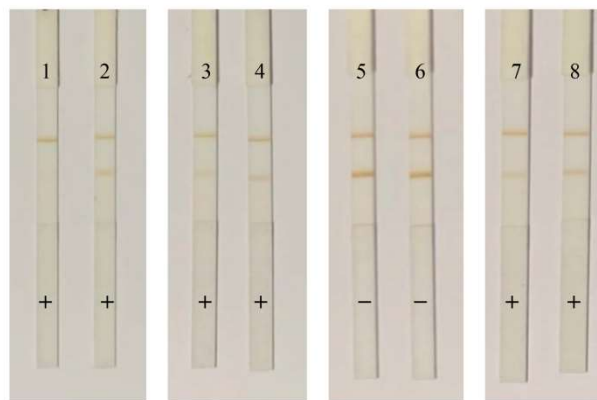


## Supplementary materials:



**Figure S1: MNPs-mAbs confirmed by ELISA**



**Figure S2: Colorimetric results of real samples detected by MICA.**

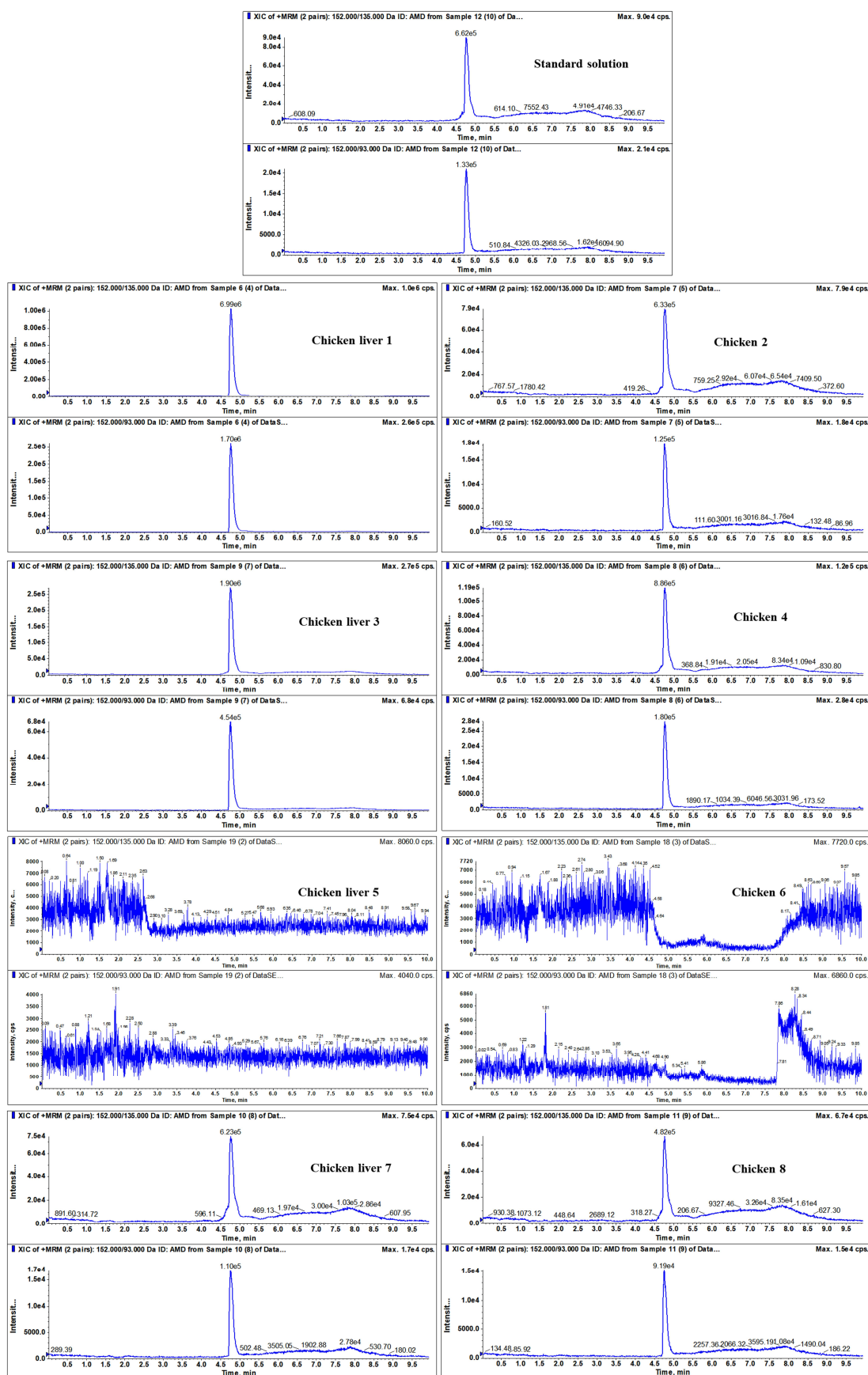


Figure S3: Mass spectrum of AMD in standard solution(5.0  $\mu$ g/L) and actual samples

**Table S1: Methods of sample preparation**

Method	Sample	Weight ( $\pm 0.05$ g)	Extractant	Redissolve solvents
1	chicken	2	5 mL PBS (pH7.4)	–
2	chicken	2	5 mL Ethyl acetate	300 $\mu$ L PBST+ 1 mL N-hexane
3	chicken	2	5 mL Acetonitrile+ 0.5 g NaCl	300 $\mu$ L PBST+ 1 mL N-hexane
4	chicken	2	5 mL Acetonitrile-Ethyl acetate(1:1)+0.5 g NaCl	300 $\mu$ L PBST+ 1 mL N-hexane
5	egg	2	5 mL Acetonitrile+ 0.5 g NaCl	400 $\mu$ L PBST+ 1 mL N-hexane
6	egg	2	5 mL Acetonitrile with 1% acetic acid +0.5 g NaCl	400 $\mu$ L PBST+ 1 mL N-hexane
7	egg	2	5 mL Acetonitrile with 1% acetic acid +1.0 g NaCl	400 $\mu$ L PBST+ 1 mL N-hexane
8	egg	2	5 mL 1% Hydrochloric acid- acetonitrile+0.5 g NaCl	400 $\mu$ L PBST+ 1 mL N-hexane
9	egg	2	5 mL 1% Hydrochloric acid- acetonitrile+1.0 g NaCl	400 $\mu$ L PBST+ 1 mL N-hexane

**Table S2: Difference between positive and negative values of pretreatment methods**

Method	Sample	Difference	Method	Sample	Difference
1	chicken	–	5	egg	++
2	chicken	–	6	egg	–
3	chicken	++++	7	egg	–
4	chicken	++	8	egg	+++
			9	egg	++++

–: no difference; +: the larger the number, the larger difference.

**Table S3: Comparison between MICA and LC-MS/MS**

Sample		MICA	LC-MS / MS	
chicken liver	1	+	+	
chicken	2	+	+	
chicken liver	3	+	+	
chicken	4	+	+	+: positive
chicken liver	5	–	–	–: negative
chicken	6	–	–	
chicken liver	7	+	+	
chicken	8	+	+	