

Supplementary Materials:

Type of the Paper (Article)

Head-to-head comparison of neck ^{18}F -FDG PET/MR and PET/CT in the diagnosis of differentiated thyroid carcinoma patients after comprehensive treatment

Yangmeihui Song^{1,2#}, Fang Liu^{1,2#}, Weiwei Ruan^{1,2}, Fan Hu^{1,2}, Muhsin H. Younis³, Zairong Gao^{1,2}, Jie Ming⁴, Tao Huang⁴, Weibo Cai^{3,5}, Xiaoli Lan^{1,2,*}

¹ Department of Nuclear Medicine, Union Hospital, Tongji Medical College, Huazhong University of Science and Technology

² Hubei Province Key Laboratory of Molecular Imaging

³ Departments of Radiology and Medical Physics, University of Wisconsin-Madison, Madison, WI, USA

⁴ Department of Breast and Thyroid Surgery, Union Hospital, Tongji Medical College, Huazhong University of Science and Technology

⁵ University of Wisconsin Carbone Cancer Center, Madison, WI, USA

Yangmeihui Song and Fang Liu contributed equally to this work.

* Correspondence: xiaoli_lan@hust.edu.cn

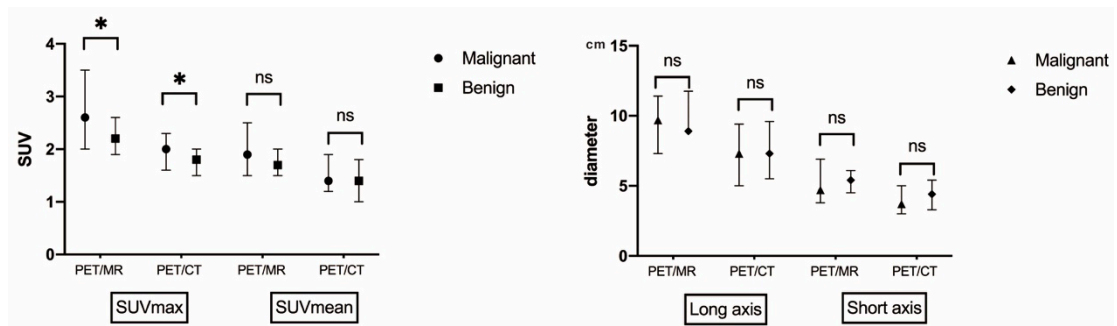


Figure S1. SUVs, diameters of malignant and benign lymph nodes detected by both PET/MR and PET/CT;

ns Represents no significance; * Represents the p-value <0.05

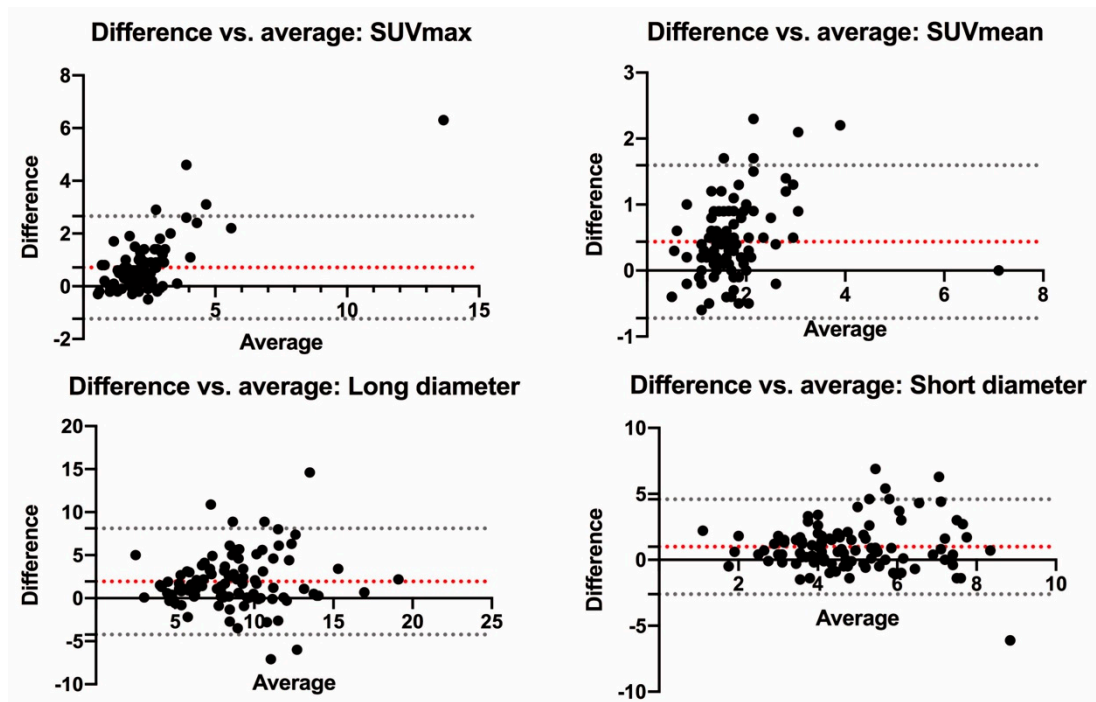


Figure S2. The Bland-altman analysis of SUVmax, SUVmean and diameter measurements provided in two modalities

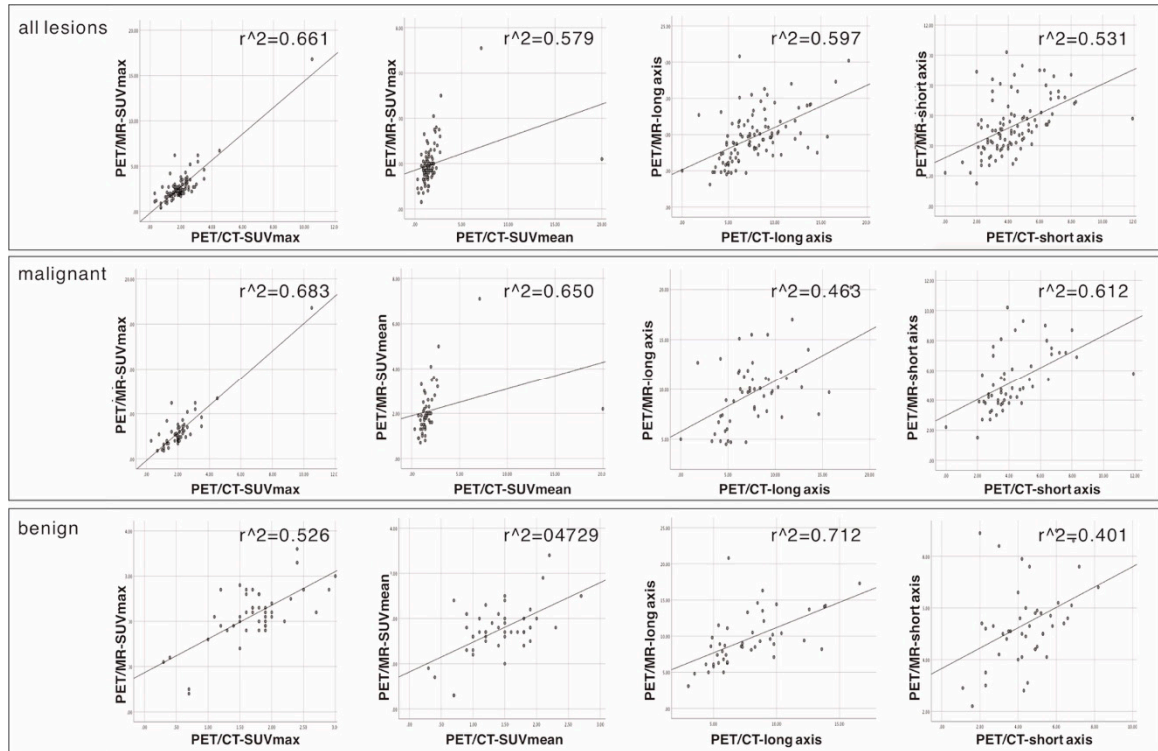


Figure S3. Correlation of SUVs and lymph node diameters measured on PET/MR and PET/CT