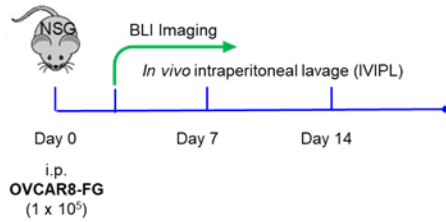
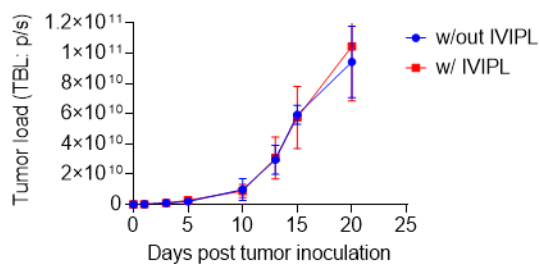
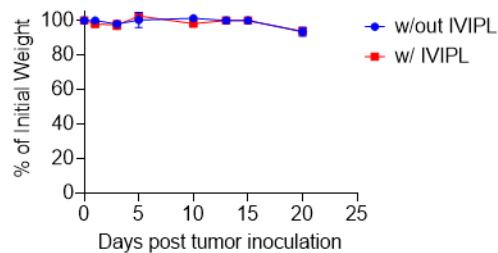
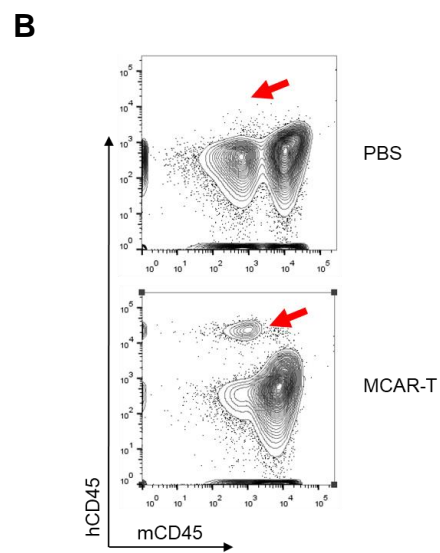
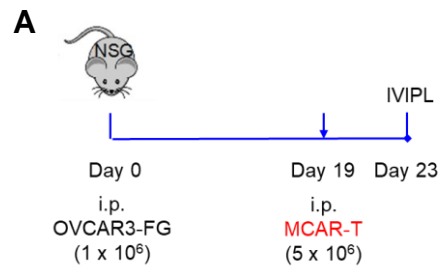


**Figure S1.** Schematic representation of mesothelin-targeting CAR retroviral vector.

**A****B****C**

**Figure S2.** IVIPL does not affect OVCAR8-FG tumor growth nor mice weights. **(A)** Experimental design to monitor IVIPL affect on tumor growth and mice health in an ovarian cancer model (n=2 per group). **(B)** Tumor growth curve. **(C)** Weight measurements.



**Figure S3.** IVIPL identified MCAR-T cells in an OVCAR3FG model. **(A)** Experimental design to identify MCAR-T cells using IVIPL in an OVCAR3FG ovarian cancer model. **(B)** FACS plot of IVIPL fluid showing MCAR-T cells (hCD45+) in the peritoneal cavity.