

Figure S1. Kaplan-Meier survival curves of patients with small tumors. (A) Recurrence-free survival curve estimated by Kaplan-Meier methods. (B) Overall survival curve estimated by Kaplan-Meier methods. (C-D) Kaplan-Meier curves depicting recurrence-free survival and overall survival for patients with tumors >2 cm or ≤ 2 cm.

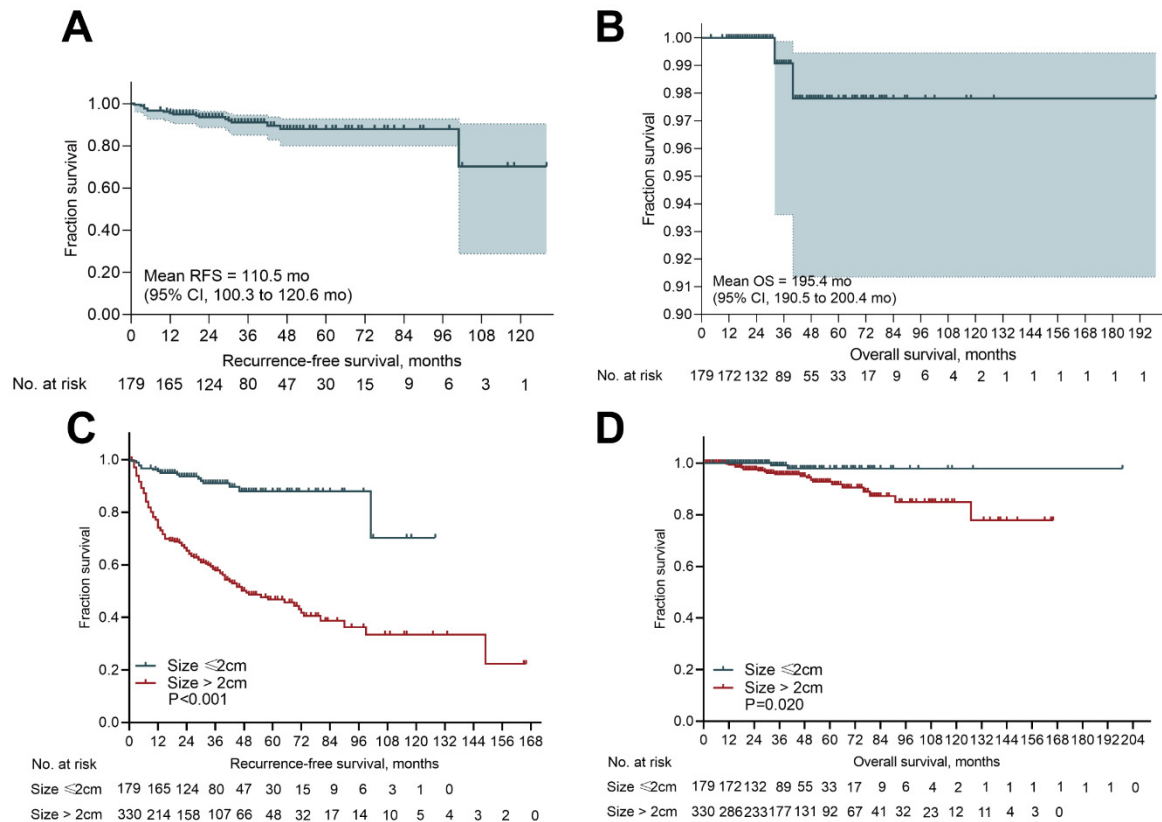


Table S1. Demographics and clinical characteristics of the non-metastatic and resected NF-PanNETs cohort during three periods

Characteristics	2006-2016 (n=171)	2017-2018 (n=140)	2019-2020 (n=153)	<i>P</i> -value
	No. (%)	No. (%)	No. (%)	
Gender				0.863
Male	72 (42.1)	61 (43.6)	69 (45.1)	
Female	99 (57.9)	79 (56.4)	84 (54.9)	
Age, years, median	54	54	53	0.732
Tumor size, cm, Mean (SD)	4.0 (3.0)	3.3 (2.5)	3.0 (2.3)	0.006
Location				0.332
Head	41 (24.0)	49 (35.0)	40 (26.1)	
Neck	25 (14.6)	17 (12.1)	20 (13.1)	
Body	24 (14.0)	22 (15.7)	22 (14.4)	
Tail	34 (19.9)	15 (10.7)	19 (12.4)	
Body-Tail	39 (22.8)	32 (22.9)	43 (28.1)	
Multifocal	8 (4.7)	5 (3.6)	9 (5.9)	
Lymph node positive				0.374
Yes	35 (20.5)	33 (23.6)	26 (17.0)	
No	136 (79.5)	107 (76.4)	127 (83.0)	
Perineural invasion	n=164	n=137	n=152	0.123
Yes	28 (17.1)	33 (24.1)	23 (15.1)	
No	136 (82.9)	104 (75.9)	129 (84.9)	
Microvascular invasion	n=164	n=137	n=152	0.037
Yes	30 (18.3)	42 (30.7)	41 (27.0)	
No	134 (81.7)	95 (69.3)	111 (73.0)	
Metastases				0.506
Yes	29 (17.0)	22 (15.7)	19 (12.4)	
No	142 (83.0)	118 (84.3)	134 (87.6)	
Surgical approach				<0.001
Open	165 (96.5)	122 (87.1)	82 (53.6)	
Minimally	6 (3.5)	18 (12.9)	71 (46.4)	
Surgical procedure				0.258
PD	43 (25.1)	52 (37.1)	46 (30.1)	
DP	102 (59.6)	72 (51.4)	94 (61.4)	
TP	6 (3.5)	2 (1.4)	2 (1.3)	
EN	15 (8.8)	11 (7.9)	10 (6.5)	
CP	5 (2.9)	3 (2.1)	1 (0.7)	

Margin status				0.090
R0	140 (81.9)	113 (80.7)	134 (87.6)	
R1	2 (1.2)	5 (3.6)	0 (0.0)	
R2	29 (17.0)	22 (15.7)	19 (12.4)	
AJCC 8th TNM stage				0.485
I	43 (25.1)	40 (28.6)	52 (34.0)	
II	80 (46.8)	57 (40.7)	66 (43.1)	
III	19 (11.1)	21 (15.0)	16 (10.5)	
IV	29 (17.0)	22 (15.7)	19 (12.4)	
WHO classification				0.290
G1	84 (49.1)	65 (46.4)	61 (39.9)	
G2	82 (48.0)	67 (47.9)	87 (56.9)	
G3	5 (2.9)	8 (5.7)	5 (3.3)	

Note: SD: standard deviation; PD: pancreaticoduodenectomy; DP: distal pancreatectomy; TP: total pancreatectomy; EN: enucleation; CP: central pancreatectomy; AJCC: American Joint Committee on Cancer; WHO: World Health Organization.
