

Supplementary Materials

Molecular basis of XRN2-deficient cancer cell sensitivity to PARP inhibition

Talysa Viera, Quinn Abfalterer, Alyssa Neal, Richard Trujillo, Praveen L. Patidar*

Department of Chemistry, New Mexico Institute of Mining and Technology, Socorro,
NM, 87801, USA

*To whom correspondence should be addressed: Praveen L. Patidar, Department of Chemistry, New Mexico Institute of Mining and Technology, 801 Leroy Pl., Socorro, NM, 87801, USA; Email: Praveen.Patidar@nmt.edu; Phone: +1 575 835 5168; Fax: +1 575 835 5364

Figure S1 Figure 1C Supplementary

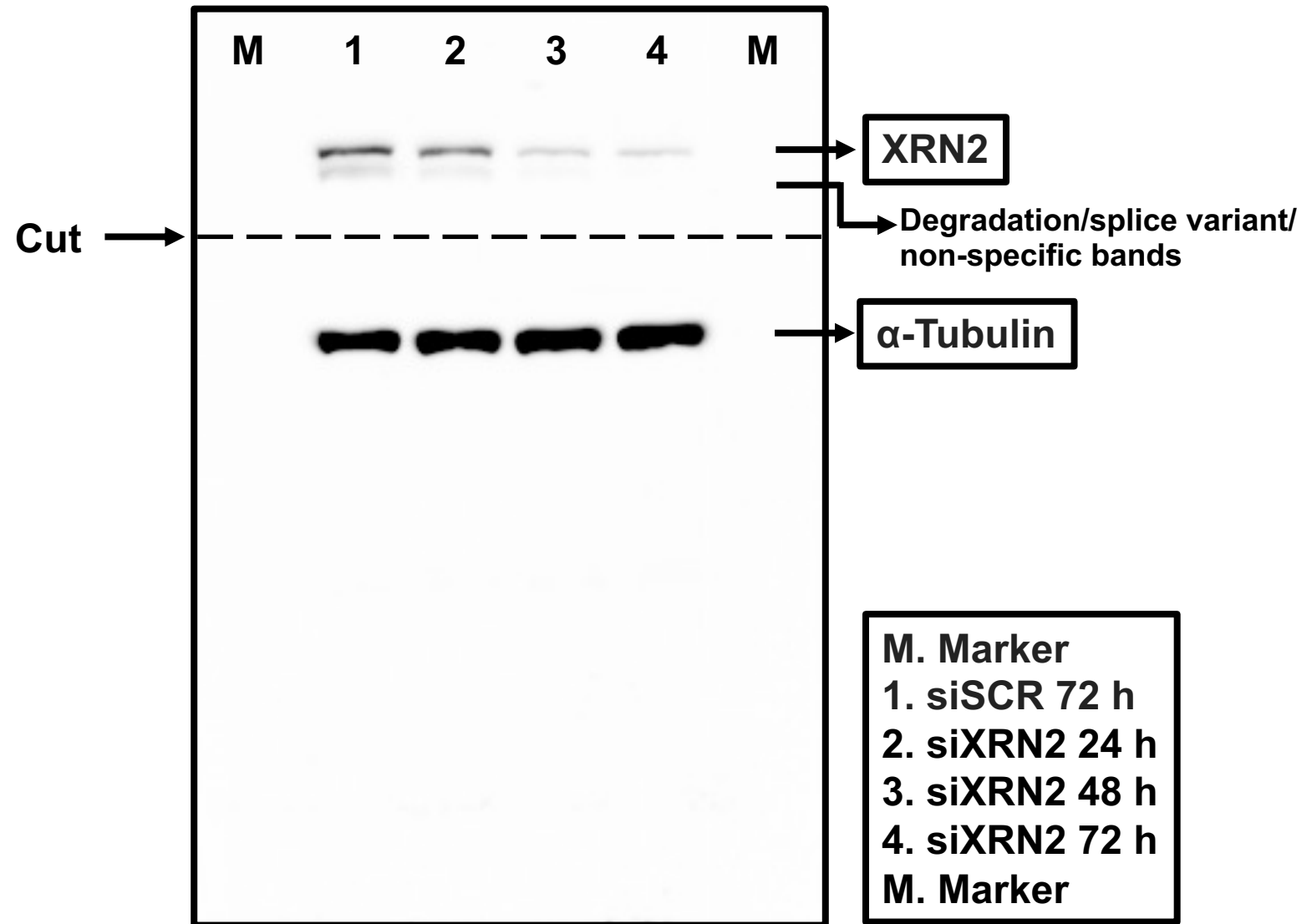


Figure S1 Figure 1F Supplementary

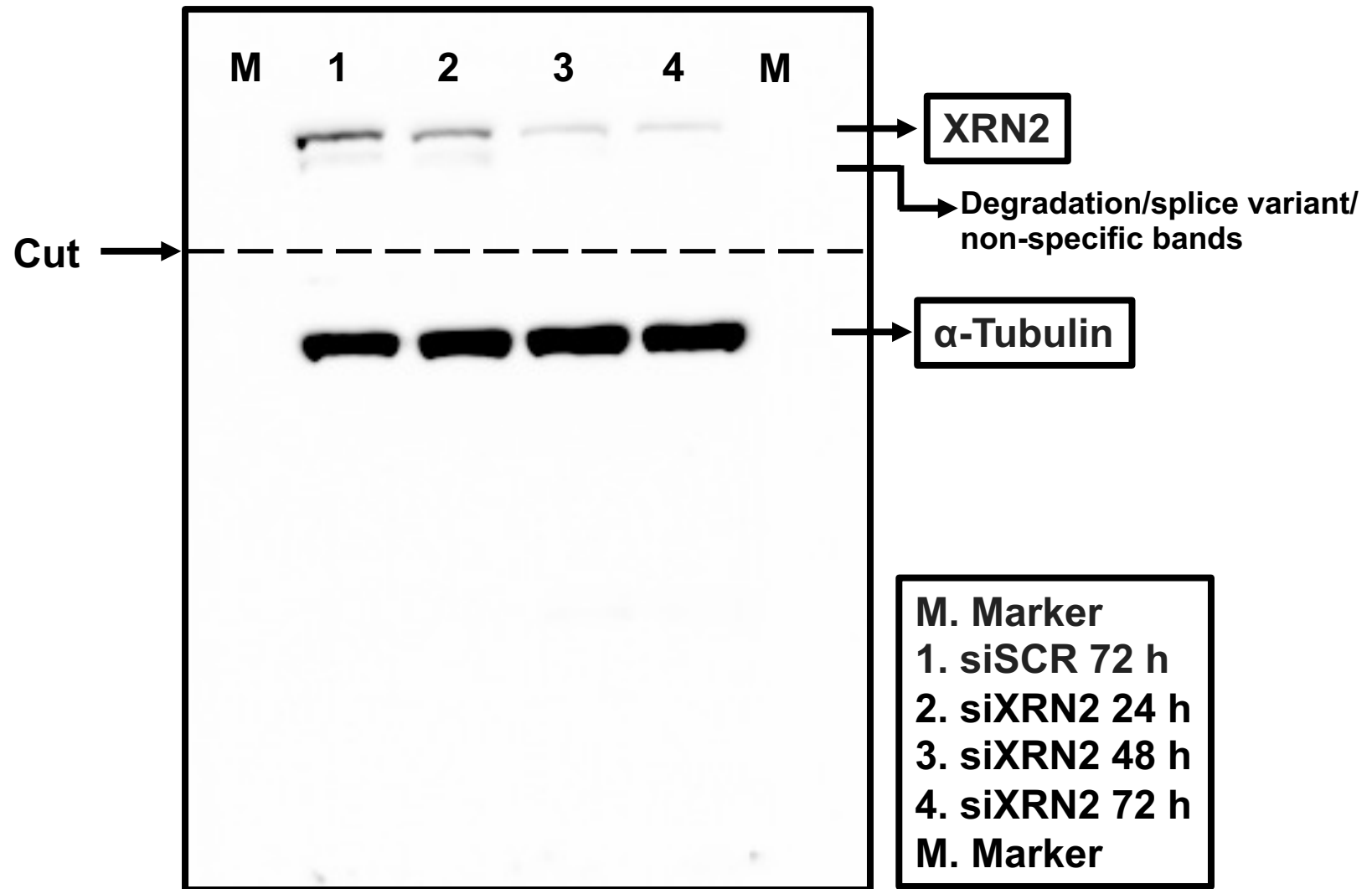


Figure S1

Figure 1I Supplementary

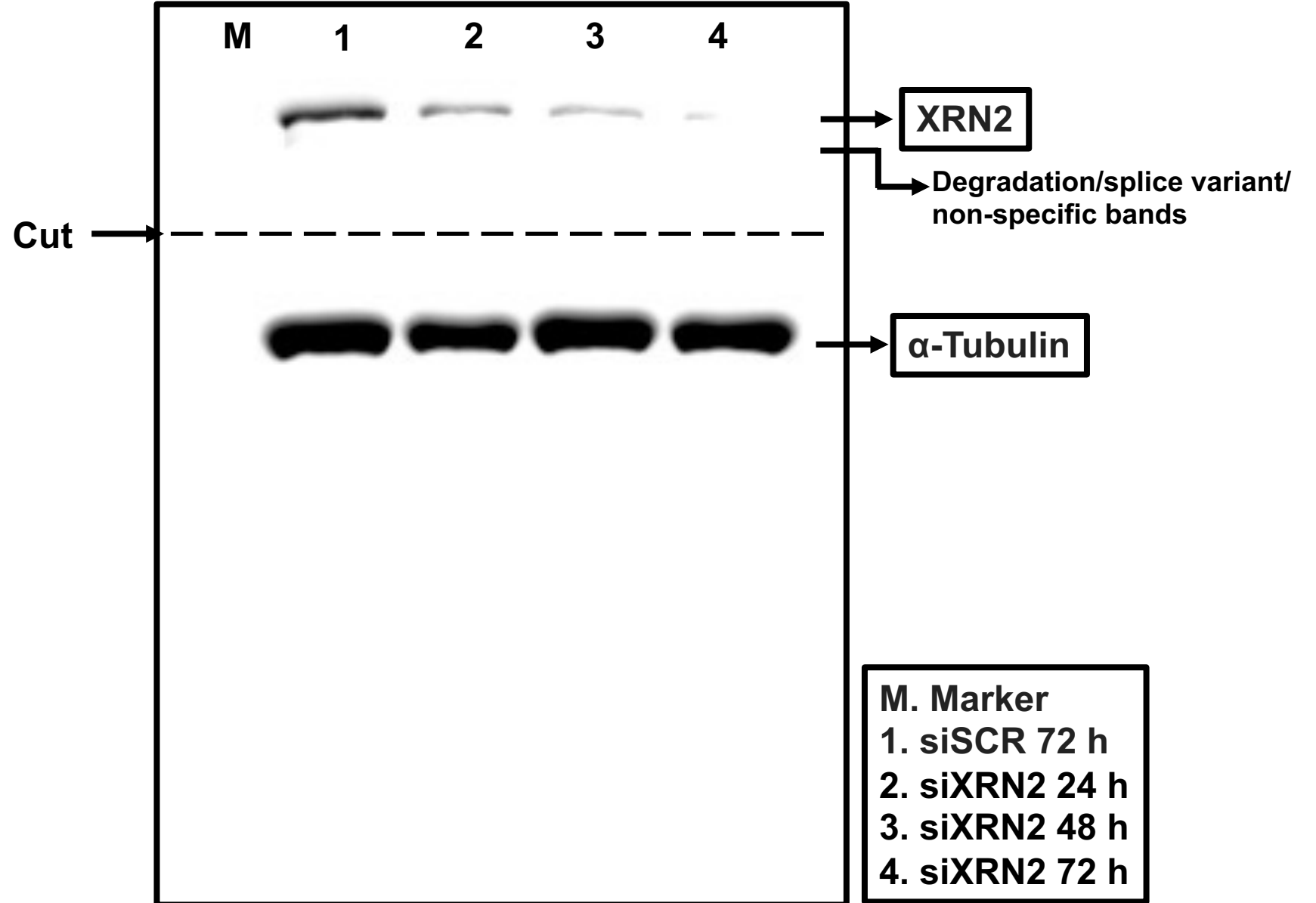


Figure S1 Figure 1L Supplementary

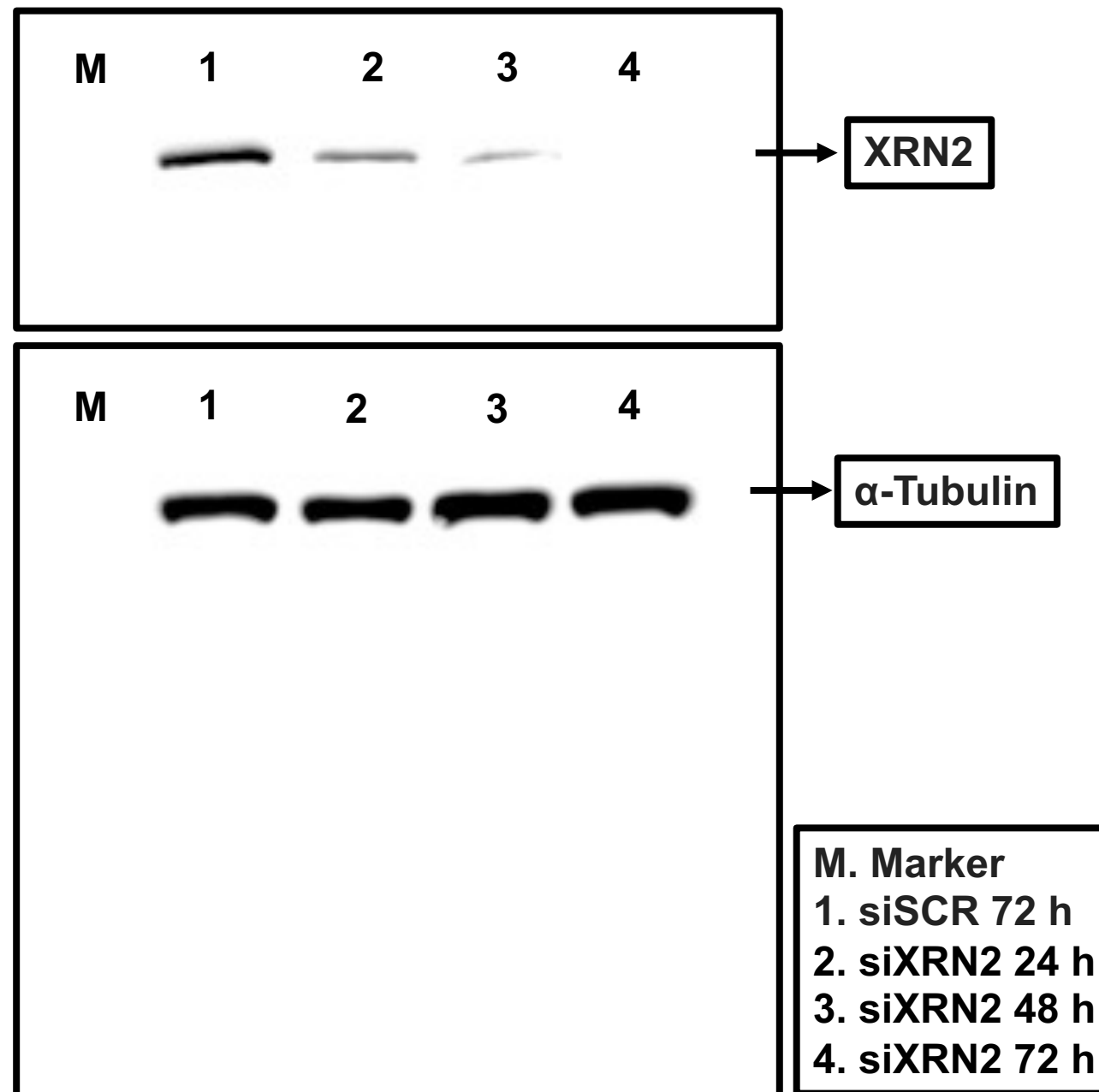


Figure S2 Figure 2D Supplementary

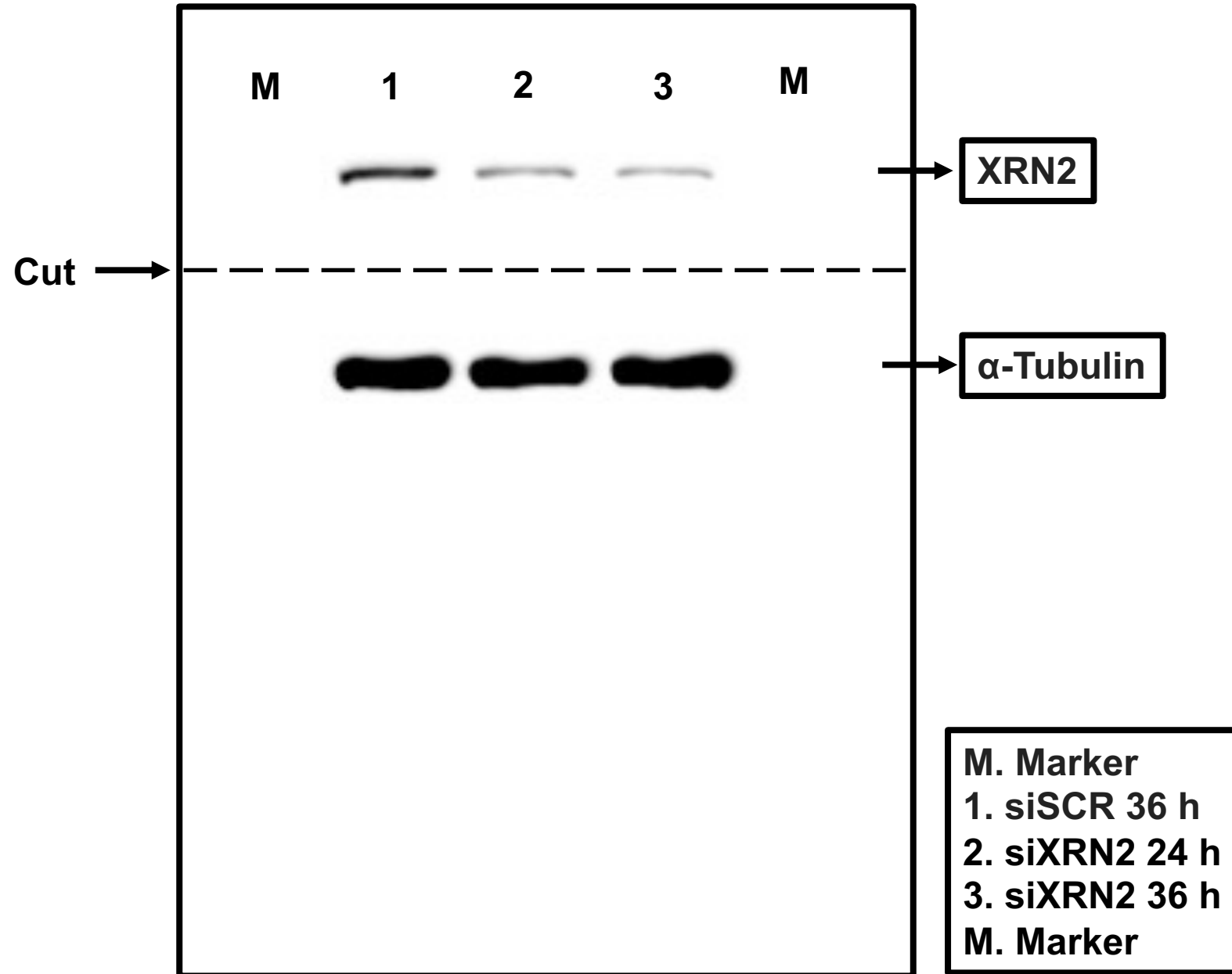


Figure S2 Figure 2G Supplementary

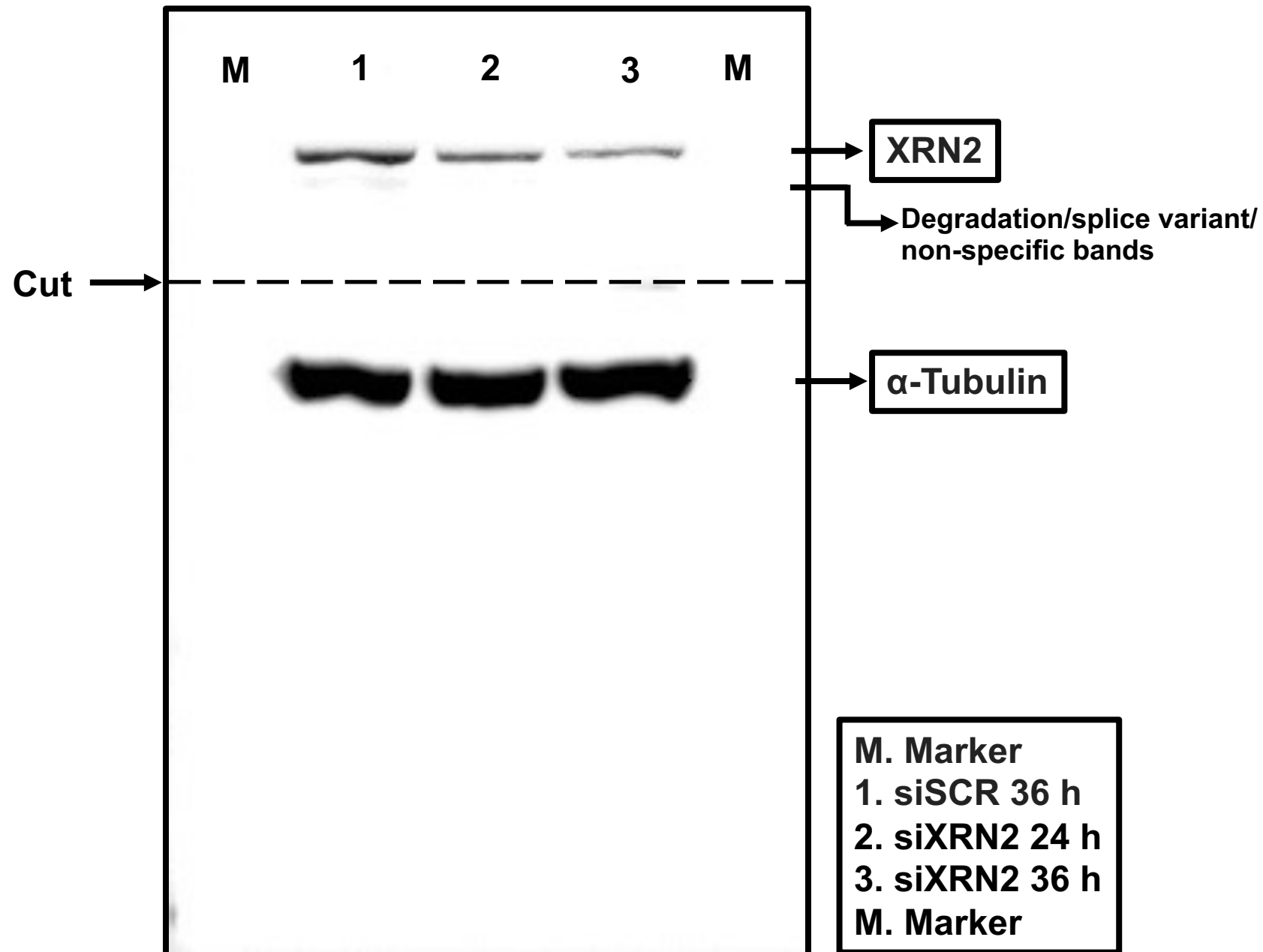


Figure S3 Figure 3C Supplementary

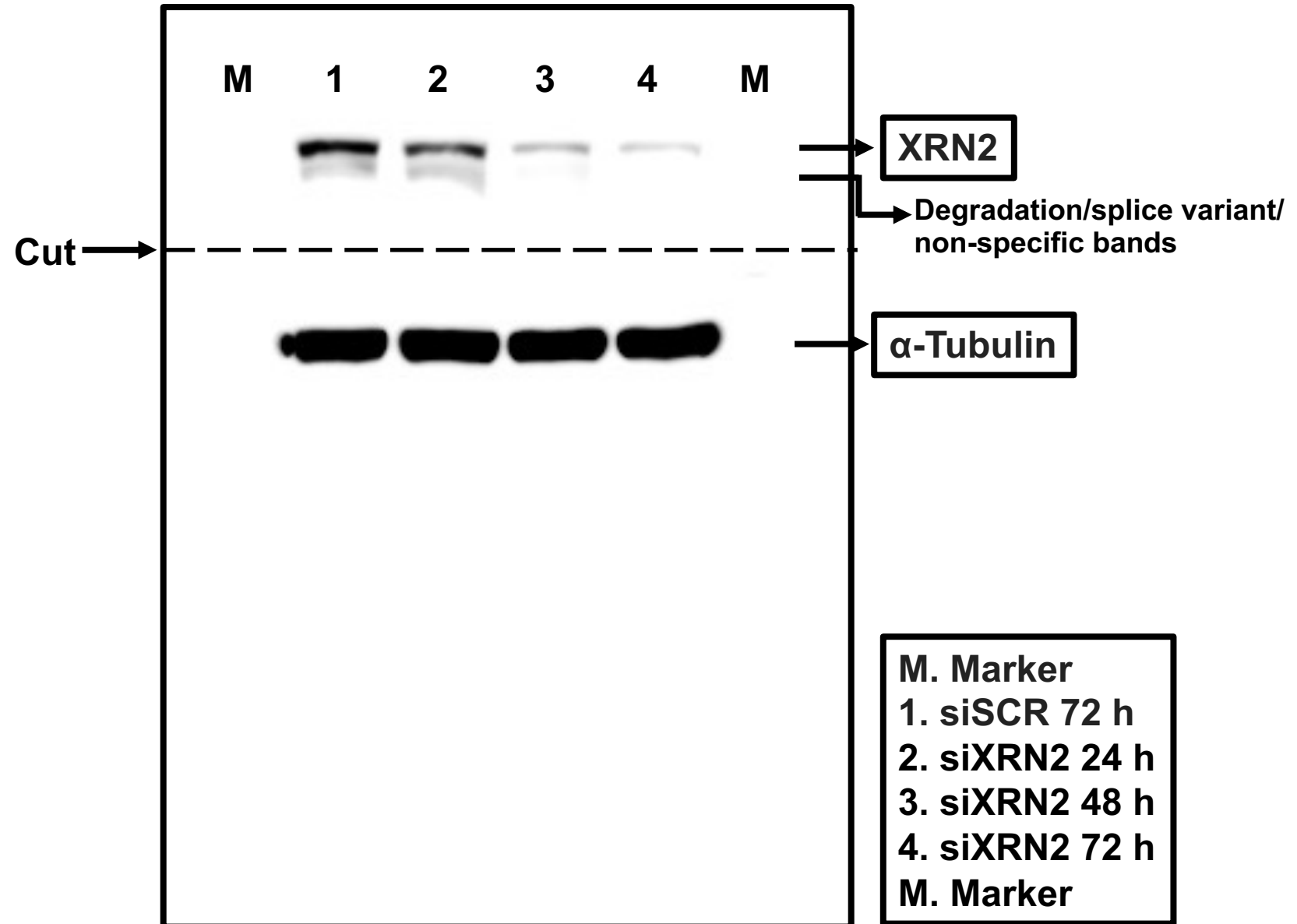


Figure S3 Figure 3F Supplementary

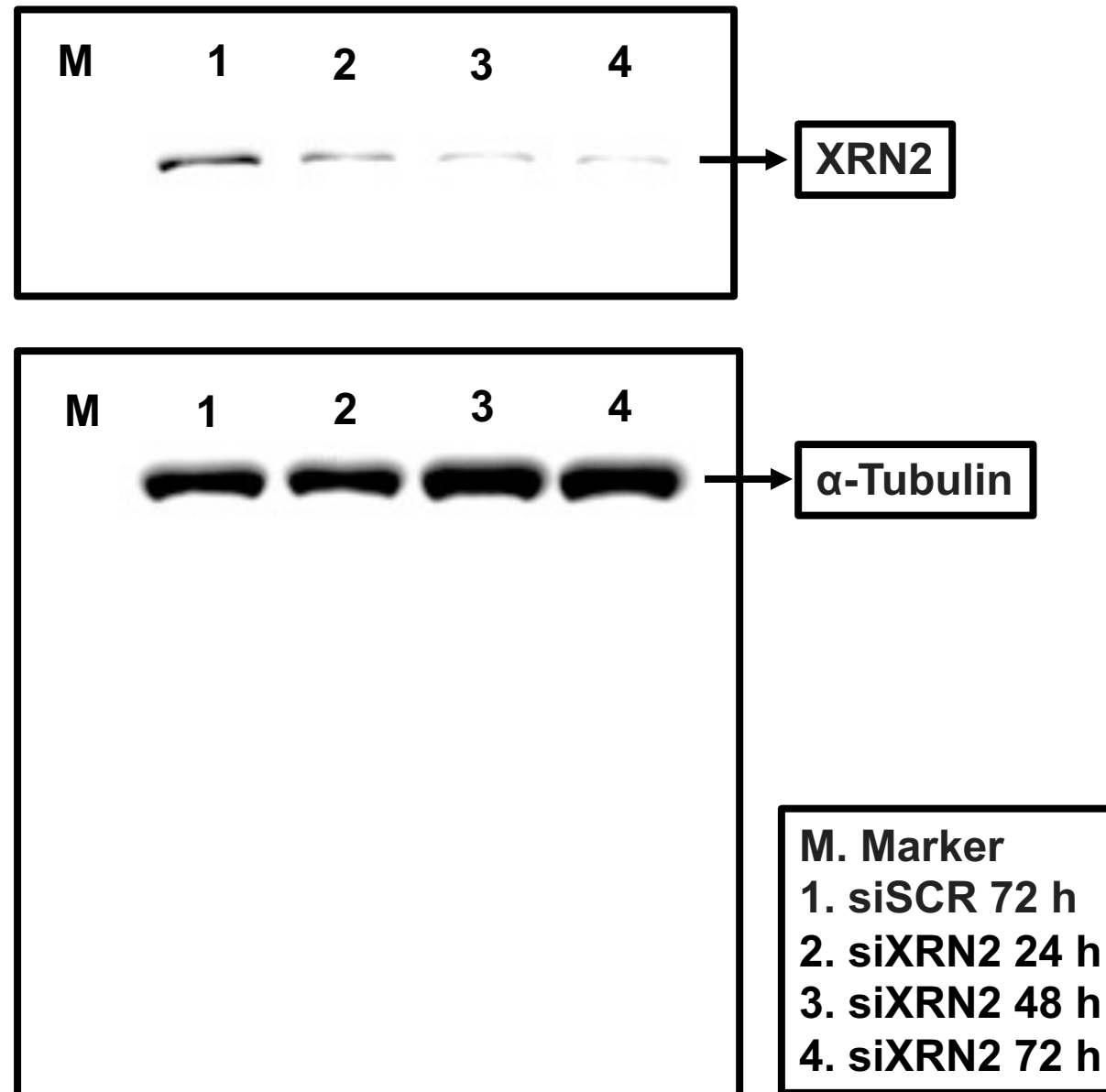


Figure S4 Figure 4D Supplementary

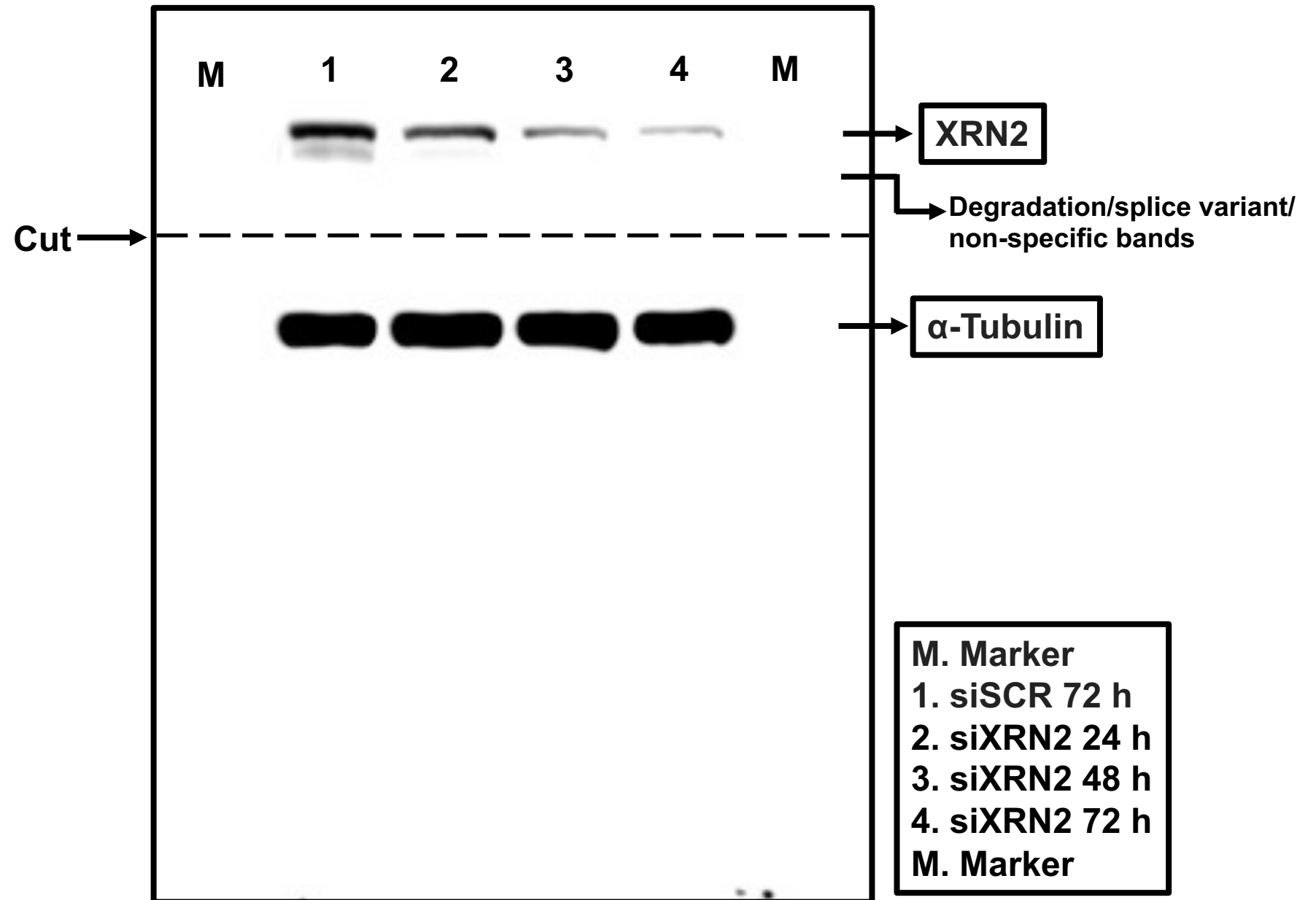


Figure S4 Figure 4H Supplementary

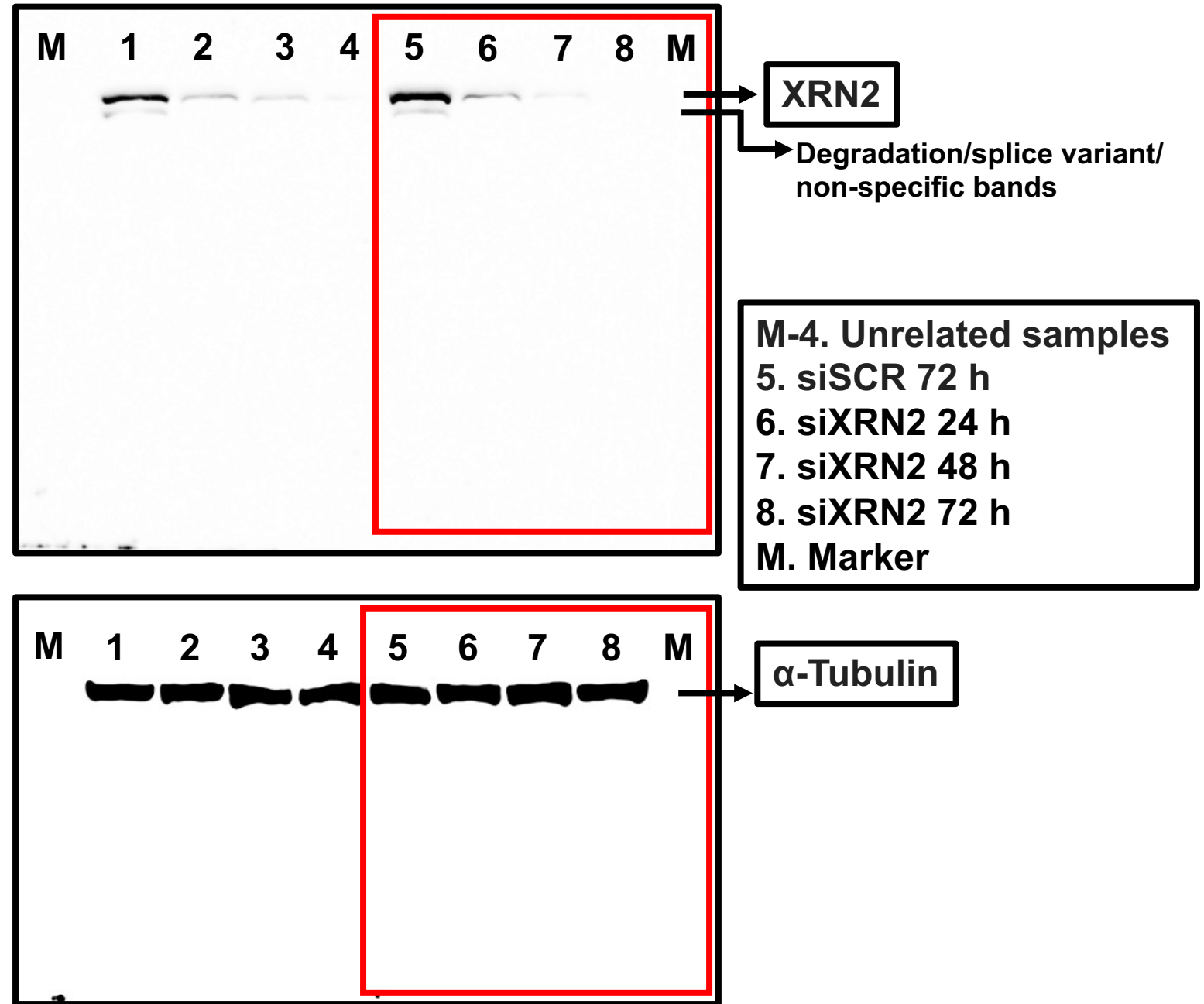


Figure S5 Figure 5B Supplementary

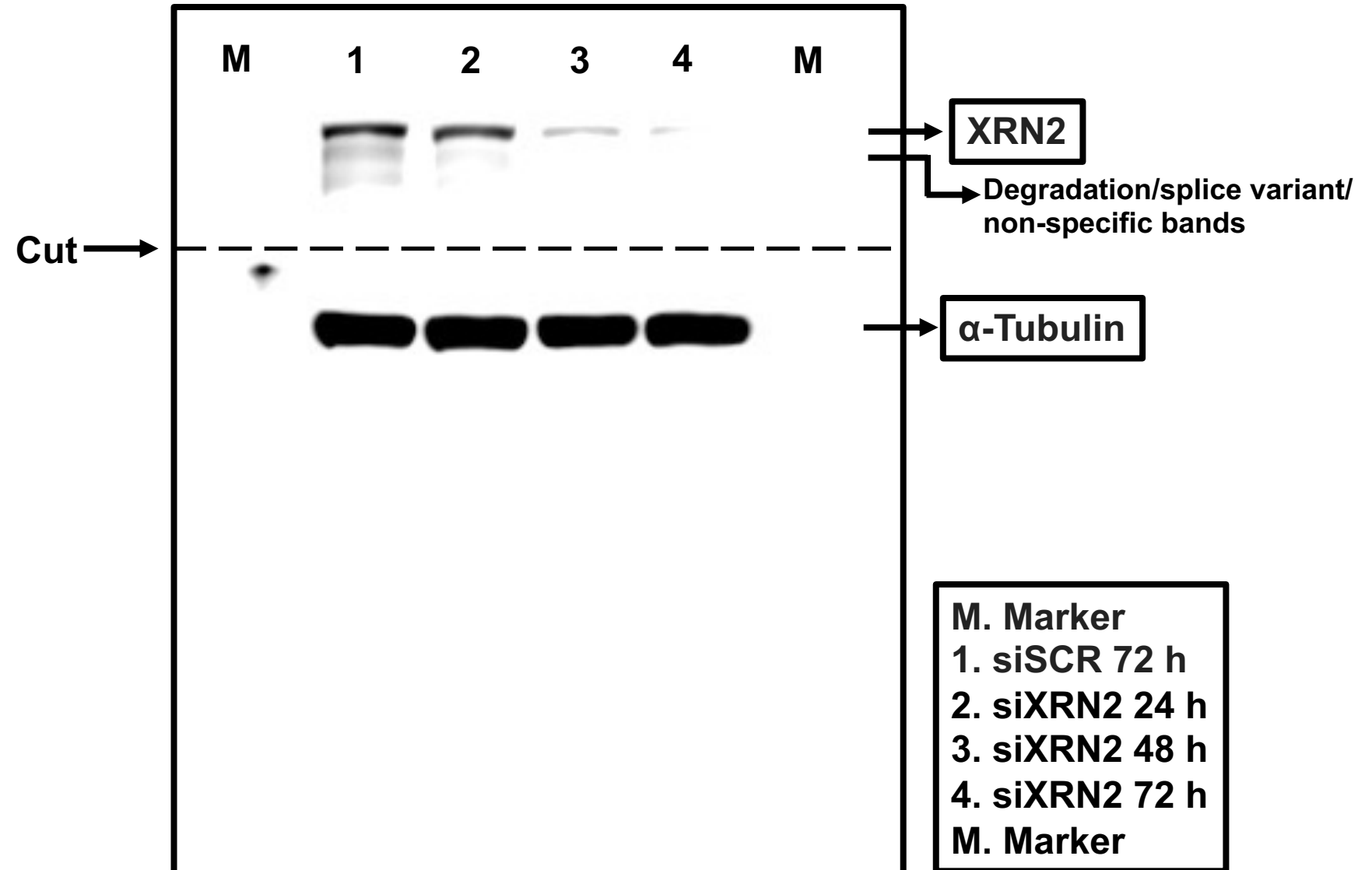
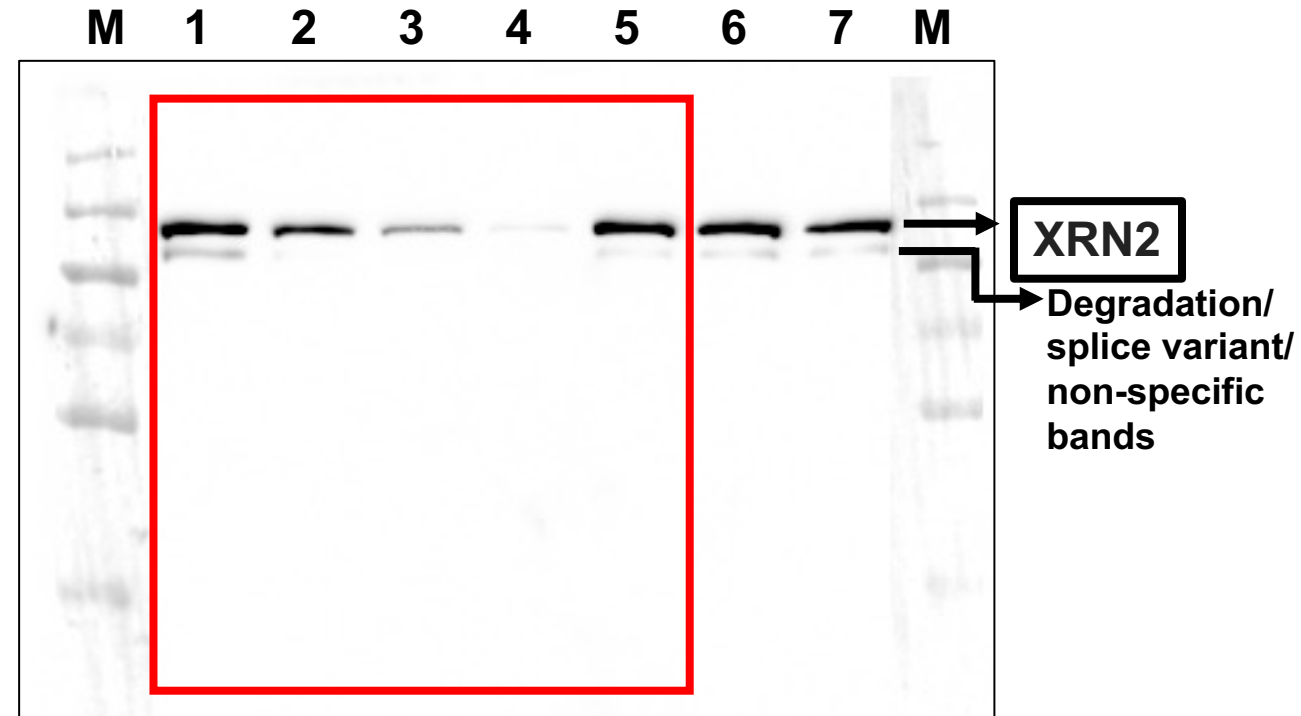
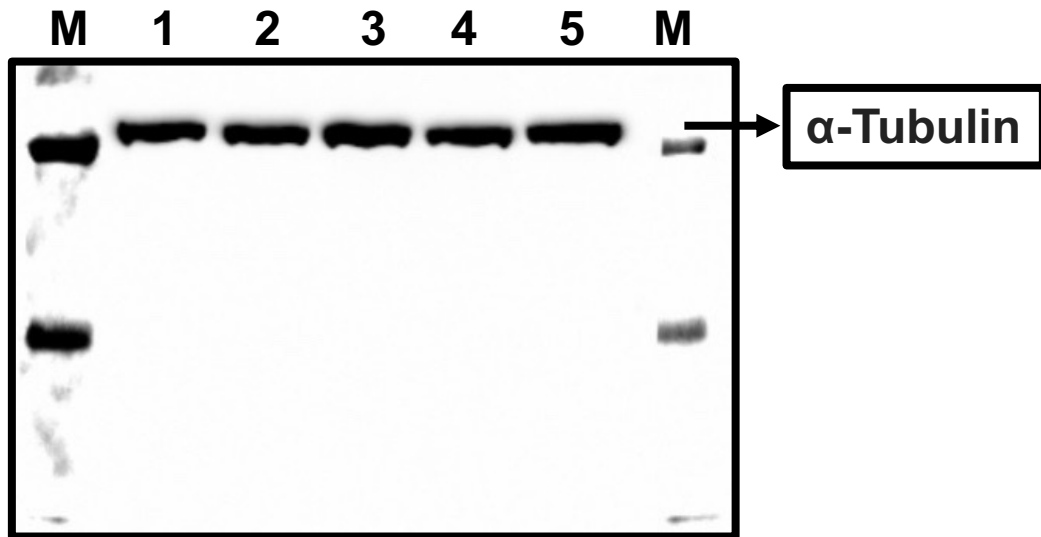
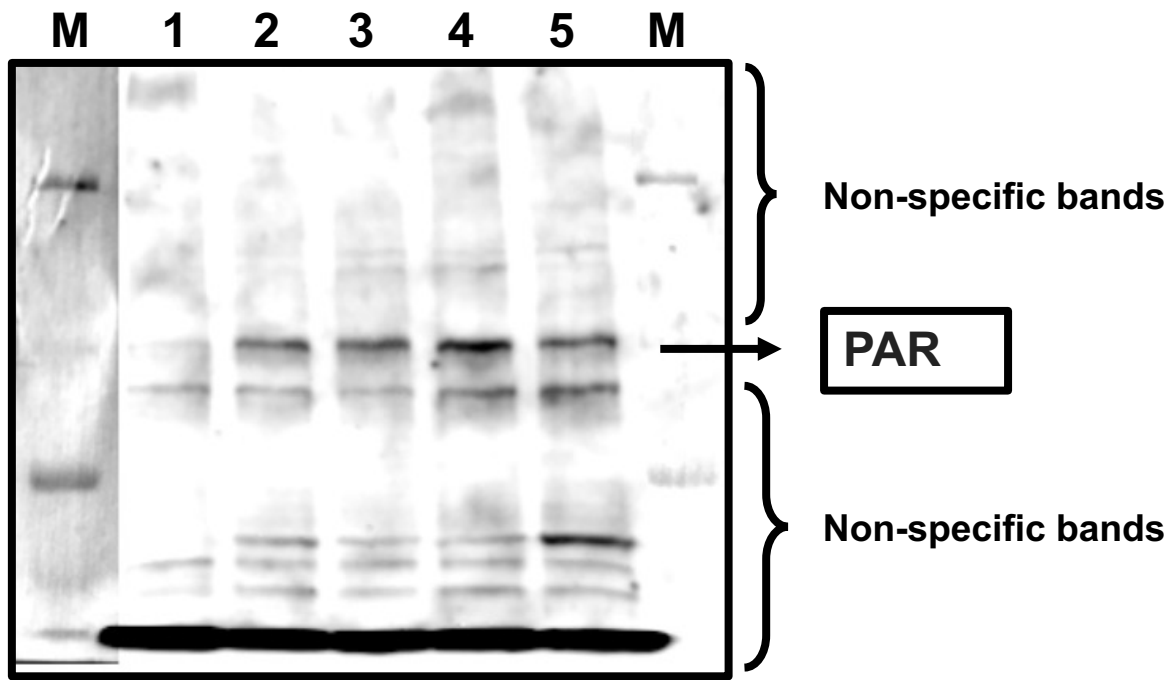


Figure S5 Figure 5D Supplementary



M. Marker
1. siSCR 72 h
2. siXRN2 24 h
3. siXRN2 48 h
4. siXRN2 72 h
5. H₂O₂
6-7. Unrelated
M. Marker

Figure S5 Figure 5E Supplementary

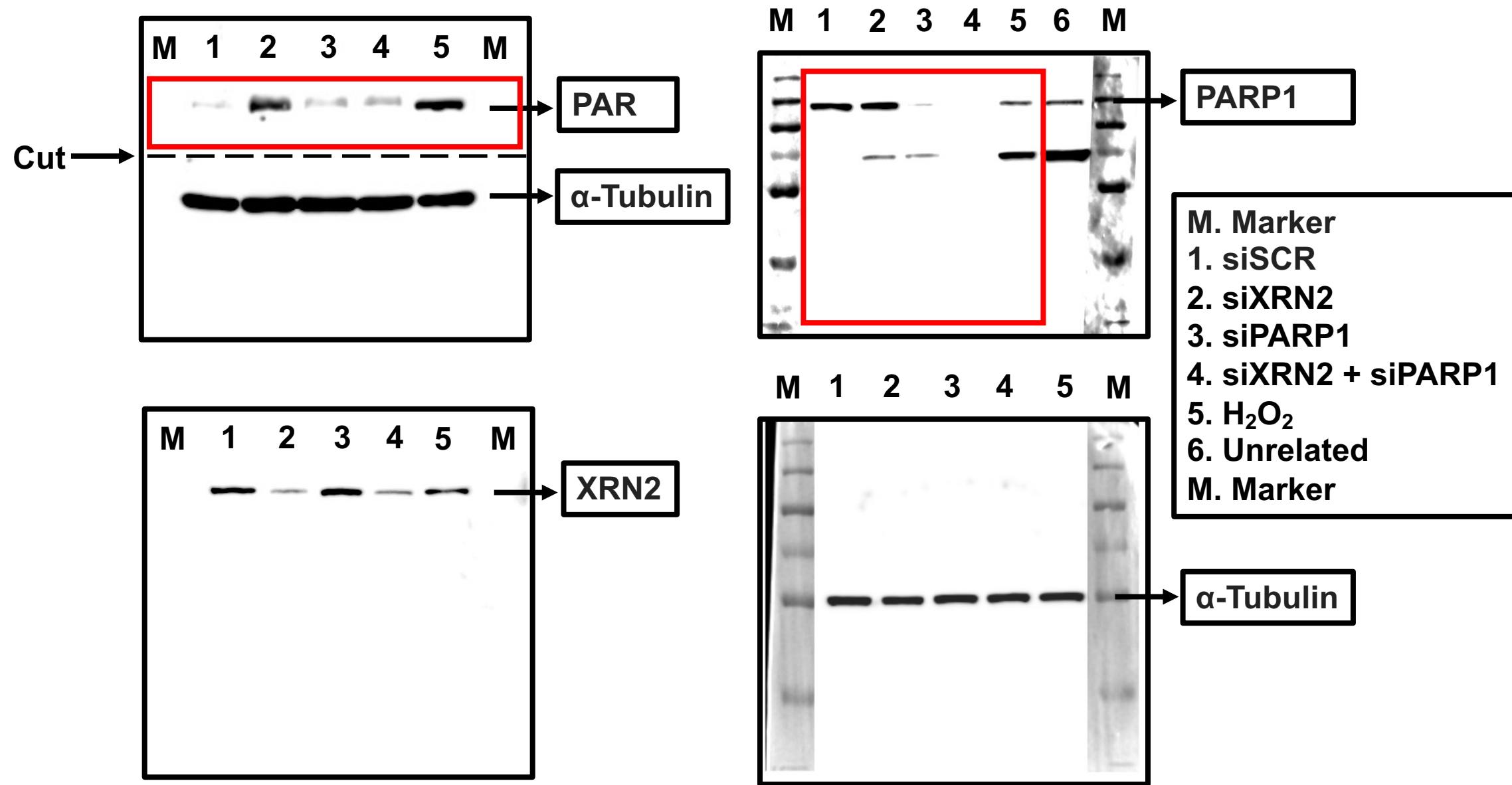


Figure S5 Figure 5I Supplementary

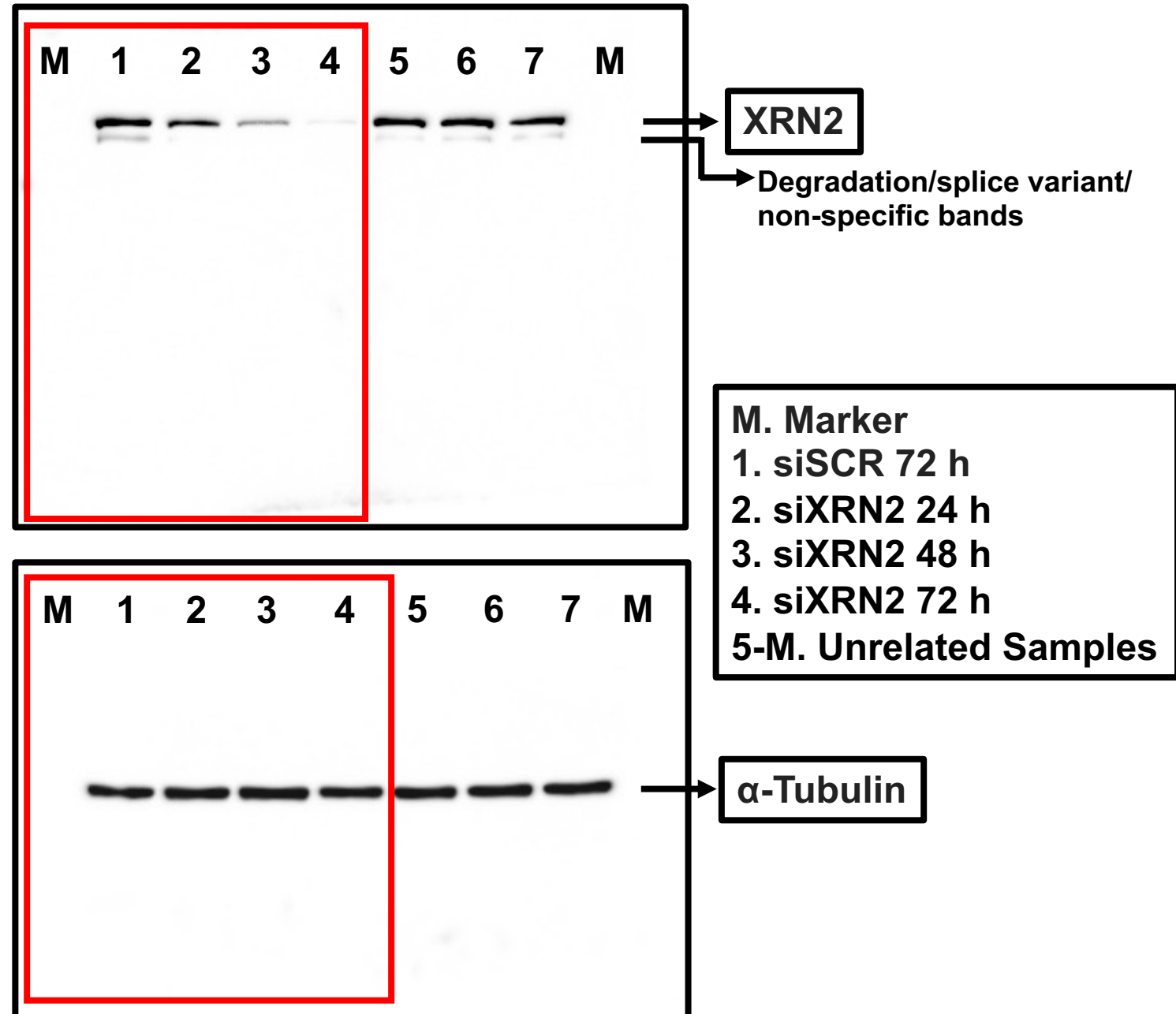


Figure S6 Figure 6D Supplementary

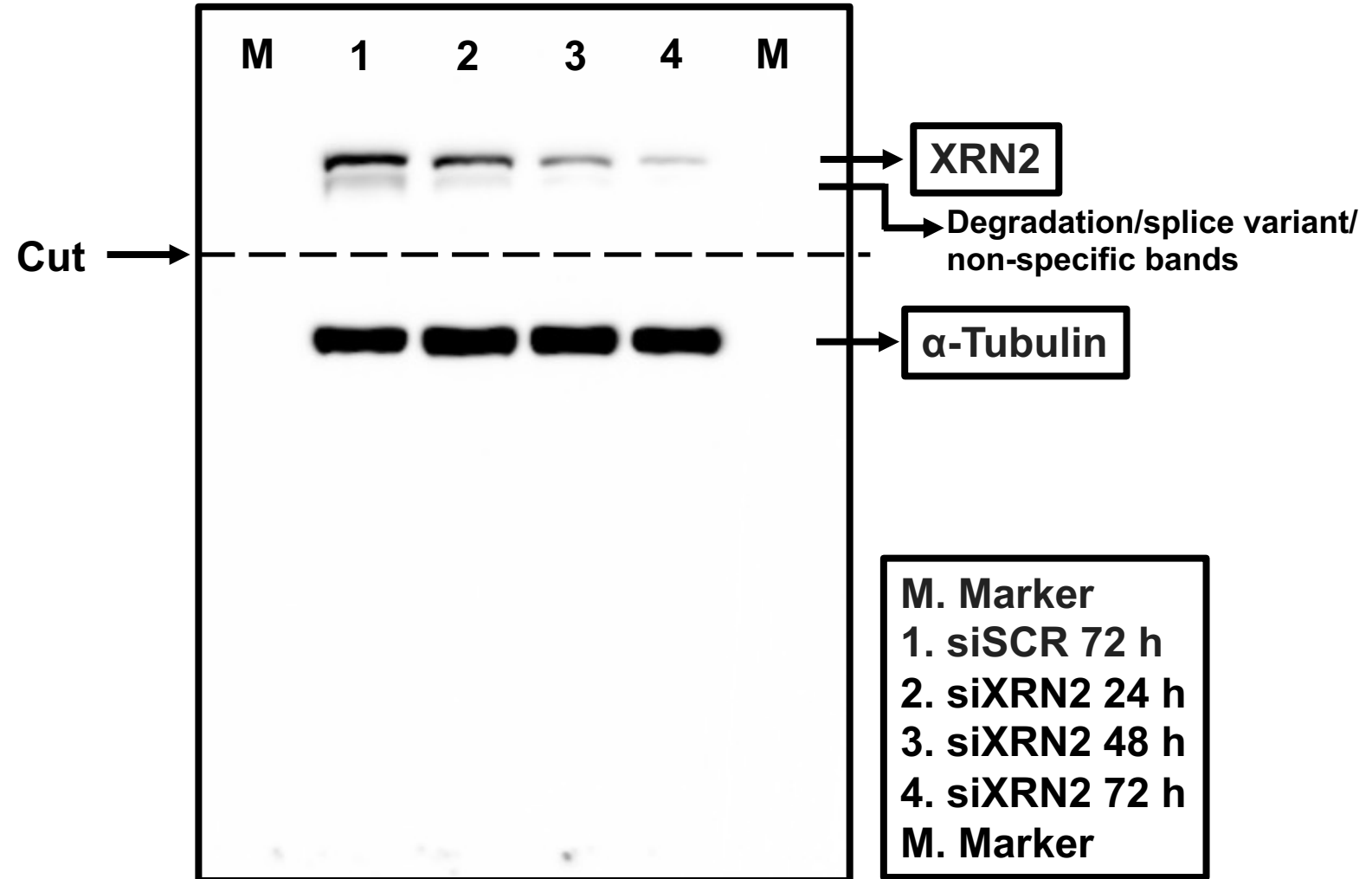


Figure S6 Figure 6H Supplementary

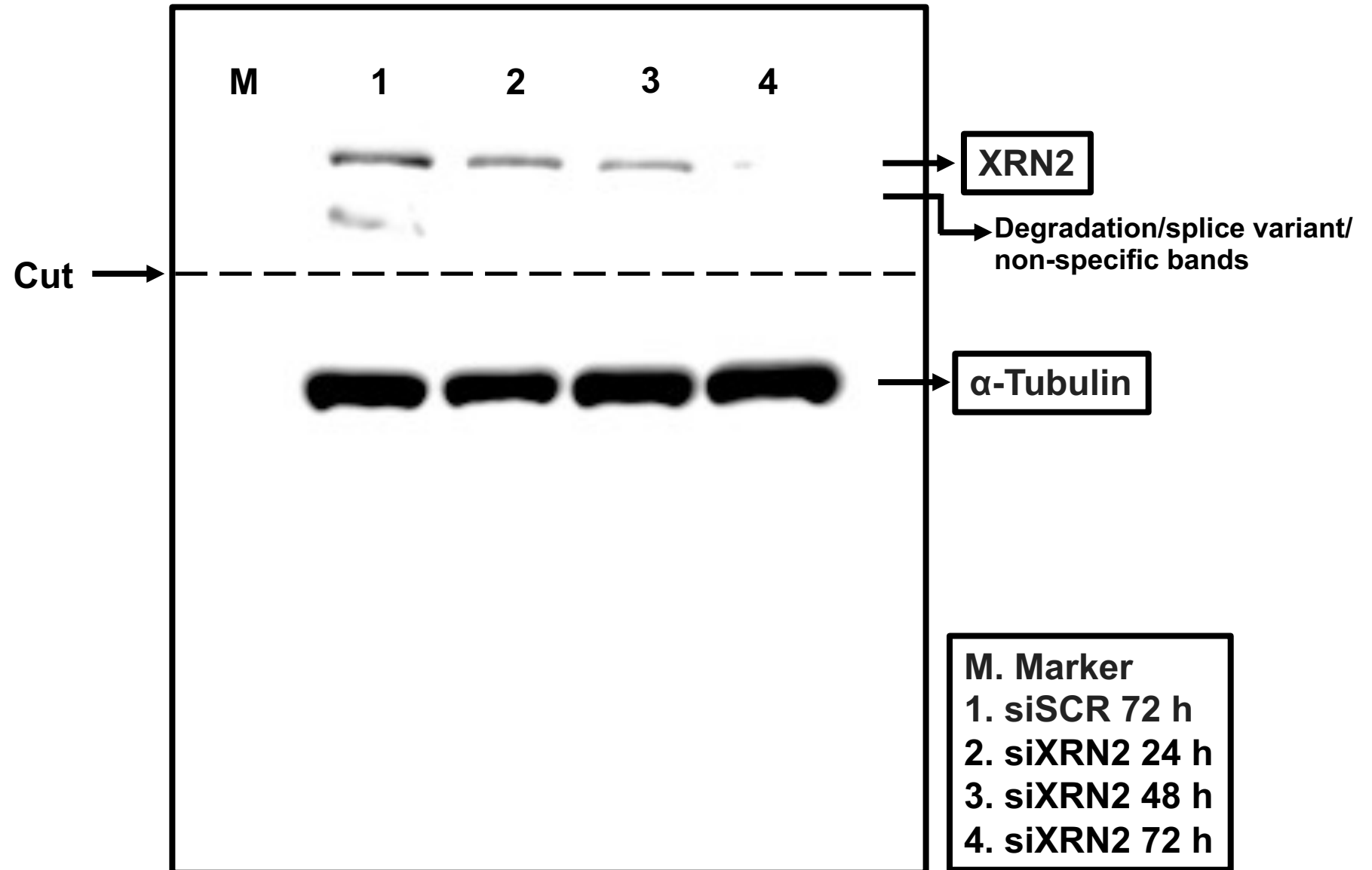


Figure S7 Figure 7C Supplementary

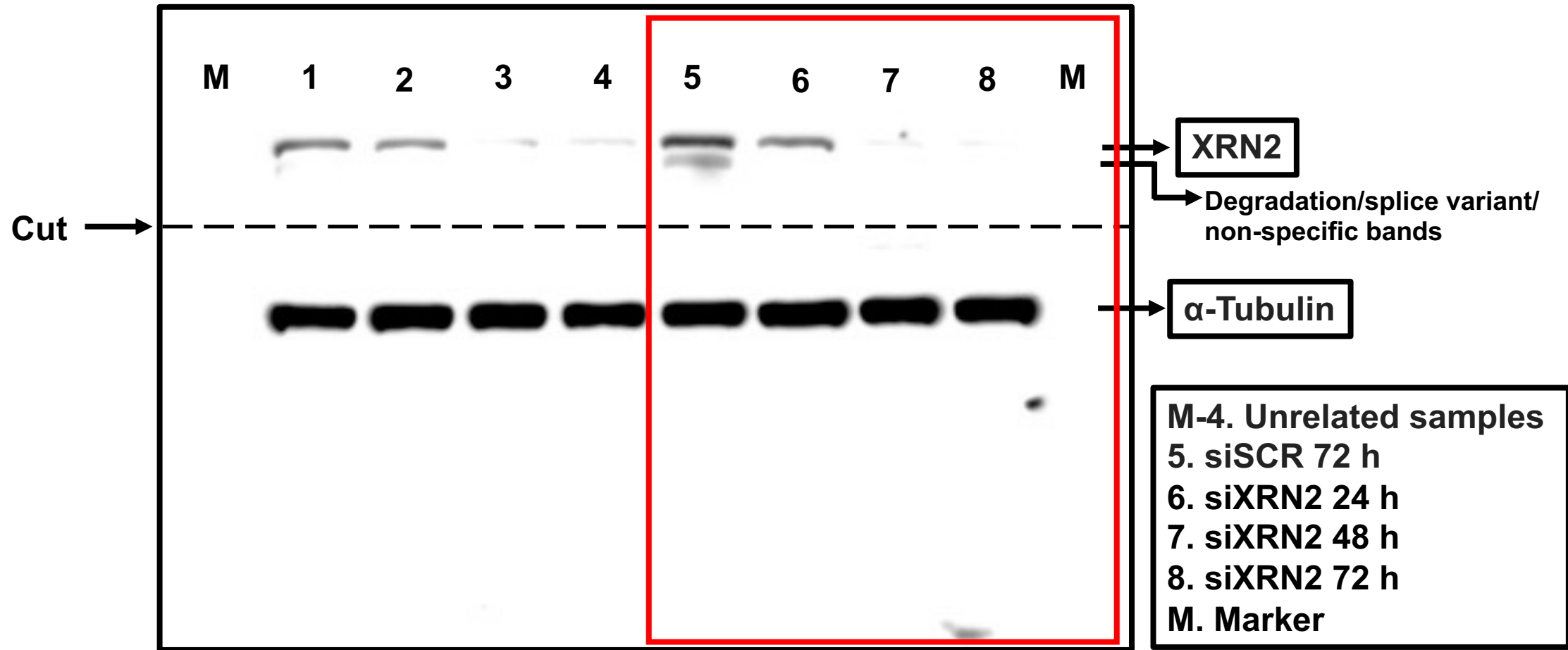


Figure S7 Figure 7F Supplementary

