

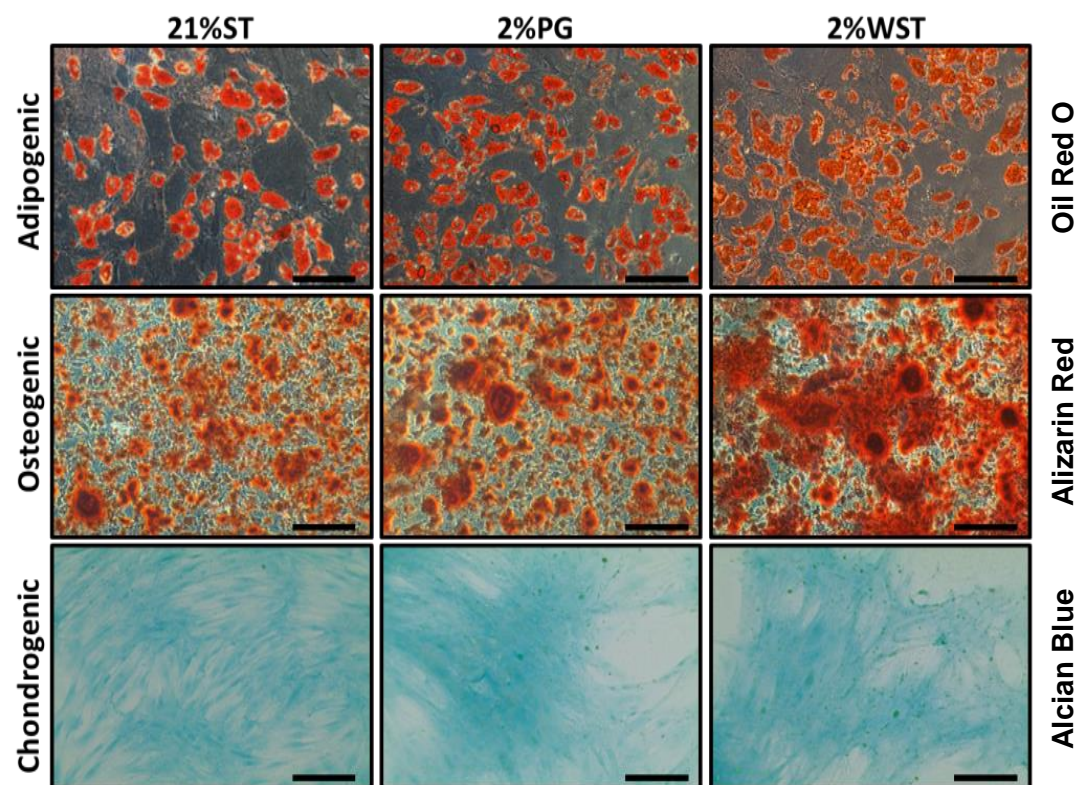
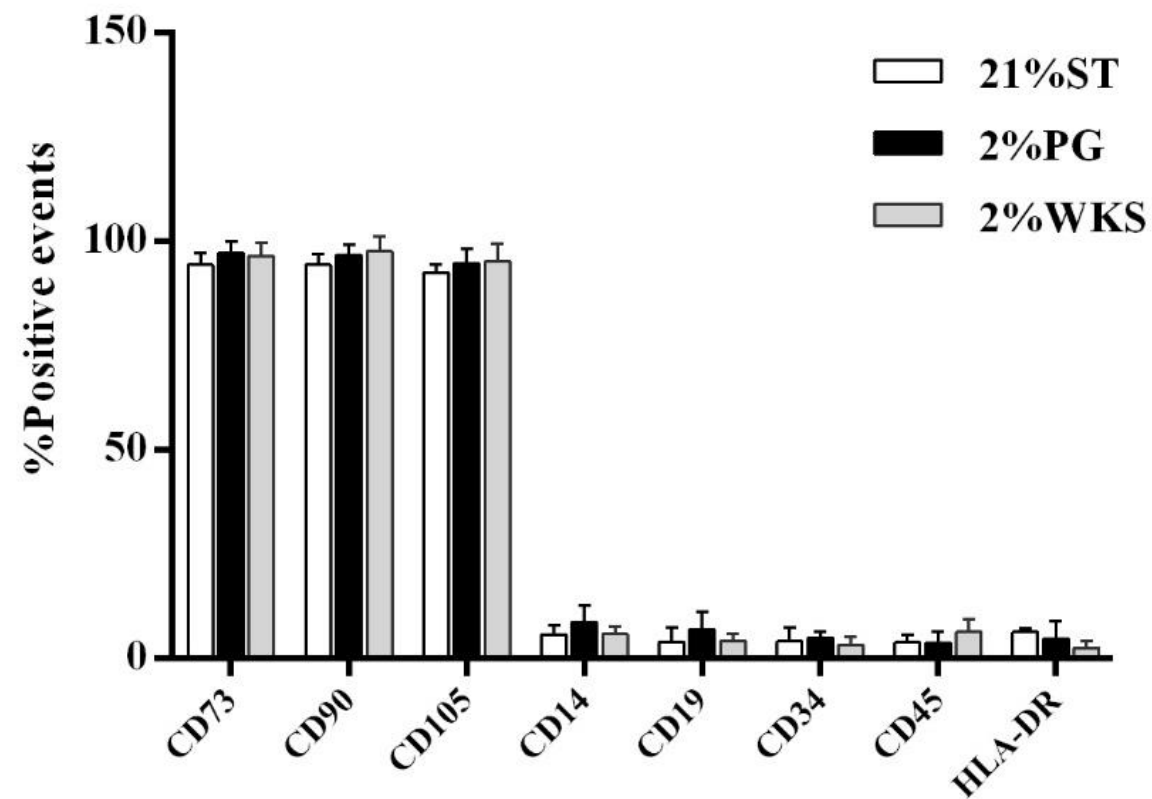
A**B**

Figure S1. Immunophenotypic characterisation of BM- hMSCs. **(A)** Tri-lineage differentiation of MSC into adipocyte, osteocyte, and chondrocyte the scale bar equal 100 μm for all image. **(B)** The percentage of positive event was quantified relative to the relevant isotype control marker; IgG1 (CD73, CD90, CD105, and CD19) or IgG2 (CD14, CD34, CD45, and HLA-DR((Human Leukocyte Antigen – DR isotype))). Expression of typically negative (CD14, CD19, CD37, CD45, HLA-DR) and typically positive (CD90, CD73 and CD105) MSC markers in the human mesenchymal stem cells. Y-axis indicates surface markers. X-axis indicates % of positive events. The values are mean ($n=3$) and the error bar indicate standard deviation (SD).