

Supplementary Figures

The sequence of application the samples into the gel wells was individually set for particular proteins.

Figure S1 Full unedited gel for Figure SPTLC. The sequence of application the samples into the gel wells: 1-4 lane –LFD sample, 5-8 lane – HFD+Sptlc2 sample, 22-25 lane – HFD *Sptlc2*-shRNA sample, 26 lane – Protein standard, the rest of the lane – other samples (not analyzed).

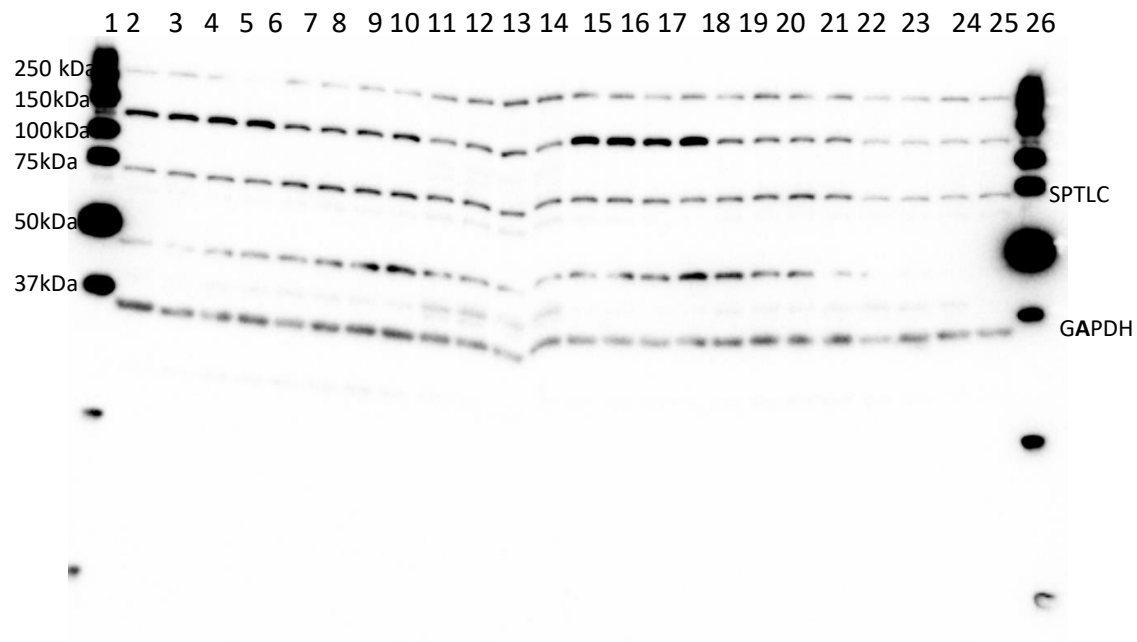


Figure S2 Full unedited gel for Figure pAkt(S473)/Akt. The sequence of application the samples into the gel wells: 1 lane – Protein standard, 2-5 lane – LFD sample, 6-9 lane – HFD+Sptlc2 sample, 22-25 lane – HFD Sptlc2-shRNA sample, 26 lane – Protein standard, the rest of the lane – other samples (not analyzed).

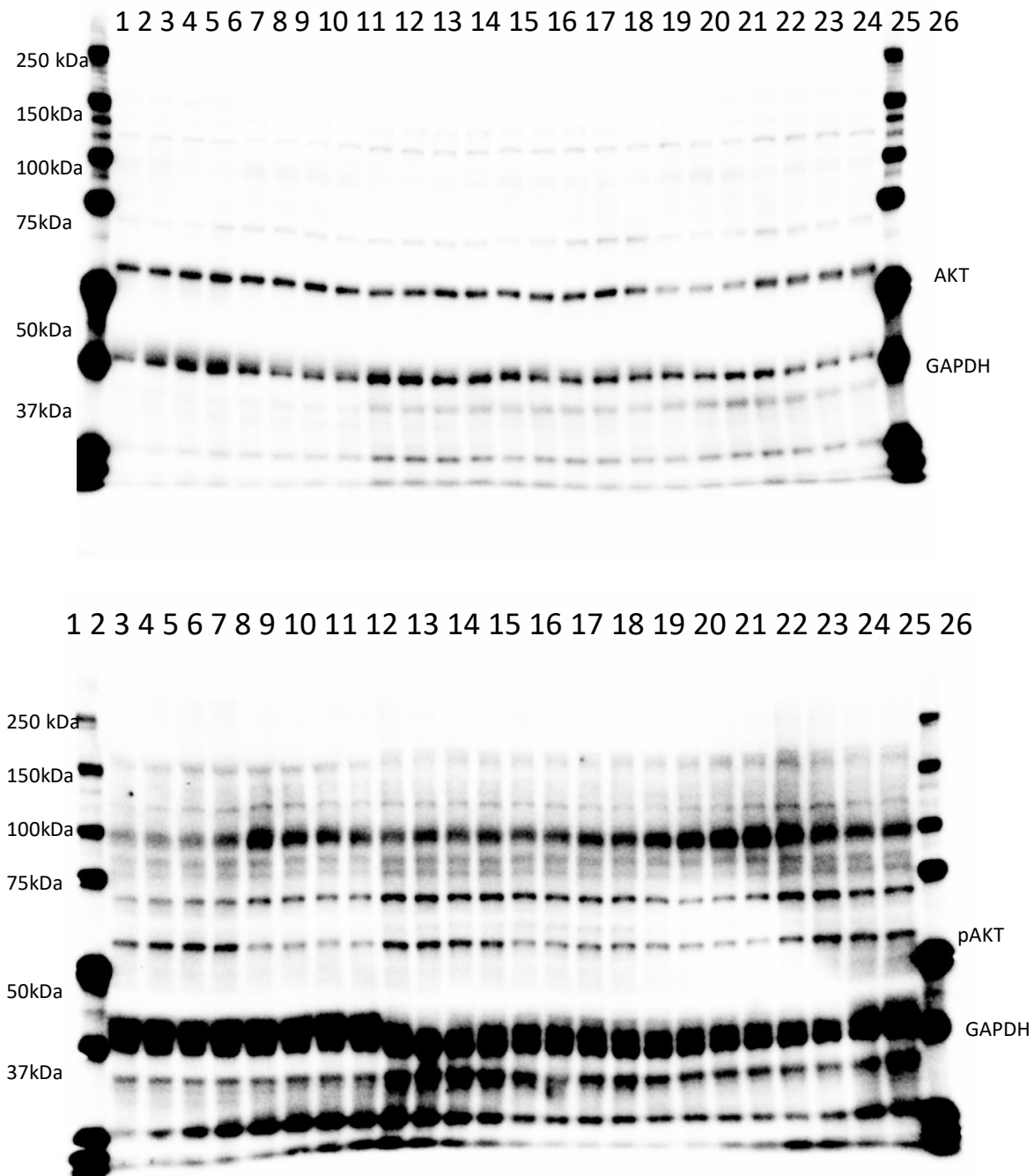


Figure S3 Full unedited gel for Figure CPT1B. **The sequence of application the samples into the gel wells:**
 1 lane – Protein standard, 2-5 lane – LFD sample, 6-9 lane – HFD+Sptlc2 sample, 18-21 lane – HFD Sptlc2-shRNA sample, 26 lane – Protein standard, the rest of the lane – other samples (not analyzed).

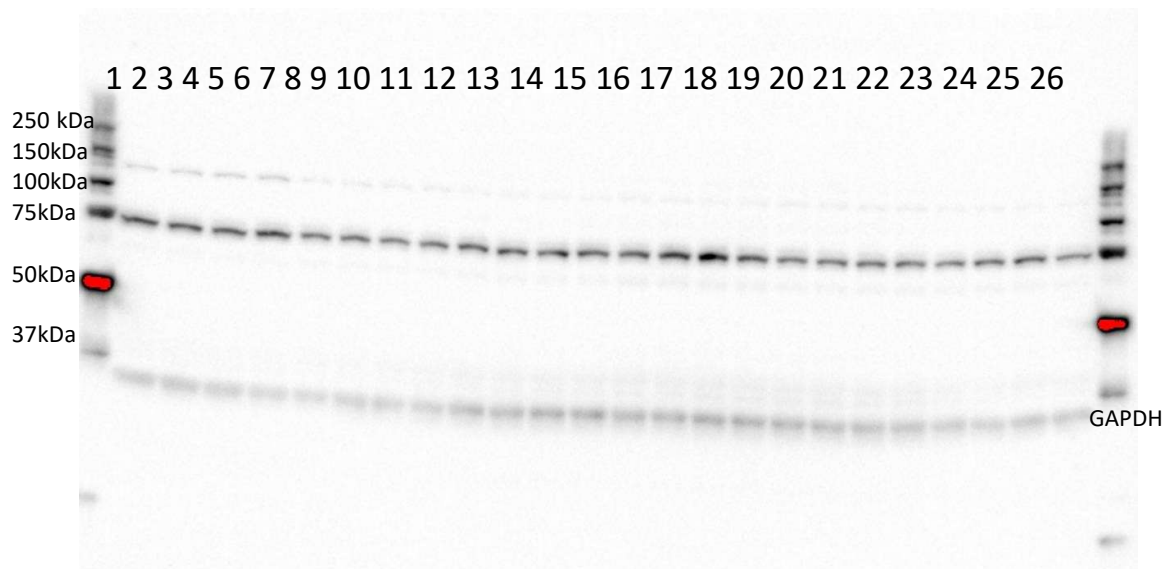
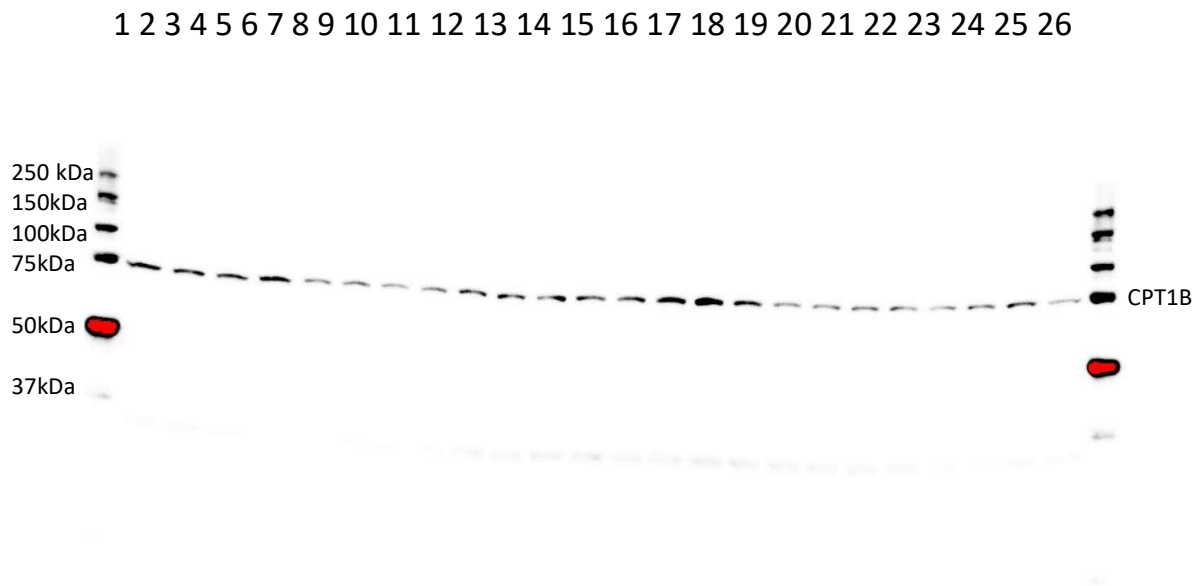


Figure S4 Full unedited gel for Figure FABPpm. **The sequence of application the samples into the gel wells:**
 1 lane – Protein standard, 2-5 lane – LFD sample, 6-9 lane – HFD+Sptlc2 sample, 18-21 lane – HFD Sptlc2-shRNA sample, the rest of the lane – other samples (not analyzed).

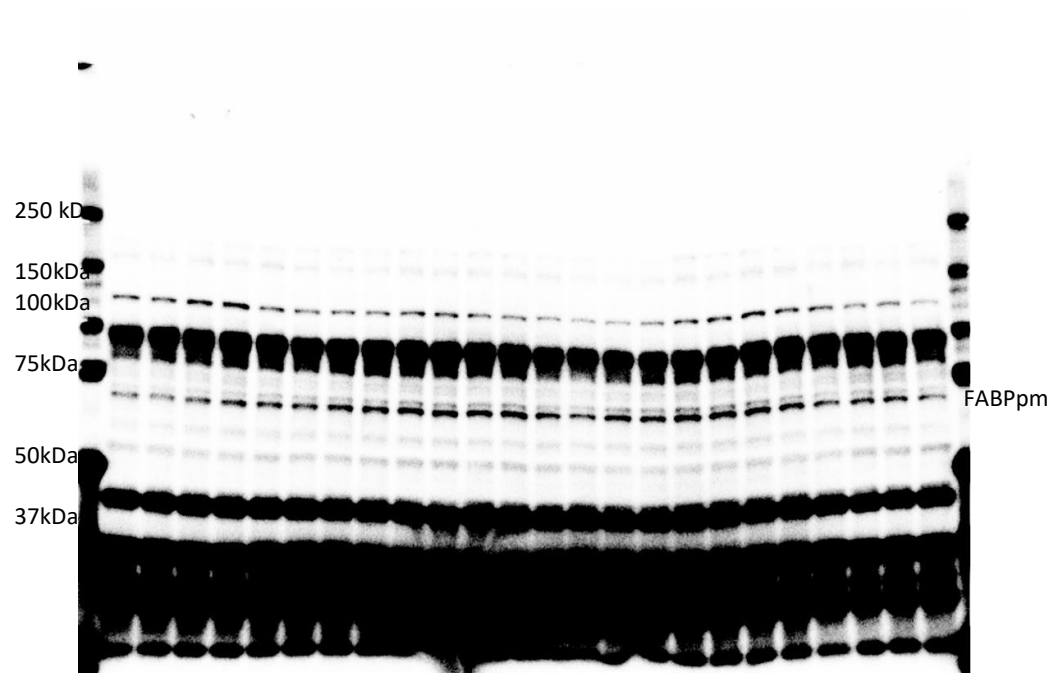


Figure S5 Full unedited gel for Figure GLUT4. **The sequence of application the samples into the gel wells:**
 1 lane – Protein standard, 2-5 lane – LFD sample, 6-9 lane – HFD+Sptlc2 sample, 18-21 lane – HFD Sptlc2-shRNA sample, 26 lane – Protein standard, the rest of the lane – other samples (not analyzed).

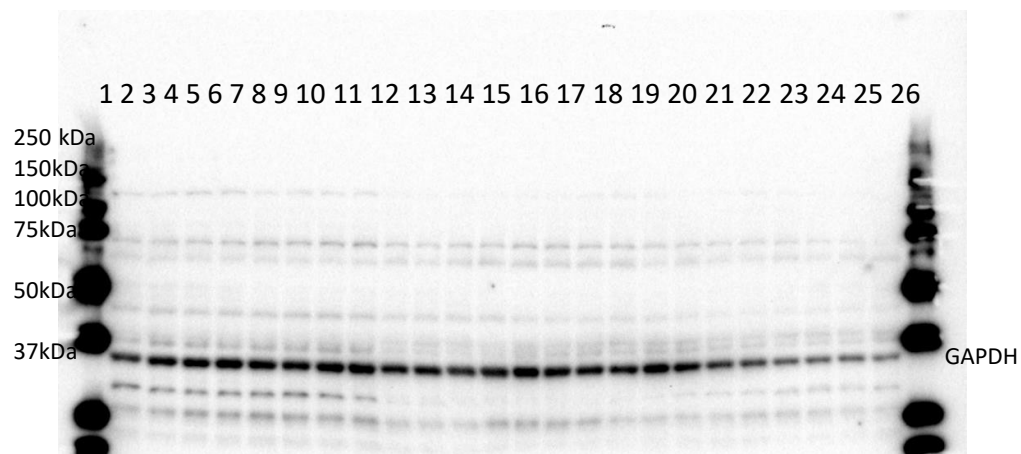
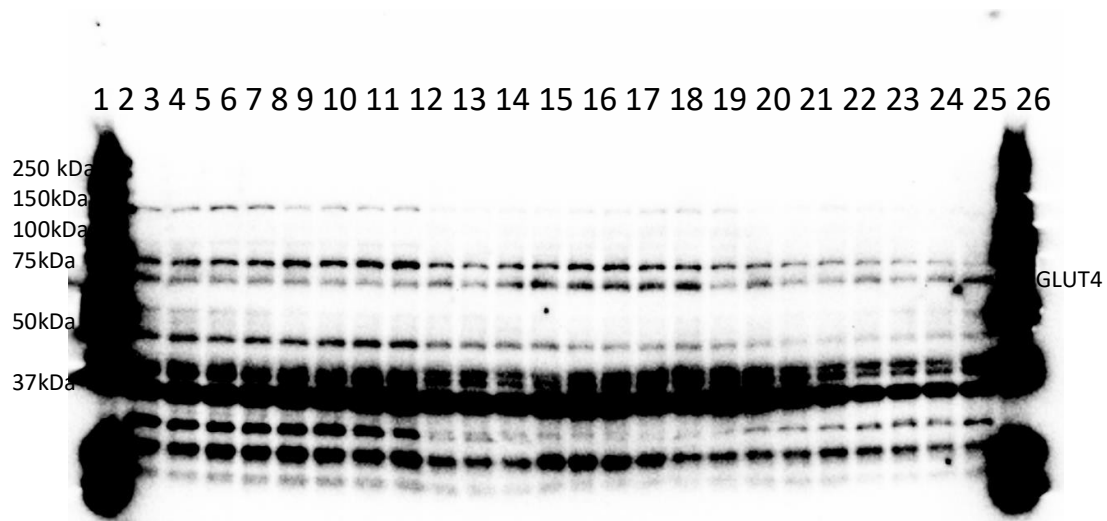


Figure S6 Full unedited gel for Figure FATP1. **The sequence of application the samples into the gel wells: 1**
lane – Protein standard, 2-5 lane – LFD sample, 6-9 lane – HFD+Sptlc2 sample, 18-21 lane – HFD Sptlc2-shRNA
sample, 26 lane – Protein standard, the rest of the lane – other samples (not analyzed).

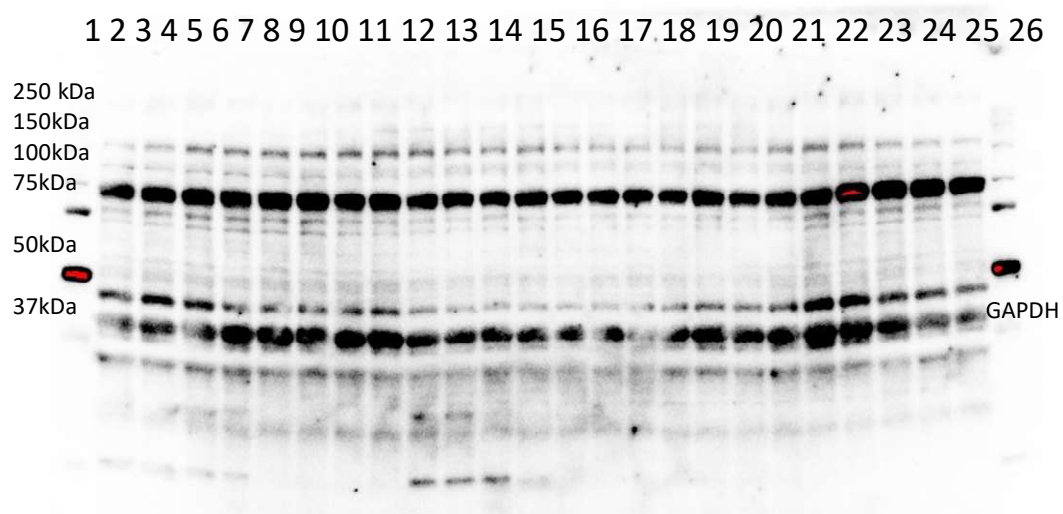
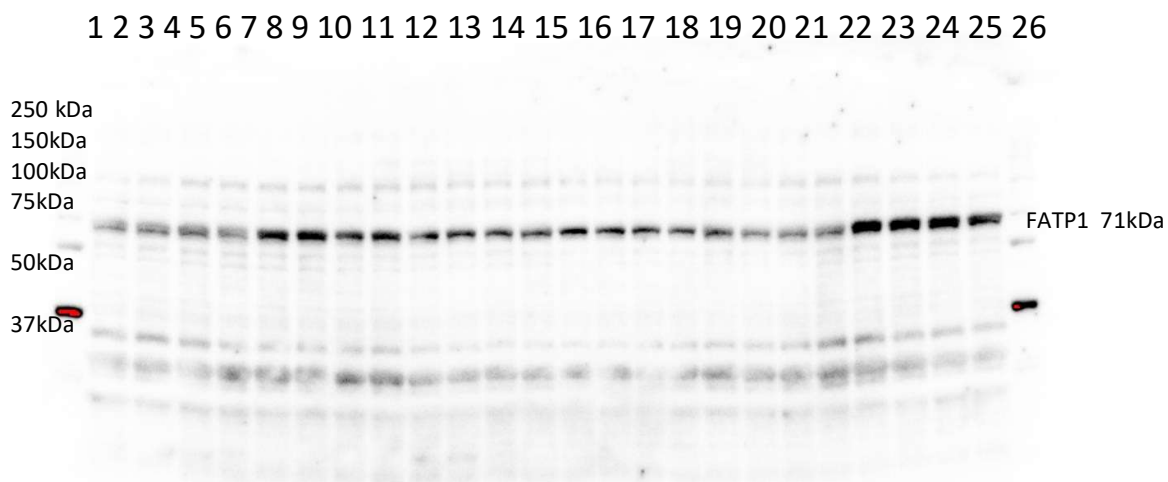
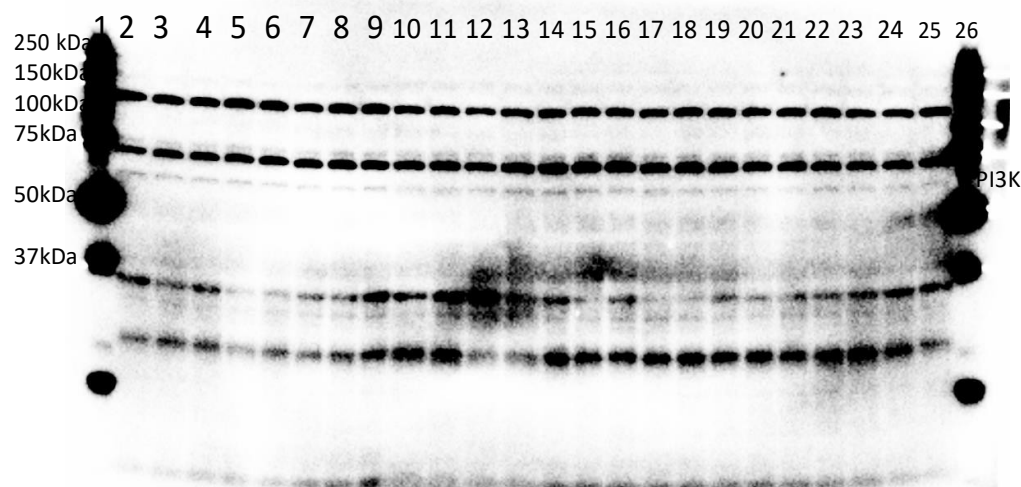


Figure S7 Full unedited gel for Figure CD36. **The sequence of application the samples into the gel wells:** 1 lane – Protein standard, 2-5 lane – HFD+Sptlc2 sample, 6-9 lane – LFD sample, 18-21 lane – HFD *Sptlc2*-shRNA sample, 26 lane – Protein standard, the rest of the lane – other samples (not analyzed).



Figure S8 Full unedited gel for Figure PI3K. **The sequence of application the samples into the gel wells:** 1 lane – Protein standard, 2-5 lane – LFD sample, 6-9 lane – HFD+Sptlc2 sample, 18-21 lane – HFD *Sptlc2*-shRNA sample, 26 lane – Protein standard, the rest of the lane – other samples (not analyzed).



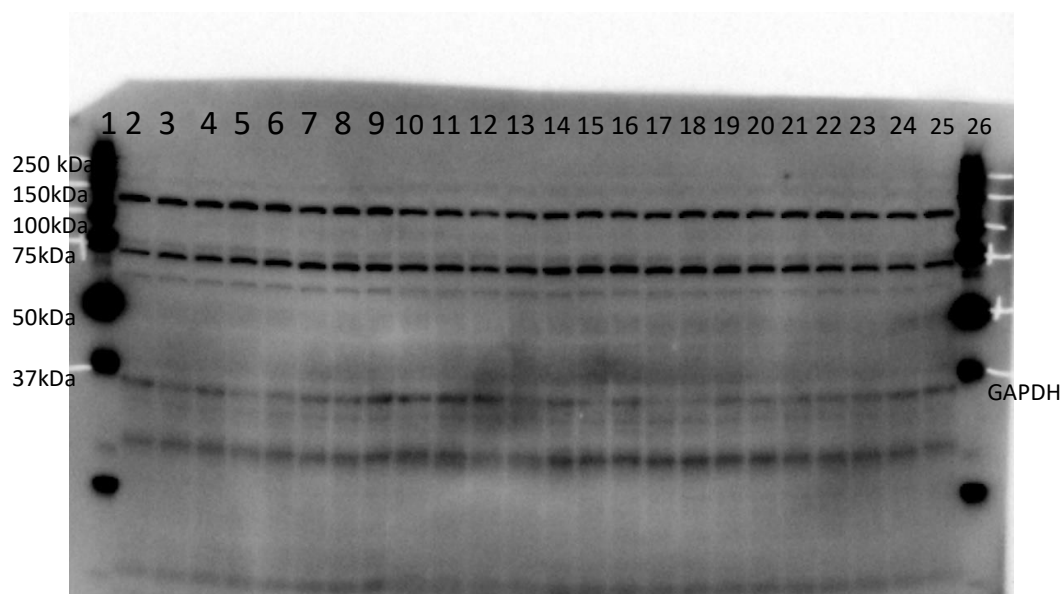


Figure S9 Full unedited gel for Figure pIRS-1(S1101)/IRS-1 and IRS1/pIRS-1(Y632) . **The sequence of application the samples into the gel wells:** 1 lane – Protein standard, 2-5 lane – LFD sample, 6-9 lane – HFD+Sptlc2 sample, 22-25 lane – HFD_{Sptlc2-shRNA} sample, 26 lane – Protein standard, the rest of the lane – other samples (not analyzed).

