

Supplementary Figures

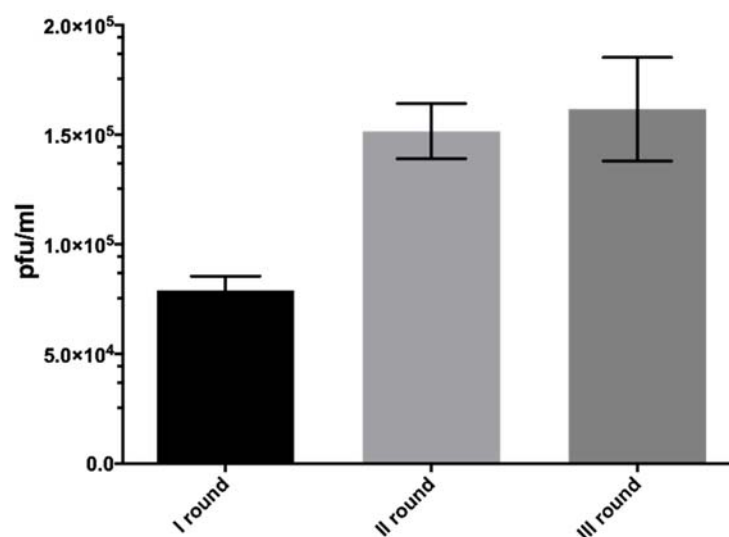


Figure S1. Phage enrichment during EGFR phage-display screening. Titers of eluted phages after each round of biopanning were plotted as pfu/mL. A progressive increase in the colony-forming capacity of EGFR bound clones was observed during first (8×10^4 pfu/mL), second (1.5×10^5 pfu/mL) and third round (1.6×10^5 pfu/mL) of bio panning.

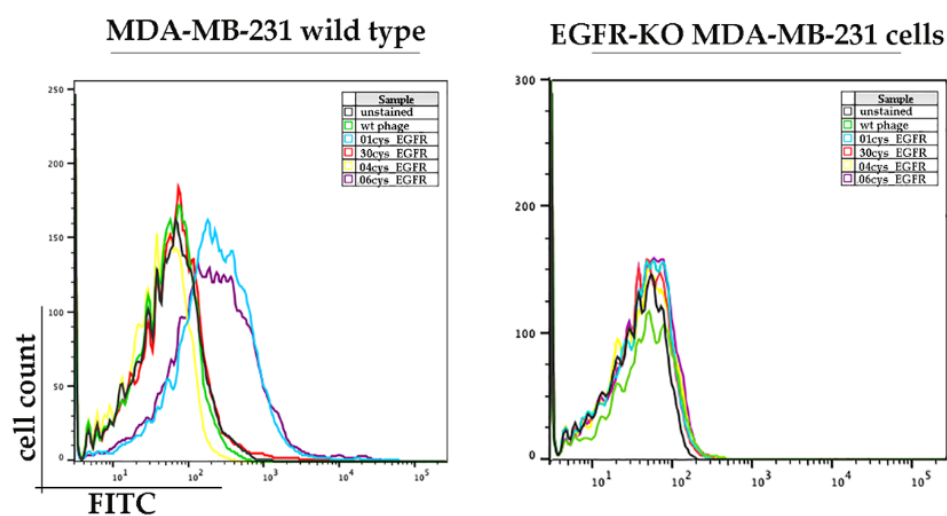


Figure S2. Analysis of phage binding ability to MDA-MB-231 cells using flow cytometry. FACS analysis of binding ability of FITC- conjugate phages 01cysEGFR, 04cys_EGFR, 06cys_EGFR and 30cys_EGFR on wild type MDA-MB-231 cells compared to EGFR KO MDA-MB-231. Wild type M13 phage was used as a negative control.

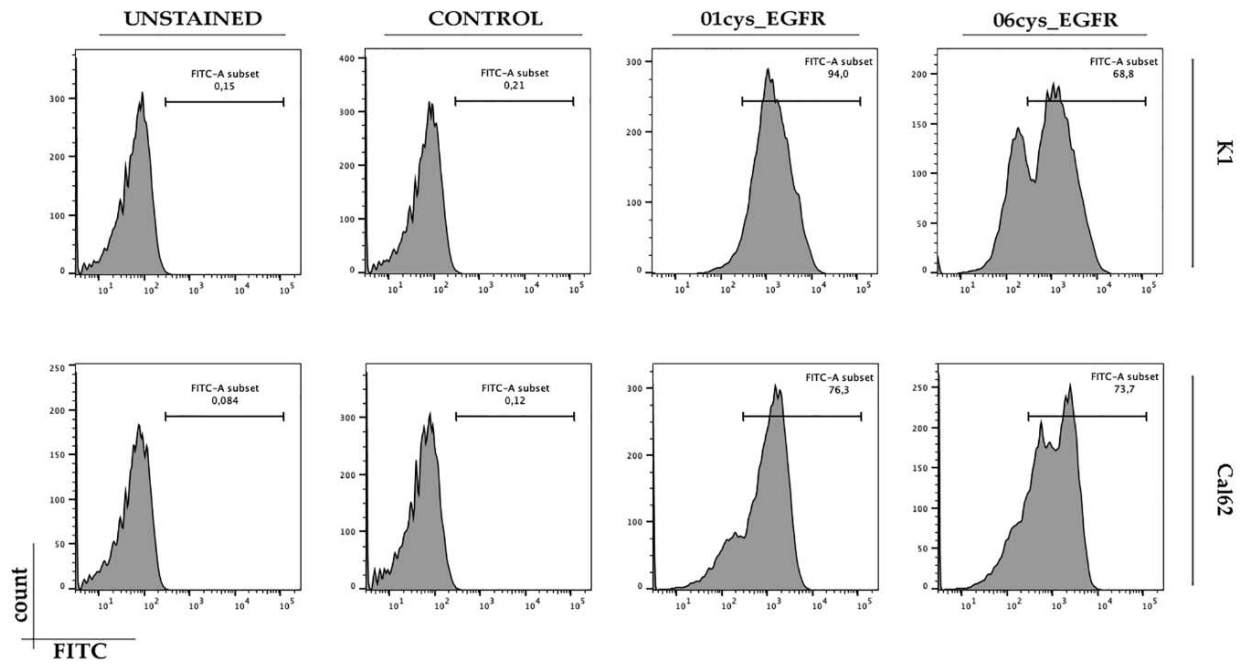


Figure S3. Peptide binding assay in EGFR-positive thyroid cancer cells using flow cytometry. Flow cytometric analysis showing EGFR-overexpressing thyroid cancer cell lines K1 and Cal62 unstained or stained with 10uM of FITC- conjugate peptides (control, 01_cysEGFR and 06cys_EGFR) for 45 min.