

Supplementary

Article

Si–OH Nest and Al Distribution of Silicalite-1 Core/Al-ZSM-5 Shell Zeolites for Methane Dehydroaromatization Reaction

Do-Young Hong ¹, Hyun Su Kim ^{2,3}, Haoxiang Zhang ², Su Kyung Kang ², Elsa Tsegay Tikue ³
and Pyung Soo Lee ^{2,3,*}

¹ Research Center for Nanocatalysts, Korea Research Institute of Chemical Technology (KRICT), 141, Gajeongro, Daejeon 34114, Korea; dyhong@kRICT.re.kr (D.-Y.H.); tsegayelsa22@gmail.com (E.T.T.)

² Department of Chemical Engineering and Material Science, Chung-Ang University, 84, Heukseok-ro, Seoul 06974, Korea; shfkstmzl@naver.com (H.S.K.); hansel931022@gmail.com (H.Z.); love8416509@naver.com (S.K.K.)

³ Department of Intelligent Energy and Industry, Chung-Ang University, 84, Heukseok-ro, Seoul 06974, Korea

* Correspondence: leeps@cau.ac.kr; Tel.: +82-2-820-5939

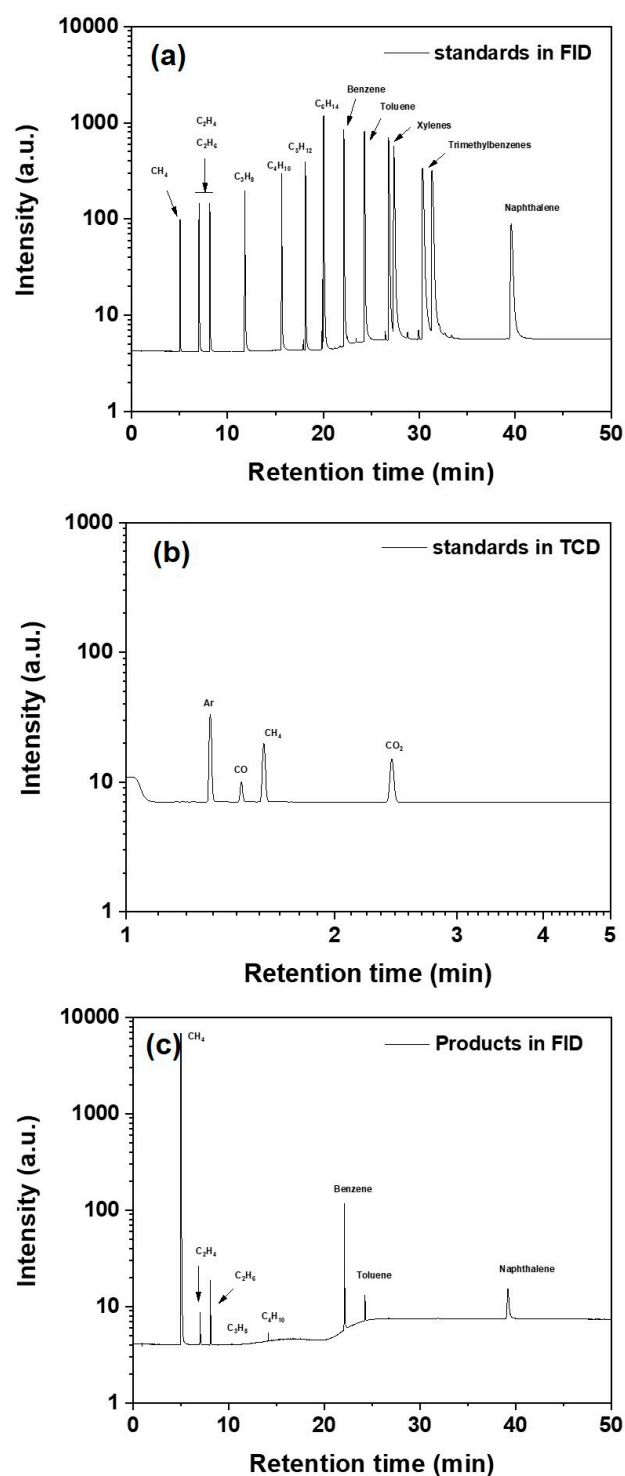


Figure S1. Calibration data of GC using standard gas mixture. GC peaks from stand gas mixture by FID and bu GC peaks, and (c) GC peaks from a reaction product by FID.

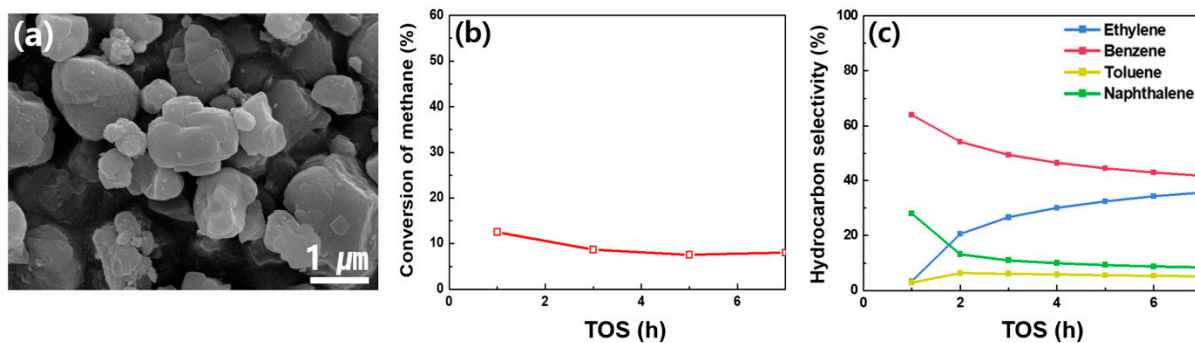


Figure S2. Properties of the commercial zeolite with SAR = 120 (a) SEM image and (b) methane conversion efficiency and (c) hydrocarbon selectivity as the functions of the TOS.