

A supplementary material to:

Unambiguous Identification of Crystal Plasticity Parameters from Spherical Indentation.

by Karol Frydrych and Stefanos Papanikolaou
Submitted on September 2022.

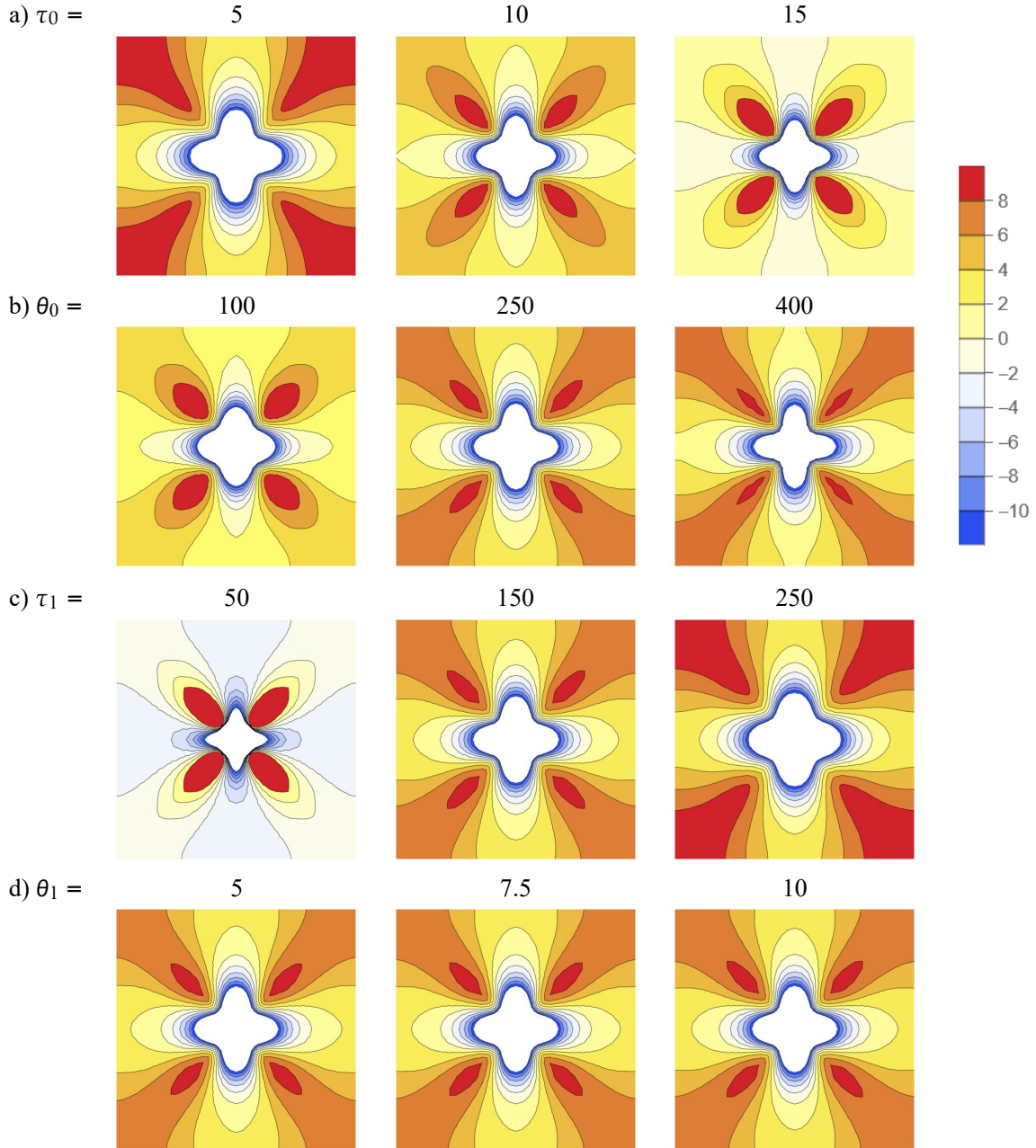


Figure S1: Sensitivity of surface topographies to a) τ_0 , b) θ_0 , c) τ_1 and d) θ_1 (other parameters were kept fixed). Size of the map is $2.4\mu\text{m} \times 2.4\mu\text{m}$. The legend presents the colors related to a vertical displacement value in μm .