

Supplementary Materials

Feasibility of ^{18}F -Fluorocholine PET for Evaluating Skeletal Muscle Atrophy in a Starved Rat Model

Sun Mi Park^{1,†}, Jisu Kim^{2,†}, Suji Baek^{3,†}, Joo-Yeong Jeon⁴, Sang Ju Lee⁵, Seo Young Kang¹, Min Young Yoo⁶, Hai-Jeon Yoon⁶, Seung Hae Kwon⁴, Kiwon Lim², Seung Jun Oh⁵, Bom Sahn Kim^{1,*}, Kang Pa Lee^{1,3,*}, and Byung Seok Moon^{1,*}

¹Department of Nuclear Medicine, College of Medicine, Ewha Womans University Seoul Hospital, Ewha Womans University, Seoul 07804, Korea; psm9728@ewhain.net (S.M.P.); eironn02@gmail.com (S.Y.K.)

²Physical Activity and Performance Institute, Konkuk University, Seoul 05029, Korea; kimpro@konkuk.ac.kr (J.K.); exercise@konkuk.ac.kr (K.L.)

³Research and Development Center, UMUST R&D Corporation, Seoul 01411, Korea; u-service@naver.com

⁴Seoul Center, Korean Basic Science Institute, Seoul 02841, Korea; jjy0183@kbsi.re.kr (J-Y.J.); kwonsh@kbsi.re.kr (S.H.K.)

⁵Department of Nuclear Medicine, College of Medicine, Asan Medical Center, University of Ulsan, Seoul 05505, Korea; atlas425@amc.seoul.kr (S.J.L.); sjoh@amc.seoul.kr (S.J.O.)

⁶Department of Nuclear Medicine, College of Medicine, Ewha Womans University Mokdong Hospital, Ewha Womans University, Seoul 07985, Korea; ckitten@naver.com (M.Y.Y.); haijeon.yoon@gmail.com (H.-J.Y.)

* Correspondence: bsmoon@ewha.ac.kr (B.S.M.); umustrnd@naver.com (K.P.L.); kbomsahn@ewha.ac.kr (B.S.K.).

[†]These authors contributed equally to this work.

Figure S1. The results of mRNA expression levels of MuRF-1 and atrogin-1 using reverse-transcription polymerase chain reaction (n = 3).

Table S1. The results of body weight and muscle weight in each group

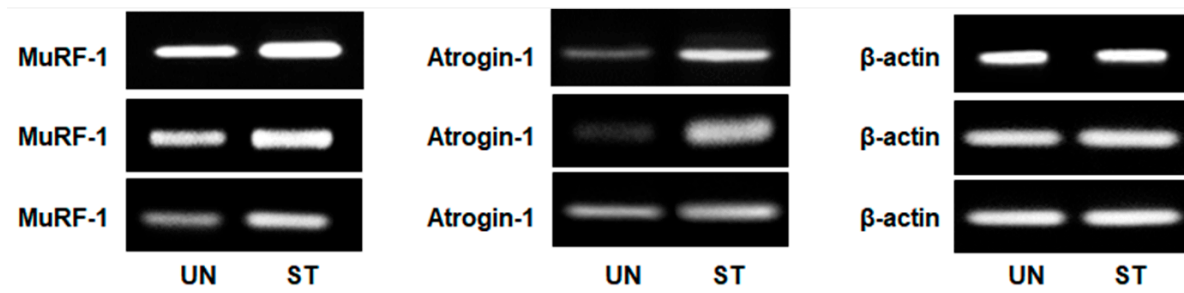


Figure S1. The results of mRNA expression levels of MuRF-1 and atrogin-1 using reverse-transcription polymerase chain reaction (n = 3).

Table S1. The results of body weight and muscle weight in each group

Group	Body weight before experiment (g)	Body weight after treatment (g)	Soleus (mg)	Plantaris (mg)	Gastrocnemius (g)	Total muscle weight (g)
UN	283.3 ± 2.68	298.0 ± 4.66	200.0 ± 5.74	369.5 ± 6.68	1.74 ± 0.60	2.31 ± 0.16
ST	283.3 ± 2.62	234.9 ± 5.64	159.55 ± 7.55	335.8 ± 8.47	1.68 ± 0.95	2.18 ± 0.23

UN: untreated group (n = 6); ST: starvation group (n = 7)