

Supporting Information

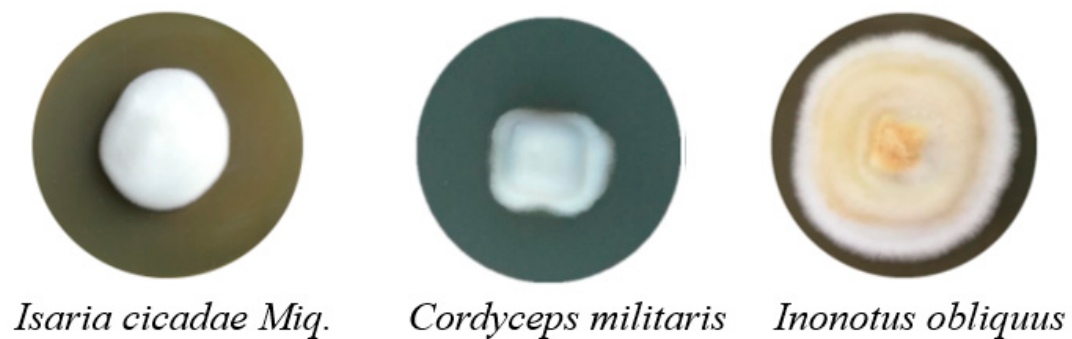


Figure S1. Colony photos of three medicinal fungi (*Isaria cicadae* Miq.;

Cordyceps militaris; *Inonotus obliquus*)

Table S1. The chemical composition of the wheat bran powder

Composition	Content (%)
Starch	18.31±0.09
Protein	14.77±0.30
Fat	2.96±0.03
Water	12.28±0.09
Ash	5.74±0.06
IDF	42.19±0.17
SDF	3.75±0.05

Note: Data are expressed as mean \pm standard deviation. IDF, insoluble dietary fiber; SDF, soluble dietary fiber.

Table S2. The relative molecular weight of soluble dietary fiber (SDF)

Molecular weight	US-SDF(%)	IC-SDF(%)	CM-SDF(%)	IO-SDF(%)
>2×10 ⁶ Da	38.43±0.21 ^c	82.53±0.74 ^a	49.60±0.27 ^b	36.59±0.59 ^d
2×10 ⁵ -2×10 ⁶ Da	37.08±0.30 ^a	13.95±0.44 ^d	30.50±0.39 ^c	31.76±0.23 ^b
1×10 ⁴ -2×10 ⁵ Da	17.73±0.48 ^a	3.52±0.30 ^d	7.15±0.26 ^c	11.35±0.36 ^b
<1×10 ⁴ Da	6.76±0.58 ^c	0.00±0.00 ^d	12.75±0.14 ^b	20.30±0.71 ^a

Note: Data are expressed as mean ± standard deviation. Different lowercase letters indicate significant differences at $p < 0.05$ in terms of microorganisms. US-SDF, unfermented sterilized wheat bran soluble dietary fiber; IC-SDF, *Isaria cicadae* Miq. fermented wheat bran soluble dietary fiber; CM-SDF, *Cordyceps militaris* fermented wheat bran soluble dietary fiber; IO-SDF, *Inonotus obliquus* fermented wheat bran soluble dietary fiber.