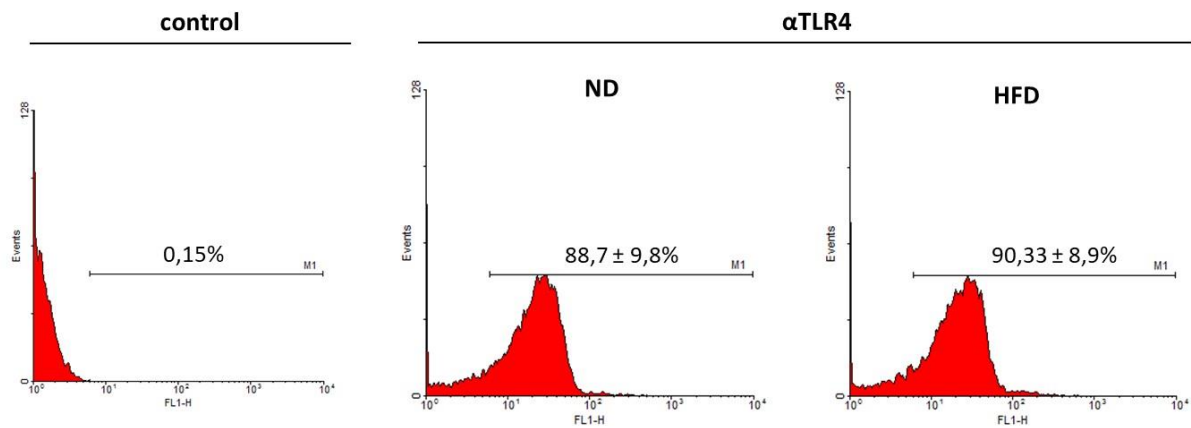


Supplementary Figures



Supplementary Figure S1. Flow cytometric analysis of TLR4 expression on neutrophils. Representative histograms show TLR4 expression on neutrophils of lean (ND) and obese (HFD) mice (right panel). Control cells are shown for lean mice on the left histogram. Following antibodies were used — unconjugated rat anti-mouse TLR4/MD-2 Complex antibody (BD Bioscience), Alexa Fluor® 488 Affini-Pure anti-rat IgG antibody (Jackson ImmunoResearch) (FL-1). Positive cell quantification is given from two repetitions. The number of TLR4+ cells in each group is expressed as a % \pm s.d (n=2).