

ELECTRONIC SUPPLEMENTARY INFORMATION

Curcumin loaded nanocarriers about variable charge augmented with electroporation designed for colon cancer therapy

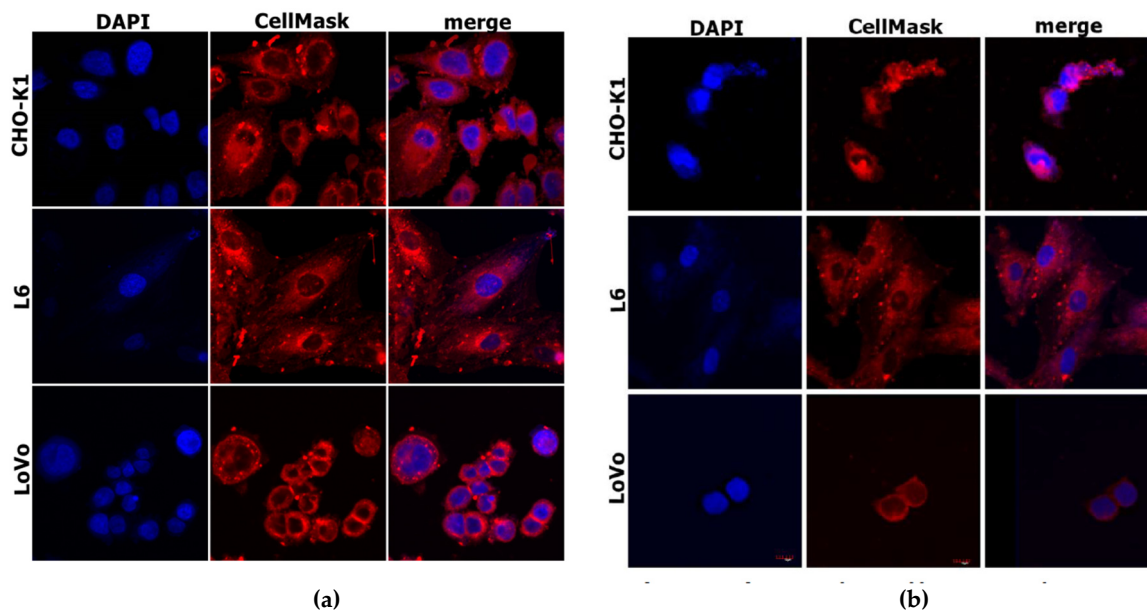


Figure S1 Cells with stained nuclei (DAPI) and cell membrane marker CellMask: (a) control cells; (b) cells electroporated with 1000 V/cm.

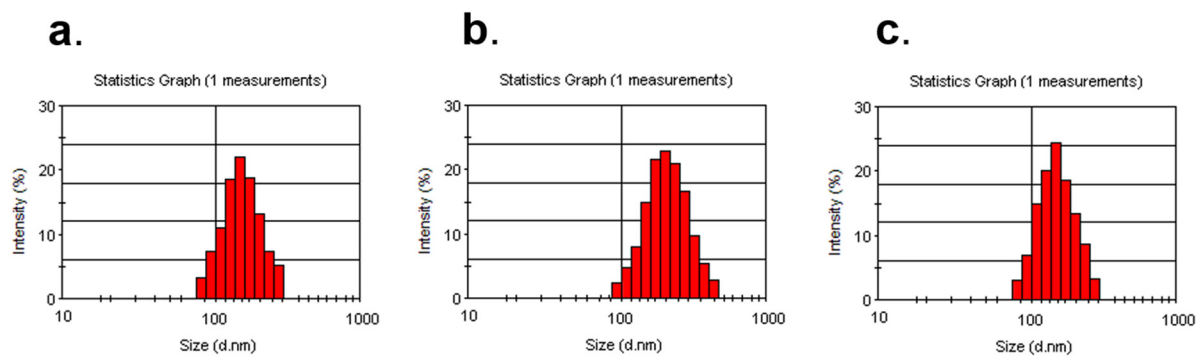


Figure S2. DLS size distribution graphs (by intensity) of CUR-loaded nanocarriers stabilized by $C_{12}(TAPAMS)_2$ (a), $C_{12}(COONa)_2$ (b), and Cremophor EL (c);