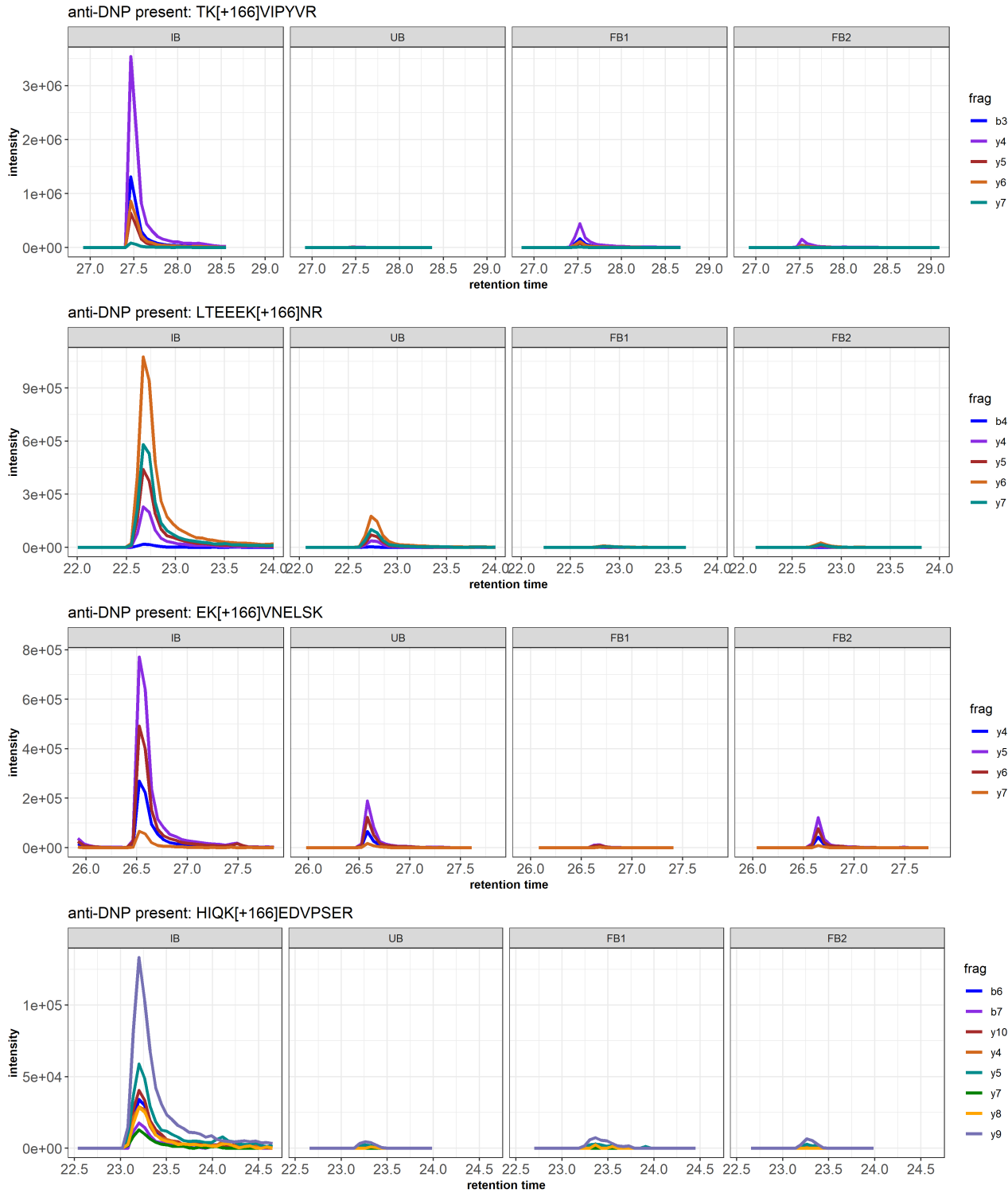


Supplemental Figure S1: LC-MS Peak plots of DNP feasibility experiment

LC-MS chromatograms (PRM) of DNP-labelled (Figures S1A and S2B) and unlabelled (Figures S1C and S1D) peptides from Ab-peptide binding experiment with anti-DNP present (S1A and S1C) or absent (S1B and S1D). Each peptide was measured in 4 fractions: IB = IgG-bound, UB = unbound, FB1 = filter bound 1 fractions, and FB2 = filter bound 2 fraction. Colors in the chromatogram plots indicate the various fragments detected and used for quantification.

Figure S1A: DNP-labelled peptides and anti-DNP present



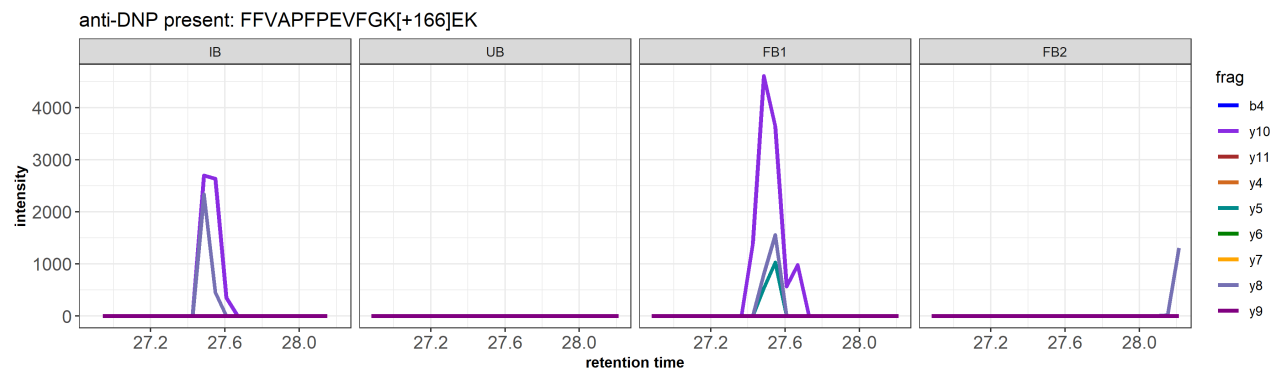
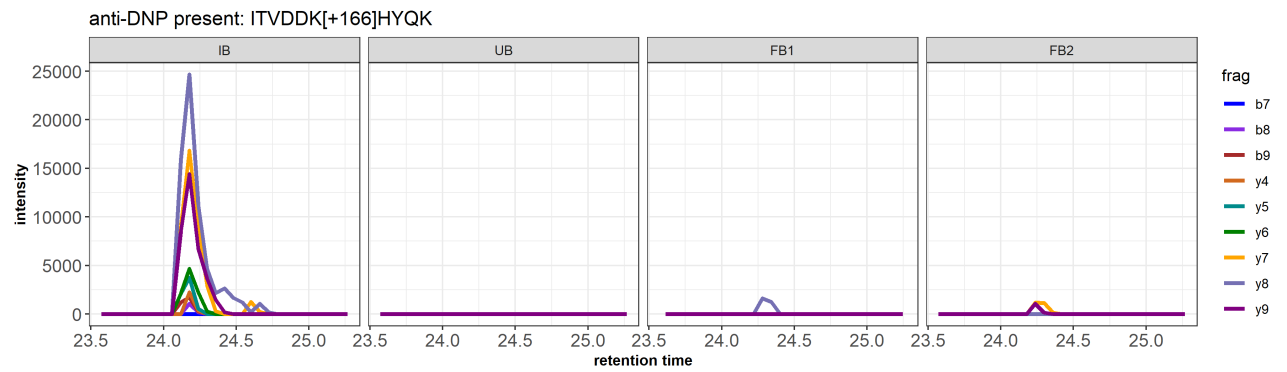
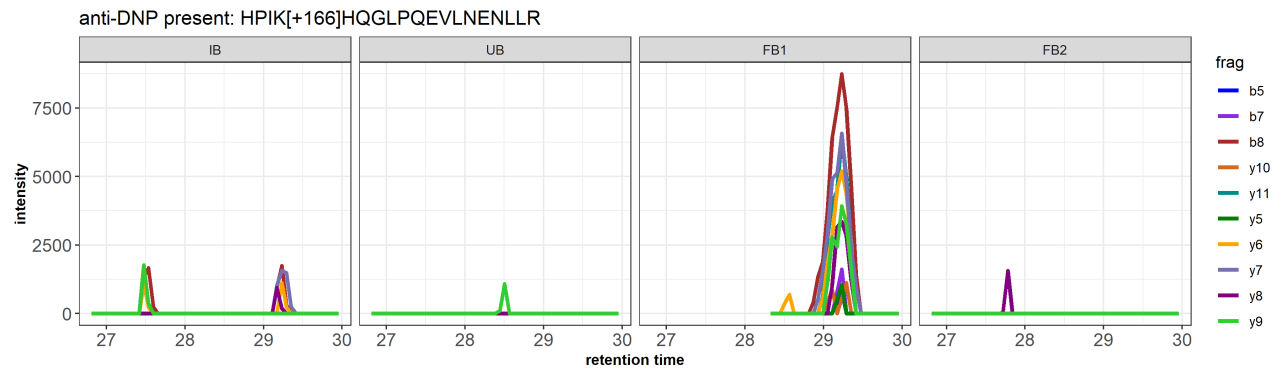
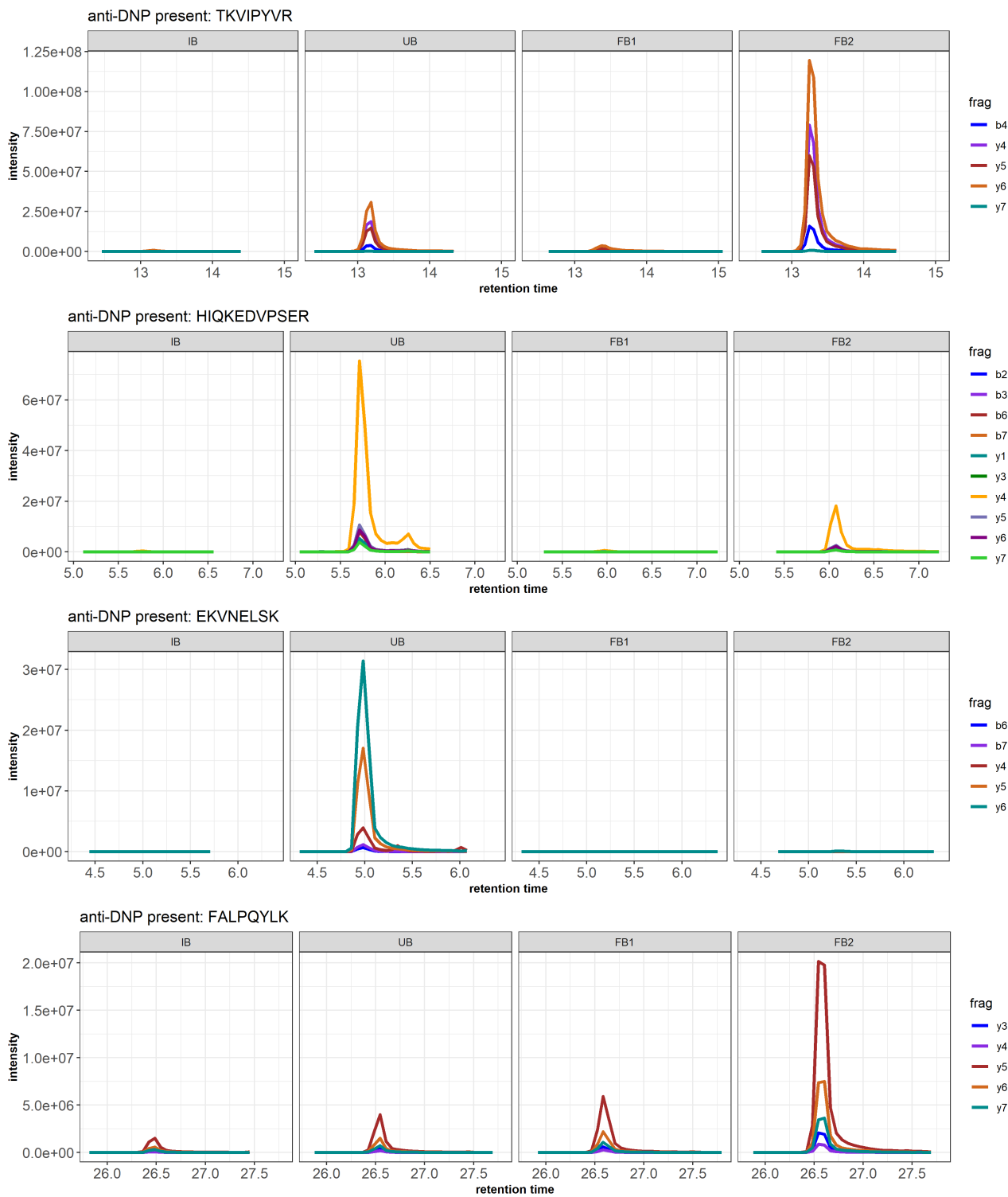
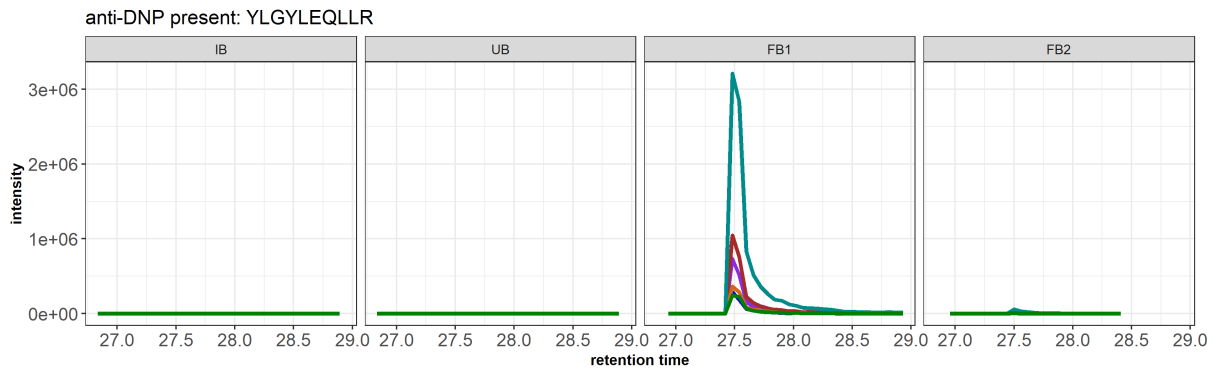
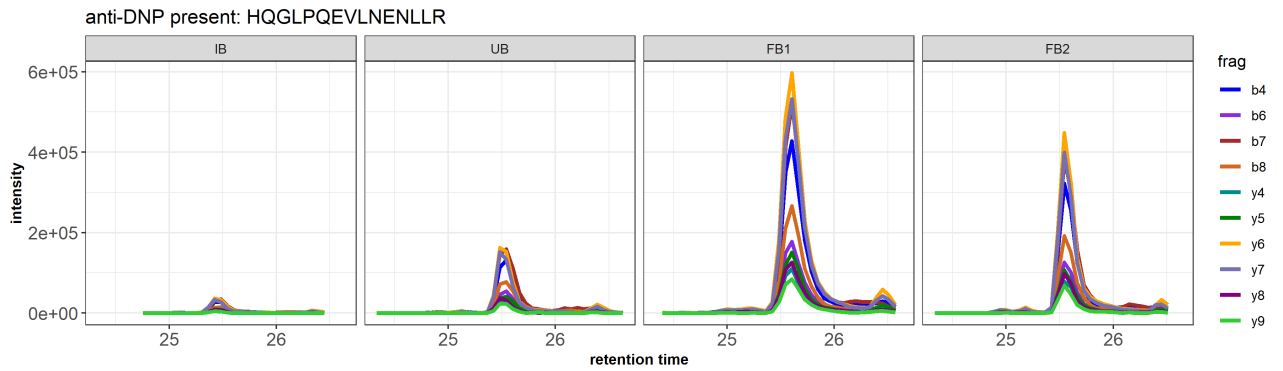
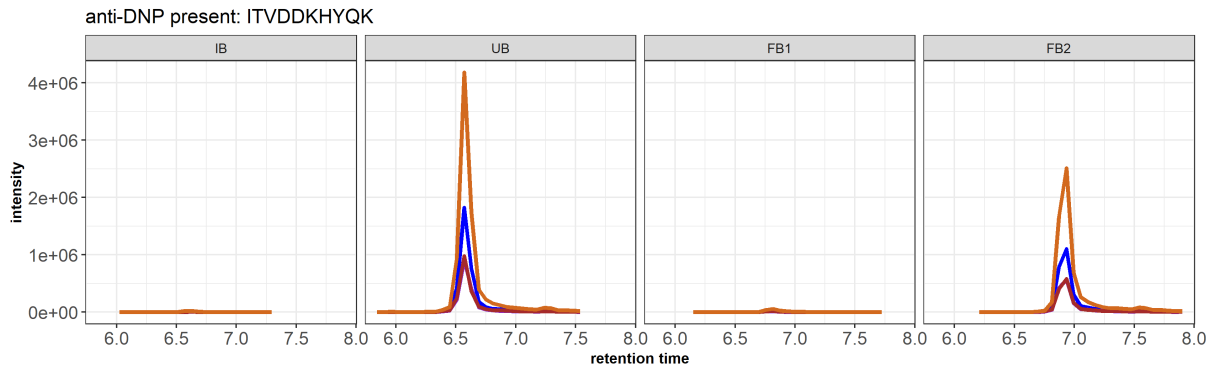
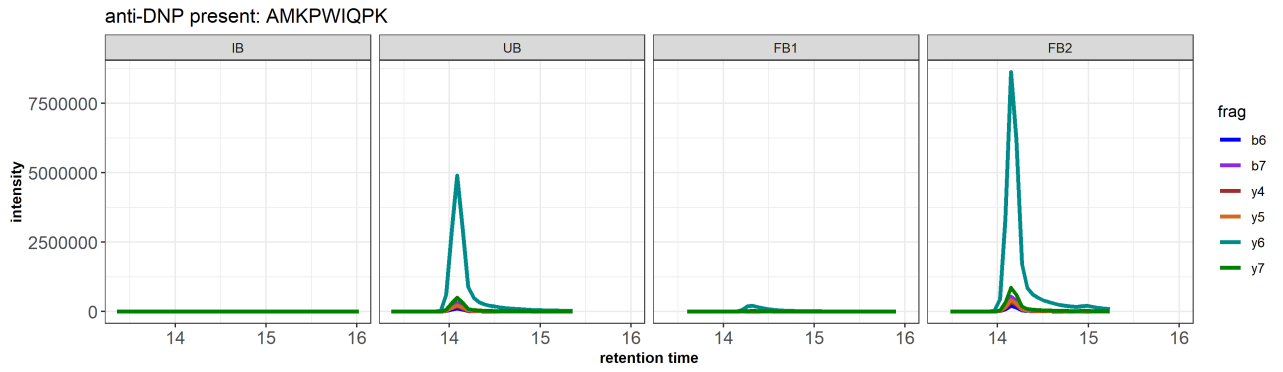


Figure S1B: unlabelled peptides and anti-DNP present





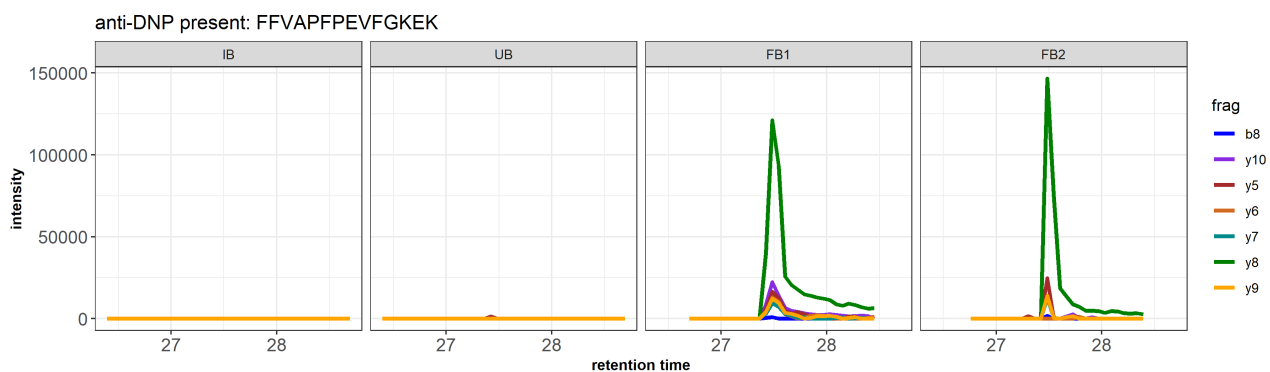
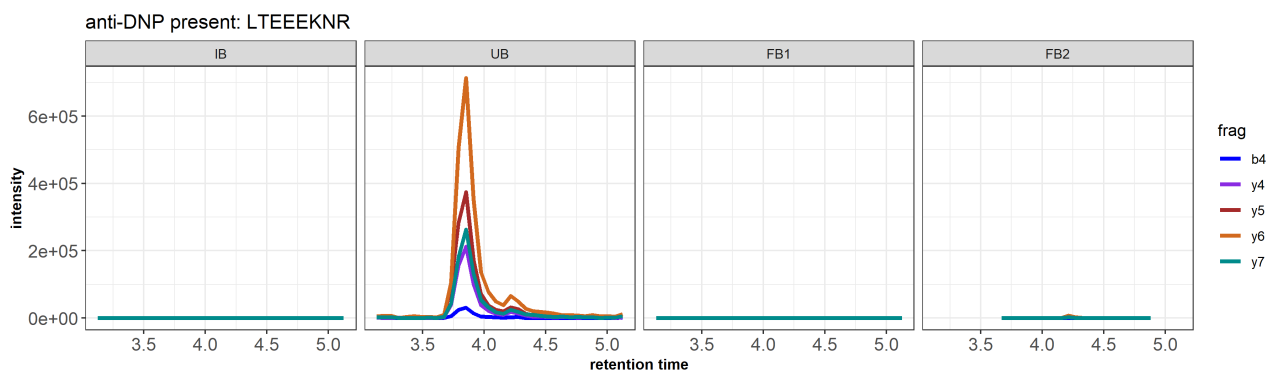
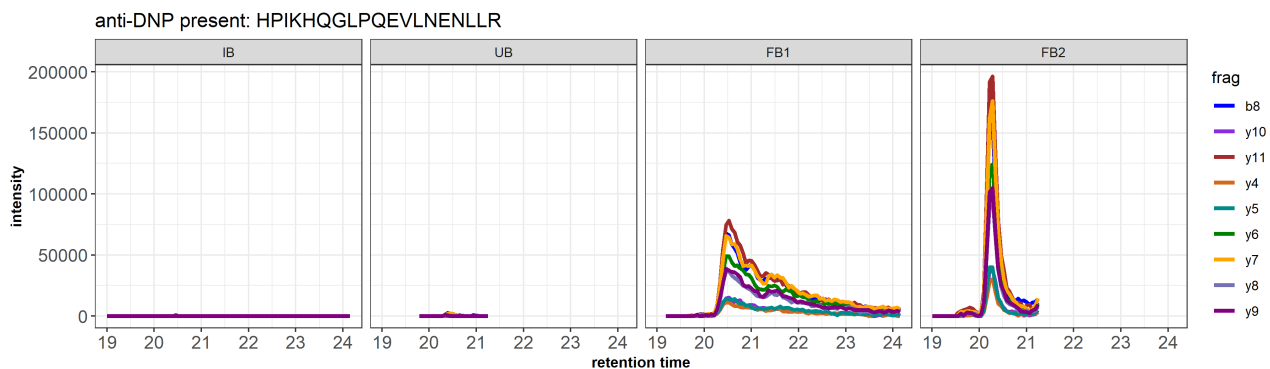
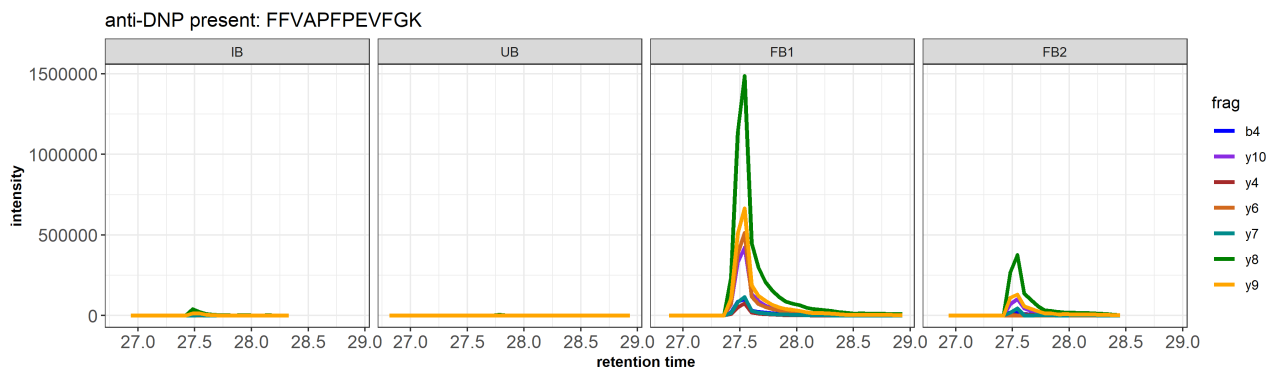
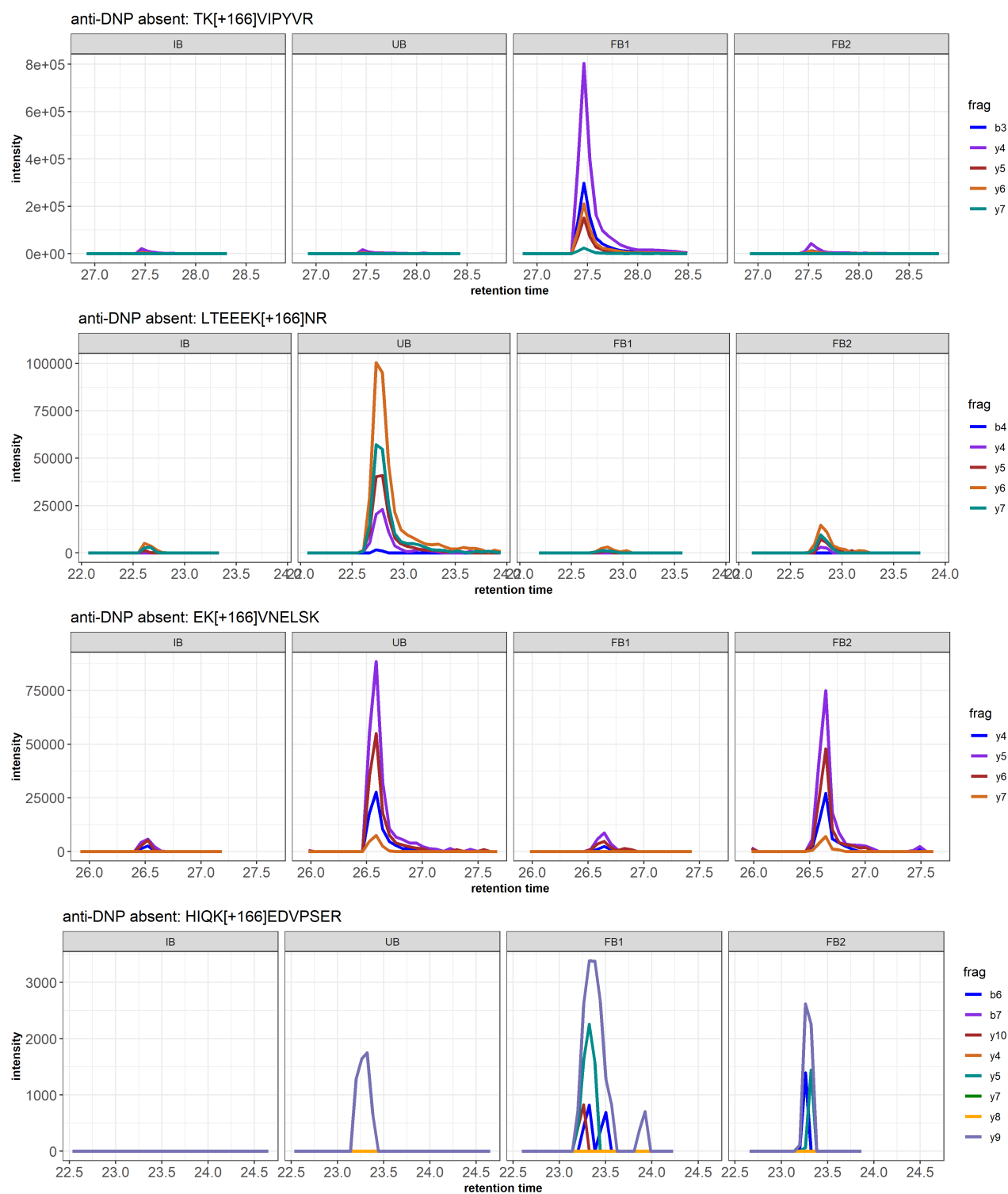


Figure S1C: DNP-labelled peptides and anti-DNP absent



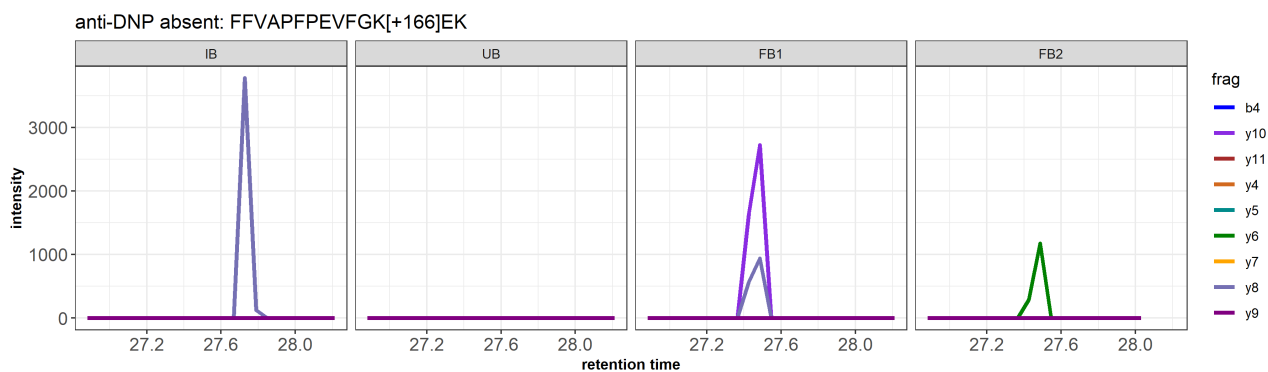
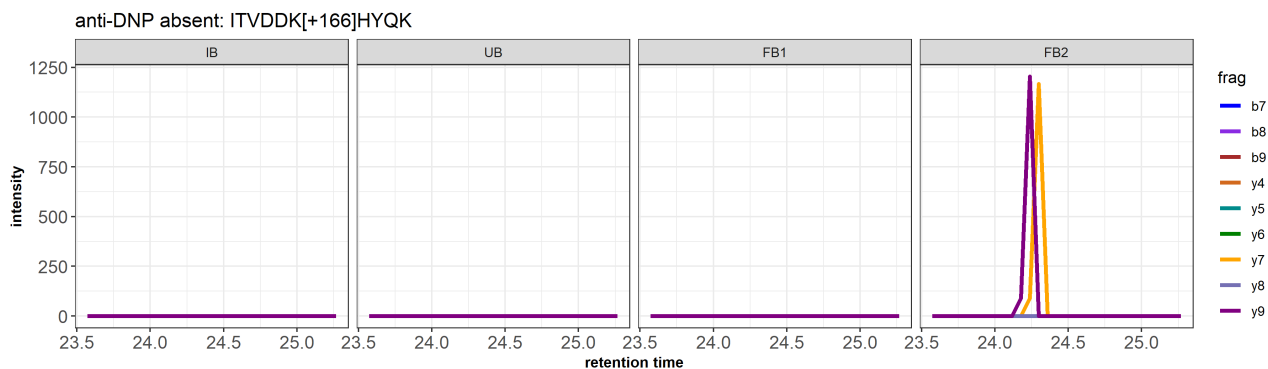
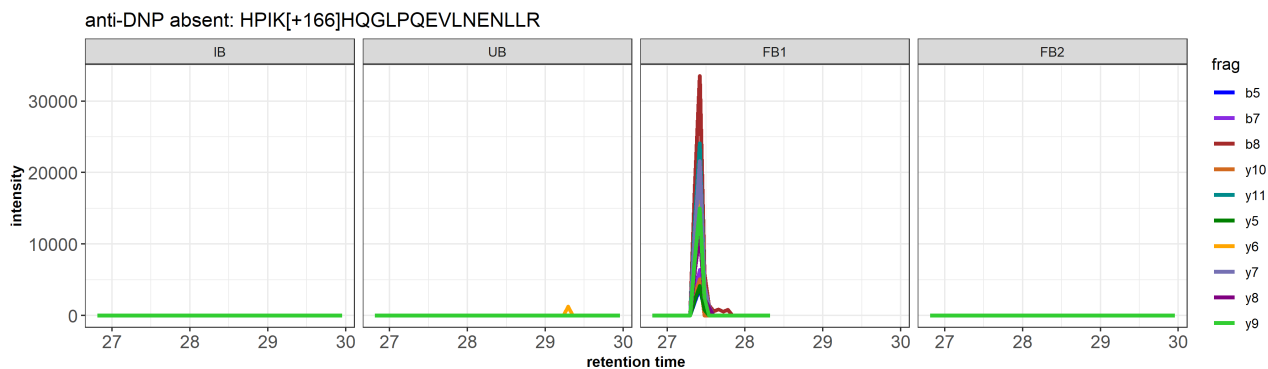
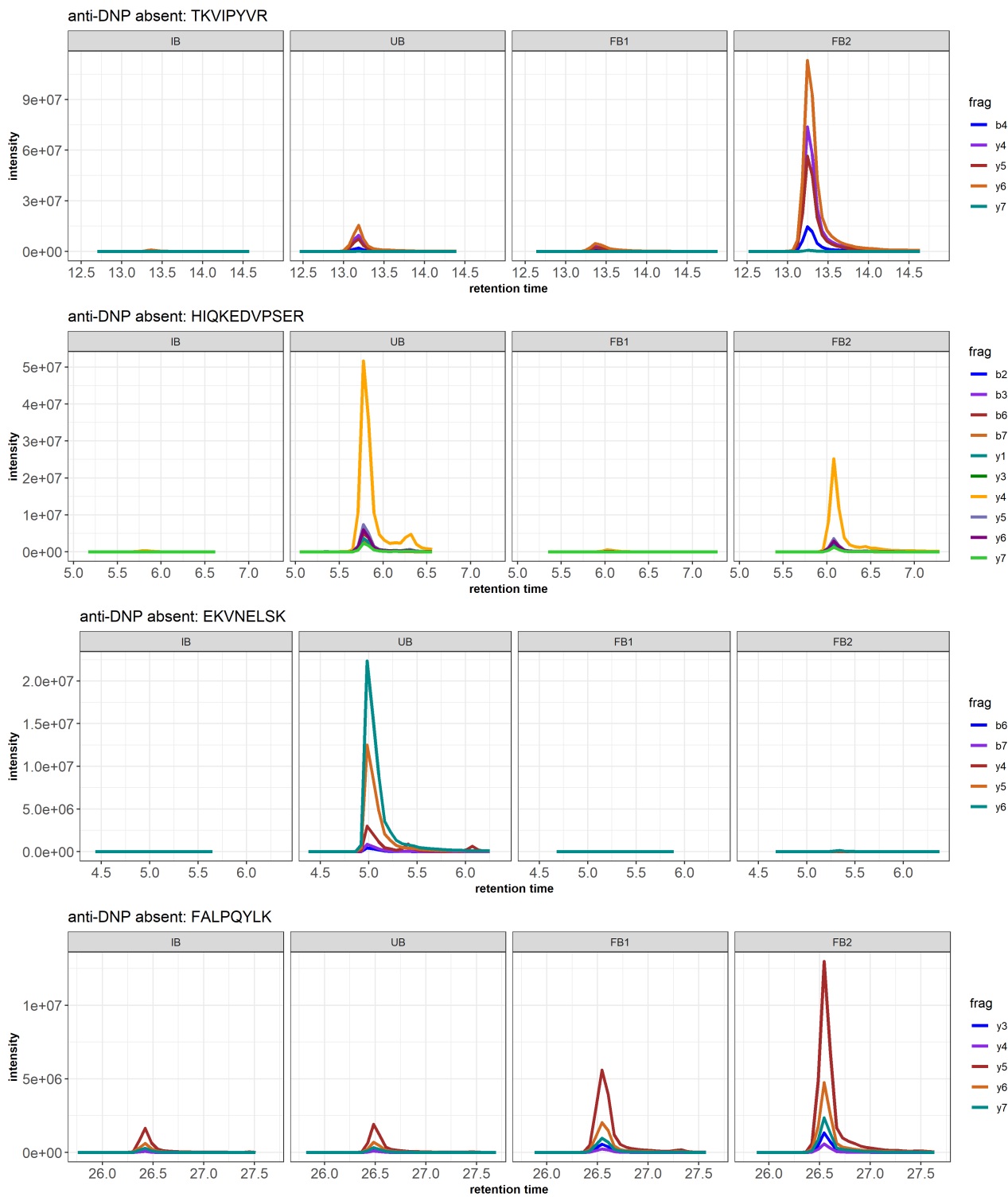
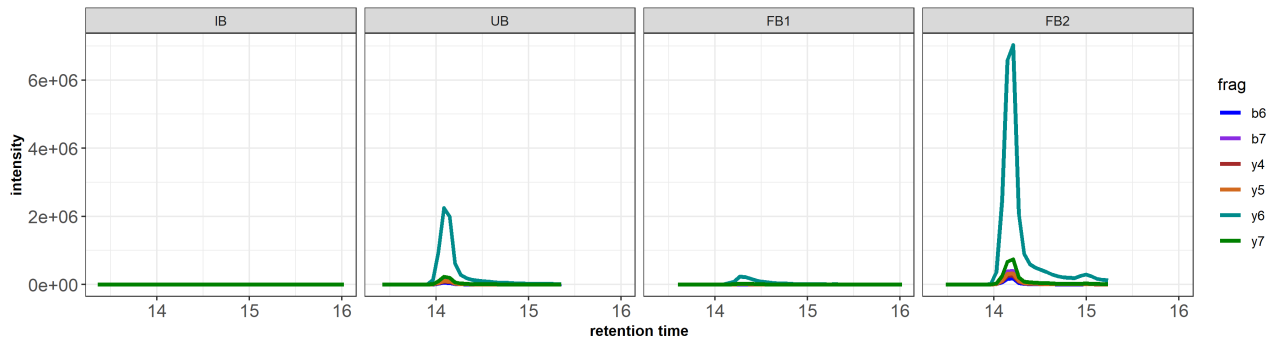


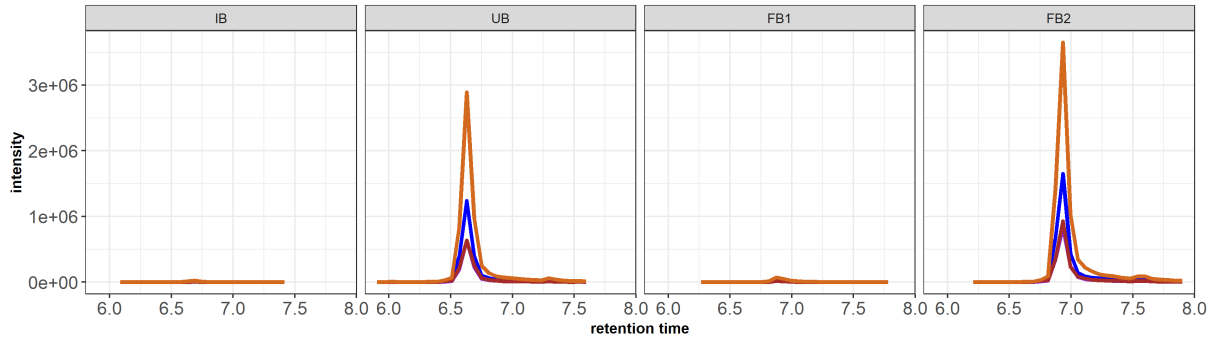
Figure S1D: unlabelled peptides and anti-DNP absent



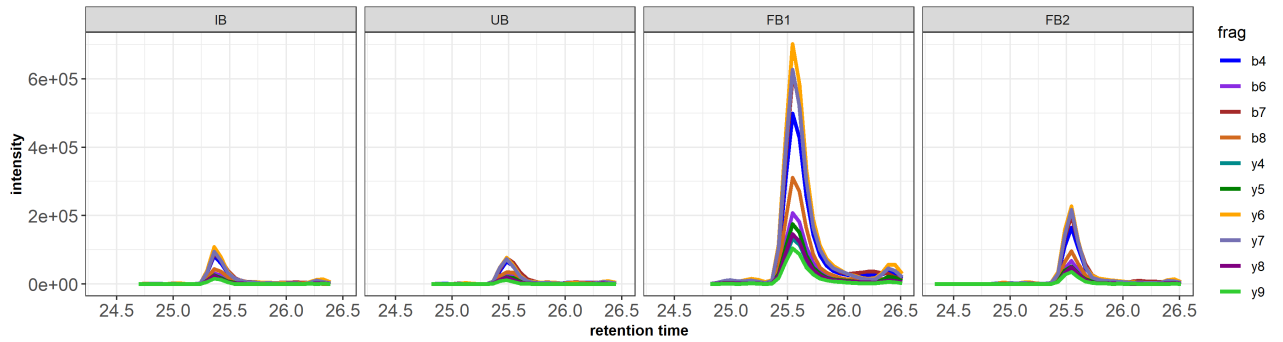
anti-DNP absent: AMKPWIQPK



anti-DNP absent: ITVDDKHYQK



anti-DNP absent: HQGLPQEVLENENLLR



anti-DNP absent: YLGYLEQLLR

