

Oxidative Stress and Nuclear Reprogramming: a Pilot Study of the Effects of Reactive Oxygen Species on Architectural and Epigenetic Landscapes

Claudio Casali ¹, Stella Siciliani ¹, Luca Galgano ² and Marco Biggiogera ^{1,*}

¹ Laboratory of Cell Biology and Neurobiology, Department of Biology and Biotechnology "L. Spallanzani", University of Pavia, 27100 Pavia, Italy

² Laboratory of Biochemistry, Department of Biology and Biotechnology "L. Spallanzani", University of Pavia, 27100 Pavia, Italy

* Correspondence: marco.biggiogera@unipv.it; Tel.: +39-0382-986327

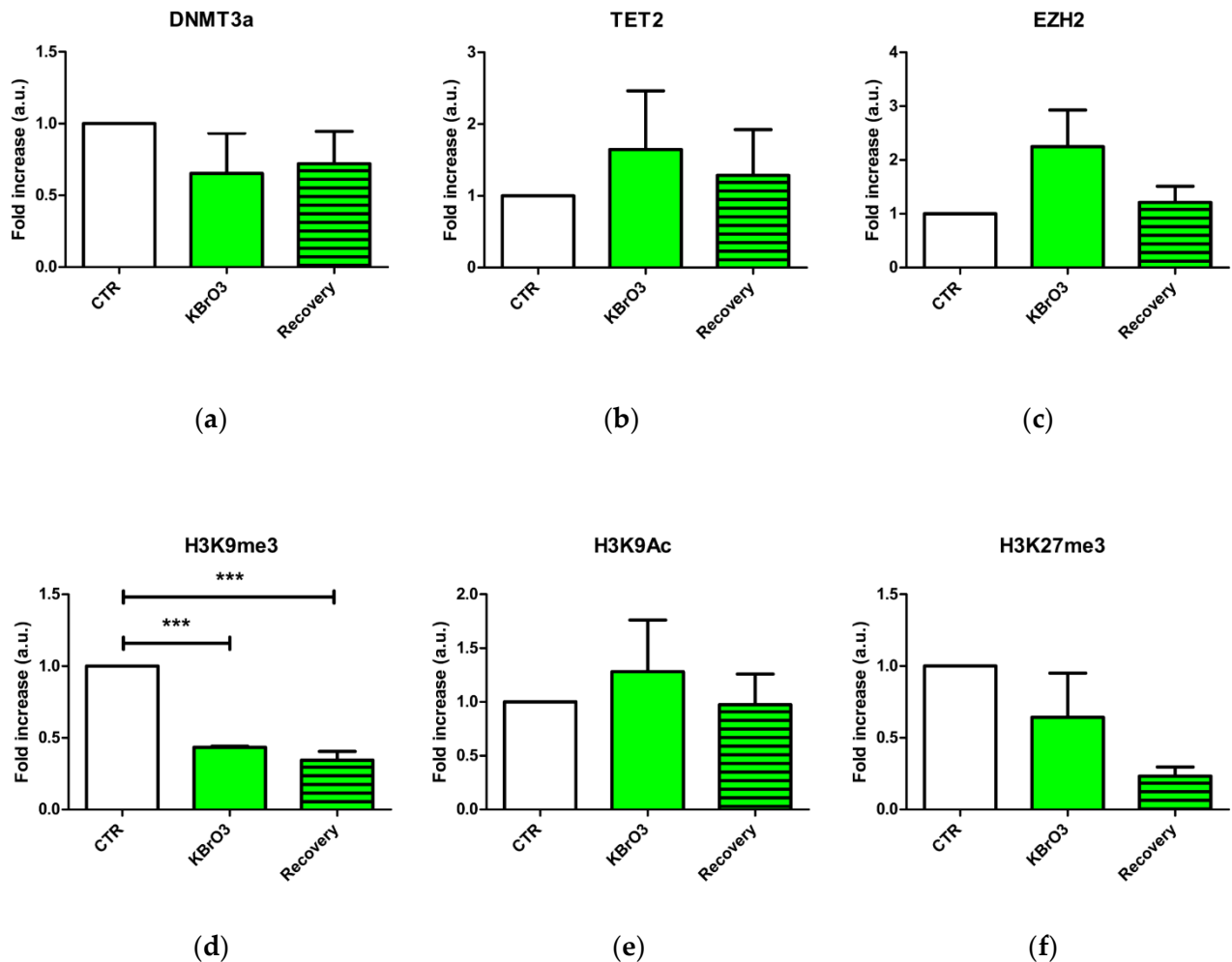


Figure S1. Western blot quantification and statistical analysis. (a) DNMT3a. (b) TET2. (c) EZH2. (d) H3K9Ac. (e) H3K9me3. (f) H3K27me3. Although significance is not always reached, mostly due to isolation of cytoplasmic fractions, these results confirm the same trend already described by means of electron microscopy (***: P value<0,001).

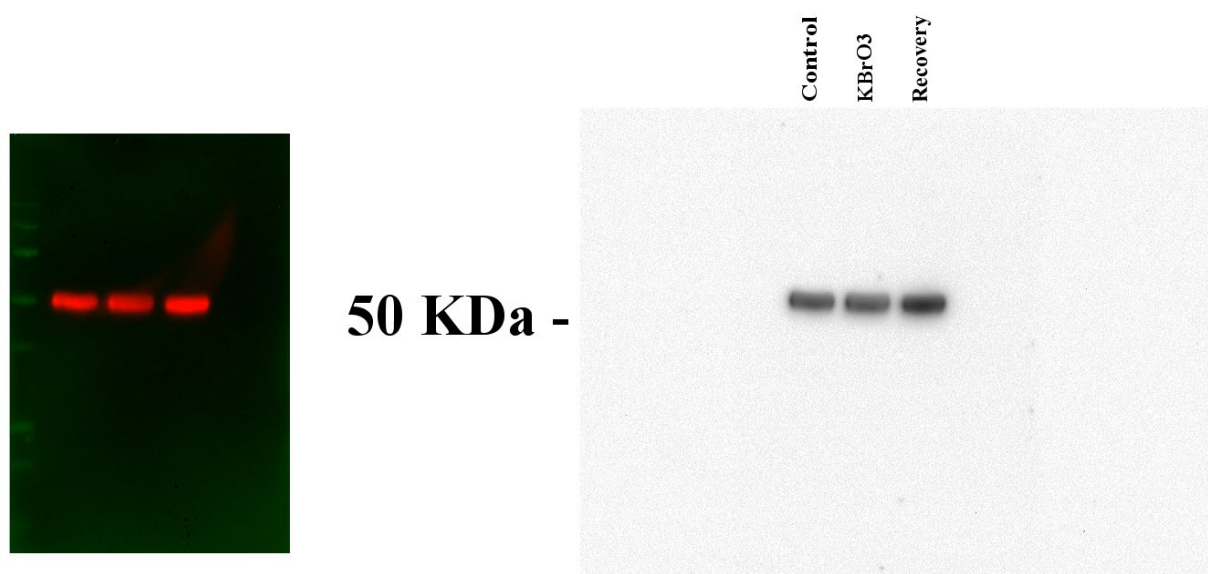


Figure S2. Western blot loading control. Tubulin was assessed as loading control with a molecular weight of 50 KDa as reference.