

Supplement to:

# Practice of Awake Prone Positioning in Critically Ill COVID–19 Patients—Insights from the PRoAcT–COVID Study

Willemke Stilma <sup>1,2,\*,†</sup>, Christel M. A. Valk <sup>1,†</sup>, David M. P. van Meenen <sup>1,3</sup>, Luis Morales <sup>4,5</sup>, Daantje Remmelzwaal <sup>1</sup>, Sheila N. Myatra <sup>6</sup>, Antonio Artigas <sup>7,8</sup>, Ary Serpa Neto <sup>9,10</sup>, Frederique Paulus <sup>1,2</sup> and Marcus J. Schultz <sup>1,11,12,‡,§</sup> on behalf of the PRoAcT–COVID Collaborative Group

<sup>1</sup> Department of Intensive Care, Amsterdam University Medical Centers, Location ‘AMC’,  
1105 AZ Amsterdam, The Netherlands

<sup>2</sup> Center of Expertise Urban Vitality, Faculty of Health, Amsterdam University of Applied Sciences,  
1105 BD Amsterdam, The Netherlands

<sup>3</sup> Department of Anesthesiology, Amsterdam University Medical Centers, Location ‘AMC’,  
1105 AZ Amsterdam, The Netherlands

<sup>4</sup> Servei de Medicina Intensiva, Hospital Universitari Sant Pau, 08025 Barcelona, Spain

<sup>5</sup> Translational Research Laboratory, Institut d’Investigació i Innovació Parc Taulí I3PT, Universitat Autònoma de Barcelona Sabadell, 08208 Barcelona, Spain

<sup>6</sup> Department of Anaesthesiology, Critical Care and Pain, Tata Memorial Hospital, Homi Bhabha National Institute, Mumbai 400012, India

<sup>7</sup> Intensive Care Department, CIBER Enfermedades Respiratorias, Parc Taulí University Hospital,  
08208 Sabadell, Spain

<sup>8</sup> Autonomous University of Barcelona, 08193 Sabadell, Spain

<sup>9</sup> Australian and New Zealand Intensive Care, Research Center (ANZIC-RC), Monash University,  
Melbourne 3800, Australia

<sup>10</sup> Department of Critical Care Medicine, Hospital Israelita Albert Einstein, São Paulo 05652-900, Brazil

<sup>11</sup> Centre for Tropical Medicine and Global Health, Nuffield Department of Medicine, University of Oxford, Oxford OX3 7LG, UK

<sup>12</sup> Mahidol–Oxford Tropical Medicine Research Unit (MORU), Faculty of Tropical Medicine, Mahidol University, Bangkok 10400, Thailand

\* Correspondence: w.stilma@amsterdamumc.nl

† These authors contributed equally to this work.

‡ PRoAcT–COVID, Practice of Adjunctive Therapies in COVID-19 study.

§ Collaborative authors are presented in Appendix A.

Word counts: 311 words (abstract) and 3018 words (body of the text)

Inserts: 2 figures and 4 tables

Appendices: 1 online appendix, with 1 table and 2 figures

**Content:**

Table S1 Baseline characteristics of the matched cohort p. 3

Figure S1 A-D. Unmatched and matched analysis Kaplan Meier curve for ICU and hospital LOS p. 4

Figure S2 A-D. Unmatched and matched analysis Kaplan Meier curve for ICU and hospital mortality p. 5

**Table S1. Baseline characteristics of the matched cohort**

	<b>Overall N = 245</b>	<b>Prone Positioning N = 70</b>	<b>Standard Care N = 175</b>	<b>P</b>
Age, years (median [IQR])	66 [59 – 73]	66 [60 – 74]	66 [59 – 73]	0.726
Male gender, N (%)	172 (70.2)	45 (64.3)	127 (72.6)	0.260
BMI, kg/m <sup>2</sup> (median [IQR])	28.4 [25.4 – 32.3]	29.3 [26.0 – 32.2]	27.8 [25.3 – 32.4]	0.348
SAPS II score (median [IQR])	44 [33 – 54]	46 [36 – 54]	44 [32 – 54]	0.558
Do-not-intubate order, N (%)	6 (2.4)	0 (0.0)	6 (3.4)	0.267
Comorbidities				0.463
Arterial hypertension, N (%)	97 (39.6)	30 (42.9)	67 (38.3)	0.606
Cardiovascular disease, N (%)	60 (24.5)	10 (14.3)	50 (28.6)	0.029
Heart failure, N (%)	11 (4.5)	2 (2.9)	9 (5.1)	0.661
COPD or asthma, N (%)	43 (17.6)	12 (17.1)	31 (17.7)	1.000
Diabetes mellitus, N (%)	70 (28.6)	16 (22.9)	54 (30.9)	0.273
Chronic kidney disease, N (%)	21 (8.6)	5 (7.1)	16 (9.1)	0.801
Malignancy, N (%)	14 (5.7)	3 (4.3)	11 (6.3)	0.761
Neuromuscular disease, N (%)	7 (2.9)	2 (2.9)	5 (2.9)	1.000
Obstructive sleep apnea, N (%)	16 (6.5)	4 (5.7)	12 (6.9)	0.967

Abbreviations: BMI, Body Mass Index; COPD, Chronic obstructive pulmonary disease; SAPS, Simplified Acute Physiology Score.

Figure S1 A-D. Unmatched and matched analysis Kaplan Meier curve for ICU and hospital LOS

A: ICU discharge unmatched, B: Hospital discharge unmatched, C: ICU discharge matched, D: Hospital discharge matched

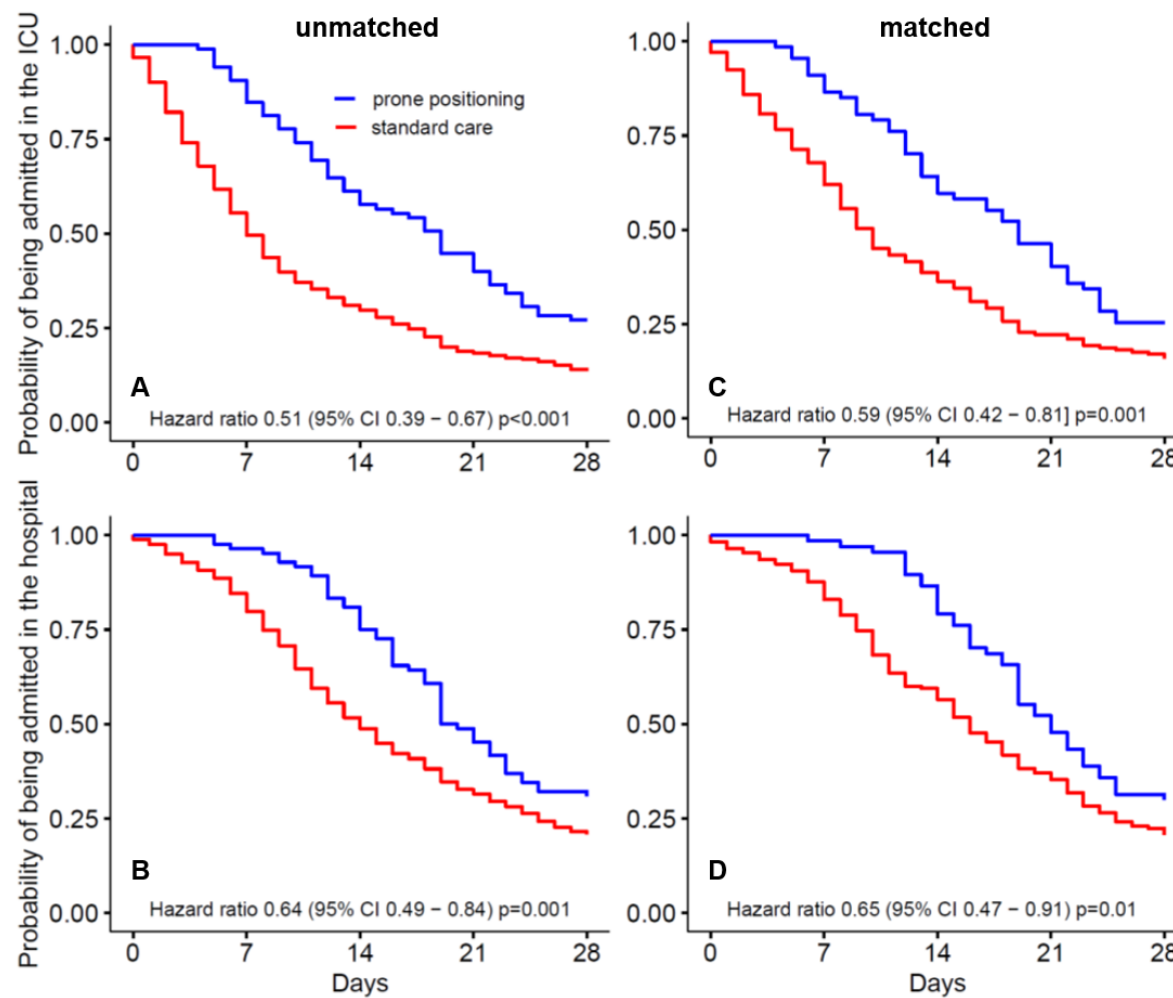


Figure S2 A-D. Unmatched and matched analysis Kaplan Meier curve for ICU and hospital mortality

A: ICU mortality unmatched, B: Hospital mortality unmatched, C: ICU mortality Matched, D: Hospital mortality Matched

