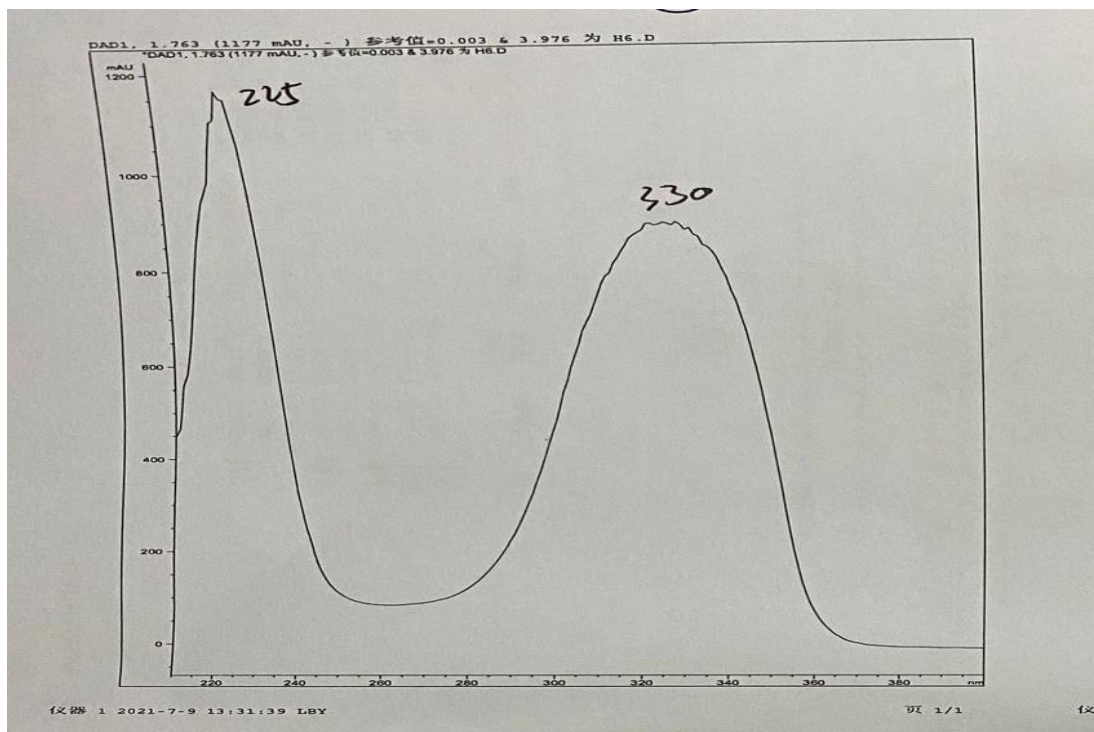
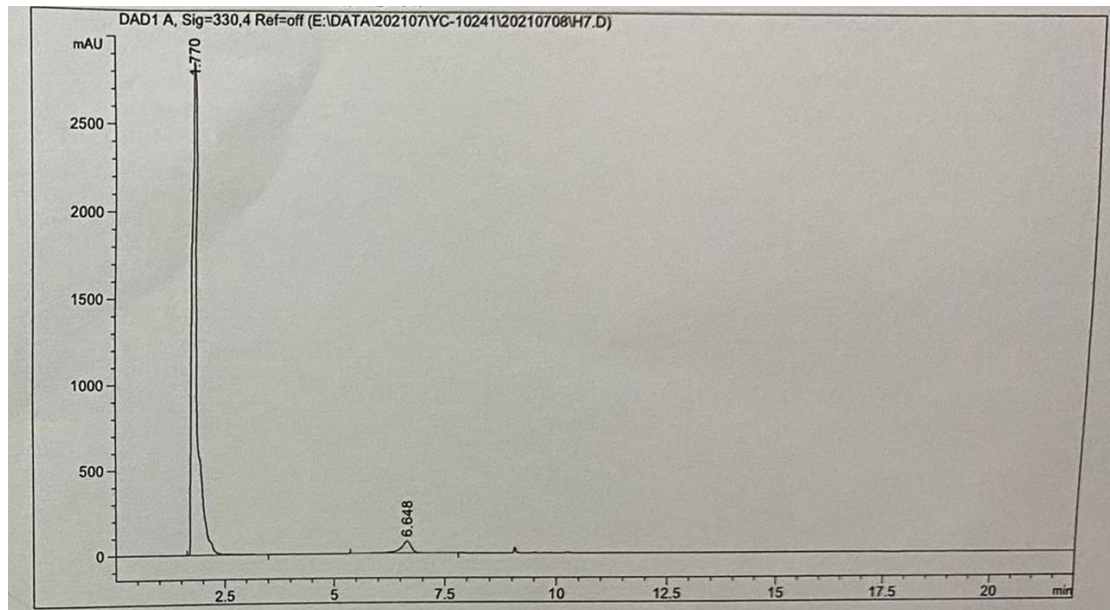
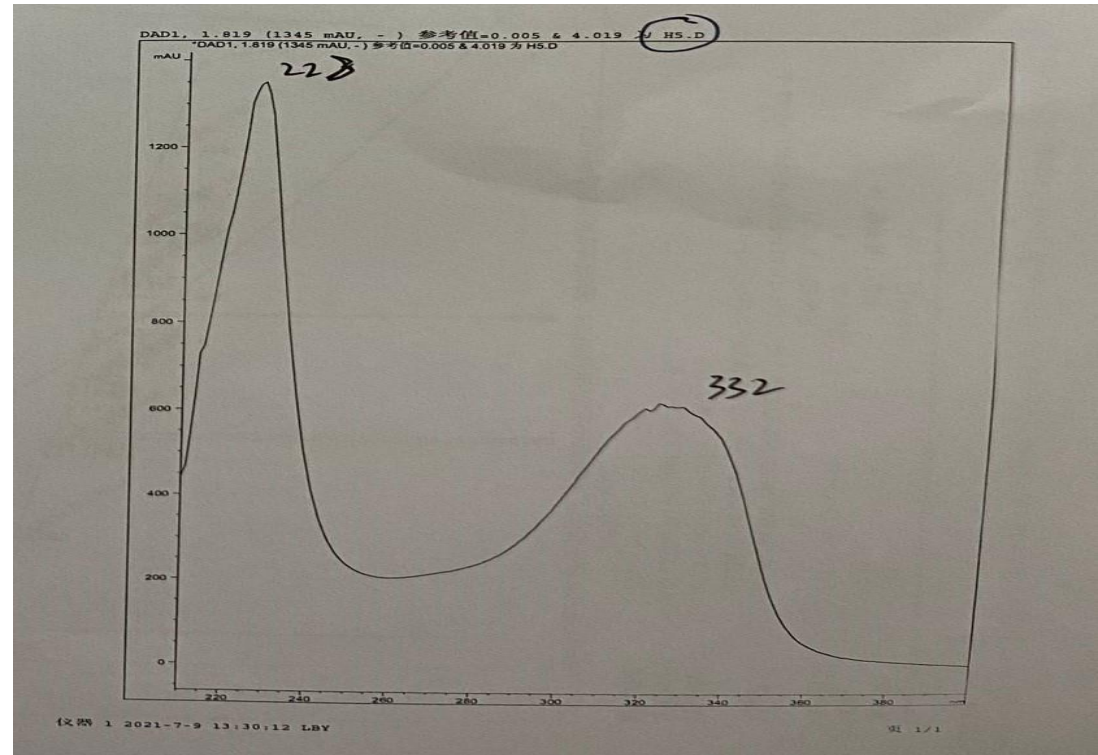
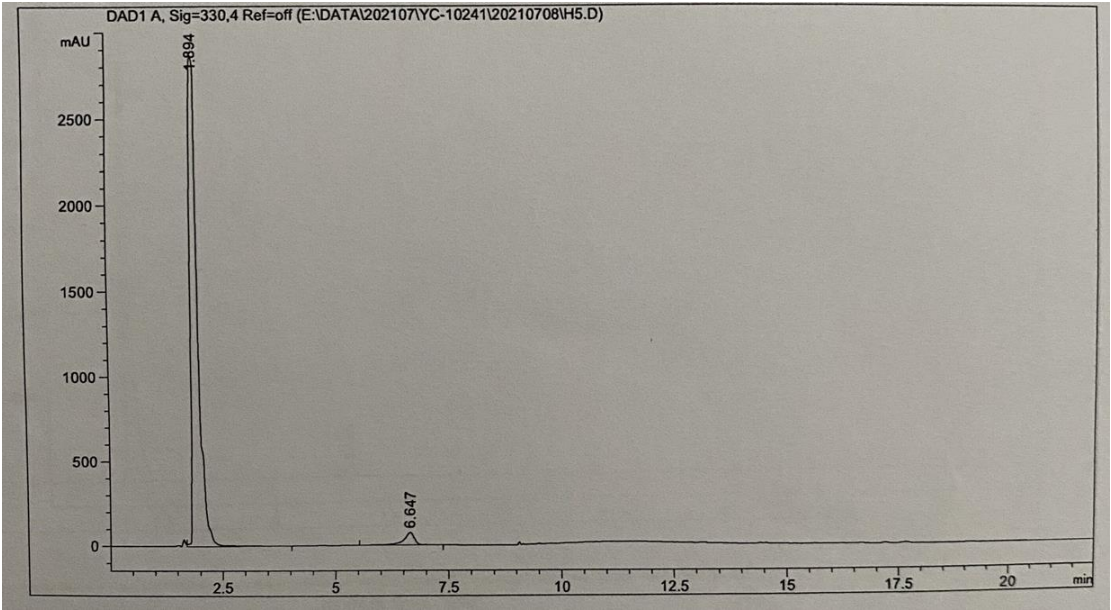


Figure S1: HPLC spectrum

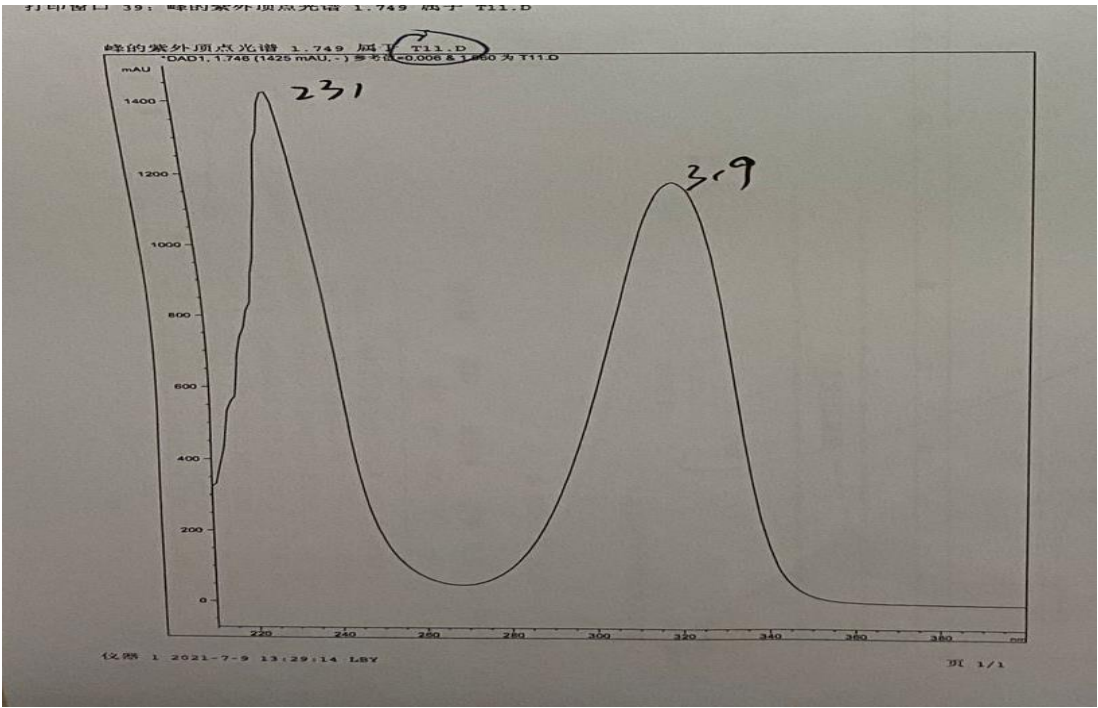
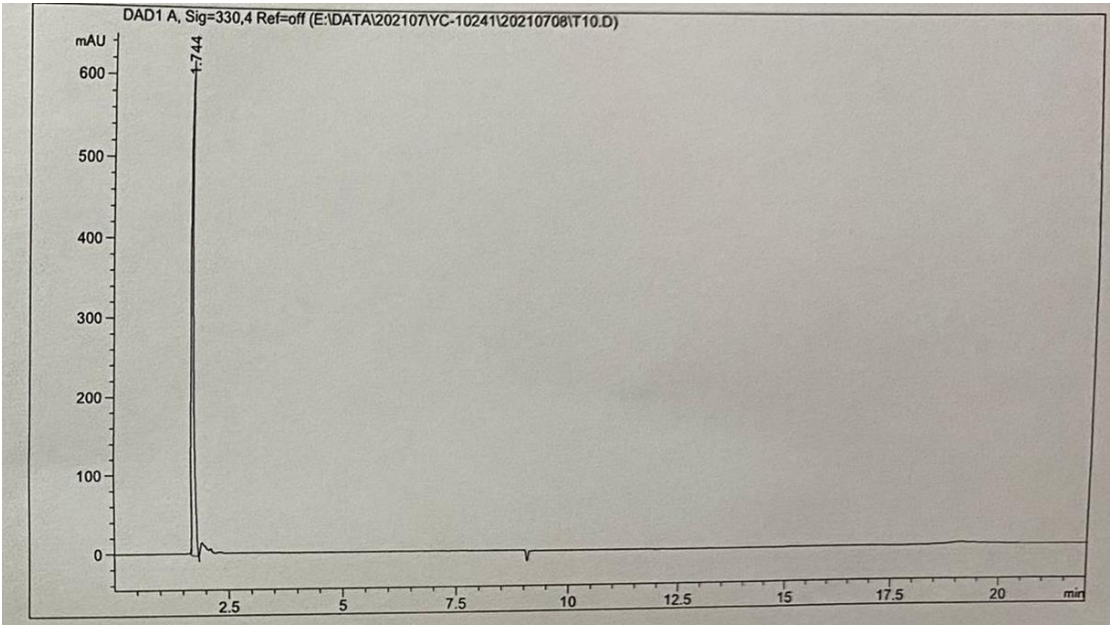
The following is HPLC spectra of the fraction T₁ which isolated from MAAs extracts from *Bangia fusco-purpurea*



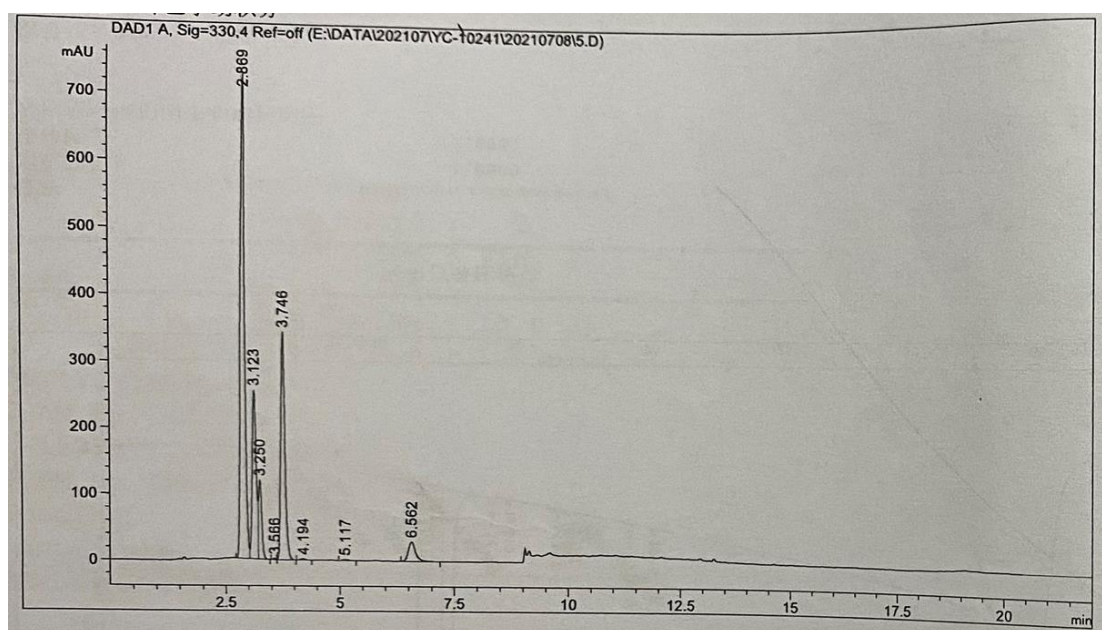
The following is HPLC spectra of the fraction J₁ which isolated from MAAs extracts from *Gracilaria* sp.



The following is HPLC spectra of the fraction J₂ which isolated from MAAs extracts from *Gracilaria* sp.



The following is HPLC spectra of MAAs extracts from *Gelidium amansii*



The following is HPLC spectra of MAAs extracts from *Gracilaria confervoides*

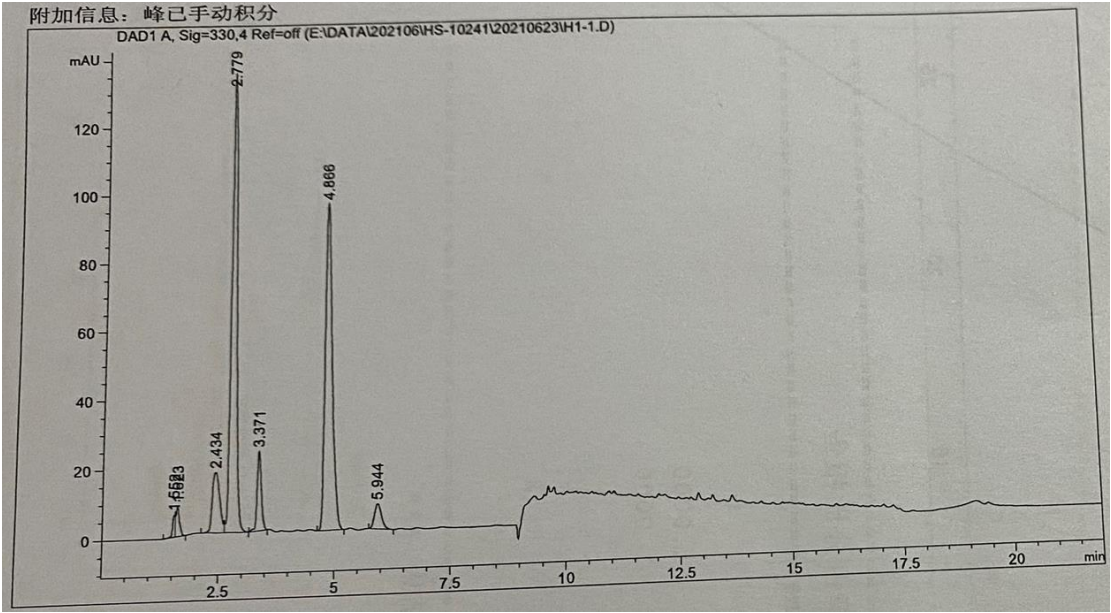
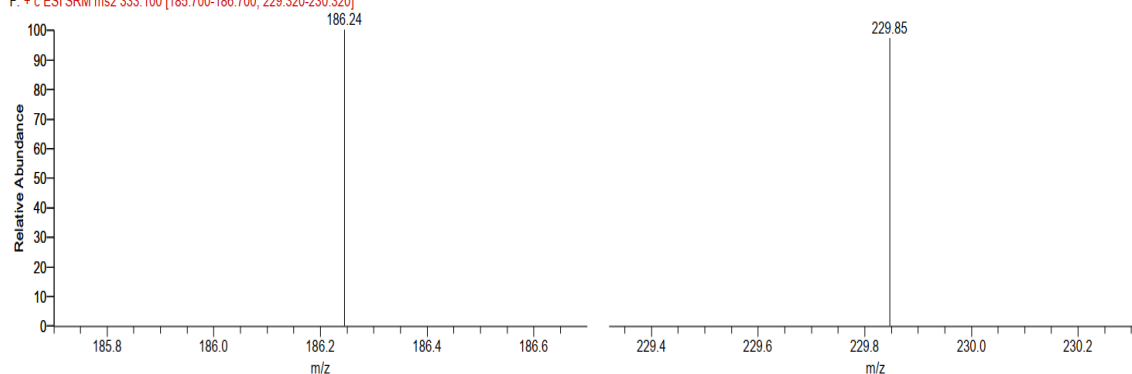


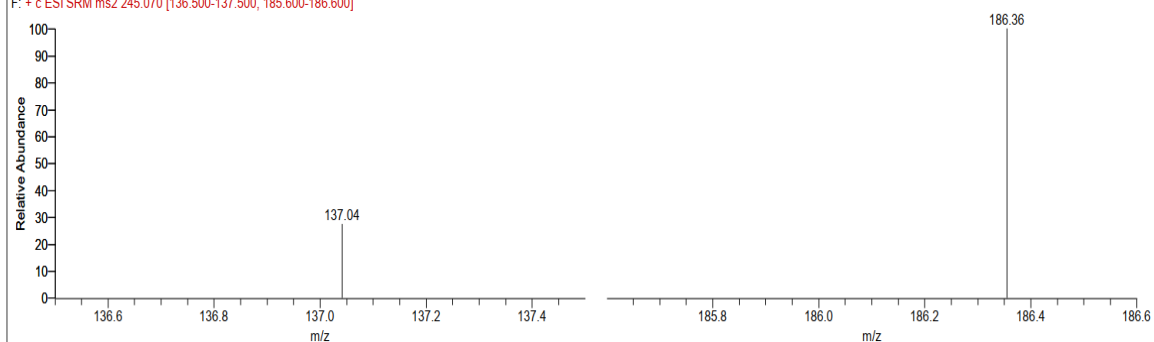
Figure S2: ESI-MS spectrum

The following is tandem mass spectra of one fraction (T₁) which isolated from MAAs extracts from *Bangia fusco-purpurea*

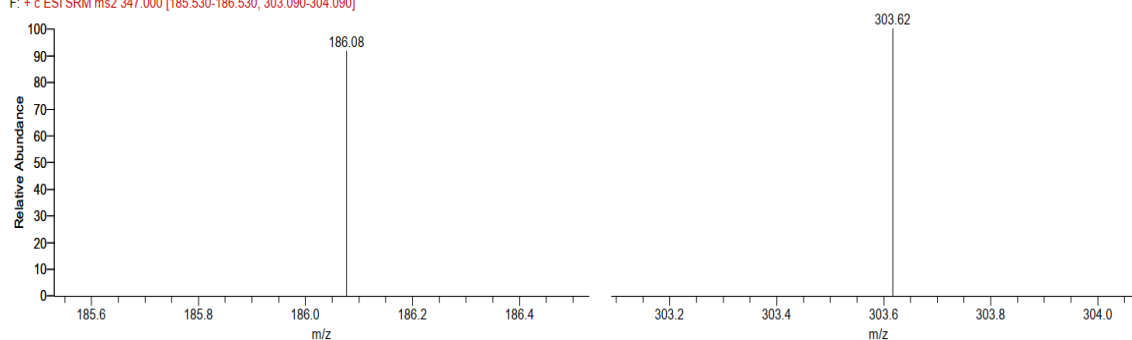
F: + c ESI SRM ms2 333.100 [185.700-186.700, 229.320-230.320]



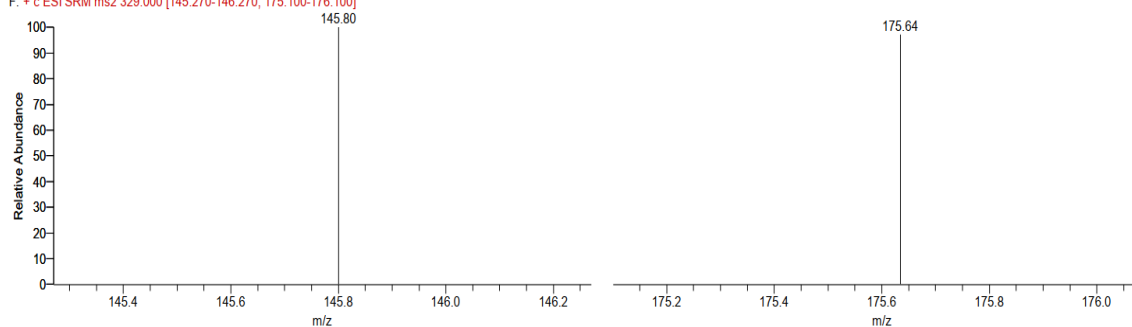
F: + c ESI SRM ms2 245.070 [136.500-137.500, 185.600-186.600]



F: + c ESI SRM ms2 347.000 [185.530-186.530, 303.090-304.090]

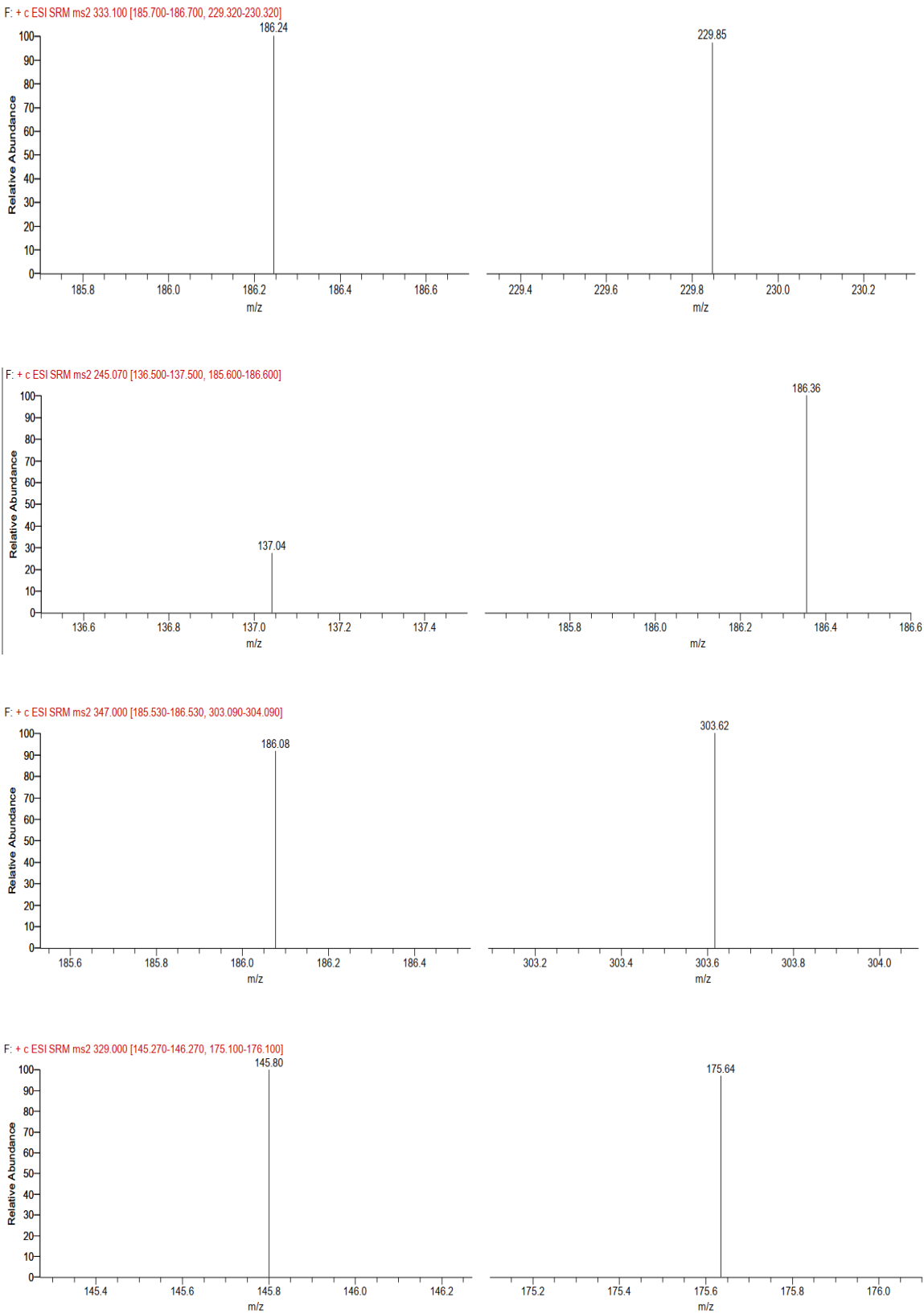


F: + c ESI SRM ms2 329.000 [145.270-146.270, 175.100-176.100]



The following is the mass spectrum of two fractions (J₁ and J₂) which isolated from MAAs extracts from *Gracilaria* sp.

J₁



J₂

F: + c ESI SRM ms2 245.070 [136.500-137.500, 185.600-186.600]

