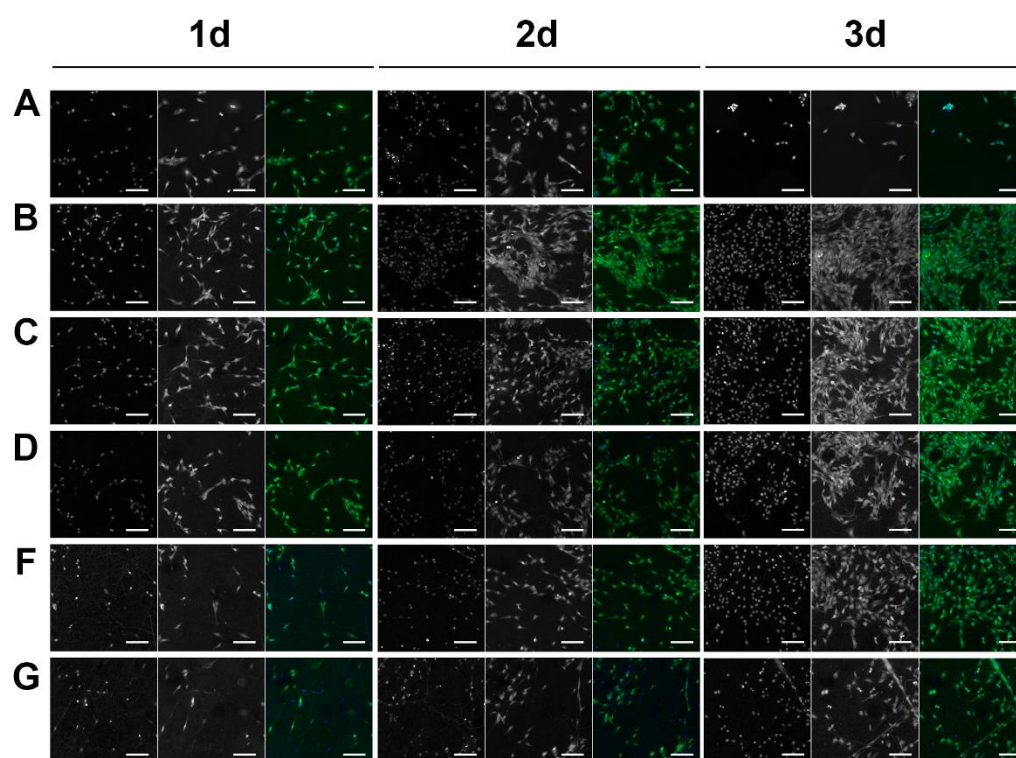


## Supplementary Materials



**Figure S1.** HCA scan of Col-TPU composite nanofiber membranes, scale bar is 150  $\mu\text{m}$ .

**Table S1.** Comparison of Col-TPU composite nanofiber membranes different spectral peak positions in FTIR spectra.

Absorption peaks ( $\text{cm}^{-1}$ )	Col100	Col195	Col190	Col180	Col160	TPU
Around 3315 (Amide A)	3311	3307	3307	3307	3309	-
N-H (TPU)	-	3306 $\uparrow$	3307 $\uparrow$	3307 $\uparrow$	3308 $\uparrow$	3330
2920-2944 (Amide B)	2932	2932 $\uparrow$	2933 $\uparrow$	2936 $\uparrow$	2939 $\uparrow$	-
C-H (TPU)	-	-	-	-	-	2942
1625-1690 (Amide I)	1655	1655	1654	1654	1654	-
C=C (TPU)	-	1538 $\downarrow$	1537 $\downarrow$	1535 $\downarrow$	1534 $\downarrow$	1532
1500-1600 (Amide II)	1538	1538	1537	1535	1534	-
$\text{CH}_2$ (TPU)	-	1452 $\downarrow$	1451 $\downarrow$	1450 $\downarrow$	1449 $\downarrow$	1447
1200-1300 (Amide III)	1223	1226	1231	1228	1227	-
-NHCOO-	-	-	-	-	-	1240
C-O-C (TPU)	-	1000 $\uparrow$	1101 $\uparrow$	1107 $\uparrow$	1108 $\uparrow$	1100

**Table S2.** The thermogravimetric analysis of Col-TPU composite nanofiber membranes.

Samples	T <sub>5%</sub> , °C	T <sub>p</sub> , °C	T <sub>p</sub> weight loss, %	T <sub>50%</sub> , °C	Decomposition of TPU, °C	Residue at 600 °C
Col100	65.0	314.0	54.81	327.0	-	14.39
Col95	57.7	319.0	56.29	331.0	400.3	15.34
Col90	64.3	320.5	62.26	343.6	413.8	16.32
Col80	68.3	320.7	62.70	350.3	419.7	18.57
Col60	75.7	321.8	65.68	357.0	421.5	19.67

**Table S3.** CCK-8 assay OD<sub>450</sub> of Col-TPU composite nanofiber membranes. The sequence of letters a-d represents the size of the mean value (a>b>c>d). The same letter indicates no statistically significant difference (P<0.05, n=4).

Samples	1d	2d	3d
Control	0.18 <sup>abc</sup>	0.36 <sup>b</sup>	0.56 <sup>c</sup>
Col100	0.19 <sup>a</sup>	0.78 <sup>a</sup>	1.76 <sup>a</sup>
Col95	0.18 <sup>ab</sup>	0.40 <sup>b</sup>	1.11 <sup>b</sup>
Col90	0.17 <sup>abc</sup>	0.35 <sup>b</sup>	1.00 <sup>b</sup>
Col80	0.15 <sup>cd</sup>	0.34 <sup>b</sup>	0.97 <sup>b</sup>
Col60	0.17 <sup>d</sup>	0.32 <sup>b</sup>	0.93 <sup>b</sup>

**Table S4.** Cell proliferation and cytotoxicity evaluation of Col-TPU composite nanofiber membranes respect to control,% and grade.

Samples	1d		2d		3d	
	%	grade	%	grade	%	grade
Col100	107.04	0	215.53	0	312.55	0
Col95	102.25	0	110.40	0	195.93	0
Col90	97.04	0	97.43	0	177.86	0
Col80	81.97	I	94.24	0	171.66	0
Col60	76.80	I	88.21	0	164.92	0