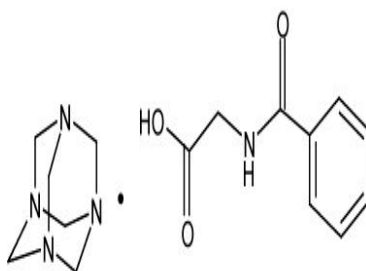
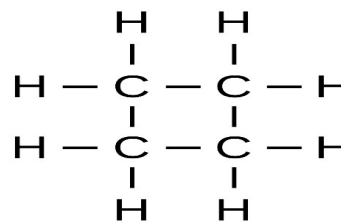


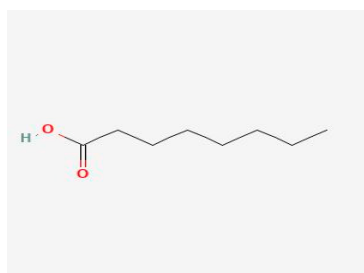
Butanoic



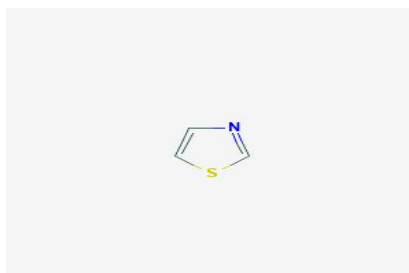
Methenamine



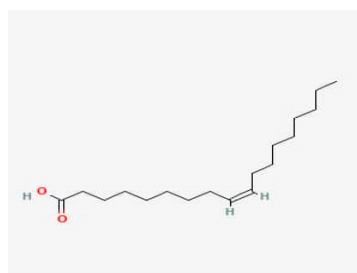
Cyclobutane



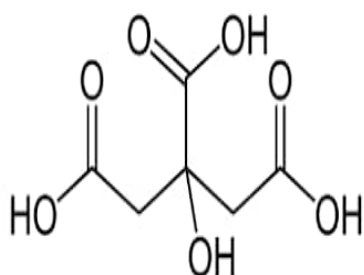
Octanoic Acid



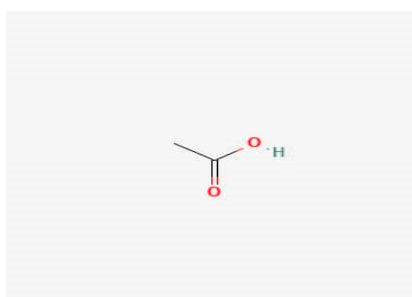
Thiazole



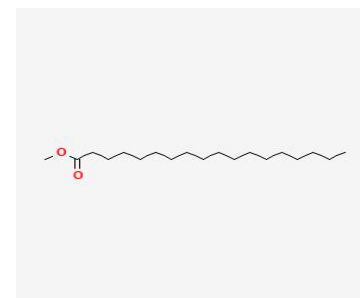
Oleic Acid



Citric Acid



Acetic Acid



Hexadecanoic acid



Methyl stearate

Supplementary Figure S1. Chemical structures of the Organic constituents of methanolic *P. Amarus* leaf extract

Supplementary Table S1. Intestinal histomorphometric analysis using Chiu's grading

Grade	Features
0	Normal mucosal villi.
1	Development of subepithelial Gruenhagen's space, usually at the apex of the villus; often with capillary congestion.
2	Extension of the subepithelial space with moderate lifting of epithelial layer from the lamina propria.
3	Massive epithelial lifting down the sides of villi. A few tips may be denuded.
4	Denuded villi with lamina propria and dilated capillaries exposed. Increased cellularity of lamina propria may be noted.
5	Digestion and disintegration of lamina propria; hemorrhage and ulceration.

Supplementary Table S2. Hepatic histomorphometric analysis using Eckhoff's grading

Grade	Features
0	Minimal or no evidence of injury
1	Mild injury consisting of cytoplasmic vacuolation and focal nuclear pyknosis
2	Moderate to severe injury with extensive nuclear pyknosis, cytoplasmic hypereosinophilia, loss of intercellular borders, and mild to moderate neutrophil infiltration
3	Severe injury with disintegration of hepatic cords, hemorrhage, and severe PMN infiltration