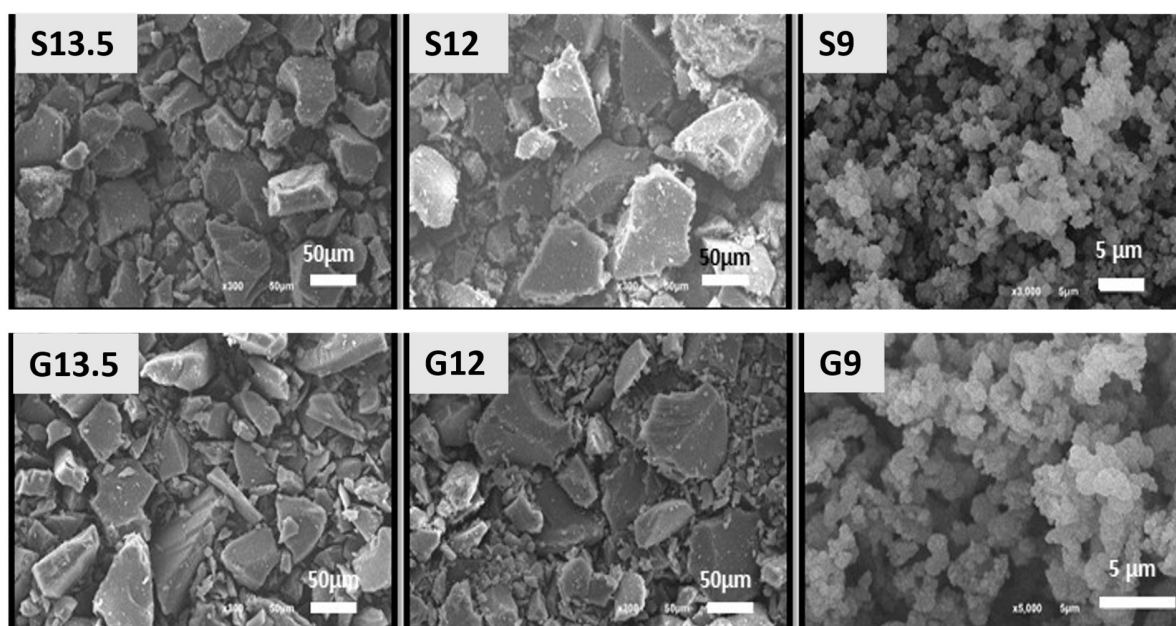
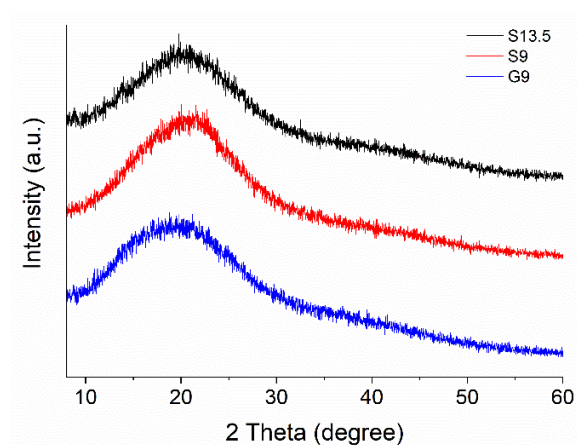


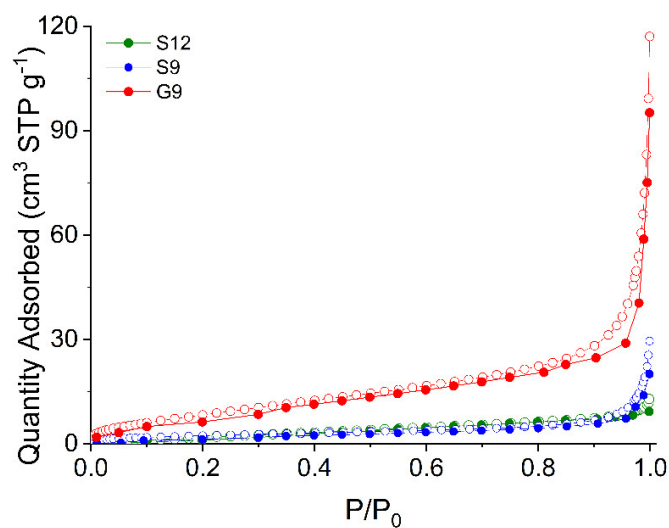
**Figure S1.** Effect of activation process on apparent density of obtained acid char and AC samples.



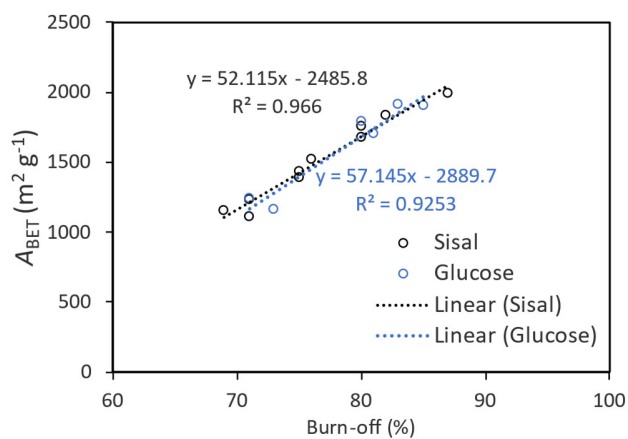
**Figure S2.** SEM images of acid-char samples obtained by sisal and glucose precursors.



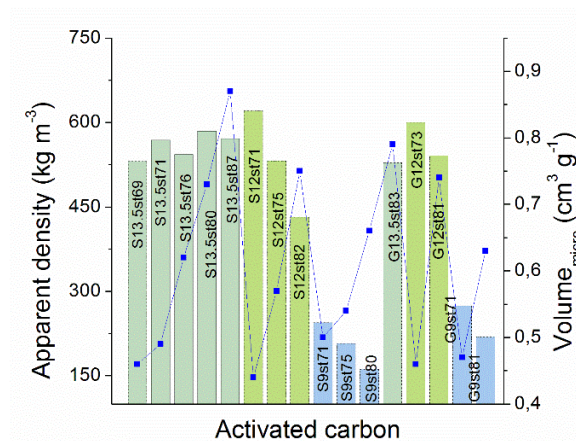
**Figure S3.** Powder XRD of selected acid-char materials.



**Figure S4.**  $N_2$  adsorption-desorption isotherms of sisal- and glucose-based acid-chars.



**Figure S5.** Linear relation between BET area values and burn-off degree during the acid-char steam activation.



**Figure S6.** Relation between apparent density and micropore volume of the activated carbons.