

Vitamin B complex and experimental autoimmune encephalomyelitis – Attenuation of the clinical signs and gut microbiota dysbiosis

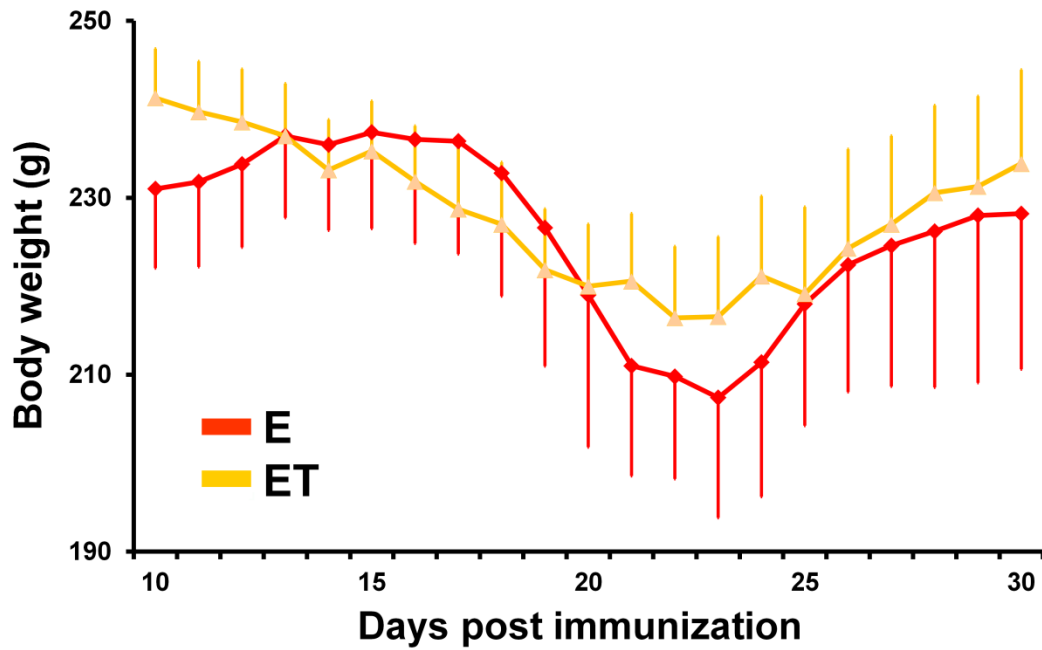


Figure S1. Body weight of untreated (E) and VBC-treated (ET) EAE rats during the disease course. Results are presented as mean \pm SE.

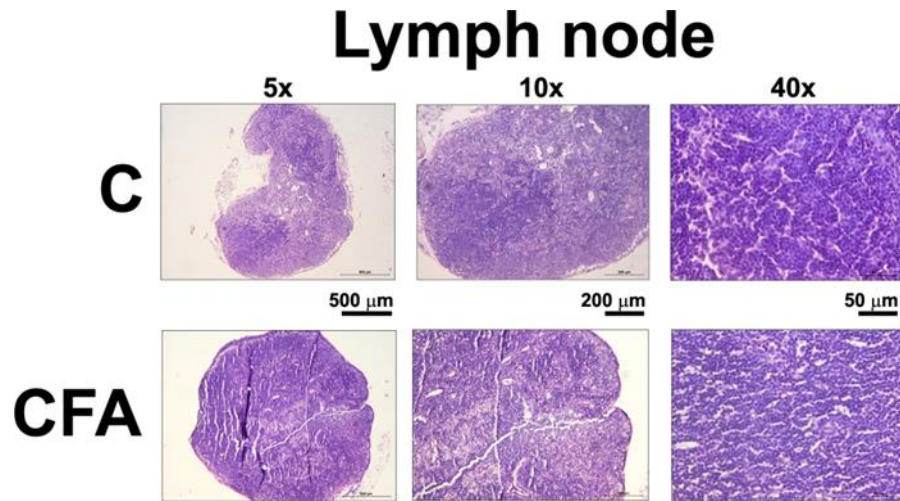


Figure S2. Histological examinations of the popliteal lymph node sections of C and CFA control groups. Micrographs of transverse sections of H&E stained lymph nodes. Magnification 5x (scale bar 500 μ m), 10x (scale bar 200 μ m), and 40x (scale bar 50 μ m).

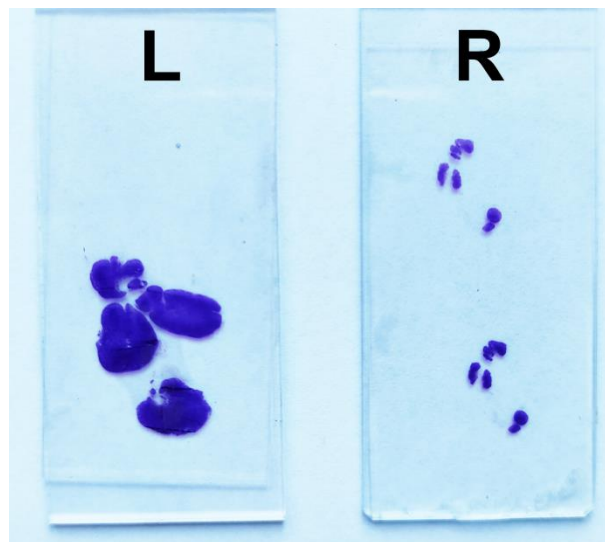


Figure S3. Difference between the size/extent of left (L) popliteal lymph node in comparison with right (R) after EAE induction.

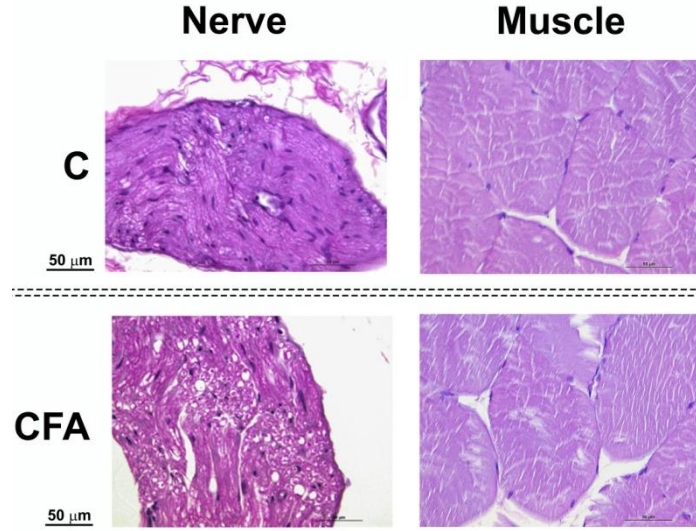


Figure S4. Histological examinations of nerve and muscle nuclear density of C and CFA control groups. Magnification 40x (scale bar 50 μm).

Table S1. Beta diversity calculated as weighted Unifrac distance between the samples.

	C	CFA	Eo	Ep	Ee	ETo	ETp	ETe
C	0	0.173535	0.284747	0.284667	0.19407	0.326013	0.246003	0.159983
CFA	0.173535	0	0.186428	0.1637	0.164375	0.225354	0.163207	0.10299
Eo	0.284747	0.186428	0	0.14472	0.18184	0.202293	0.160026	0.187298
Ep	0.284667	0.1637	0.14472	0	0.211488	0.167999	0.150631	0.187482
Ee	0.19407	0.164375	0.18184	0.211488	0	0.209439	0.189718	0.115997
ETo	0.326013	0.225354	0.202293	0.167999	0.209439	0	0.199031	0.210075
ETp	0.246003	0.163207	0.160026	0.150631	0.189718	0.199031	0	0.135509
ETe	0.159983	0.10299	0.187298	0.187482	0.115997	0.210075	0.135509	0

Table S2. Relative abundance of genera within Prevotellaceae family in different samples. Letters a-k indicate pairs of samples that were detected as differentially abundant according to the differentially abundant test based on metastat method as implemented in microeco package.

Genus/Groups	C	Eo	Ep	Ee	Eaverage	ETo	ETp	ETe	ETaverage
Prevotellaceae NK3B31 group	0.2125 ^{a,b,c,d,e}	0.0081 ^a	0.0088 ^b	0.1476	0.1476	0.0084 ^c	0.0096 ^d	0.0843 ^e	0.0341
Prevotella_9	0.1415 ^{f,g,h}	0.0855	0.0305 ^f	0.055 ^g	0.0570	0.0400 ^h	0.0688	0.0960	0.0683
Prevotellaceae UCG-001	0.0682	0.0226	0.0184	0.0527	0.0312	0.0240	0.0313	0.0500	0.0351
Prevotellaceae UCG-003	0.0456 ⁱ	0.0305	0.0261 ⁱ	0.0261	0.0276	0.0261	0.1429 ^{e,h}	0.0514	0.0735
Alloprevotella	0.0335 ⁱ	0.0654 ^{j,k}	0.0292	0.0232	0.0393	0.0125	0.0464	0.0449 ^k	0.0346
Prevotella	0.0199	0.0085	0.0034	0.0075	0.0065	0.0074	0.0116	0.0109	0.0100
f_Prevotellaceae_g_NA	0.0108	0.0055	0.0081	0.0078	0.0071	0.0070	0.0098	0.0100	0.0089
Prevotellaceae Ga6A1 group	0.0017	0.0025	0.0062	0.0053	0.0047	0.0023	0.0052	0.0015	0.0030