

Supplemental Material

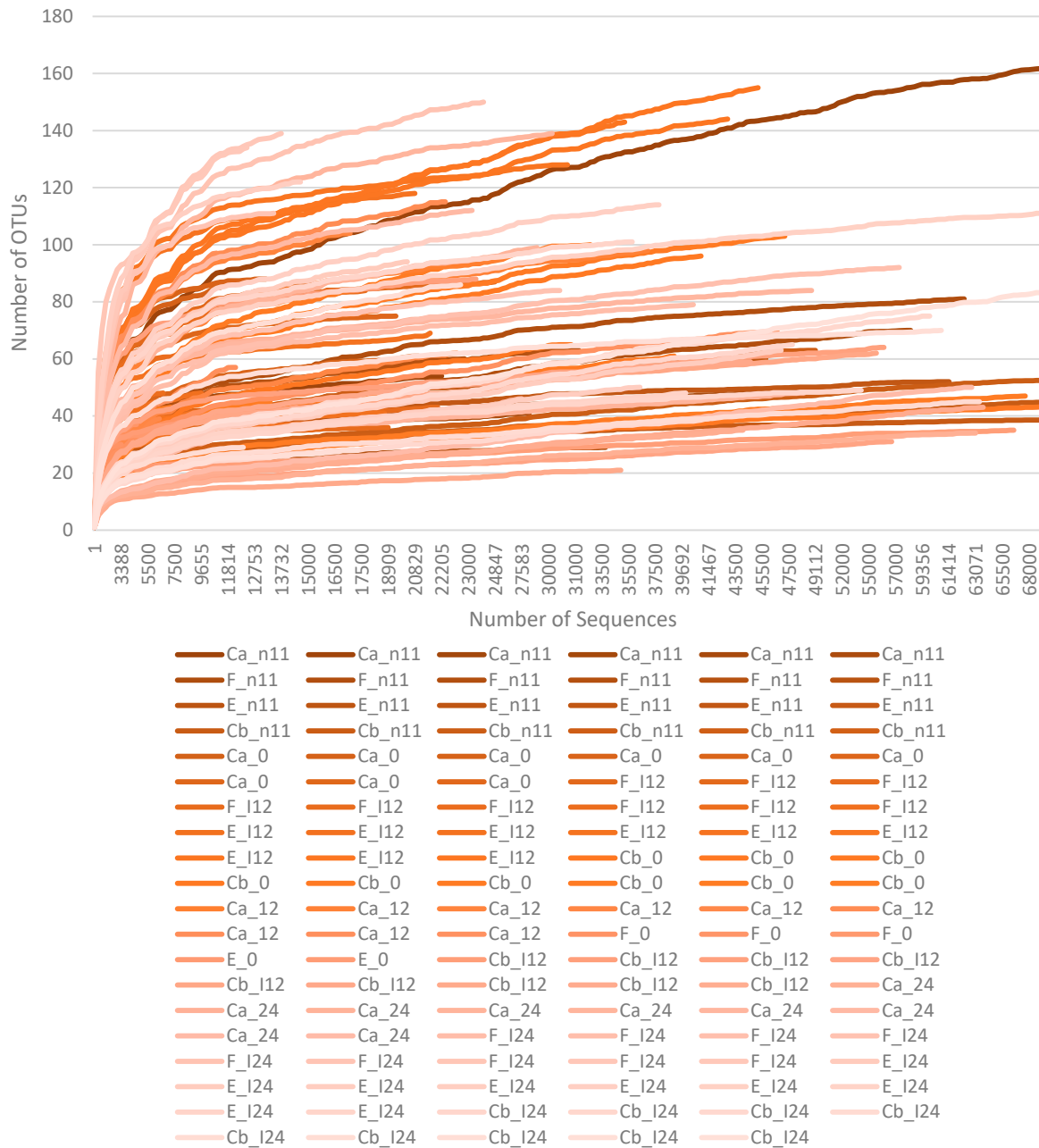
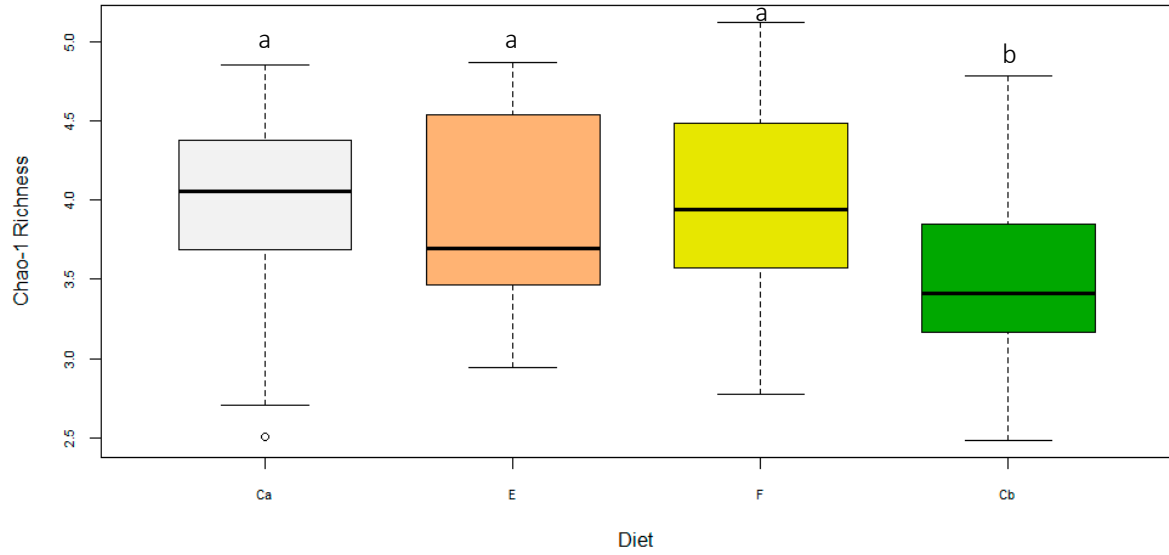


Figure S1. Rarefaction curve of each 16S sample from the intestinal content of rainbow trout.

(a)



(b)

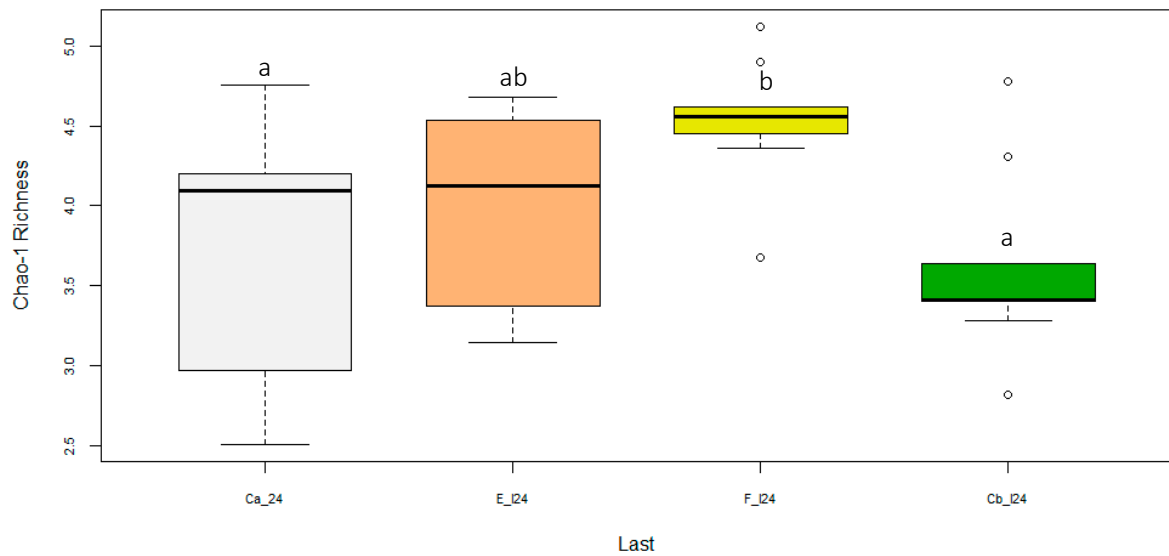


Figure S2. Alpha diversities of OTUs (mean \pm SEM) in the intestine of rainbow trout for each diet (n = 9) based Chao-1 Richness at (a) pooled over four time points, and (b) D24 p.i. (last time point). Treatments included control+uninfected (Ca), erythromycin+infected (E), florfenicol+infected (F) and control+infected (Cb). Differing letters indicate significant difference (p < 0.05).