

# Phytochemical profiling of Greek clover herb extract and its potential antibacterial effect using *in vitro* and *in vivo* investigations

Jawaher Alqahtani <sup>1†\*</sup>, Walaa A. Negm <sup>2†</sup>, Engy Elekhrawy <sup>3</sup>, Ismail A. Hussein <sup>4</sup>, Ehssan Moglad <sup>5</sup>, Sarah Ibrahim <sup>6</sup>, Suzy A. El-Sherbeni <sup>2\*</sup>

Figure S1. Negative mode total ion chromatogram of LC-ESI-MS/MS of *Trigonella foenum-graecum* herb extract.

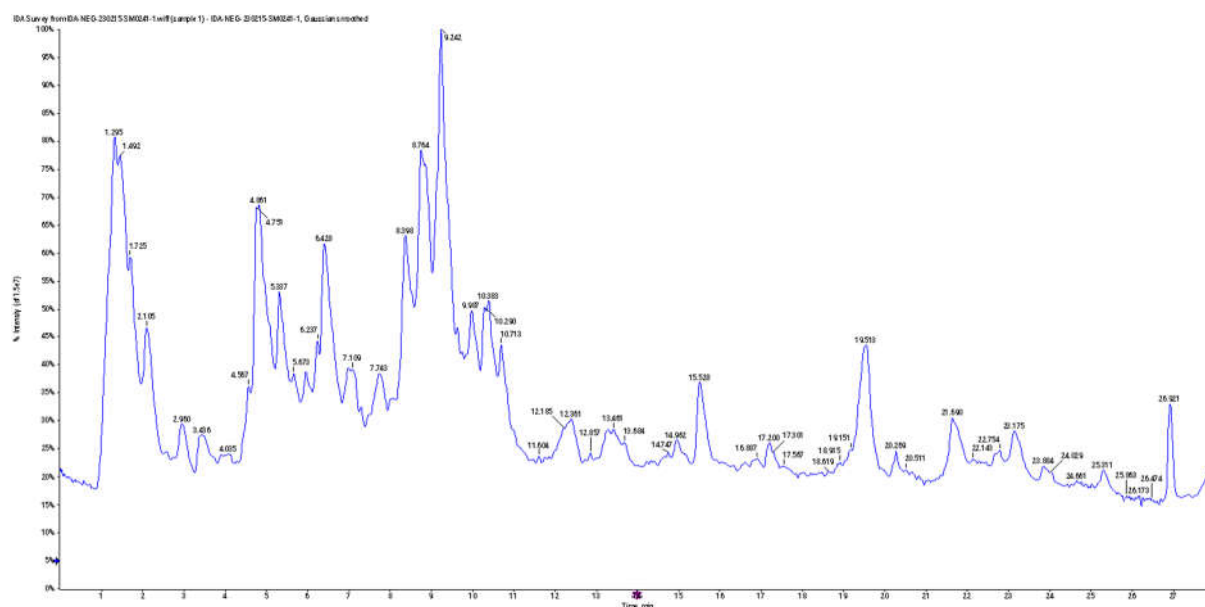


Table S1. Sequences of the primers

Gene	Forward primer	Reverse primer
iNOS	GCTATGGCCGCTTTGATGTG	ACCTCCAGTAGCATGTTGGC
GPX-1	AATGTCGCGTCTCTCTGAGG	TTGCCATTCTGGTGTCCGAA
B actin	GATCAGCAAGCAGGAGTACGA	AAAACGCAGCTCAGTAACAGT

